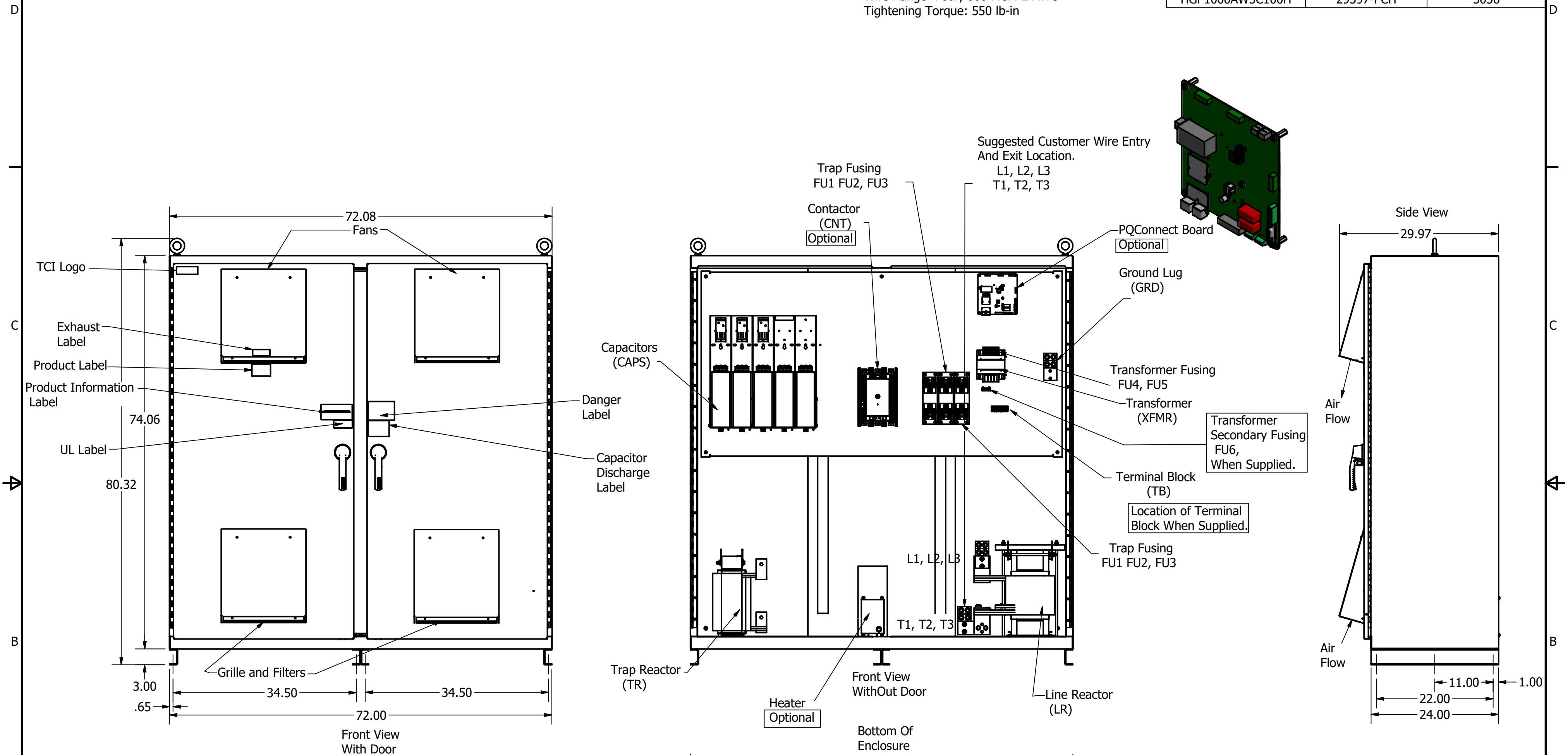


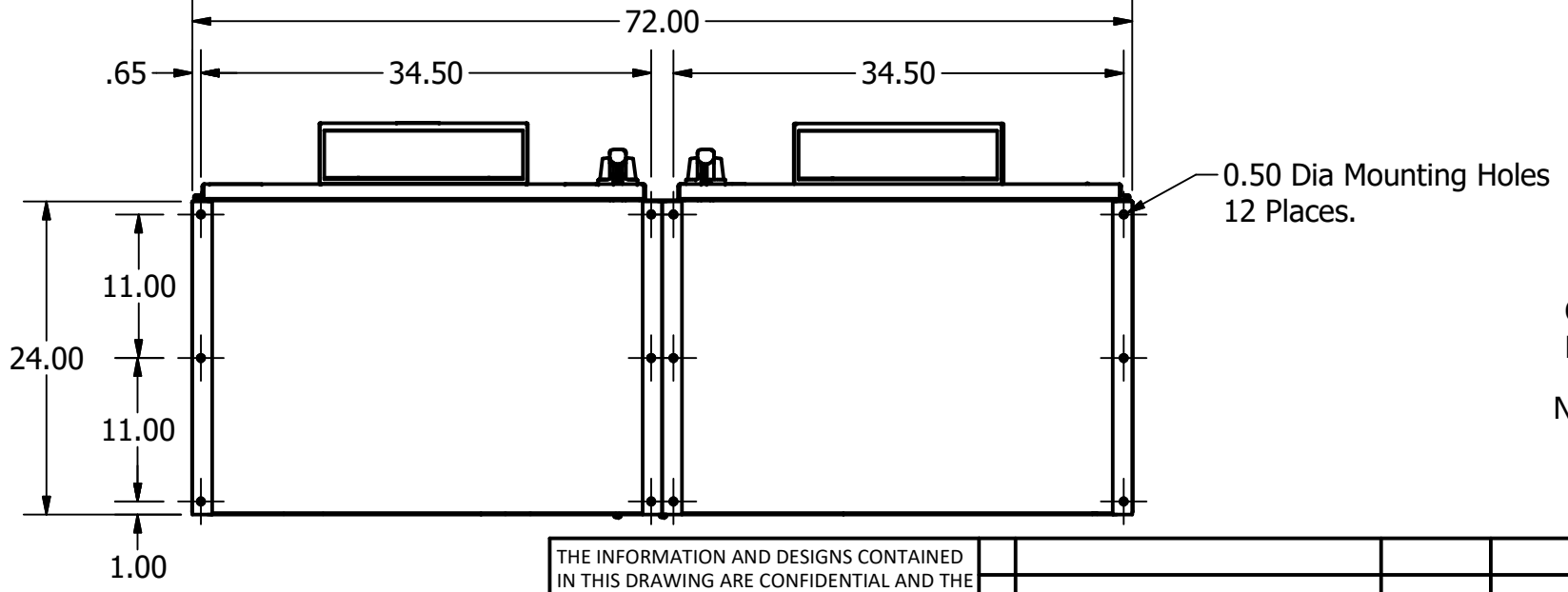
HGP Part Number	HorsePower (HP)	kVar	Max Amps (A)	Harmonic	Voltage (V)	Hz.	Phase
HGP1000AW3---	1000	300	1200	5th	480	60	3

HGP Part Number	Schematic Drawing #	Approx Weight (LBS)
HGP1000AW3S0000	28697-5S	3032
HGP1000AW3C0000	28697-5	3048
HGP1000AW3C000H	29597-H	3055
HGP1000AW3S1000	29597-PQ1	3035
HGP1000AW3C1000	29597-PQ	3051
HGP1000AW3C100H	29597-PCH	3056

Customer Connections:
L1, L2, L3, T1, T2, T3, and
Ground Lug.
Wire Range- Four, 600 MCM-2 AWG
Tightening Torque: 550 lb-in



HGP1000AW3-----						
Components	S0000	C0000	C000H	S1000	C1000	C100H
Line Reactor (LR)	x	x	x	X	X	X
Trap Reactor (TR)	x	x	x	X	X	X
Capacitor (Cap)	x	x	x	X	X	X
Trap Fusing, FU1, FU2, FU3	x	x	x	X	X	X
Contactor (CNT)		x	x		X	X
Transformer (XFMR)	x	x	x	X	X	X
XFMR Fusing, FU4, FU5	x	x	x	X	X	X
Heater			x			X
PQConnect Board				X	X	X



Customer Is Responsible For Installation to
Meet All National And Local Electrical Codes.
NOTE: USE ONLY HUBS OR FITTINGS THAT COMPLY
WITH UL514B FOR TYPE 3R ENCLOSURES

Material(s) Shall be RoHS Compliant

THE INFORMATION AND DESIGNS CONTAINED IN THIS DRAWING ARE CONFIDENTIAL AND THE PROPRIETARY PROPERTY OF ALLIED MOTION TECHNOLOGIES INC. AND ITS SUBSIDIARIES. NEITHER THIS DESIGN NOR ANY INFORMATION CONTAINED IN THIS DRAWING MAY BE REPRODUCED OR DISCLOSED TO OTHERS WITHOUT THE EXPRESS WRITTEN CONSENT OF ALLIED MOTION TECHNOLOGIES INC. AND ITS SUBSIDIARIES.				TOLERANCES (EXCEPT AS NOTED)	W132N10611 Grant Drive Germantown, WI 53022 © 2021 TCI, LLC An Allied Motion Company HarmonicGuard Passive, HGP0900AW3----- HGP, 1000HP, 480/3/60, Type 3R
				DECIMAL	
				.XX ± .25 .XXX ± .10	
				FRACTIONAL ± 1/16	
	B	5697 Add PQ, One Trap Branch	08/24/21	JRN	ANGULAR ± 1°
	A	As Designed	09/28/17	JRN	SCALE: 1/14
	NO	REVISION	DATE	BY	DATE: 09/28/17 APRVD: 106072DG SIZE: C