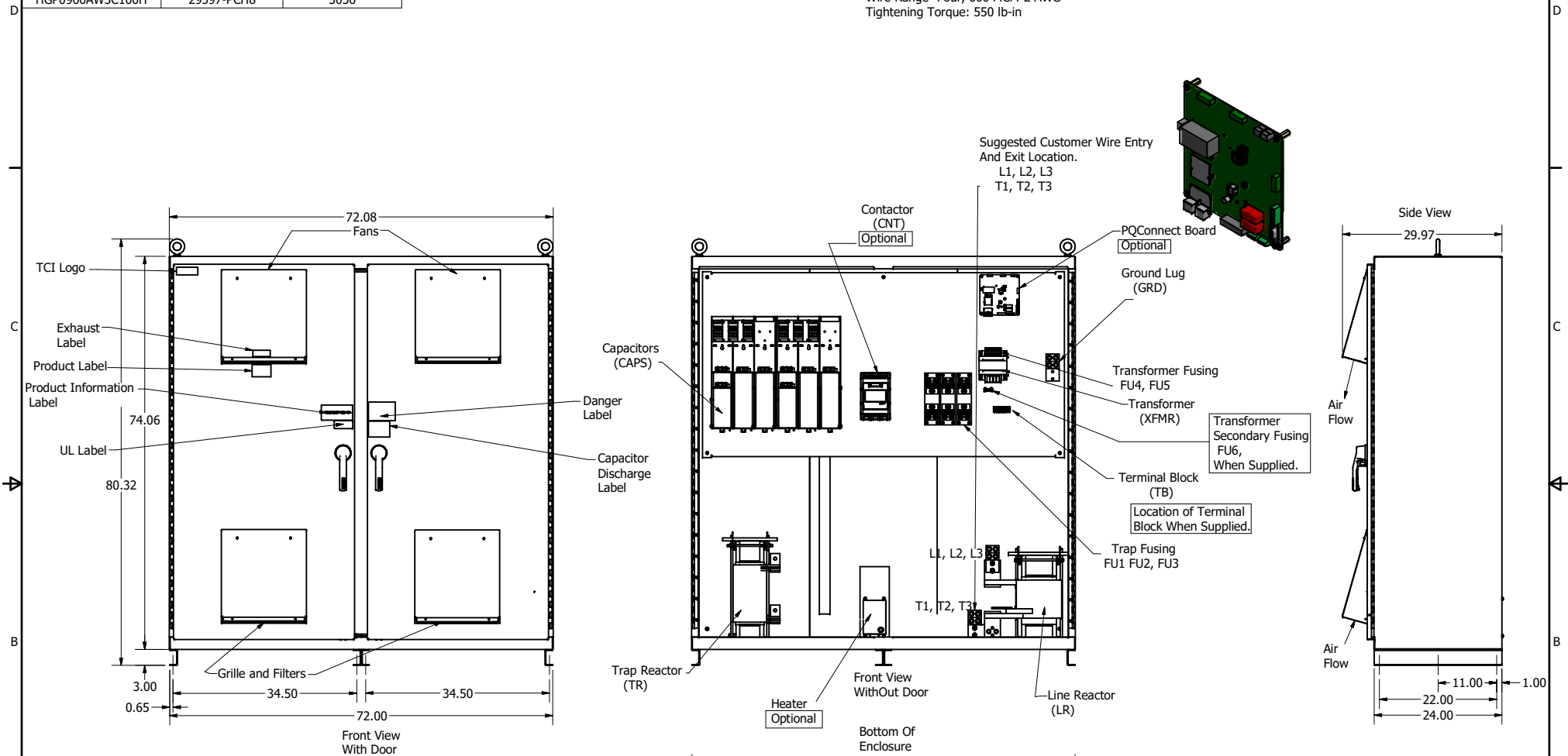


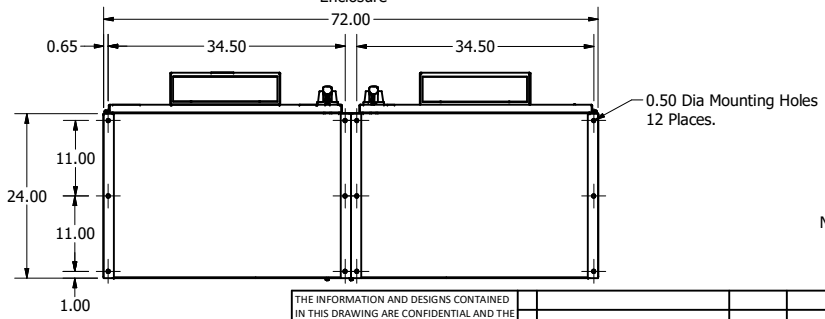
HGP Part Number	Schematic Drawing #	Approx Weight (LBS)
HGP0900AW3S0000	28697-5S	3032
HGP0900AW3C0000	28697-5	3048
HGP0900AW3C000H	29597-H	3055
HGP0900AW3S1000	29597-PQ9	3035
HGP0900AW3C1000	29597-PQ8	3051
HGP0900AW3C100H	29597-PCH8	3056

HGP Part Number	HorsePower (HP)	kVar	Max Amps (A)	Harmonic	Voltage (V)	Hz.	Phase
HGP0900AW3----	900	270	1080	5th	480	60	3

Customer Connections:
L1, L2, L3, T1, T2, T3, and
Ground Lug.
Wire Range- Four, 600 MCM-2 AWG
Tightening Torque: 550 lb-in



Components	HGP0900AW3----					
	S0000	C0000	C000H	S1000	C1000	C100H
Line Reactor (LR)	x	x	x	x	x	x
Trap Reactor (TR)	x	x	x	x	x	x
Capacitor (Cap)	x	x	x	x	x	x
Trap Fusing, FU1, FU2, FU3	x	x	x	x	x	x
Contactor (CNT)		x	x		x	x
Transformer (XFMR)	x	x	x	x	x	x
XFMR Fusing, FU4, FU5	x	x	x	x	x	x
Heater			x			x
PQConnect Board				x	x	x



Customer Is Responsible For Installation to
Meet All National And Local Electrical Codes.
NOTE: USE ONLY HUBS OR FITTINGS THAT COMPLY
WITH UL514B FOR TYPE 3R ENCLOSURES

Material(s) Shall be RoHS Compliant

THE INFORMATION AND DESIGNS CONTAINED
IN THIS DRAWING ARE CONFIDENTIAL AND THE
PROPRIETARY PROPERTY OF ALLIED MOTION
TECHNOLOGIES INC. AND ITS SUBSIDIARIES.
NEITHER THIS DESIGN NOR ANY INFORMATION
CONTAINED IN THIS DRAWING MAY BE
REPRODUCED OR DISCLOSED TO OTHERS
WITHOUT THE EXPRESS WRITTEN CONSENT OF
ALLIED MOTION TECHNOLOGIES INC. AND ITS
SUBSIDIARIES.

NO	REVISION	DATE	BY	SCALE
L	Capacitor Bracket Update	12/13/21	JRN	
K	5628, CNT-Fuse updated	12/6/2021	DSW	
J	5791 Enclosure Updated	12/02/21	JRN	
I	5787 Updated Schematics	11/30/21	JRN	
NO				

TOLERANCES
(EXCEPT AS NOTED)

DECIMAL	.XX ± .25
	.XXX ± .10
FRACTIONAL	± 1/16
ANGULAR	± 1°

TCL W132N10611 (Rev 11/16)
Germania, WI 53022 © 2021 TCL, LLC
An **Official Motion Control Company**
HarmonicGuard Passive, HGP0900AW3----
HGP, 900HP, 480/3/60, Type 3R
OWN BY: DSW DATE: 5/6/14 FILE: 105574DG
SCALE: 1/14 DRAWN: JRN