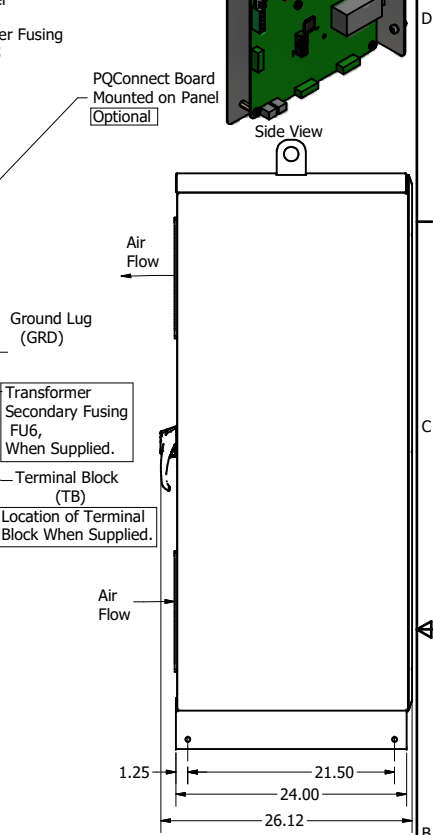
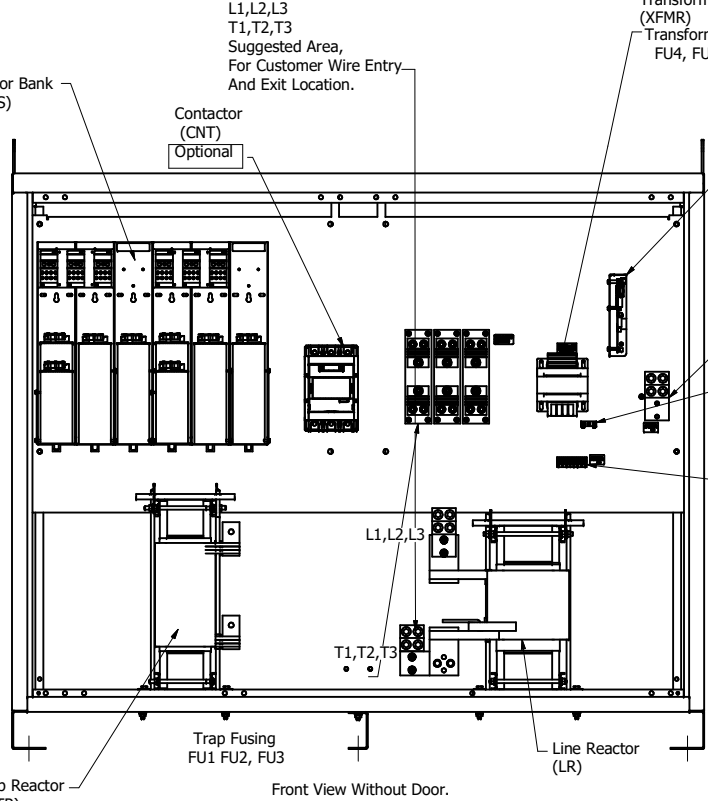
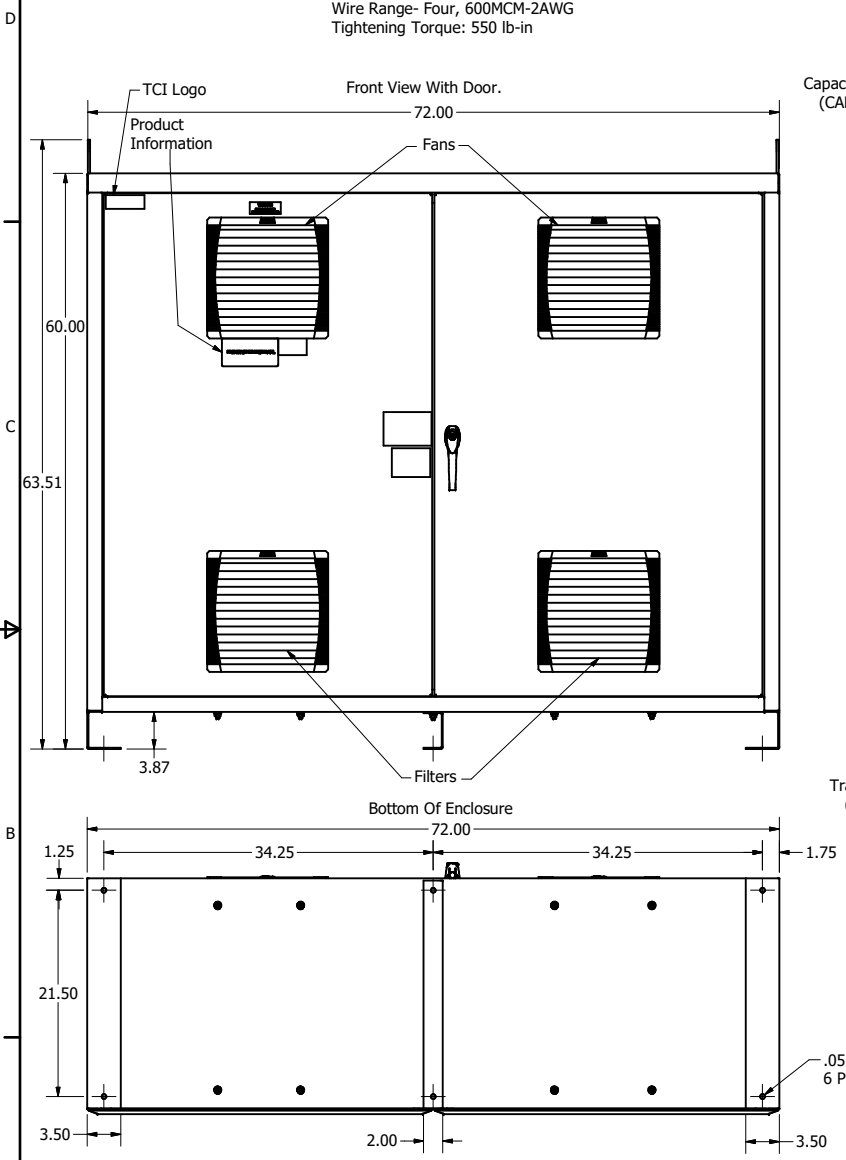
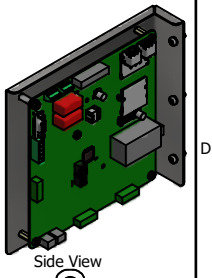


HGP Part Number	HorsePower (HP)	kVar	Max Amps (A)	Harmonic	Voltage (V)	Hz.	Phase
HGP0900AW1---	900	270	1080	5th	480	60	3

HGP Enclosed Type 1 Part Number	Schematic Drawing #	Approx Weight (LBS)
HGP0900AW1S0000	28697-5S	2000
HGP0900AW1C0000	28697-5	2020
HGP0900AW1S1000	29597-PQ1	2005
HGP0900AW1C1000	29597-PQ	2025

Customer Connections:  
L1, L2, L3, T1, T2, T3, and  
Ground Lug.  
Wire Range- Four, 600MCM-2AWG  
Tightening Torque: 550 lb-in



HGP0900AW----				
Components	1S0000	1C0000	1S1000	1C1000
Line Reactor (LR)	X	X	X	X
Trap Reactor (TR)	X	X	X	X
Capacitor (Cap)	X	X	X	X
Trap Fusing, FU1, FU2, FU3	X	X	X	X
Contactor (CNT)		X		X
Transformer (XFMR)	X	X	X	X
XFMR Fusing, FU4, FU5	X	X	X	X
PQConnect Board			X	X

THE INFORMATION AND DESIGNS CONTAINED IN THIS DRAWING ARE CONFIDENTIAL AND THE PROPRIETARY PROPERTY OF ALLIED MOTION TECHNOLOGIES INC. AND ITS SUBSIDIARIES. NEITHER THIS DESIGN NOR ANY INFORMATION CONTAINED IN THIS DRAWING MAY BE REPRODUCED OR DISCLOSED TO OTHERS WITHOUT THE EXPRESS WRITTEN CONSENT OF ALLIED MOTION TECHNOLOGIES INC. AND ITS SUBSIDIARIES.

NO	REVISION	DATE	BY
E	5840 To Two Capacitor Banks	01/26/22	JRN
D	5628, GE 29315 to ABB 32279	6/15/2021	DSW
C	5169, Trap Circuit from 2 to 1	4/29/2020	DSW
B	Add PQ Connect	6/25/18	DSW

TOLERANCES (EXCEPT AS NOTED)	
DECIMAL	.XX ± .25 .XXX ± .10
FRACTIONAL	± 1/16
ANGULAR	± 1°

Material(s) Shall be RoHS Compliant

W182N10611 (Rev 13) © 2021 TCI, LLC  
An Official Motion Group Company  
HarmonicGuard Passive, HGP0900AW1----  
HGP, 900HP, 480/3/60, Type 1  
105500DG  
SCALE: 1/10 DATE: 4/09/14

Customer Is Responsible For Installation to Meet All National And Local Electrical Codes.