

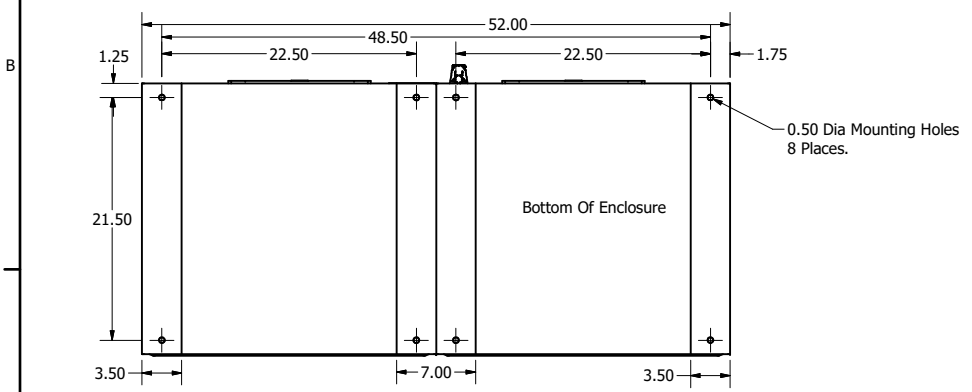
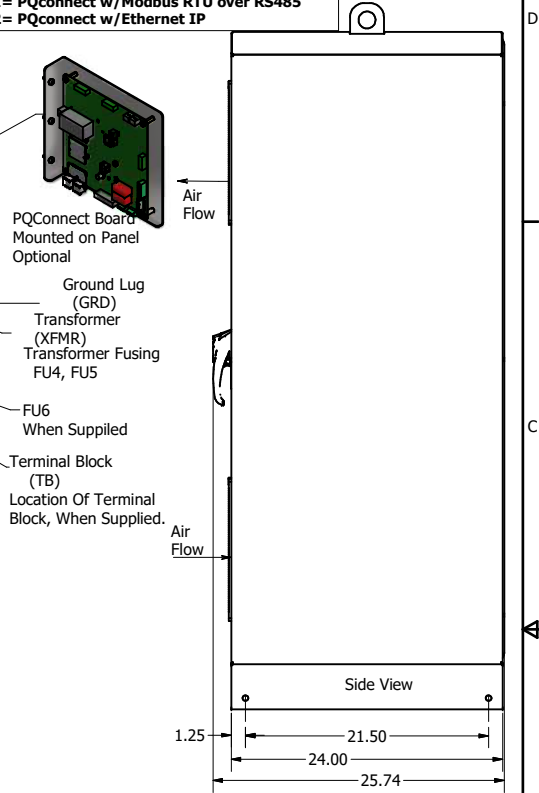
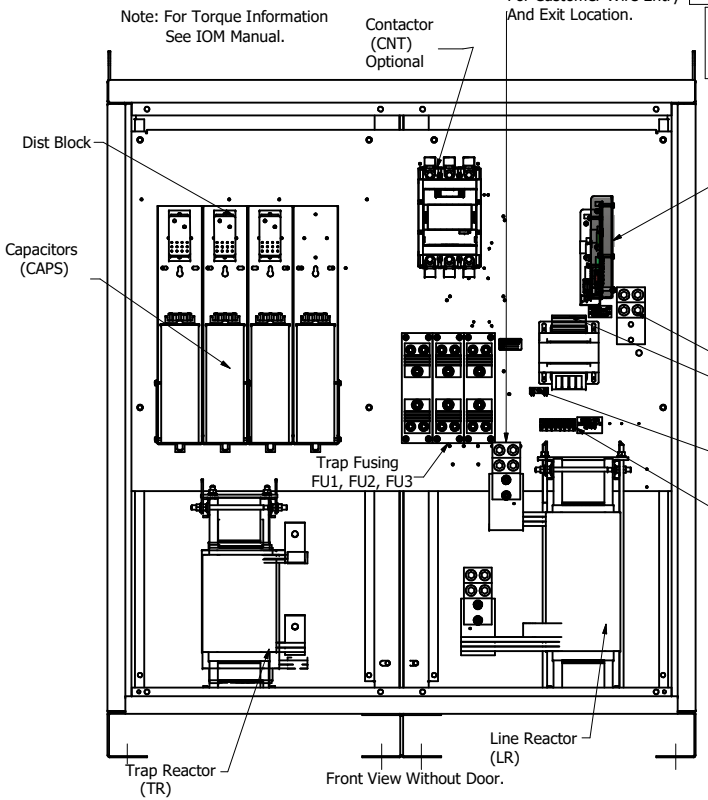
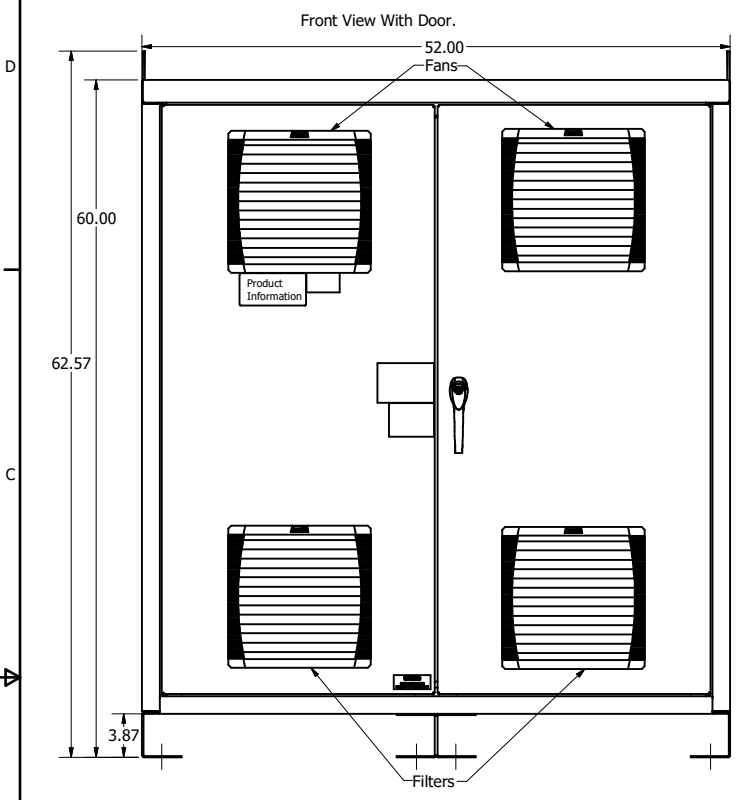
HGP Part Number	HorsePower (HP)	kVar	Max Amps (A)	Harmonic	Voltage (V)	Hz.	Phase
HGP0800AW1---	800	240	960	5th	480	60	3

Customer Connections:  
L1, L2, L3, T1, T2, T3, and Ground Lug.  
Wire Range- (4), 600 kcmil-2 AWG

L1,L2,L3  
T1,T2,T3  
Suggested Area,  
For Customer Wire Entry  
And Exit Location.

HGP Enclosed Type 1 Part Number	Schematic Drawing #	Approx Weight (LBS)
HGP0800AW1S0000	28697-5S	1650
HGP0800AW1C0000	28697-5	1670
HGP0800AW1C*000	29597-PQ	1675

\*=Communication Option  
0= No Connectivity  
1= PQconnect w/Modbus RTU over RS485  
2= PQconnect w/Ethernet IP



HGP0800AW-----			
Components	1S0000	1C0000	1C1000/1C2000
Line Reactor (LR)	X	X	X
Trap Reactor (TR)	X	X	X
Capacitor (Cap)	X	X	X
Trap Fusing, FU1, FU2, FU3	X	X	X
Contactor (CNT)		X	X
Transformer (XFMR)	X	X	X
XFMR Fusing, FU4, FU5	X	X	X
PQConnect Board			X

Customer Is Responsible For Installation to Meet All National And Local Electrical Codes.

Material(s) Shall be RoHS Compliant

REV	DESCRIPTION	DATE	BY	SCALE	DRW BY	DATE	SCALE	DRW BY	DATE	SCALE
G	TO KTR240A65HG3	9/18/2023	DSW							
F	6024, PQ Options Added	8/1/2023	DSW							
E	5628, GE 29315 to ABB 32279	6/14/2021	DSW							
D	5061, Inductors Updated	2/3/2020	DSW							
NO	REVISION	DATE	BY							

TOLERANCES (EXCEPT AS NOTED)	
DECIMAL	.XX ± .25 .XXX ± .10
FRACTIONAL	± 1/32
ANGULAR	± 1°

W132N10611 (Rev 13) 5/16/20	© 2023 TCI, LLC
An Official Motion Systems Company	
Harmonic Guard Passive	
HGP, 800HP, 480/3/60, Type 1	
105499DG	
SCALE: 1/8	DATE: 4/7/14
DRW BY: DSW	DATE: 4/7/14
SCALE: 1/8	DATE: 4/7/14