

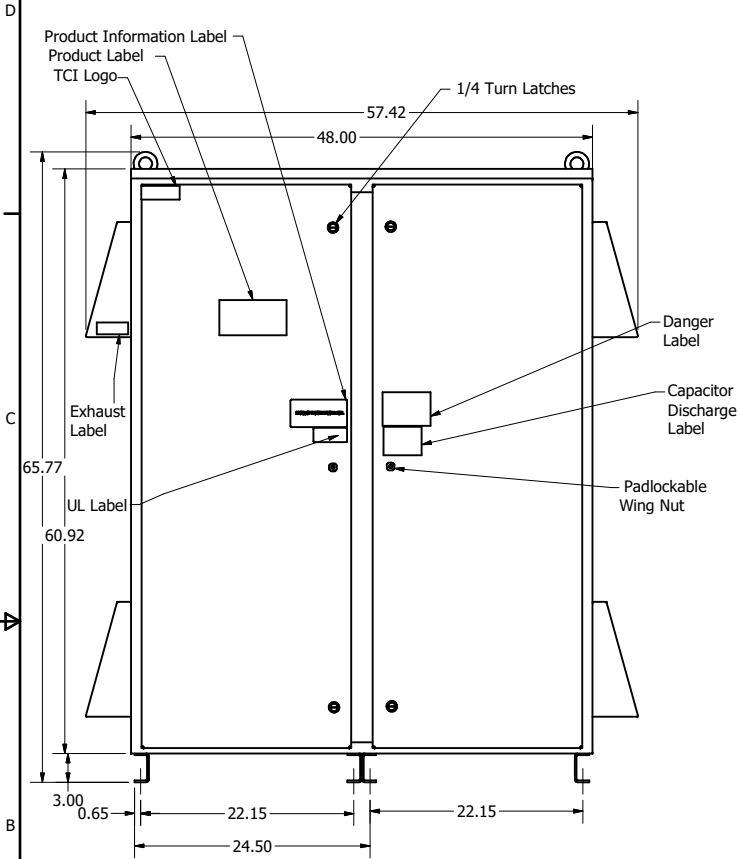
HGP Part Number	HorsePower (HP)	kVar	Maximum Amps (A)	Harmonic	Voltage (V)	Hz.	Phase
HGP0700AW3----	700	210	840	5th	480	60	3

Note: For Torque Information See IOM Manual

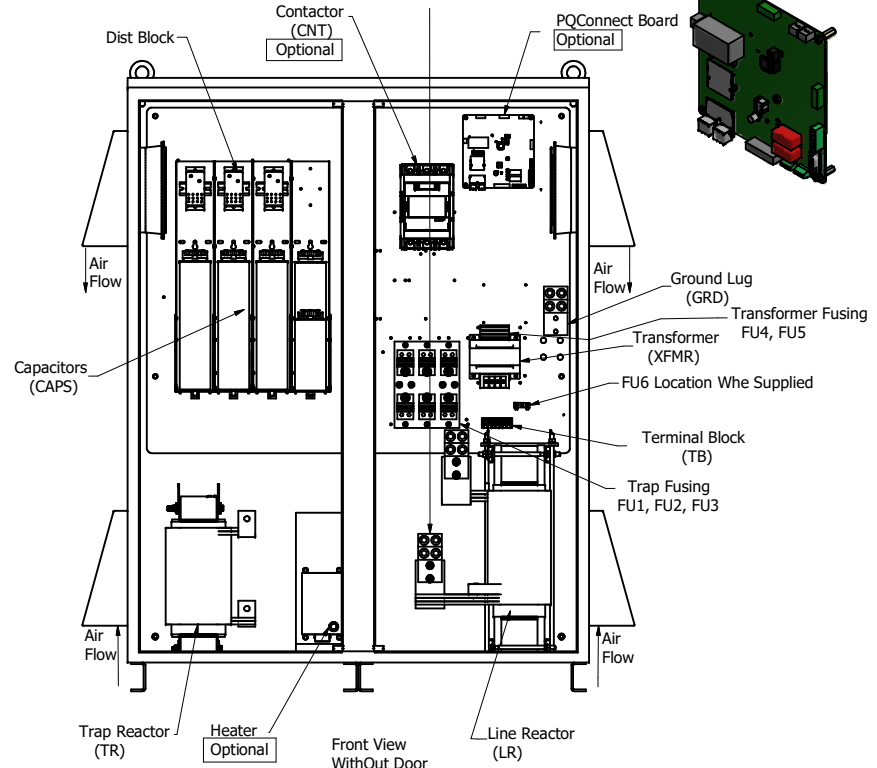
Customer Connections:
L1, L2, L3, T1, T2, T3, and Ground Lug.
Wire Range- Four, 600MCM-2AWG

Suggested Customer Wire Entry And Exit Location.
L1, L2, L3
T1, T2, T3

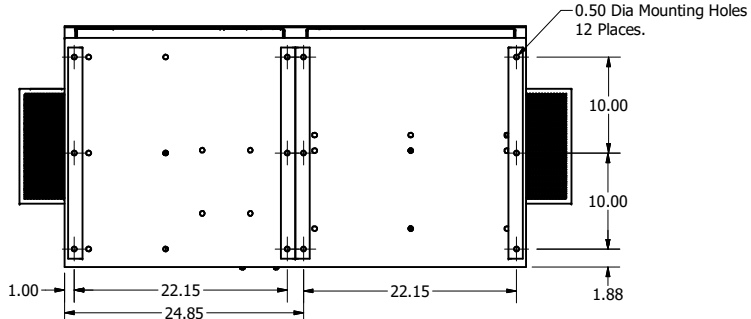
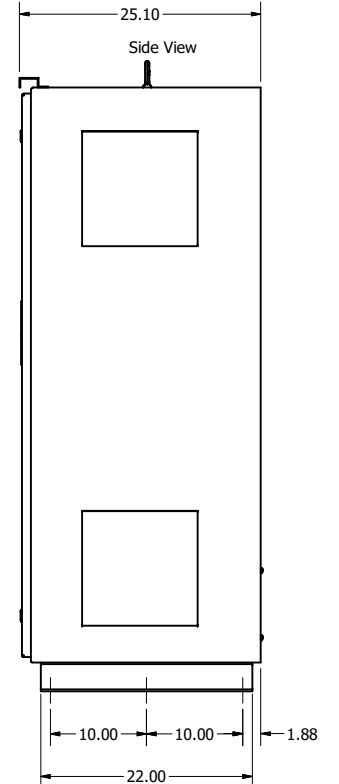
HGP Part Number	Schematic Drawing #	Approx Weight (LBS)	Shop Drawing #
HGP0700AW3S0000	28697-5S	1584	105572-T1
HGP0700AW3C0000	28697-5	1600	105572-T2
HGP0700AW3C000H	29597-H	1605	105572-T3
HGP0700AW3S1000	29597-PQ1	1587	105572-T10
HGP0700AW3C1000	29597-PQ	1603	105572-T11
HGP0700AW3C100H	29597-PCH	1607	105572-T12



Front View With Door



Front View WithOut Door



Bottom Of Enclosure

HGP0700AW3----						
Components	S0000	C0000	C000H	S1000	C1000	C100H
Line Reactor (LR)	x	x	x	X	X	X
Trap Reactor (TR)	x	x	x	X	X	X
Capacitor (Cap)	x	x	x	X	X	X
Trap Fusing, FU1, FU2, FU3	x	x	x	X	X	X
Contactor (CNT)		x	x	X	X	X
Transformer (XFMR)	x	x	x	X	X	X
XFMR Fusing, FU4, FU5	x	x	x	X	X	X
Heater			x			X
PQConnect Board				X	X	X

Customer Is Responsible For Installation to Meet All National And Local Electrical Codes.

NOTE: USE ONLY HUBS OR FITTINGS THAT COMPLY WITH UL514B FOR TYPE 3R ENCLOSURES

Material(s) Shall be RoHS Compliant

THE INFORMATION AND DESIGNS CONTAINED IN THIS DRAWING ARE CONFIDENTIAL AND THE PROPRIETARY PROPERTY OF ALLIED MOTION TECHNOLOGIES INC. AND ITS SUBSIDIARIES. NEITHER THIS DESIGN NOR ANY INFORMATION CONTAINED IN THIS DRAWING MAY BE REPRODUCED OR DISCLOSED TO OTHERS WITHOUT THE EXPRESS WRITTEN CONSENT OF ALLIED MOTION TECHNOLOGIES INC. AND ITS SUBSIDIARIES.

TOLERANCES (EXCEPT AS NOTED)			
DECIMAL			
.XX ± .25			
.XXX ± .10			
FRACTIONAL			
± 1/16			
ANGULAR			
± 1°			

TCI W132N10611 (Rev. 11/16)
Germanstown, WI 53022
© 2021 TCI, LLC
An Official Motors Group Company

Harmonic Guard Passive
HGP, 700HP, 480/3/60, Type 3R

REV. BY: DSW DATE: 5/6/14
SCALE: 1/10 DRAWING NO: 105572DG
SHEET 1 OF 1