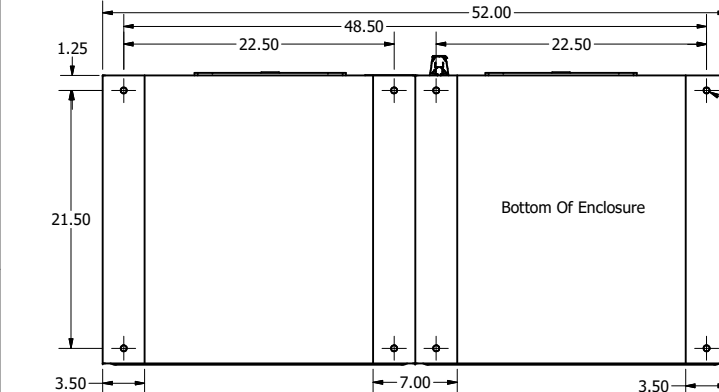
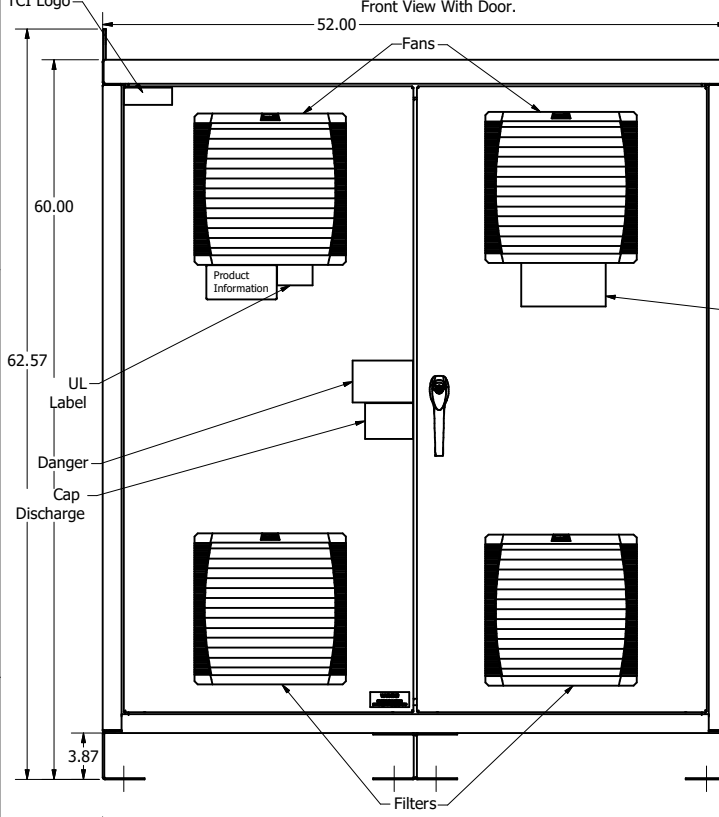


HGP Part Number	HorsePower (HP)	kVar	Maximum Amps (A)	Harmonic	Voltage (V)	Hz.	Phase
HGP0700AW1---	700	210	840	5th	480	60	3

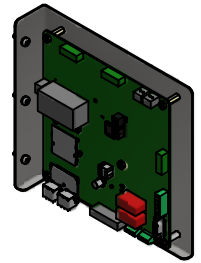
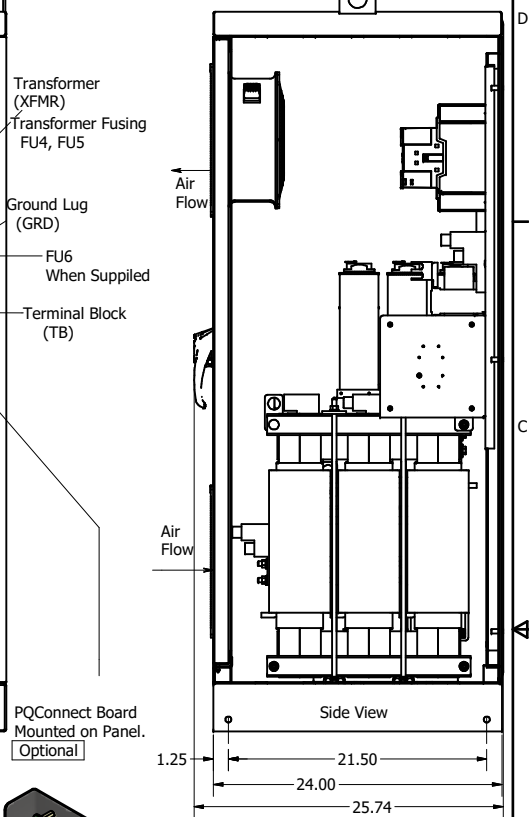
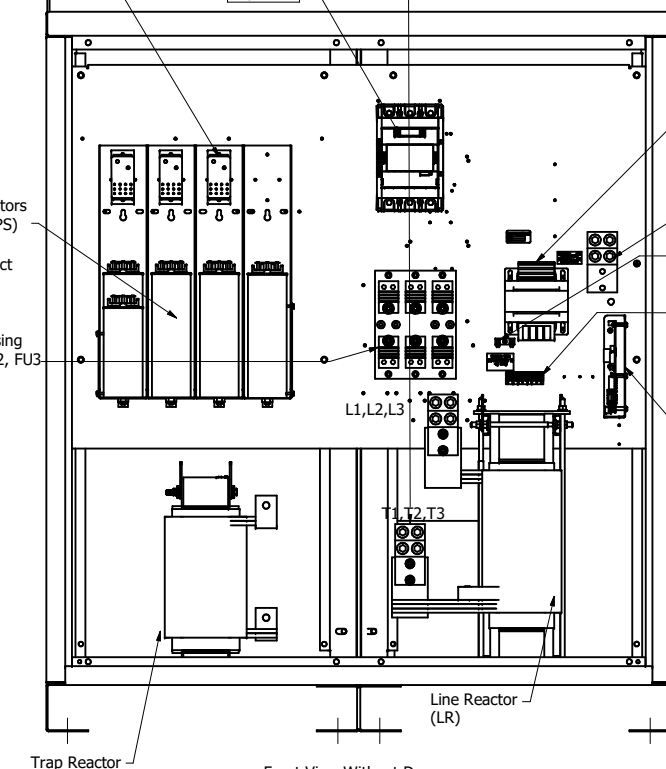


HGP0700AW-----				
Components	1S0000	1C0000	1S1000	1C1000
Line Reactor (LR)	X	X	X	X
Trap Reactor (TR)	X	X	X	X
Capacitor (Cap)	X	X	X	X
Trap Fusing, FU1, FU2, FU3	X	X	X	X
Contactors (CNT)		X		
Transformer (XFMR)	X	X	X	X
XFMR Fusing, FU4, FU5	X	X	X	X
PQConnect Board			X	X

Customer Connections: L1, L2, L3, T1, T2, T3, and Ground Lug.  
Wire Range- Four, 600MCM-2AWG

Note: For Torque Information See IOM Manual.  
L1,L2,L3  
T1,T2,T3  
Suggested Area, For Customer Wire Entry And Exit Location.

HGP Enclosed Type 1, Part Number	Schematic Drawing #	Approx Weight (LBS)	Shop Drawing #
HGP0700AW1S0000	28697-5S	1486	105498-T1
HGP0700AW1C0000	28697-5	1500	105498-T2
HGP0700AW1S1000	28697-PQ1	1488	TBD
HGP0700AW1C1000	29597-PQ	1502	105498-T13



Customer Is Responsible For Installation to Meet All National And Local Electrical Codes.

Material(s) Shall be RoHS Compliant

THE INFORMATION AND DESIGNS CONTAINED IN THIS DRAWING ARE CONFIDENTIAL AND THE PROPRIETARY PROPERTY OF ALLIED MOTION TECHNOLOGIES INC. AND ITS SUBSIDIARIES. NEITHER THIS DESIGN NOR ANY INFORMATION CONTAINED IN THIS DRAWING MAY BE REPRODUCED OR DISCLOSED TO OTHERS WITHOUT THE EXPRESS WRITTEN CONSENT OF ALLIED MOTION TECHNOLOGIES INC. AND ITS SUBSIDIARIES.

NO	REVISION	DATE	BY
F	562S GE to ABB CNT CHG.	12/8/2021	DSW
E	575S, LR and PT Terminal updated	10/25/2021	DSW
NO			

TOLERANCES (EXCEPT AS NOTED)	
DECIMAL	.XX ± .25 .XXX ± .10
FRACTIONAL	± 1/16
ANGULAR	± 1°

**TCL** W132N10611 (Rev 13) 56  
Germanstown, WI 53022  
© 2021 TCL, LLC  
An Official Motion Guard Company  
HarmonicGuard Passive, HGP0700AW1---  
HGP, 700HP, 480/3/60, Type 1  
105498DG  
SCALE: 1/8 DRAWN: DATE: 4/30/15  
REVISED: BY: CSE SHEET 1 OF 1