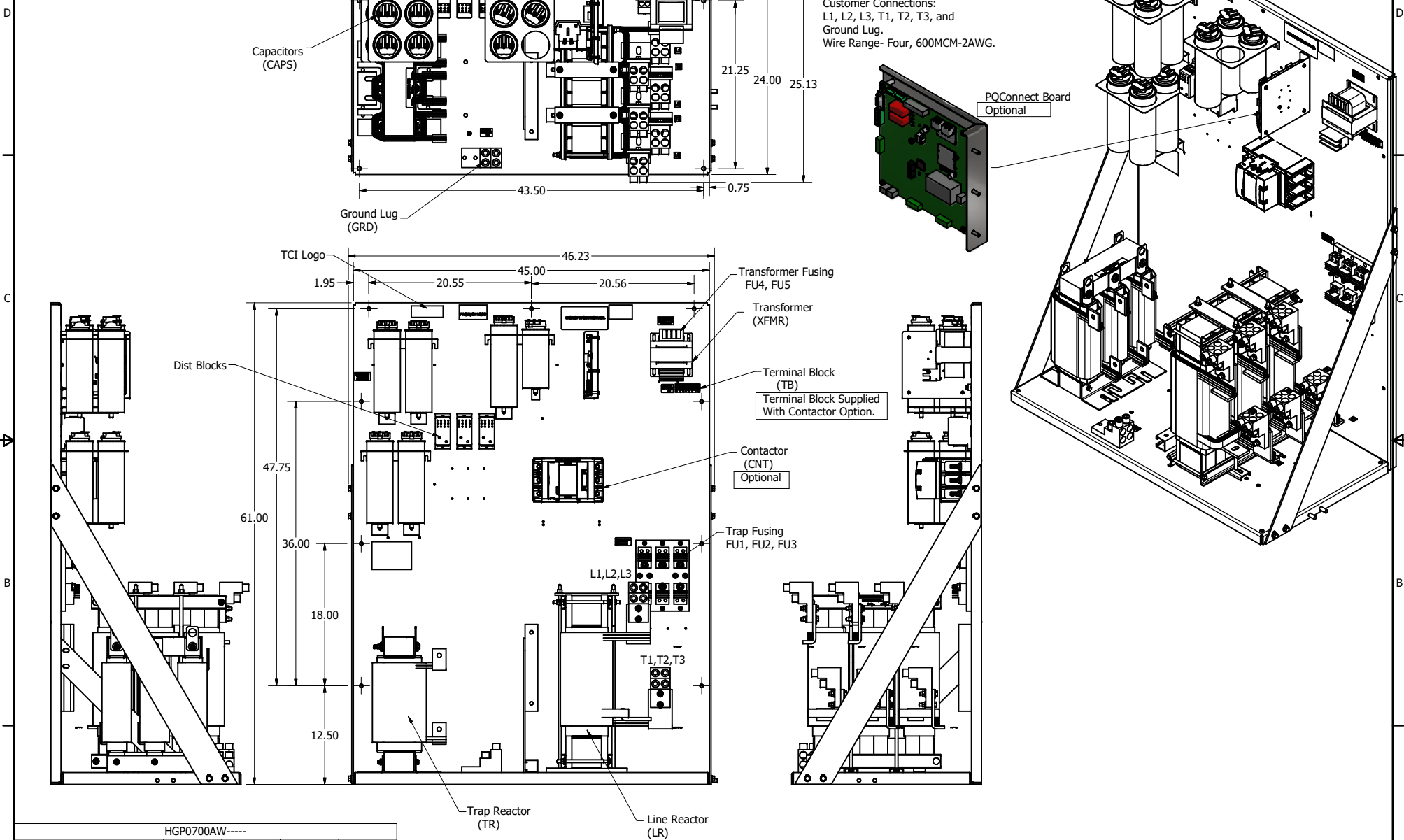


HGP Open Part Number	Schematic Drawing #	Approx Weight (LBS)
HGP0700AW0S0000	28697-1S	1210
HGP0700AW0C0000	28697-1	1250
HGP0700AW0S1000	29597-PQ1	1220
HGP0700AW0C1000	29597-PQ	1260

HGP Part Number	HorsePower (HP)	kVar	Harmonic	Voltage (V)	Hz.	Phase
HGP0700AW----	700	210	5th	480	60	3

Note: For Torque Information See IOM Manual.

Customer Connections:
L1, L2, L3, T1, T2, T3, and Ground Lug.
Wire Range- Four, 600MCM-2AWG.


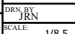
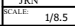


HGP0700AW----				
Components	0S0000	0C0000	0S1000	0C1000
Line Reactor (LR)	X	X	X	X
Trap Reactor (TR)	X	X	X	X
Capacitor (Cap)	X	X	X	X
Trap Fusing, FU1, FU2, FU3	X	X	X	X
Contactor (CNT)		X		X
Transformer (XFMR)		X	X	X
XFMR Fusing, FU4, FU5		X	X	X
PQConnect Board			X	X

Note: Customer is responsible for proper cooling of filter components on open panels.
Capacitors Maximum Ambient 50°C

Customer Is Responsible For Installation to Meet All National And Local Electrical Codes.

Material(s) Shall be RoHS Compliant

THE INFORMATION AND DESIGNS CONTAINED IN THIS DRAWING ARE CONFIDENTIAL AND THE PROPRIETARY PROPERTY OF ALLIED MOTION TECHNOLOGIES INC. AND ITS SUBSIDIARIES. NEITHER THIS DESIGN NOR ANY INFORMATION CONTAINED IN THIS DRAWING MAY BE REPRODUCED OR DISCLOSED TO OTHERS WITHOUT THE EXPRESS WRITTEN CONSENT OF ALLIED MOTION TECHNOLOGIES INC. AND ITS SUBSIDIARIES.						TOLERANCES (EXCEPT AS NOTED) DECIMAL .XX ± .25 .XXX ± .10		 W132N10611 Grant Drive Germantown, WI 53022 © 2021 TCI, LLC	
B	5755, Update LR, PT Terms	10/26/2021	DSW	FRACTIONAL ± 1/16		 DATE 10/24/17		Harmonic Guard Passive HGP, 700HP, 480/3/60, Open	
A	Add PQ Connect	7/25/18	DSW	ANGULAR ± 1°		 DRAWN BY		107407DG SHEET 1 OF 1	
NO	REVISION	DATE	BY						