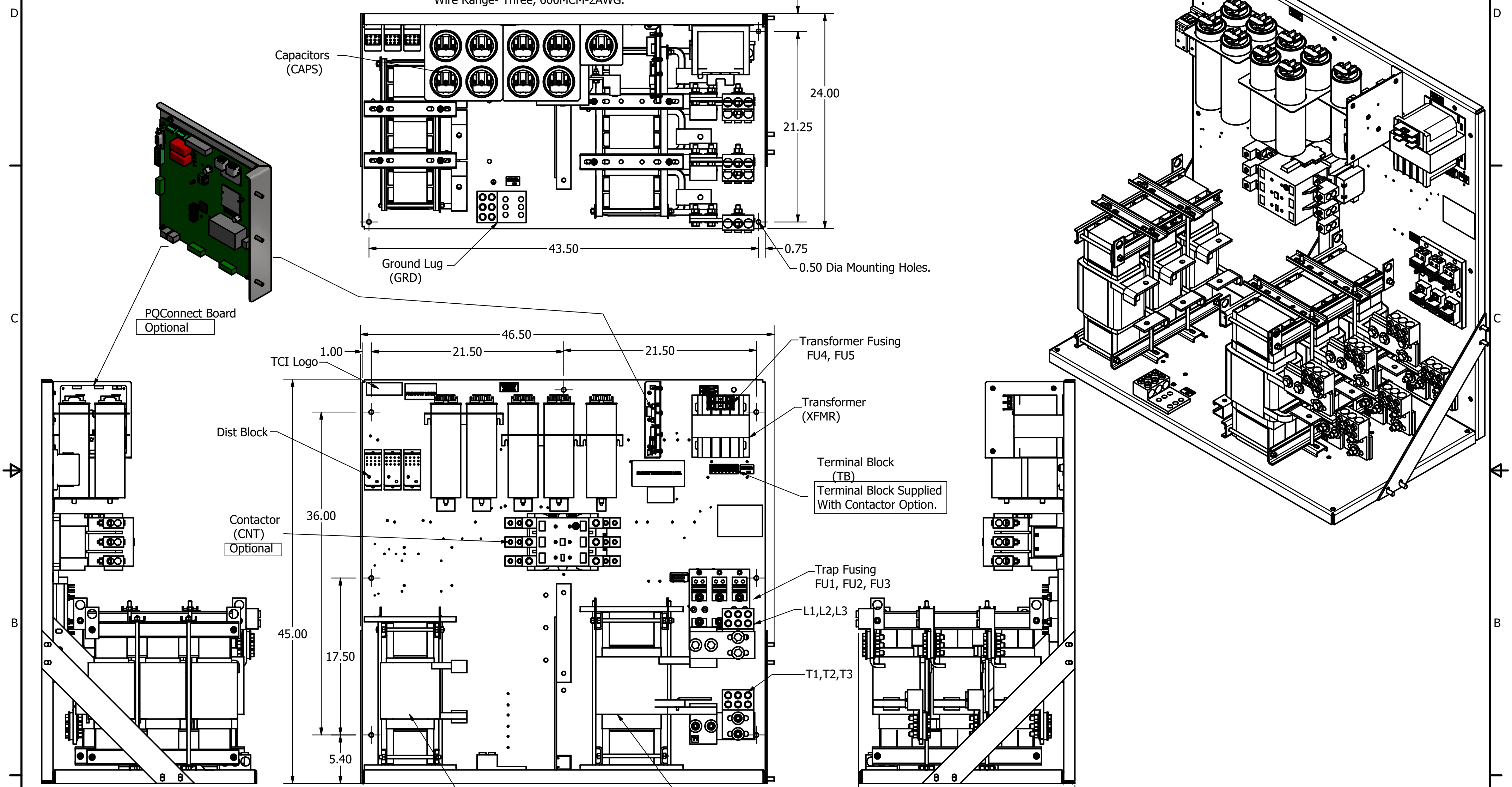


HGP Open Part Number	Schematic Drawing #	Approx Weight (LBS)
HGP0600AW0S0000	28697-1S	1060
HGP0600AW0C0000	28697-1	1100
HGP0600AW0S1000	29597-PQ1	1070
HGP0600AW0C1000	29597-PQ	1140

Note: For Torque Information See IOM Manual.

HGP Part Number	HorsePower (HP)	kVar	Harmonic	Voltage (V)	Hz.	Phase
HGP0600AW----	600	180	5th	480	60	3

Customer Connections:
L1, L2, L3, T1, T2, T3, and Ground Lug.
Wire Range- Three, 600MCM-2AWG.



Note: Customer is responsible for proper cooling of filter components on open panels.
Capacitors Maximum Ambient 50°C

HGP0600AW----				
Components	0S0000	0C0000	0S1000	0C1000
Line Reactor (LR)	X	X	X	X
Trap Reactor (TR)	X	X	X	X
Capacitor (Cap)	X	X	X	X
Trap Fusing, FU1, FU2, FU3	X	X	X	X
Contactor (CNT)		X		X
Transformer (XFMR)	X	X	X	X
XFMR Fusing, FU4, FU5	X	X	X	X
PQConnect Board			X	X

Customer Is Responsible For Installation to Meet All National And Local Electrical Codes.

Material(s) Shall be RoHS Compliant

TCI, LLC CLAIMS PROPRIETARY RIGHTS IN THE MATERIAL HEREIN DISCLOSED. IT IS SUPPLIED WITHOUT PREJUDICE TO ANY PATENT RIGHTS OF TCI AND MAY NOT BE REPRODUCED OR USED TO MANUFACTURE ANYTHING SHOWN THEREIN WITHOUT WRITTEN PERMISSION FROM TCI.	TOLERANCES (EXCEPT AS NOTED)		W132 N10611 Grant Drive Germantown, WI 53022 HarmonicGuard Passive HGP, 600HP, 480/3/60, Open
	DECIMAL		
	XX ± .25 .XXX ± .10		
	FRACTIONAL ± 1/16		
B Add PQ Connect	7/23/18	DSW	DRN BY: DSW DATE: 2/19/15
NO REVISION	DATE	BY	SCALE: 1/8 APRVD: SIZE C SHT 1 OF 1