

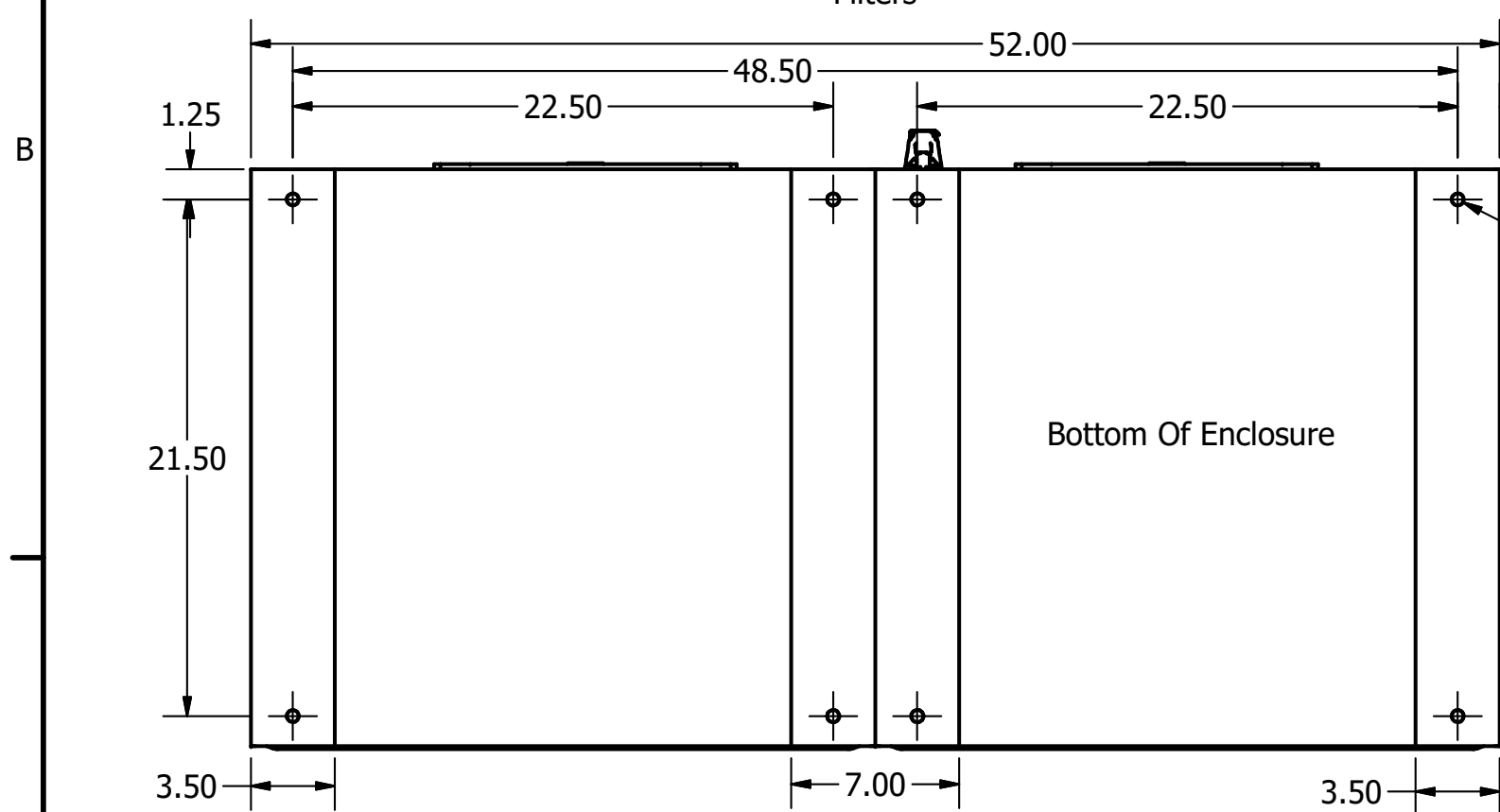
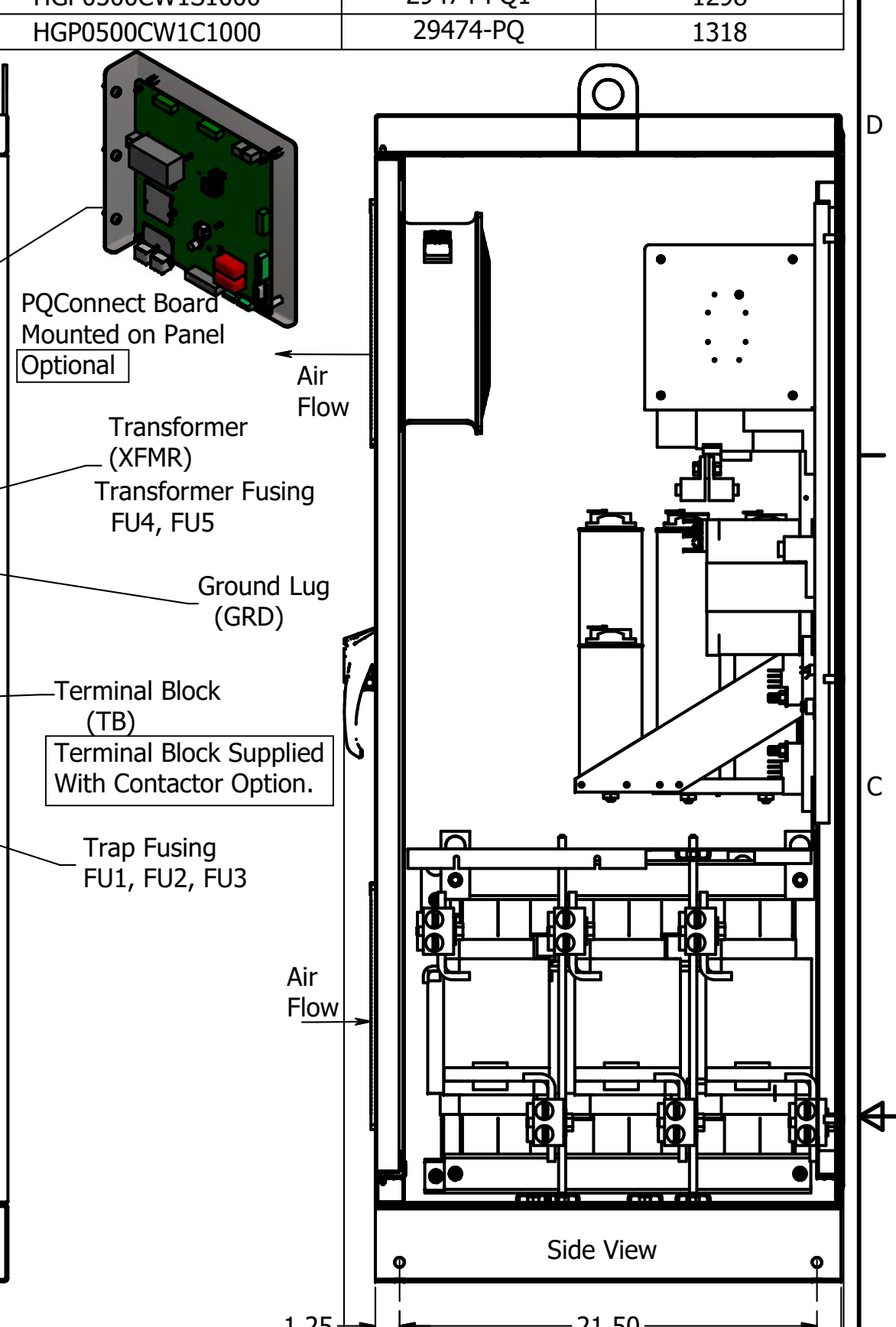
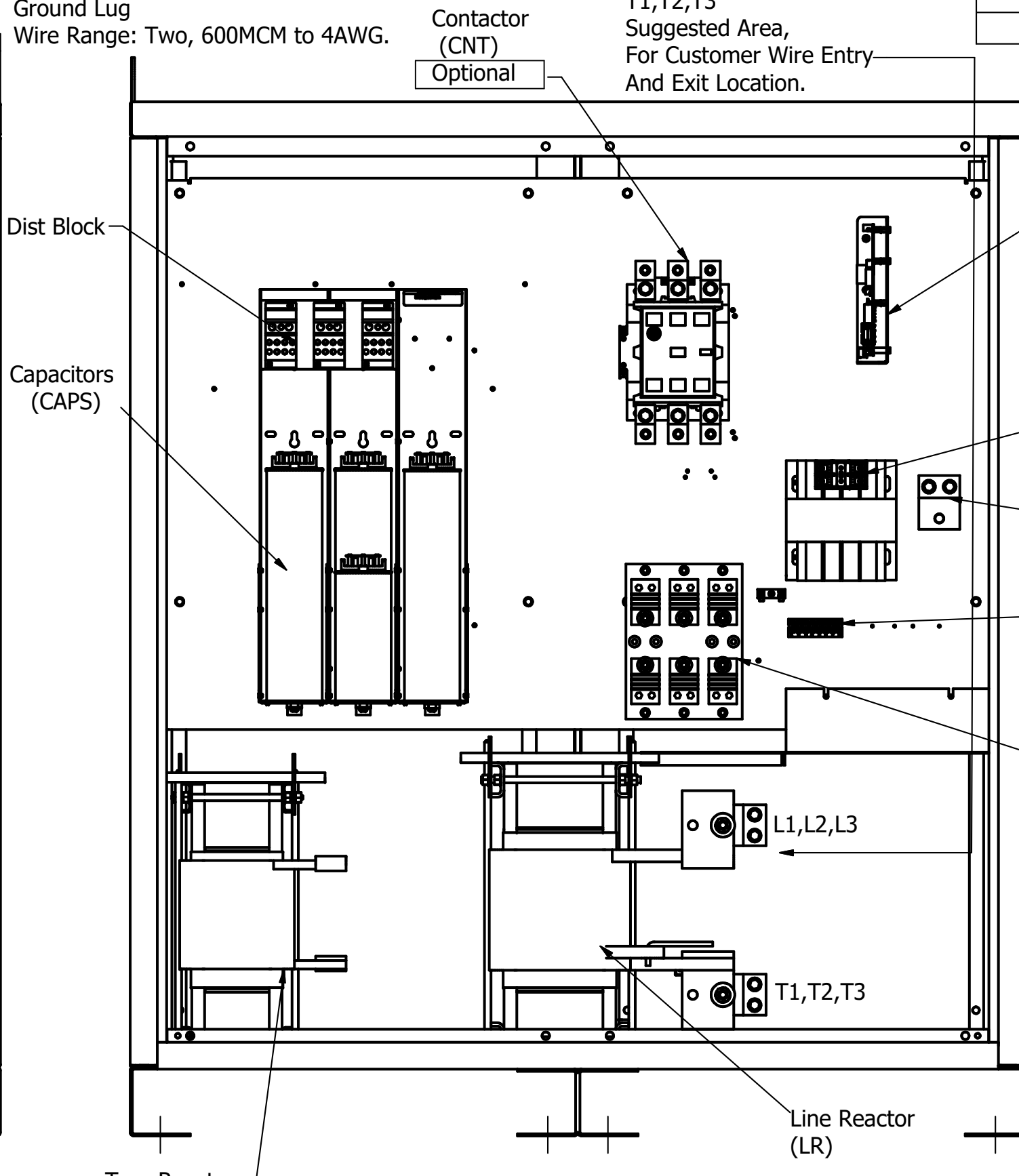
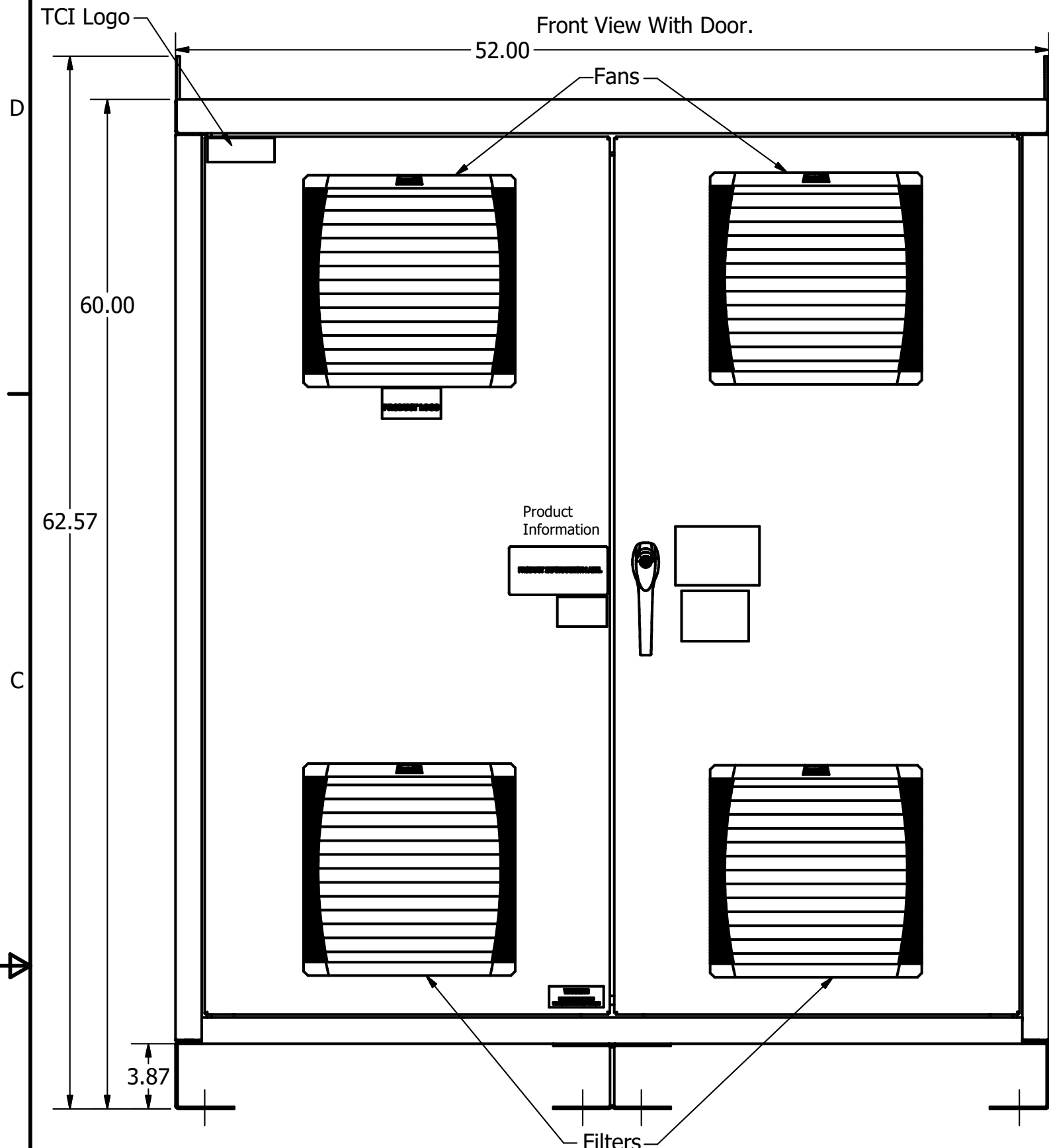
HGP Part Number	HorsePower (HP)	kVar	Harmonic	Voltage (V)	Hz.	Phase
HGP0500CW1---	500	150	5th	600	60	3

Customer Connections.  
L1, L2, L3, T1, T2, T3  
Wire Range: Two, 600MCM to 4AWG.

Note: For Torque Information  
See IOM Manual.

L1,L2,L3  
T1,T2,T3  
Suggested Area,  
For Customer Wire Entry  
And Exit Location.

HGP Eclosed Type 1 Part Number	Schematic Drawing #	Approx Weight (LBS)
HGP0500CW1S0000	29474-3	1296
HGP0500CW1C0000	29474-2	1316
HGP0500CW1S1000	29474-PQ1	1298
HGP0500CW1C1000	29474-PQ	1318



HGP0500CW-----				
Components	1S0000	1C0000	1S1000	1C1000
Line Reactor (LR)	X	X	X	X
Trap Reactor (TR)	X	X	X	X
Capacitor (Cap)	X	X	X	X
Trap Fusing, FU1, FU2, FU3	X	X	X	X
Contactor (CNT)		X		X
Transformer (XFMR)	X	X	X	X
XFMR Fusing, FU4, FU5	X	X	X	X
PQConnect Board			X	X

Customer Is Responsible For Installation to  
Meet All National And Local Electrical Codes.

Material(s) Shall be RoHS Compliant

TCI, LLC CLAIMS PROPRIETARY RIGHTS IN THE MATERIAL HEREIN DISCLOSED. IT IS SUPPLIED WITHOUT PREJUDICE TO ANY PATENT RIGHTS OF TCI AND MAY NOT BE REPRODUCED OR USED TO MANUFACTURE ANYTHING SHOWN THEREIN WITHOUT WRITTEN PERMISSION FROM TCI.	TOLERANCES (EXCEPT AS NOTED)			W132 N10611 Grant Drive Germantown, WI 53022  HarmonicGuard Passive HGP, 500HP, 600/3/60, Type 1
	DECIMAL			
	.XX ± .25 .XXX ± .10			
	FRACTIONAL ± 1/16			
A	As Designed	8/28/18	DSW	DRN BY: DSW DATE: 8/28/18 SCALE: 1/8 APVD:
NO	REVISION	DATE	BY	105529DG SIZE C SHT 1 OF 1