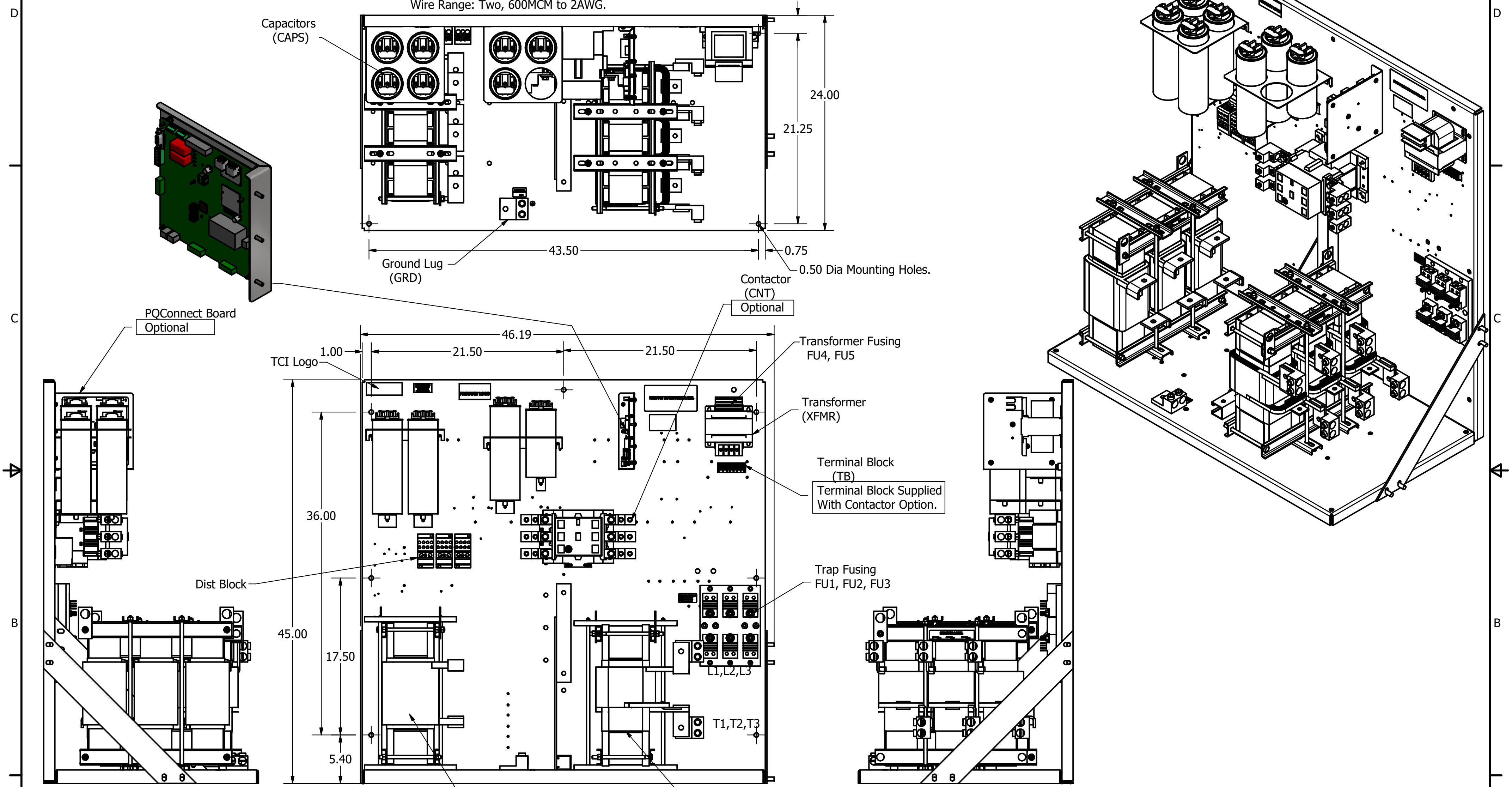


| HGP Open Part Number | Schematic Drawing # | Approx Weight (LBS) |
|----------------------|---------------------|---------------------|
| HGP0450AW0S0000 | 28697-1S | 800 |
| HGP0450AW0C0000 | 28697-1 | 840 |
| HGP0450AW0S1000 | 29597-PQ1 | 810 |
| HGP0450AW0C1000 | 29597-PQ | 850 |

Note: For Torque Information
See IOM Manual.
Customer Connections.
L1, L2, L3, T1, T2, T3
Wire Range: Two, 600MCM to 2AWG.

| HGP Part Number | HorsePower (HP) | kVar | Harmonic | Voltage (V) | Hz. | Phase |
|-----------------|-----------------|------|----------|-------------|-----|-------|
| HGP0450AW---- | 450 | 135 | 5th | 480 | 60 | 3 |

Ground Lug
Wire Range: Two, 600MCM to 2AWG.



Note: Customer is responsible for proper cooling of filter components on open panels.
Capacitors Maximum Ambient 50°C

| HGP0450AW---- | | | | |
|----------------------------|--------|--------|--------|--------|
| Components | 0S0000 | 0C0000 | 0S1000 | 0C1000 |
| Line Reactor (LR) | X | X | X | X |
| Trap Reactor (TR) | X | X | X | X |
| Capacitor (Cap) | X | X | X | X |
| Trap Fusing, FU1, FU2, FU3 | X | X | X | X |
| Contactor (CNT) | | X | | X |
| Transformer (XFMR) | X | X | X | X |
| XFMR Fusing, FU4, FU5 | X | X | X | X |
| PQCConnect Board | | | X | X |

Customer Is Responsible For Installation to Meet All National And Local Electrical Codes.

Material(s) Shall be RoHS Compliant

| | | | |
|--|------------------------------|-----|--|
| TCI, LLC CLAIMS PROPRIETARY RIGHTS IN THE MATERIAL HEREIN DISCLOSED. IT IS SUPPLIED WITHOUT PREJUDICE TO ANY PATENT RIGHTS OF TCI AND MAY NOT BE REPRODUCED OR USED TO MANUFACTURE ANYTHING SHOWN THEREIN WITHOUT WRITTEN PERMISSION FROM TCI. | TOLERANCES (EXCEPT AS NOTED) | | W132 N10611 Grant Drive Germantown, WI 53022 HarmonicGuard Passive HGP, 450HP, 480/3/60, Open |
| | DECIMAL | | |
| | XX ± .25 .XXX ± .10 | | |
| | FRACTIONAL ± 1/16 | | |
| C Add PQ Connect | 7/23/18 | DSW | DRN BY: DSW DATE: 2/16/15 |
| NO REVISION | DATE | BY | SCALE: 1/8 APRVD: 105376DG |
| | | | SIZE C SHT 1 OF 1 |