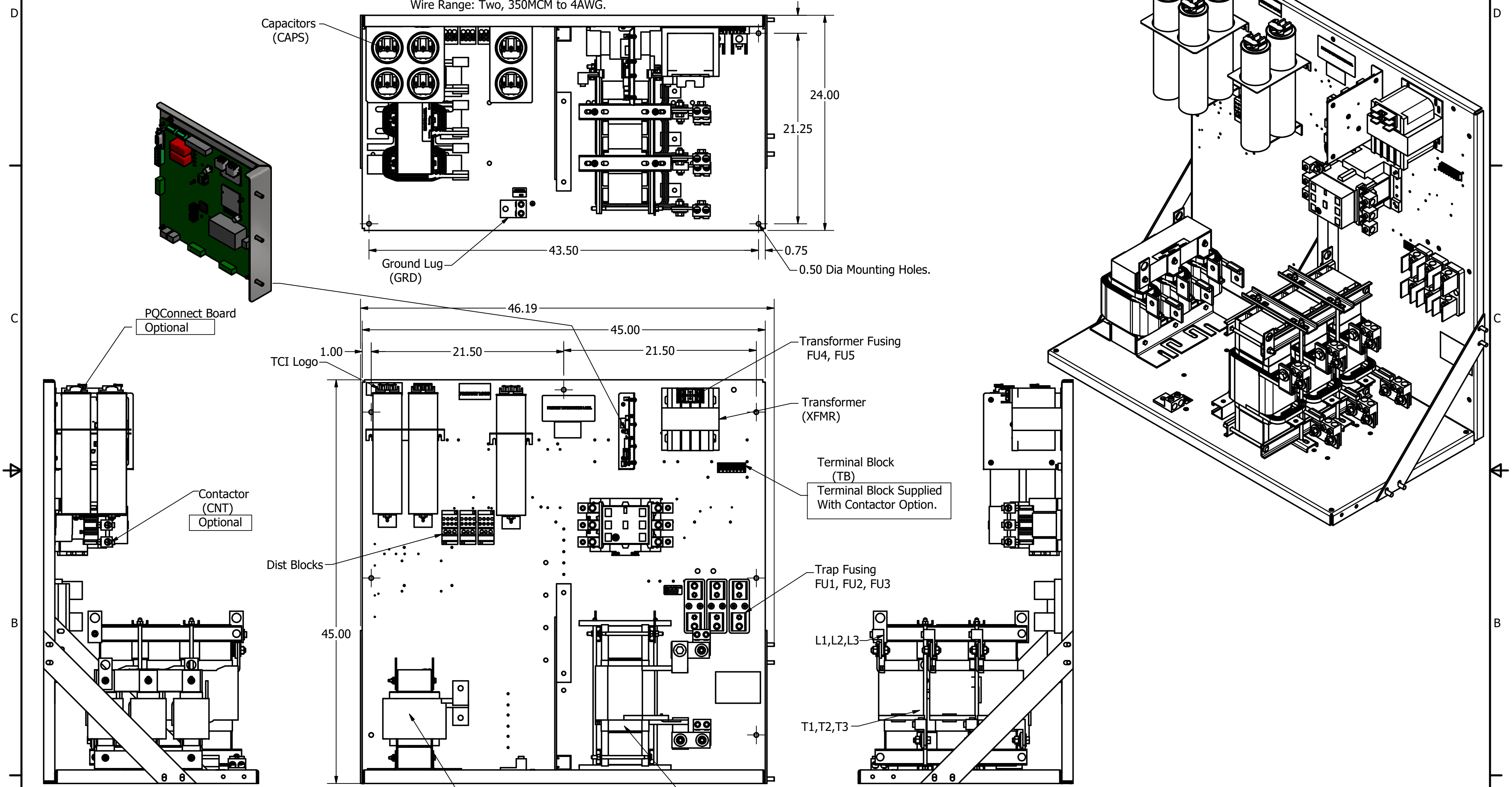


HGP Open Part Number	Schematic Drawing #	Approx Weight (LBS)
HGP0400CW0S0000	29474-3	680
HGP0400CW0C0000	29474-2	693
HGP0400CW0S1000	29474-PQ1	682
HGP0400CW0C1000	29474-PQ	695

Note: For Torque Information See IOM Manual.
Customer Connections.
L1, L2, L3, T1, T2, T3
Wire Range: Two, 350MCM to 4AWG.

HGP Part Number	HorsePower (HP)	kVar	Harmonic	Voltage (V)	Hz.	Phase
HGP0400CW----	400	120	5th	600	60	3

Ground Lug
Wire Range: Two, 350MCM to 4AWG.



Note: Customer is responsible for proper cooling of filter components on open panels.
Capacitors Maximum Ambient 50°C

HGP0400CW----				
Components	0S0000	0C0000	0S1000	0C1000
Line Reactor (LR)	X	X	X	X
Trap Reactor (TR)	X	X	X	X
Capacitor (Cap)	X	X	X	X
Trap Fusing, FU1, FU2, FU3	X	X	X	X
Contactor (CNT)		X		X
Transformer (XFMR)	X	X	X	X
XFMR Fusing, FU4, FU5	X	X	X	X
PQConnect Board			X	X

Customer Is Responsible For Installation to Meet All National And Local Electrical Codes.

Material(s) Shall be RoHS Compliant

TCI, LLC CLAIMS PROPRIETARY RIGHTS IN THE MATERIAL HEREIN DISCLOSED. IT IS SUPPLIED WITHOUT PREJUDICE TO ANY PATENT RIGHTS OF TCI AND MAY NOT BE REPRODUCED OR USED TO MANUFACTURE ANYTHING SHOWN THEREIN WITHOUT WRITTEN PERMISSION FROM TCI.	TOLERANCES (EXCEPT AS NOTED)		W132 N10611 Grant Drive Germantown, WI 53022 HarmonicGuard Passive HGP, 400HP, 600/3/60, Open
	DECIMAL		
	.XX ± .25 .XXX ± .10		
	FRACTIONAL ± 1/16		
B Add PQ Connect	8/27/18	DSW	DRN BY: DSW DATE: 2/3/15
NO REVISION	DATE	BY	SCALE: 1/8 APRVD: 105896DG
ANGULAR ± 1°			SIZE C SHT 1 OF 1