

HGP Part Number	Schematic Drawing #	Approx Weight (LBS)
HGP0300AW3S0000	28697-5S	615
HGP0300AW3C0000	28697-5	620
HGP0300AW3C000H	28697-5H	625
HGP0300AW3S1000	29597-PQ1	618
HGP0300AW3C1000	29597-PQ	623
HGP0300AW3C100H	29597-PQH	628

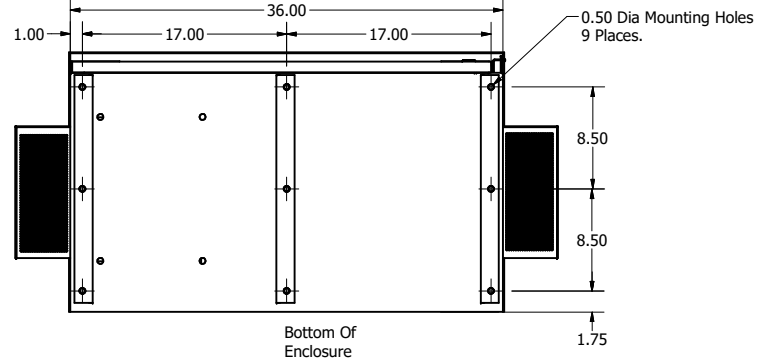
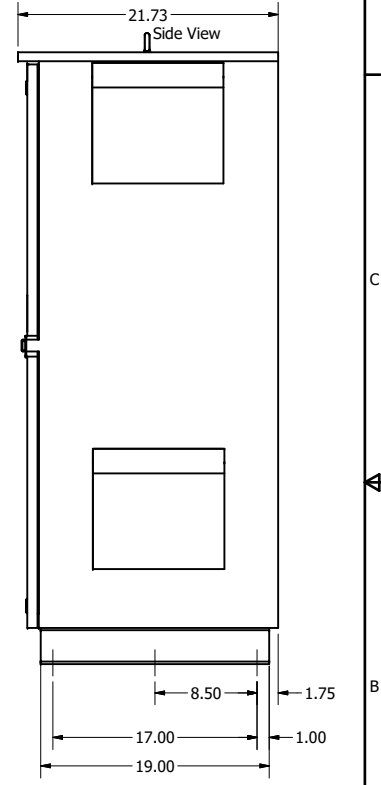
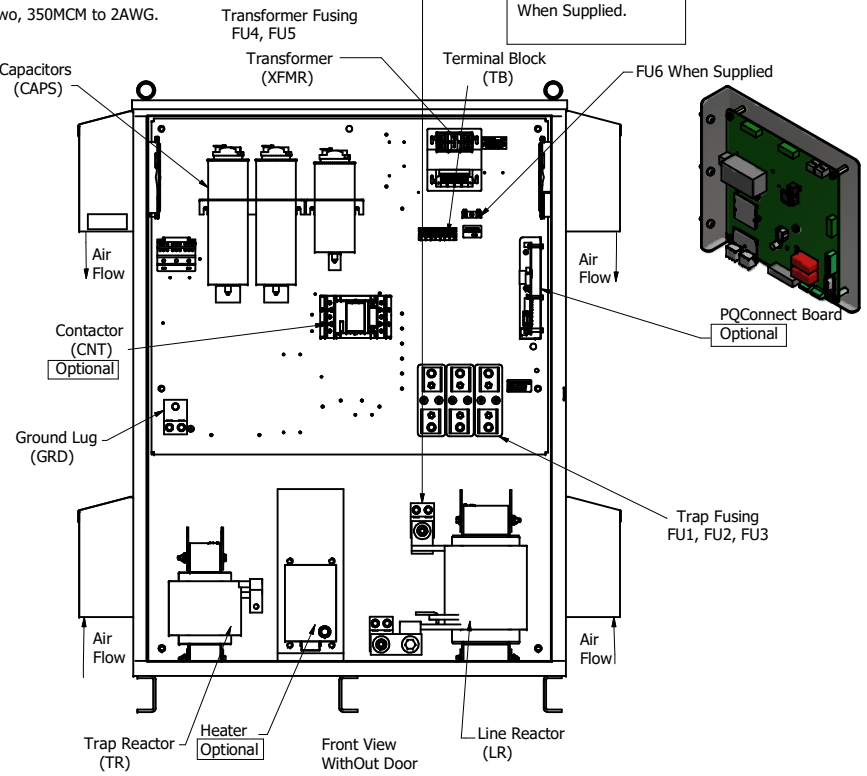
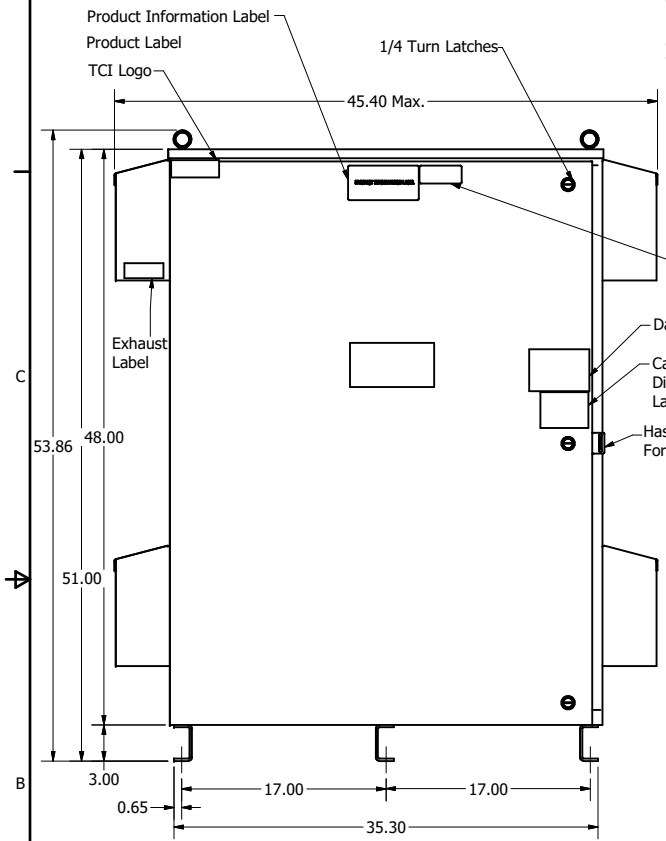
HGP Part Number	HorsePower (HP)	kVar	Harmonic	Maximum Amps (A)	Voltage (V)	Hz.	Phase
HGP0300AW3----	300	90	5th	361	480	60	3

Note: For Torque Information See IOM Manual
 Customer Connections. L1, L2, L3, T1, T2, T3
 Wire Range: Two, 350MCM to 2AWG.

Suggested Customer Wire Entry And Exit Location.
 L1, L2, L3
 T1, T2, T3

Ground Lug Wire Range: Two, 350MCM to 2AWG.

Terminal Block Location When Supplied.



Components	HGP0300AW3----					
	S0000	C0000	C000H	S1000	C1000	C100H
Line Reactor (LR)	x	x	x	X	X	X
Trap Reactor (TR)	x	x	x	X	X	X
Capacitor (Cap)	x	x	x	X	X	X
Trap Fusing, FU1, FU2, FU3	x	x	x	X	X	X
Contactor (CNT)		x	x		X	X
Transformer (XFMR)	x	x	x	X	X	X
XFMR Fusing, FU4, FU5	x	x	x	X	X	X
Heater			x			X
PQConnect Board				X	X	X

Customer Is Responsible For Installation to Meet All National And Local Electrical Codes.
 NOTE: USE ONLY HUBS OR FITTINGS THAT COMPLY WITH UL514B FOR TYPE 3R ENCLOSURES

Material(s) Shall be RoHS Compliant

THE INFORMATION AND DESIGNS CONTAINED IN THIS DRAWING ARE CONFIDENTIAL AND THE PROPRIETARY PROPERTY OF ALLIED MOTION TECHNOLOGIES INC. AND ITS SUBSIDIARIES. NEITHER THIS DESIGN NOR ANY INFORMATION CONTAINED IN THIS DRAWING MAY BE REPRODUCED OR DISCLOSED TO OTHERS WITHOUT THE EXPRESS WRITTEN CONSENT OF ALLIED MOTION TECHNOLOGIES INC. AND ITS SUBSIDIARIES.	REV	DATE	BY	SCALE	TOLERANCES (EXCEPT AS NOTED)	 W132N10611 (Rev 13) Feb Germantown, WI 53022 © 2022 TCI, LLC An Official Motors Company Harmonic Guard Passive HGP, 300HP, 480/3/60, Type 3R
	11	2/1/2022	DSW		DECIMAL .XX ± .25 .XXX ± .10	
	NO				FRACTIONAL ± 1/16 ANGULAR ± 1°	
					DRN BY: DSW DATE: 1/16/14 SCALE: 1/8 DRWN: HSE 105566DG SHT 1 OF 1	