

HGP Open Part Number	Schematic Drawing #	Approx Weight (LBS)
HGP0300AW0S0000	28697-1S	477
HGP0300AW0C0000	28697-1	490
HGP0300AW0S1000	29597-PQ1	479
HGP0300AW0C1000	29597-PQ	492

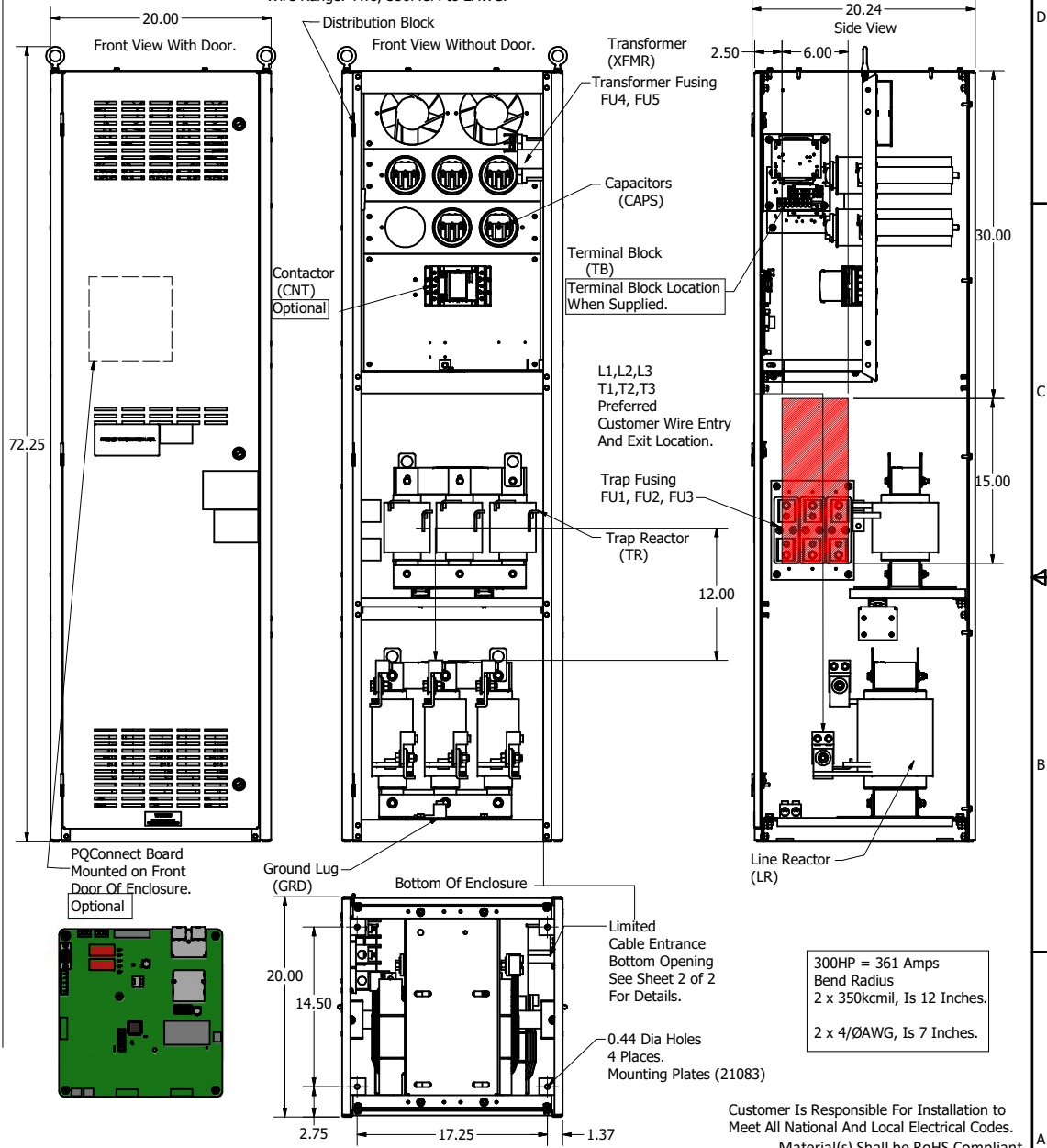
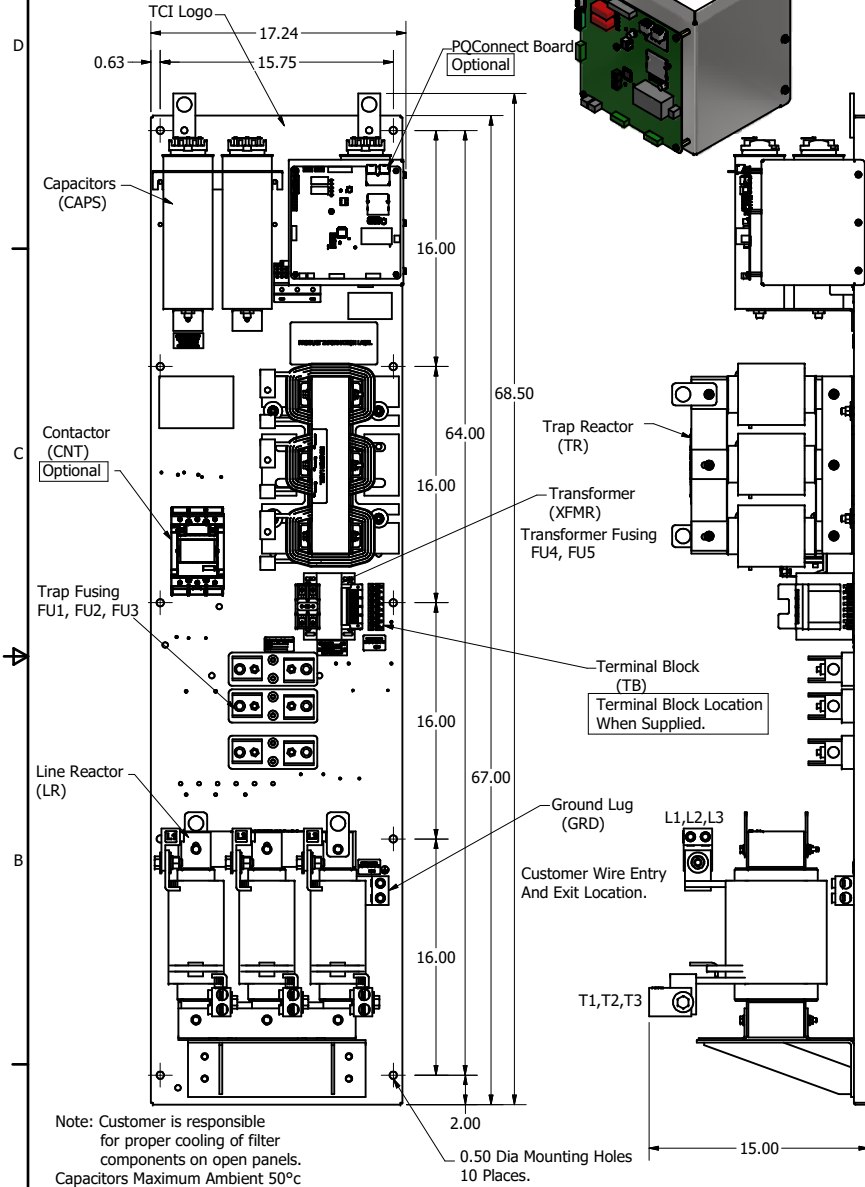
HGP Part Number	HorsePower (HP)	kVar	Harmonic	Voltage (V)	Maximum Amps (A)	Hz.	Phase
HGP0300AW----	300	90	5th	480	361	60	3

Note: For Torque Information See IOM Manual.

Customer Connections.
L1, L2, L3, T1, T2, T3
Wire Range: Two, 350MCM to 2AWG.

HGP Enclosed Type 1 Part Number	Schematic Drawing #	Approx Weight (LBS)
HGP0300AW1S0000	28697-5S	630
HGP0300AW1C0000	28697-5	640
HGP0300AW1S1000	29597-PQ1	633
HGP0300AW1C1000	29597-PQ	643

Ground Lug
Wire Range: Two, 350MCM to 2AWG.



Note: Customer is responsible for proper cooling of filter components on open panels. Capacitors Maximum Ambient 50°C

300HP = 361 Amps
Bend Radius
2 x 350kcmil, Is 12 Inches.
2 x 4/0AWG, Is 7 Inches.

Components	HGP0300AW----			
	0S0000/1S0000	0C0000/1C0000	0S1000/1S1000	0C1000/1C1000
Line Reactor (LR)	X	X	X	X
Trap Reactor (TR)	X	X	X	X
Capacitor (Cap)	X	X	X	X
Trap Fusing, FU1, FU2, FU3	X	X	X	X
Contactor (CNT)		X		X
Transformer (XFMR)	X (Type 1)	X	X	X
XFMR Fusing, FU4, FU5	X (Type 1)	X	X	X
PQConnect Board			X	X

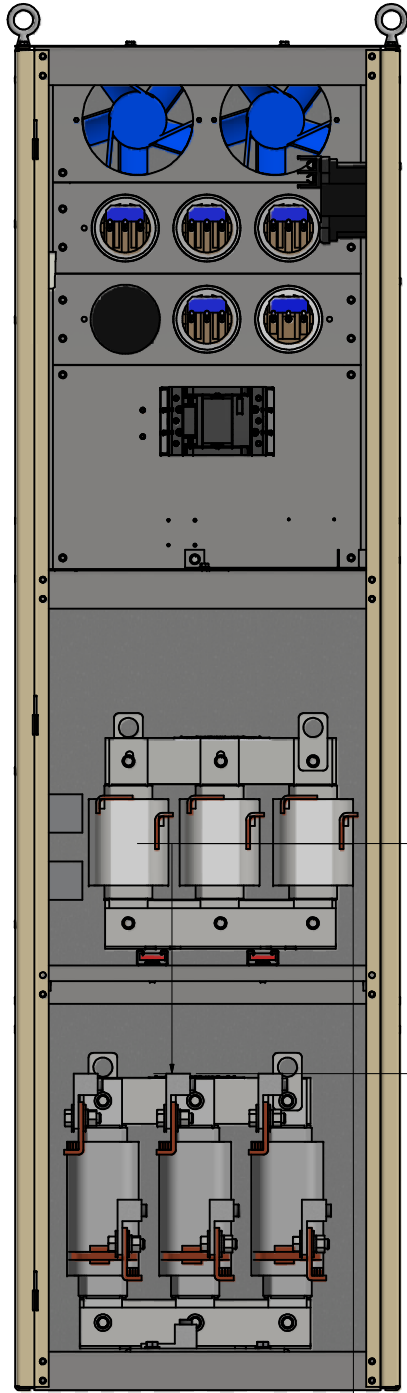
THE INFORMATION AND DESIGNS CONTAINED IN THIS DRAWING ARE CONFIDENTIAL AND THE PROPRIETARY PROPERTY OF ALLIED MOTION TECHNOLOGIES INC. AND ITS SUBSIDIARIES. NEITHER THIS DESIGN NOR ANY INFORMATION CONTAINED IN THIS DRAWING MAY BE REPRODUCED OR DISCLOSED TO OTHERS WITHOUT THE EXPRESS WRITTEN CONSENT OF ALLIED MOTION TECHNOLOGIES INC. AND ITS SUBSIDIARIES.

NO	REVISION	DATE	BY
J	6148, Update Line Inductor	1/20/2023	DSW
I	5636, GE to ABB CNT Change	11/29/2021	DSW
H	5471, Drawing Updates, Wire Entry Details	1/11/2021	DSW

TOLERANCES (EXCEPT AS NOTED)	
DECIMAL	.XX ± .25 .XXX ± .10
FRACTIONAL	± 1/16
ANGULAR	± 1°

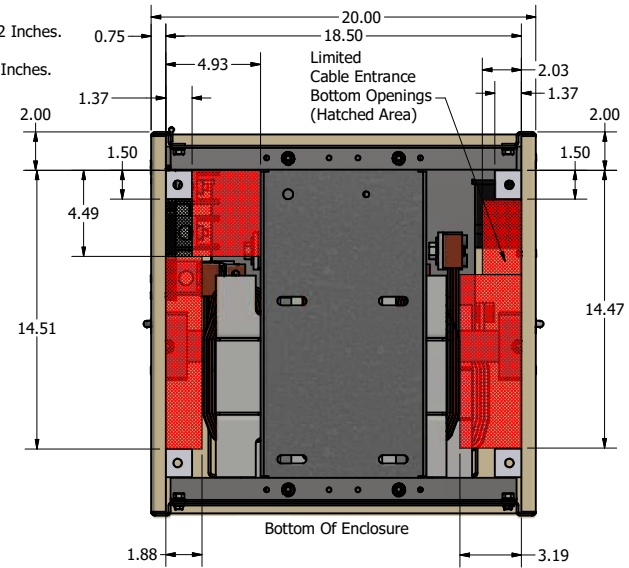
Customer Is Responsible For Installation to Meet All National And Local Electrical Codes.
Material(s) Shall be RoHS Compliant

W182N10611 (Rev 11/20) Germanstown, WI 53022 © 2021 TCI, LLC
 An Official Motion Gateway
 HGP0300AW----, HarmonicGuard Passive
 HGP, 300HP, 480/3/60, Open / Type I
 DSN: BSW DATE: 4/21/2014 105492DG
 SCALE: 1/8 DRAWN: JCE SHEET 1 OF 2



Limited Cable Entrance Bottom Openings (Hatched Area)

300HP = 361 Amps
 Bend Radius
 2 x 350kcmil, Is 12 Inches.
 2 x 4/0AWG, Is 7 Inches.



Customer Is Responsible For Installation to Meet All National And Local Electrical Codes.

Material(s) Shall be RoHS Compliant

THE INFORMATION AND DESIGNS CONTAINED IN THIS DRAWING ARE CONFIDENTIAL AND THE PROPRIETARY PROPERTY OF ALLIED MOTION TECHNOLOGIES INC. AND ITS SUBSIDIARIES. NEITHER THIS DESIGN NOR ANY INFORMATION CONTAINED IN THIS DRAWING MAY BE REPRODUCED OR DISCLOSED TO OTHERS WITHOUT THE EXPRESS WRITTEN CONSENT OF ALLIED MOTION TECHNOLOGIES INC. AND ITS SUBSIDIARIES.

NO	REVISION	DATE	BY

TOLERANCES (EXCEPT AS NOTED)
DECIMAL
.XX ± .25
.XXX ± .10
FRACTIONAL
± 1/16
ANGULAR
± 1°


 W132N10611 (Rev 13) 5/6
 Germantown, WI 53022
 © 2021 TCL, LLC
 An **Allied Motion Company**
 HGP, 300HP, 480/3/60, Type 1
 Bottom Entry Detail
 DWN BY: DSW DATE: 12/10/2024 105492DG
 SCALE: 1/5 DRAWN: CS
 SHEET 2 OF 2

See Sheet 1, for Revision