

HGP Open Part Number	Schematic Drawing #	Approx Weight (LBS)
HGP0250AW0S0000	28697-1S	350
HGP0250AW0C0000	28697-1	395
HGP0250AW0S1000	29597-PQ1	352
HGP0250AW0C1000	29597-PQ	397

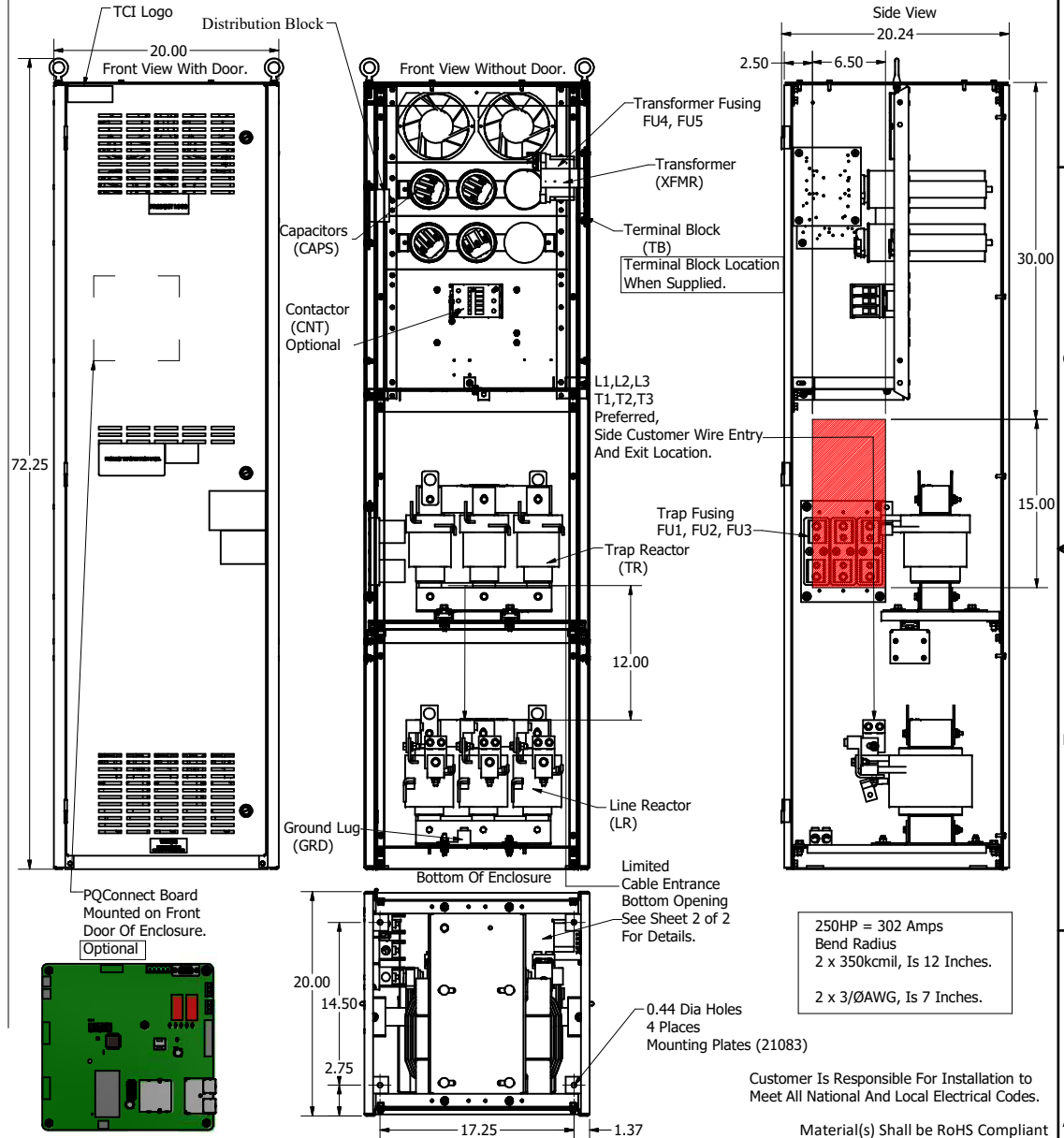
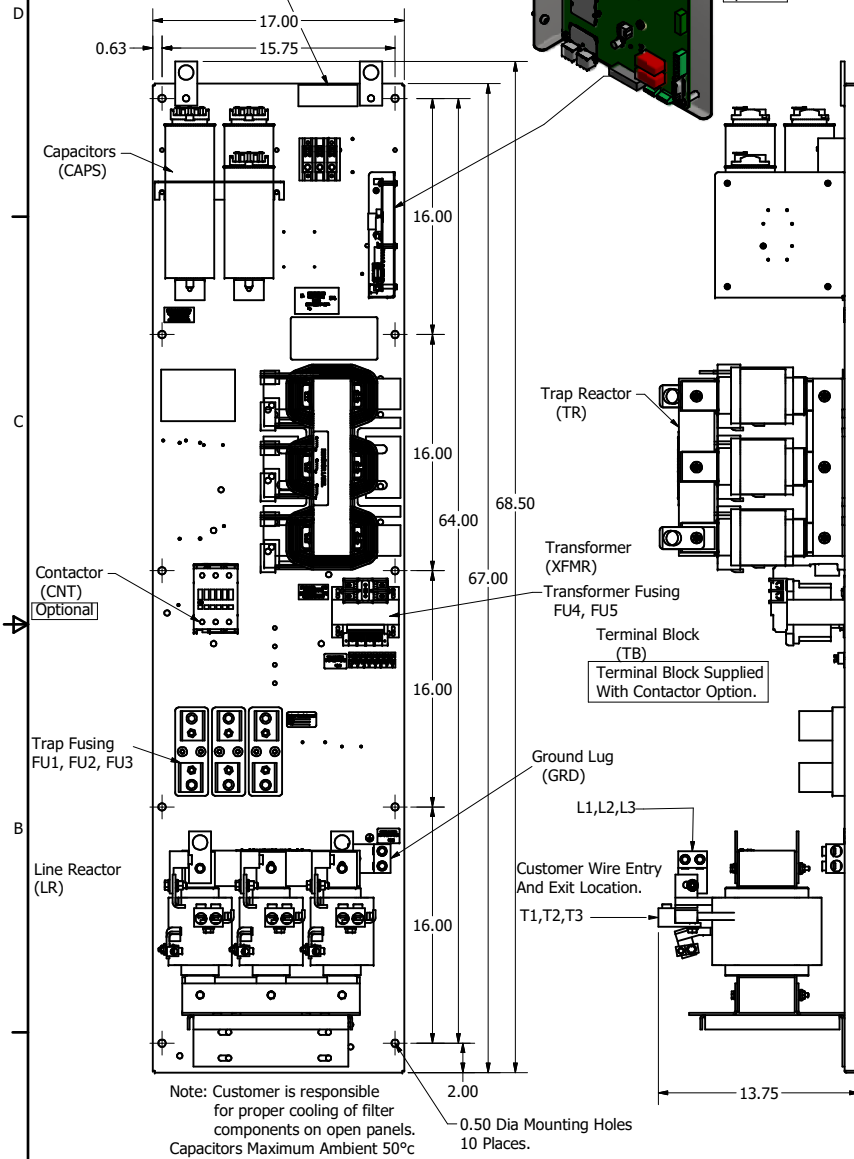
HGP Part Number	HorsePower (HP)	kVar	Harmonic	Voltage (V)	Maximum Amps (A)	Hz.	Phase
HGP0250AW----	250	75	5th	480	302	60	3

HGP Eclosed Type 1 Part Number	Schematic Drawing #	Approx Weight (LBS)
HGP0250AW1S0000	28697-5S	535
HGP0250AW1C0000	28697-5	545
HGP0250AW1S1000	29597-PQ1	536
HGP0250AW1C1000	29597-PQ	546

Note: For Torque Information See IOM Manual.

Customer Connections.
L1, L2, L3, T1, T2, T3
Wire Range: Two, 350MCM to 2AWG.

Ground Lug
Wire Range: Two, 350MCM to 2AWG.



HGP0250AW----				
Components	0S0000/1S0000	0C0000/1C0000	0S1000/1S1000	0C1000/1C1000
Line Reactor (LR)	X	X	X	X
Trap Reactor (TR)	X	X	X	X
Capacitor (Cap)	X	X	X	X
Trap Fusing, FU1, FU2, FU3	X	X	X	X
Contactor (CNT)	X	X	X	X
Transformer (XFMR)	X (Type 1)	X	X	X
XFMR Fusing, FU4, FU5	X (Type 1)	X	X	X
PQConnect Board			X	X

THE INFORMATION AND DESIGNS CONTAINED IN THIS DRAWING ARE CONFIDENTIAL AND THE PROPRIETARY PROPERTY OF ALLIED MOTION TECHNOLOGIES INC. AND ITS SUBSIDIARIES. NEITHER THIS DESIGN NOR ANY INFORMATION CONTAINED IN THIS DRAWING MAY BE REPRODUCED OR DISCLOSED TO OTHERS WITHOUT THE EXPRESS WRITTEN CONSENT OF ALLIED MOTION TECHNOLOGIES INC. AND ITS SUBSIDIARIES.

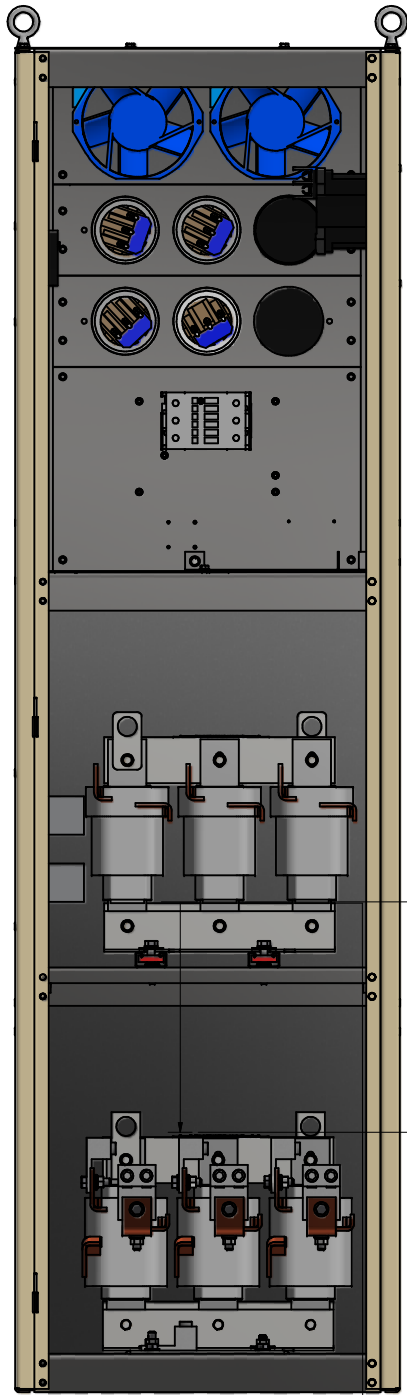
NO	REVISION	DATE	BY
11	5471, Drawing Updates, Wire Entry Details	1/11/2021	DSW

TOLERANCES (EXCEPT AS NOTED)	
DECIMAL	.XX ± .25 .XXX ± .10
FRACTIONAL	± 1/16
ANGULAR	± 1°

Customer Is Responsible For Installation to Meet All National And Local Electrical Codes.

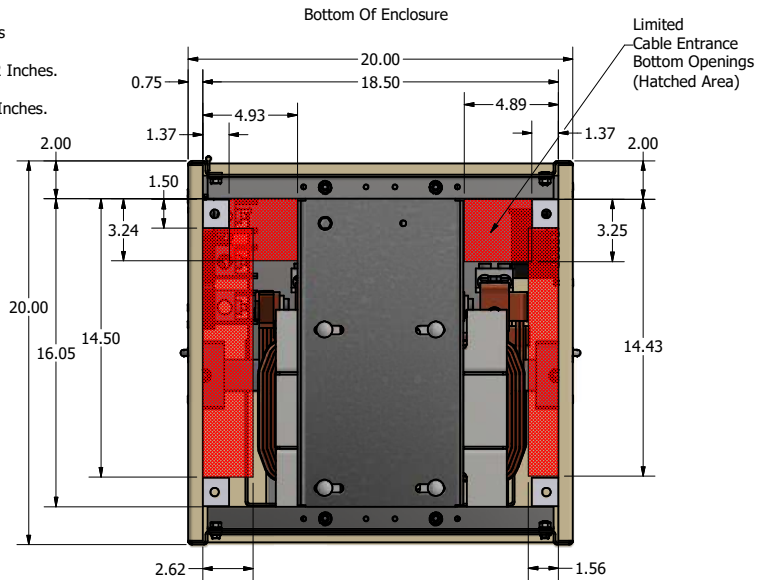
Material(s) Shall be RoHS Compliant

W132N10611 Grant Drive
Germanstown, WI 53022
© 2021 TCI, LLC
An Official Motion Company
HGP0250AW----, HarmonicGuard Passive
HGP, 250HP, 480/3/60, Open and Type 1
DWN BY: DSW DATE: 4/2/2014 105491DG
SCALE: 1/8 DRAWN: CS



Limited Cable Entrance Bottom Openings (Hatched Area)

250HP = 302 Amps
 Bend Radius
 2 x 350kcmil, Is 12 Inches.
 2 x 3/0AWG, Is 7 Inches.



Customer Is Responsible For Installation to Meet All National And Local Electrical Codes.

Material(s) Shall be RoHS Compliant

THE INFORMATION AND DESIGNS CONTAINED IN THIS DRAWING ARE CONFIDENTIAL AND THE PROPRIETARY PROPERTY OF ALLIED MOTION TECHNOLOGIES INC. AND ITS SUBSIDIARIES. NEITHER THIS DESIGN NOR ANY INFORMATION CONTAINED IN THIS DRAWING MAY BE REPRODUCED OR DISCLOSED TO OTHERS WITHOUT THE EXPRESS WRITTEN CONSENT OF ALLIED MOTION TECHNOLOGIES INC. AND ITS SUBSIDIARIES.

NO	REVISION	DATE	BY
5471	Drawing Updates, Wire Entry Details		

TOLERANCES (EXCEPT AS NOTED)
 DECIMAL
 .XX ± .25
 .XXX ± .10
 FRACTIONAL
 ± 1/16
 ANGULAR
 ± 1°

TCL W132N10611 Grant Drive
 Germantown, WI 53022
 © 2021 TCL, LLC
 An Official Motion Company
 HGP, 250HP, 480/3/60, Type 1
 Bottom Entry Detail
 DWN BY: BSW DATE: 12/14/2024 105491DG
 SCALE: 1/5 DRAWN: CSE SHEET 2 OF 2