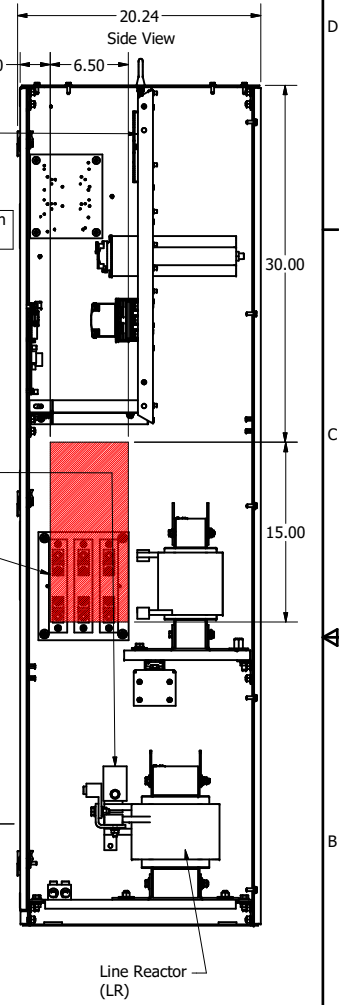
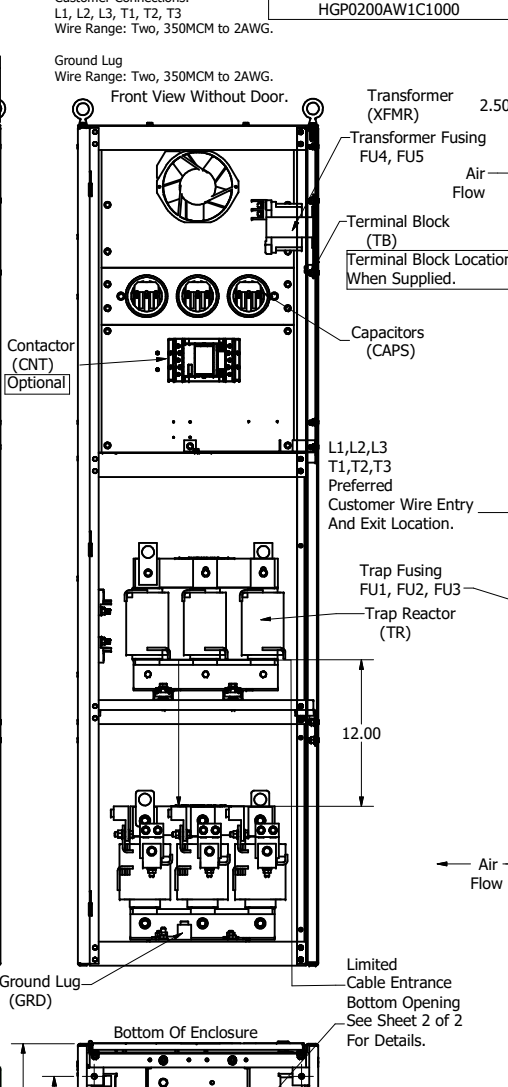
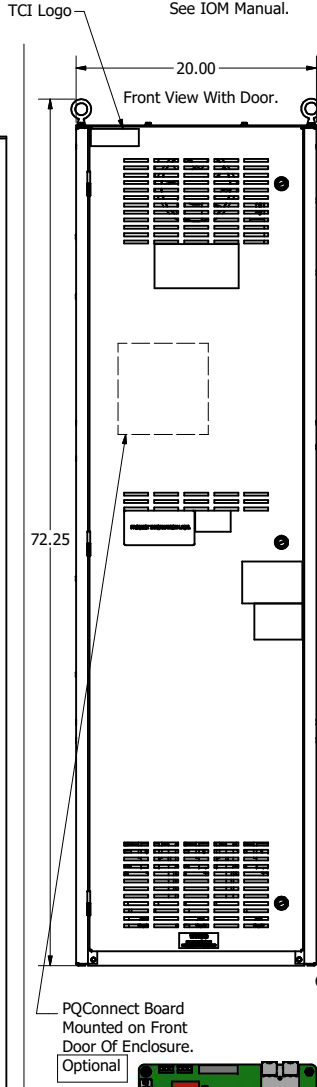
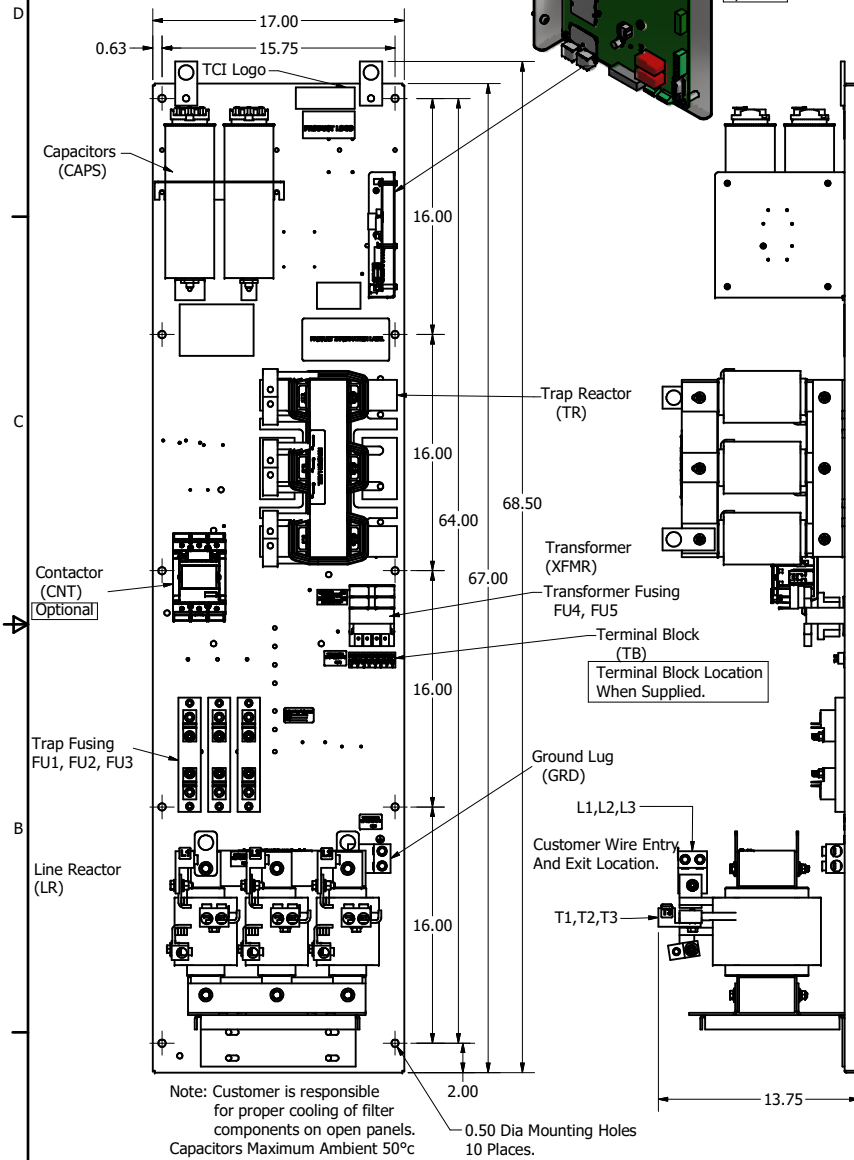


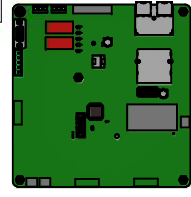
HGP Open Part Number	Schematic Drawing #	Approx Weight (LBS)
HGP0200AW0S0000	28697-S	345
HGP0200AW0C0000	28697	350
HGP0200AW0S1000	29597-PQ1	347
HGP0200AW0C1000	29597-PQ	352

HGP Part Number	HorsePower (HP)	kVar	Harmonic	Voltage (V)	Maximum Amps (A)	Hz.	Phase
HGP0200AW----	200	60	5th	480	240	60	3

HGP Enclosed Type 1 Part Number	Schematic Drawing #	Approx Weight (LBS)
HGP0200AW1S0000	29597-1S	496
HGP0200AW1C0000	28697-4	500
HGP0200AW1S1000	29597-PQ1	497
HGP0200AW1C1000	29597-PQ	501



Components	HGP0200AW----			
	0S0000/1S0000	0C0000/1C0000	0S1000/1S1000	0C1000/1C1000
Line Reactor (LR)	X	X	X	X
Trap Reactor (TR)	X	X	X	X
Capacitor (Cap)	X	X	X	X
Trap Fusing, FU1, FU2, FU3	X	X	X	X
Contactor (CNT)		X	X	X
Transformer (XFMR)	X (Type 1)	X	X	X
XFMR Fusing, FU4, FU5	X (Type 1)	X	X	X
PQConnect Board			X	X



200HP = 240 Amps Bend Radius
2 x 350kcmil, 1s 12 Inches.
1 x 350kcmil, 1s 12 Inches.
2 x 1/ØAWG, 1s 5 Inches.

Customer Is Responsible For Installation to Meet All National And Local Electrical Codes.

Material(s) Shall be RoHS Compliant

THE INFORMATION AND DESIGN CONTAINED IN THIS DRAWING ARE CONFIDENTIAL AND THE PROPRIETARY PROPERTY OF ALLIED MOTION TECHNOLOGIES INC. AND ITS SUBSIDIARIES. NEITHER THIS DESIGN NOR ANY INFORMATION CONTAINED IN THIS DRAWING MAY BE REPRODUCED OR DISCLOSED TO OTHERS WITHOUT THE EXPRESS WRITTEN CONSENT OF ALLIED MOTION TECHNOLOGIES INC. AND ITS SUBSIDIARIES.

NO	REVISION	DATE	BY	SCALE	ANGULAR	TOLERANCES (EXCEPT AS NOTED)
I	6039 Type 1 Standard Schematic Update	9/8/22	JTL		DECIMAL	.XX ± .25 .XXX ± .10
II	5636, GE to ABB CNT CHG	1/13/2022	DSW		FRACTIONAL	1/16
G	5471, Drawing Updates, Wire Entry Details	1/12/2021	DSW		ANGULAR	± 1°

W182N10611 (Rev 13) 56
Germany, WI 53022
© 2022 TCI, LLC

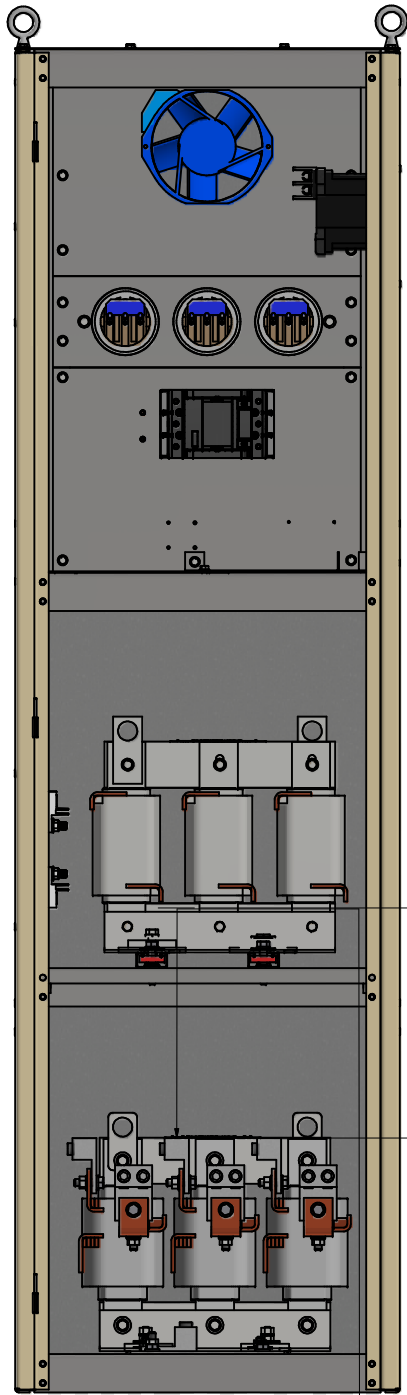
TCI
An Official Motion Control Company

HGP0200AW----, HarmonicGuard Passive
HGP, 200HP, 480/3/60, Open and Type 1

DATE: 4/2/2014
DRAWN BY: DSW
SCALE: 1/6
REVISED BY: JTL
DATE: 9/8/22

105490DG

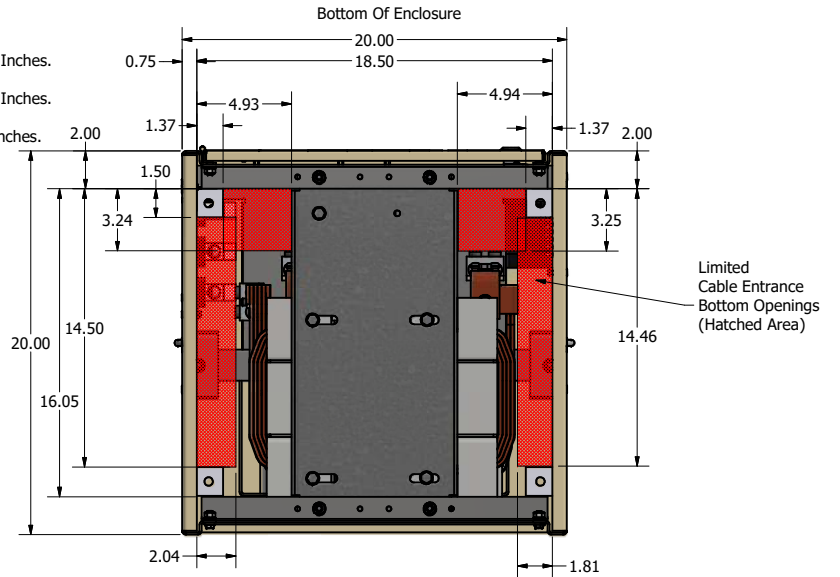
SHT 1 OF 2



200HP = 240 Amps
 Bend Radius
 2 x 350kcmil, Is 12 Inches.
 1 x 350kcmil, Is 12 Inches.
 2 x 1/ØAWG, Is 5 Inches.

12.00

Limited Cable Entrance Bottom Openings (Hatched Area)




Customer Is Responsible For Installation to Meet All National And Local Electrical Codes.

Material(s) Shall be RoHS Compliant

THE INFORMATION AND DESIGNS CONTAINED IN THIS DRAWING ARE CONFIDENTIAL AND THE PROPRIETARY PROPERTY OF ALLIED MOTION TECHNOLOGIES INC. AND ITS SUBSIDIARIES. NEITHER THIS DESIGN NOR ANY INFORMATION CONTAINED IN THIS DRAWING MAY BE REPRODUCED OR DISCLOSED TO OTHERS WITHOUT THE EXPRESS WRITTEN CONSENT OF ALLIED MOTION TECHNOLOGIES INC. AND ITS SUBSIDIARIES.

NO	REVISION	DATE	BY

TOLERANCES (EXCEPT AS NOTED)
DECIMAL
.XX ± .25
.XXX ± .10
FRACTIONAL
± 1/16
ANGULAR
± 1°


 W132N10611 (Rev 12/16)
 Germantown, WI 53022
 © 2022 TCI, LLC
 An Allied Motion Company
 HGP, 200HP, 480/3/60, Type 1
 Bottom Entry Detail
 105490DG
 DATE: 12/14/2024
 DESIGNED BY: DSW
 SCALE: 1/5
 DRAWN BY: DSW
 FILE: 105490DG
 SHEET: 2 OF 2