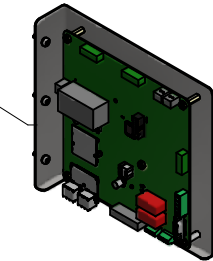
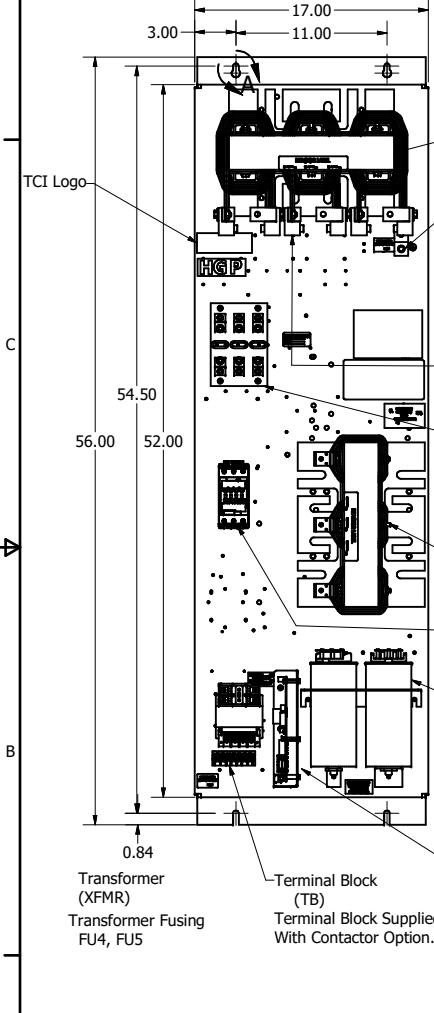
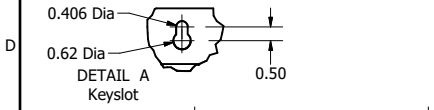


HGP Open Part Number	Schematic Drawing #	Approx Weight (LBS)
HGP0150AW0S0000	28697-1S	258
HGP0150AW0C0000	28697	265
HGP0150AW0S1000	29597-PQ1	260
HGP0150AW0C1000	29597-PQ	267

HGP Part Number	HorsePower (HP)	kVar	Harmonic	Voltage (V)	Maximum Amps (A)	Hz.	Phase
HGP0150AW----	150	45	5th	480	180	60	3

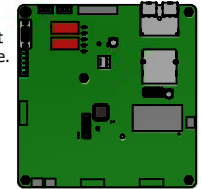
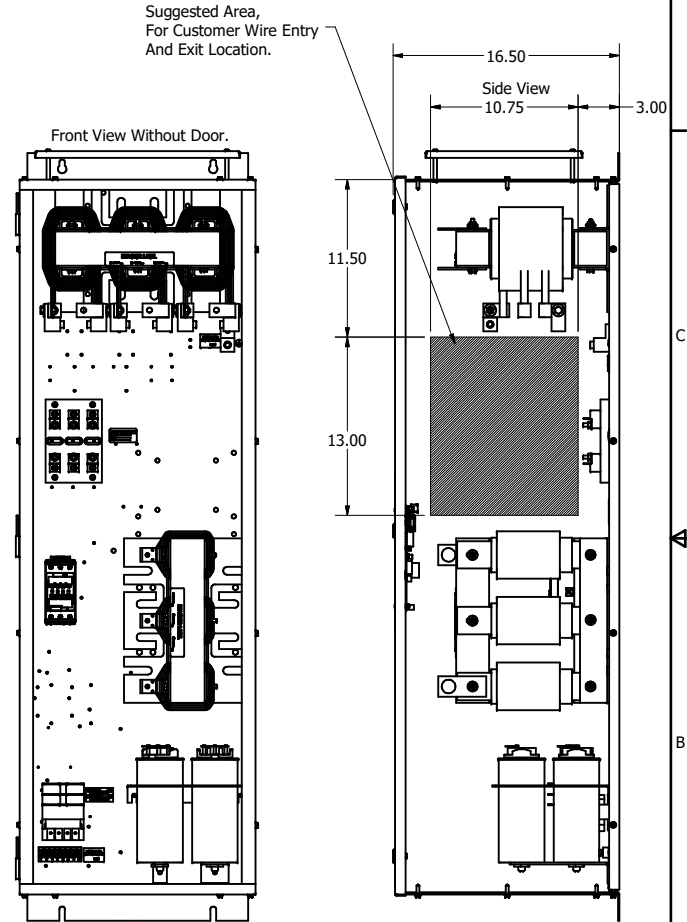
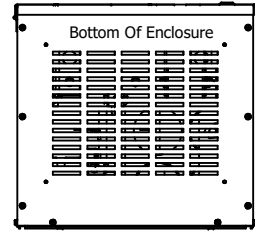
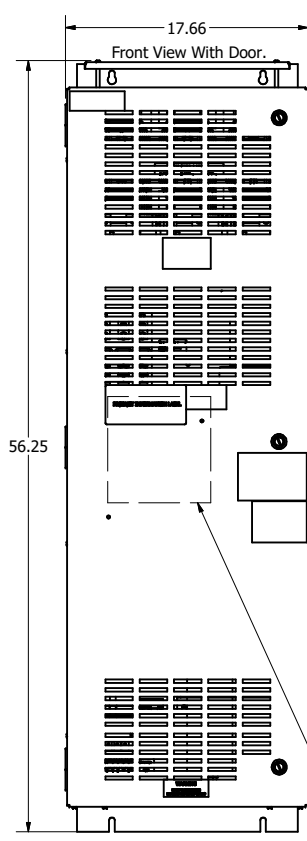
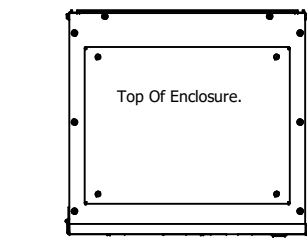
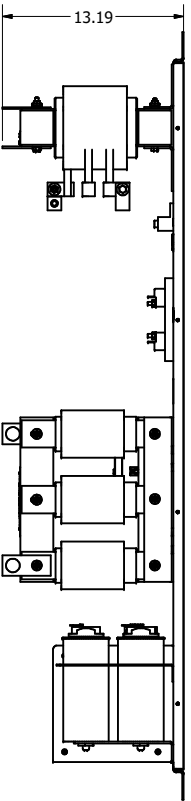
HGP Eclosed Type 1 Part Number	Schematic Drawing #	Approx Weight (LBS)
HGP0150AW1S0000	28697-S	353
HGP0150AW1C0000	28697	360
HGP0150AW1S1000	28697-PQ1	354
HGP0150AW1C1000	29597-PQ	361



Note: For Torque Information See IOM Manual.

Customer Connections.
L1, L2, L3, T1, T2, T3
Wire Range: 250MCM to 6AWG.

Ground Lug
Wire Range: 250MCM to 6AWG.



Note: Customer is responsible for proper cooling of filter components on open panels.
Capacitors Maximum Ambient 50°C

Components	HGP0150AW----			
	0S0000/1S0000	0C0000/1C0000	0S1000/1S1000	0C1000/1C1000
Line Reactor (LR)	X	X	X	X
Trap Reactor (TR)	X	X	X	X
Capacitor (Cap)	X	X	X	X
Trap Fusing, FU1, FU2, FU3	X	X	X	X
Contactor (CNT)		X		X
Transformer (XFMR)		X	X	X
XFMR Fusing, FU4, FU5		X	X	X
PQConnect Board			X	X

THE INFORMATION AND DESIGNS CONTAINED IN THIS DRAWING ARE CONFIDENTIAL AND THE PROPRIETARY PROPERTY OF ALLIED MOTION TECHNOLOGIES INC. AND ITS SUBSIDIARIES. NEITHER THIS DESIGN NOR ANY INFORMATION CONTAINED IN THIS DRAWING MAY BE REPRODUCED OR DISCLOSED TO OTHERS WITHOUT THE EXPRESS WRITTEN CONSENT OF ALLIED MOTION TECHNOLOGIES INC. AND ITS SUBSIDIARIES.

Customer Is Responsible For Installation to Meet All National And Local Electrical Codes.

ID	REVISION	DATE	BY
5636, GE to ABB CNT CHG		1/13/2021	DSW

TOLERANCES (EXCEPT AS NOTED)
DECIMAL
.XX ± .25
.XXX ± .10
FRACTIONAL
± 1/16
ANGULAR
± 1°

Material(s) Shall be RoHS Compliant

W132N10611 (Rev 13) Feb
Germanstown, WI 53022
© 2022 TCI, LLC

Harmonic Guard Passive
HGP, 150HP, 480/3/60, Open and Type 1

OWN BY: DSW DATE: 10/31/13
SCALE: 1/6 DRAWN: TCI
105489DG
SHT 1 OF 1