

HGP Part Number	HorsePower (HP)	kVar	Harmonic	Voltage (V)	Hz.	Phase
HGP0100CW3----	100	30	5th	600	60	3
HGP0125CW3----	125	40	5th	600	60	3

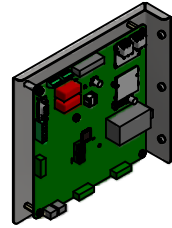
HGP Part Number	Schematic Drawing #	Approx Weight (LBS)
HGP0100CW3S0000	29474-4	269
HGP0100CW3C0000	29474-5	271
HGP0100CW3C000H	29475-6	275
HGP0100CW3C1000	29474-PQ1	271
HGP0100CW3C1000	29474-PQ	273
HGP0100CW3C100H	29474-PQH	277

HGP Part Number	Schematic Drawing #	Approx Weight (LBS)
HGP0125CW3S0000	29474-4	289
HGP0125CW3C0000	29474-5	291
HGP0125CW3C000H	29474-6	295
HGP0125CW3C1000	29474-PQ1	291
HGP0125CW3C1000	29474-PQ	293
HGP0125CW3C100H	29474-PQH	297

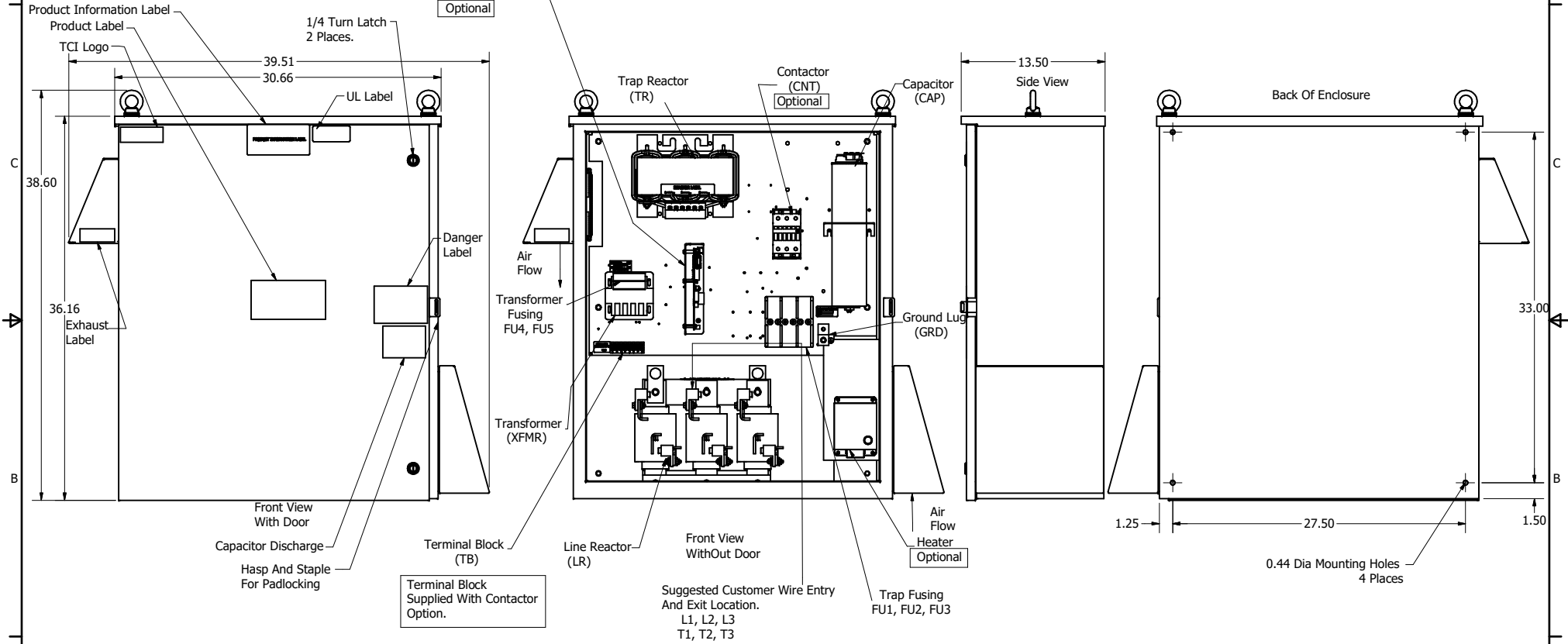
Note: For Torque Information See IOM Manual

Customer Connections.
L1, L2, L3, T1, T2, T3
Wire Range: 2/0 AWG to 14AWG.

Ground Lug
Wire Range: 2/0 to 14 AWG.



PQConnect Board
Optional



Components	HGP0100CW3----- HGP0125CW3----					
	S0000	C0000	C000H	S1000	C1000	C100H
Line Reactor (LR)	x	x	x	x	x	x
Trap Reactor (TR)	x	x	x	x	x	x
Capacitor (Cap)	x	x	x	x	x	x
Trap Fusing, FU1, FU2, FU3	x	x	x	x	x	x
Contactor (CNT)		x	x		x	x
Transformer (XFMR)	x	x	x	x	x	x
XFMR Fusing, FU4, FU5	x	x	x	x	x	x
Heater			x			x
PQConnect Board				x	x	x

NOTE: USE ONLY HUBS OR FITTINGS THAT COMPLY WITH UL514B FOR TYPE 3R ENCLOSURES

Customer Is Responsible For Installation to Meet All National And Local Electrical Codes.

Material(s) Shall be RoHS Compliant

TCI, LLC CLAIMS PROPRIETARY RIGHTS IN THE MATERIAL HEREIN DISCLOSED. IT IS SUPPLIED WITHOUT PREJUDICE TO ANY PATENT RIGHTS OF TCI AND MAY NOT BE REPRODUCED OR USED TO MANUFACTURE ANYTHING SHOWN THEREIN WITHOUT WRITTEN PERMISSION FROM TCI.				TOLERANCES (EXCEPT AS NOTED) DECIMAL .XX ± .25 .XXX ± .10		TCI W132 N10611 Grant Drive Germantown, WI 53022	
D \$265, Enclosure Updated 8/4/2020 DSW C Add PQConnect 8/31/18 DSW NO REVISION DATE BY				FRACTIONAL ± 1/16 ANGULAR ± 1°		HarmonicGuard Passive HGP, 100HP, 125HP, 600/3/60, Type 3R	
				DRN BY DSW DATE 2/10/15 SCALE: 1/8 DRAWING 105905DG SHEET 1 OF 1			