

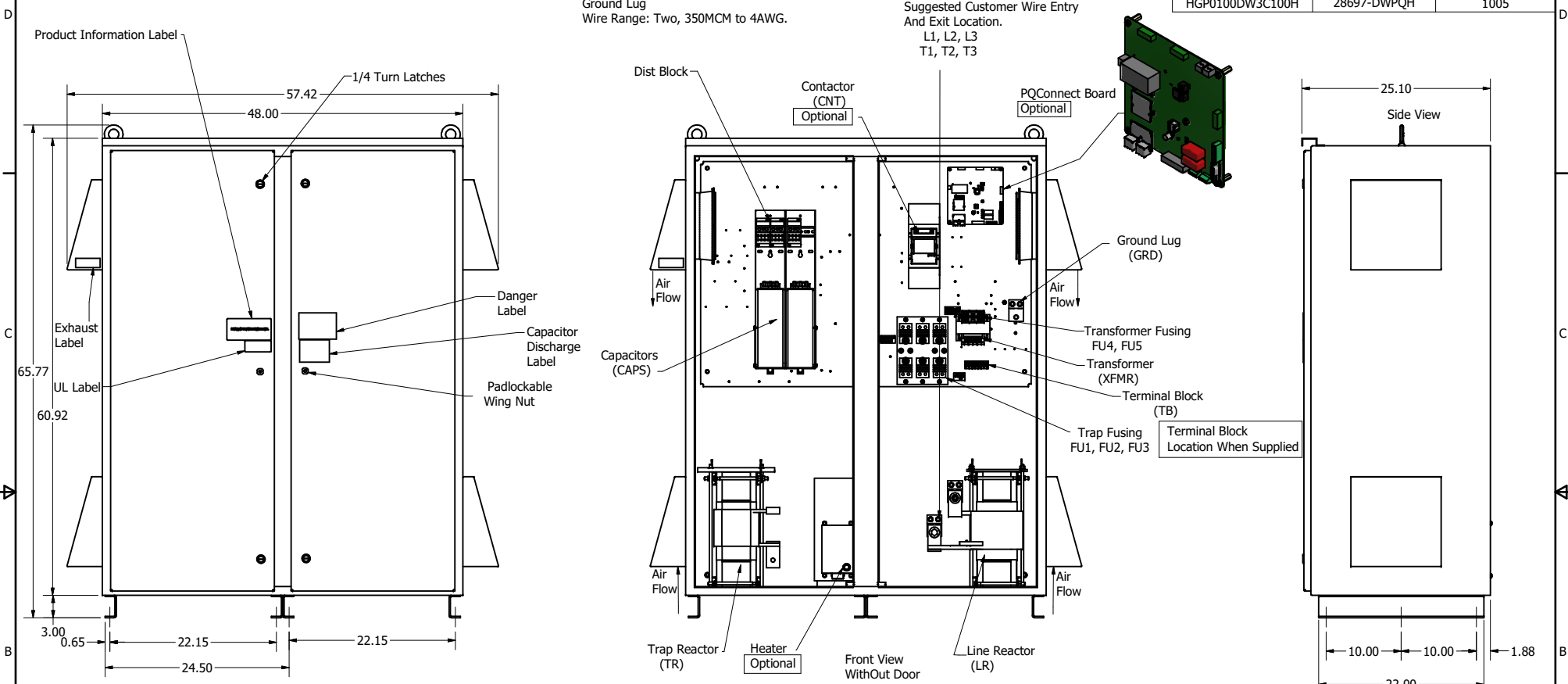
HGP Part Number	HorsePower (HP)	kVar	Harmonic	Voltage (V)	Hz.	Phase
HGP0100DW3----	100	22.5	5th	208	60	3

Note: For Torque Information See IOM Manual

Customer Connections.
L1, L2, L3, T1, T2, T3
Wire Range: Two, 350MCM to 4AWG.

Ground Lug
Wire Range: Two, 350MCM to 4AWG.

HGP Part Number	Schematic Drawing #	Approx Weight (LBS)
HGP0100DW3S0000	28697-208-2S	985
HGP0100DW3C0000	28697-208-2	995
HGP0100DW3C000H	28697-208-2H	1000
HGP0100DW3S1000	28697-DWPQ1	988
HGP0100DW3C1000	28697-DWPQ	998
HGP0100DW3C100H	28697-DWPQH	1005



Components	HGP0100DW3----					
	S0000	C0000	C000H	S1000	C1000	C100H
Trap Reactor (TR)	x	x	x	x	x	x
Capacitor (Cap)	x	x	x	x	x	x
Trap Fusing, FU1, FU2, FU3	x	x	x	x	x	x
Contactor (CNT)		x	x		x	x
Transformer (XFMR)	x	x	x	x	x	x
XFMR Fusing, FU4, FU5	x	x	x	x	x	x
Fuse Monitor				x		x
Heater				x		x
PQConnect Board					x	x

Customer Is Responsible For Installation to Meet All National And Local Electrical Codes.

NOTE: USE ONLY HUBS OR FITTINGS THAT COMPLY WITH UL514B FOR TYPE 3R ENCLOSURES

Material(s) Shall be RoHS Compliant

THE INFORMATION AND DESIGNS CONTAINED IN THIS DRAWING ARE CONFIDENTIAL AND THE PROPRIETARY PROPERTY OF ALLIED MOTION TECHNOLOGIES INC. AND ITS SUBSIDIARIES. NEITHER THIS DESIGN NOR ANY INFORMATION CONTAINED IN THIS DRAWING MAY BE REPRODUCED OR DISCLOSED TO OTHERS WITHOUT THE EXPRESS WRITTEN CONSENT OF ALLIED MOTION TECHNOLOGIES INC. AND ITS SUBSIDIARIES.						TOLERANCES (EXCEPT AS NOTED)		W182N10611 (Rev. 11/16) Germantown, WI 53022 © 2023 TCI, LLC	
						DECIMAL		.XX ± .25 .XXX ± .10	
						FRACTIONAL		± 1/32 ANGULAR ± 1°	
As Designed	12/01/20	JRN						DESIGN BY	DATE 12/01/20
NO	REVISION	DATE	BY					108788DG	SCALE 1/8

SHEET 1 OF 1