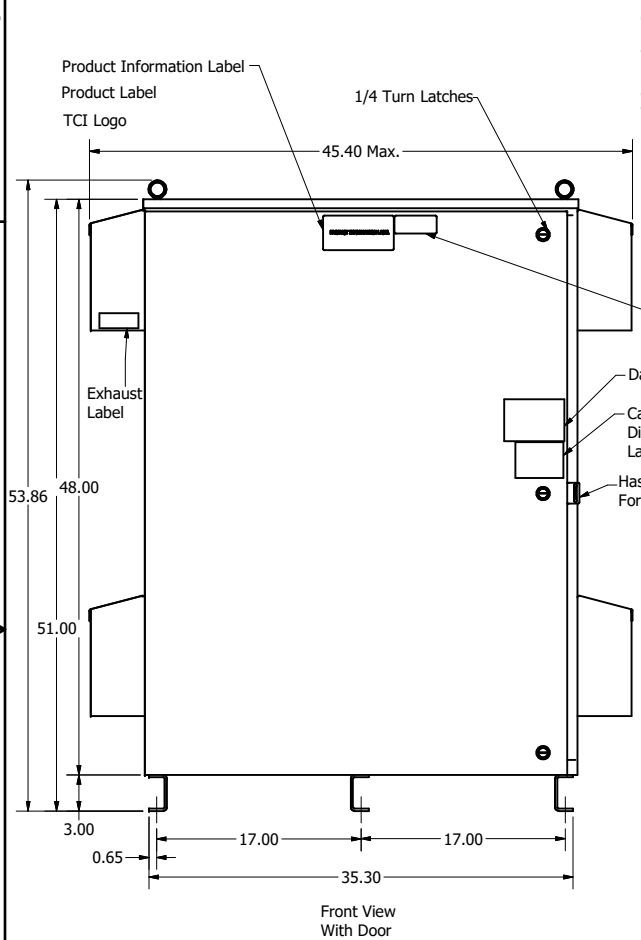


HGP Part Number	HorsePower (HP)	kVar	Harmonic	Maximum Amps (A)	Voltage (V)	Hz.	Phase
HGP0100BW3----	100	55.6	5th	248	240	60	3

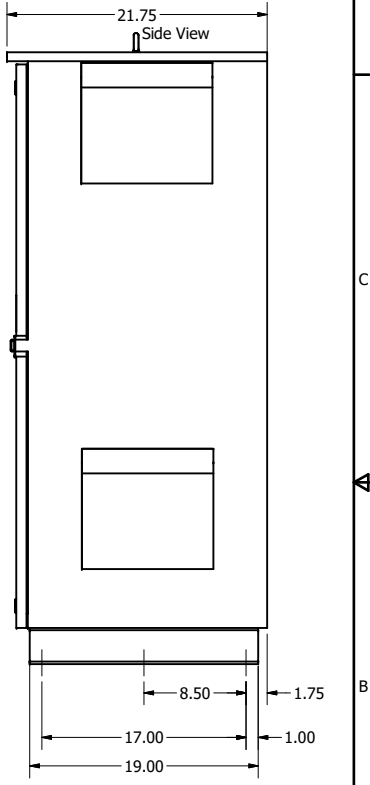
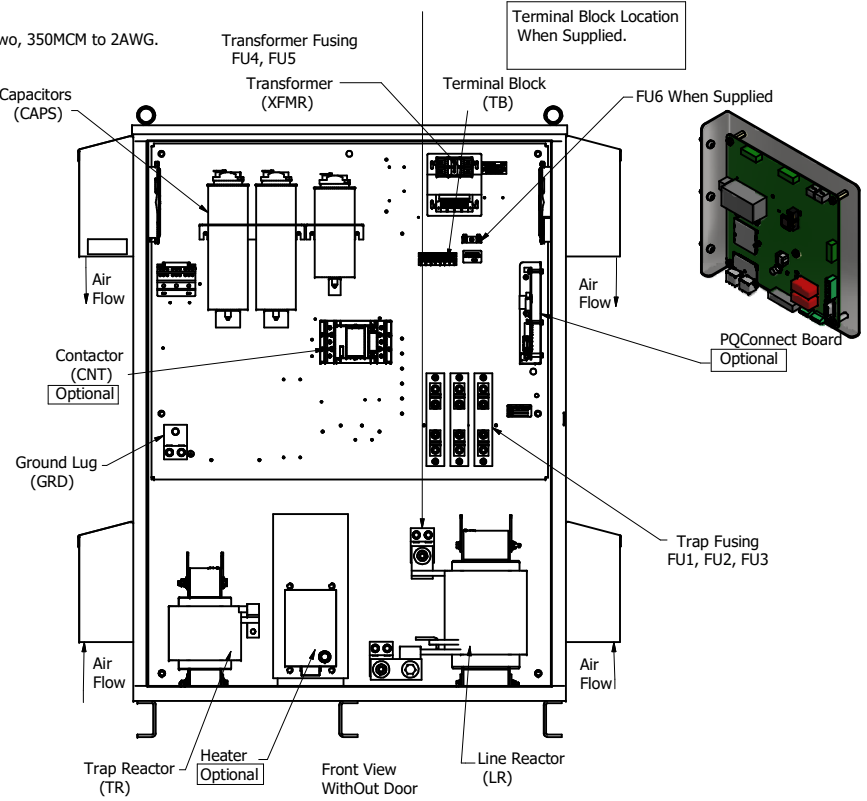
HGP Part Number	Schematic Drawing #	Approx Weight (LBS)
HGP0100BW3S0000	30209-1S	615
HGP0100BW3C0000	30209-1	620
HGP0100BW3C000H	30209-1H	625
HGP0100BW3C1000	30209-PQ	623
HGP0100BW3C100H	30209-PQH	628



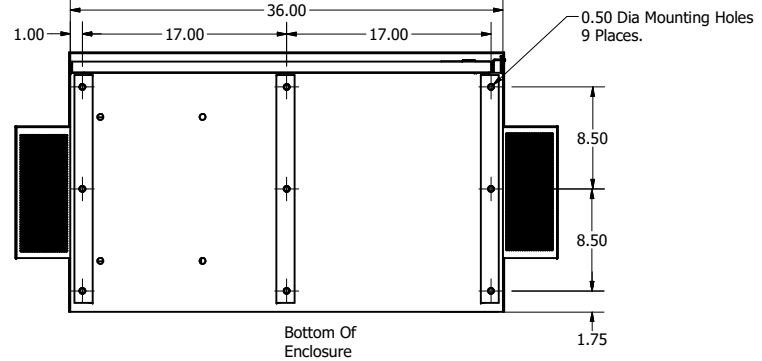
Note: For Torque Information See IOM Manual  
Customer Connections. L1, L2, L3, T1, T2, T3  
Wire Range: Two, 350MCM to 2AWG.

Suggested Customer Wire Entry And Exit Location.  
L1, L2, L3  
T1, T2, T3

Ground Lug Wire Range: Two, 350MCM to 2AWG.



HGP0300AW3----					
Components	S0000	C0000	C000H	C1000	C100H
Line Reactor (LR)	x	x	x	x	x
Trap Reactor (TR)	x	x	x	x	x
Capacitor (Cap)	x	x	x	x	x
Trap Fusing, FU1, FU2, FU3	x	x	x	x	x
Contactor (CNT)		x	x	x	x
Transformer (XFMR)	x	x	x	x	x
XFMR Fusing, FU4, FU5	x	x	x	x	x
Heater			x		x
PQConnect Board				x	x



Customer Is Responsible For Installation to Meet All National And Local Electrical Codes.

NOTE: USE ONLY HUBS OR FITTINGS THAT COMPLY WITH UL514B FOR TYPE 3R ENCLOSURES

Material(s) Shall be RoHS Compliant

THE INFORMATION AND DESIGNS CONTAINED IN THIS DRAWING ARE CONFIDENTIAL AND THE PROPRIETARY PROPERTY OF ALLIED MOTION TECHNOLOGIES INC. AND ITS SUBSIDIARIES. NEITHER THIS DESIGN NOR ANY INFORMATION CONTAINED IN THIS DRAWING MAY BE REPRODUCED OR DISCLOSED TO OTHERS WITHOUT THE EXPRESS WRITTEN CONSENT OF ALLIED MOTION TECHNOLOGIES INC. AND ITS SUBSIDIARIES.

NO	REVISION	DATE	BY
A	As Designed	7/5/2023	DSW

TOLERANCES (EXCEPT AS NOTED)
DECIMAL
.XX ± .25
.XXX ± .10
FRACTIONAL
± 1/16
ANGULAR
± 1°

W182N10611 (Rev. 13 Feb 2022)  
Germantown, WI 53022  
© 2023 TCI, LLC

**TCI**  
An Allied Motion Company

Harmonic Guard Passive  
HGP, 100HP, 240/3/60, Type 3R

DRN BY: DSW DATE: 7/5/2023 109465DG  
SCALE: 1/8 DRAWN BY: CJC SHEET 1 OF 1