

HGP Open Part Number	Schematic Drawing #	Approx Weight (LBS)
HGP0100BW0S0000	30209-S	477
HGP0100BW0C0000	30209	487

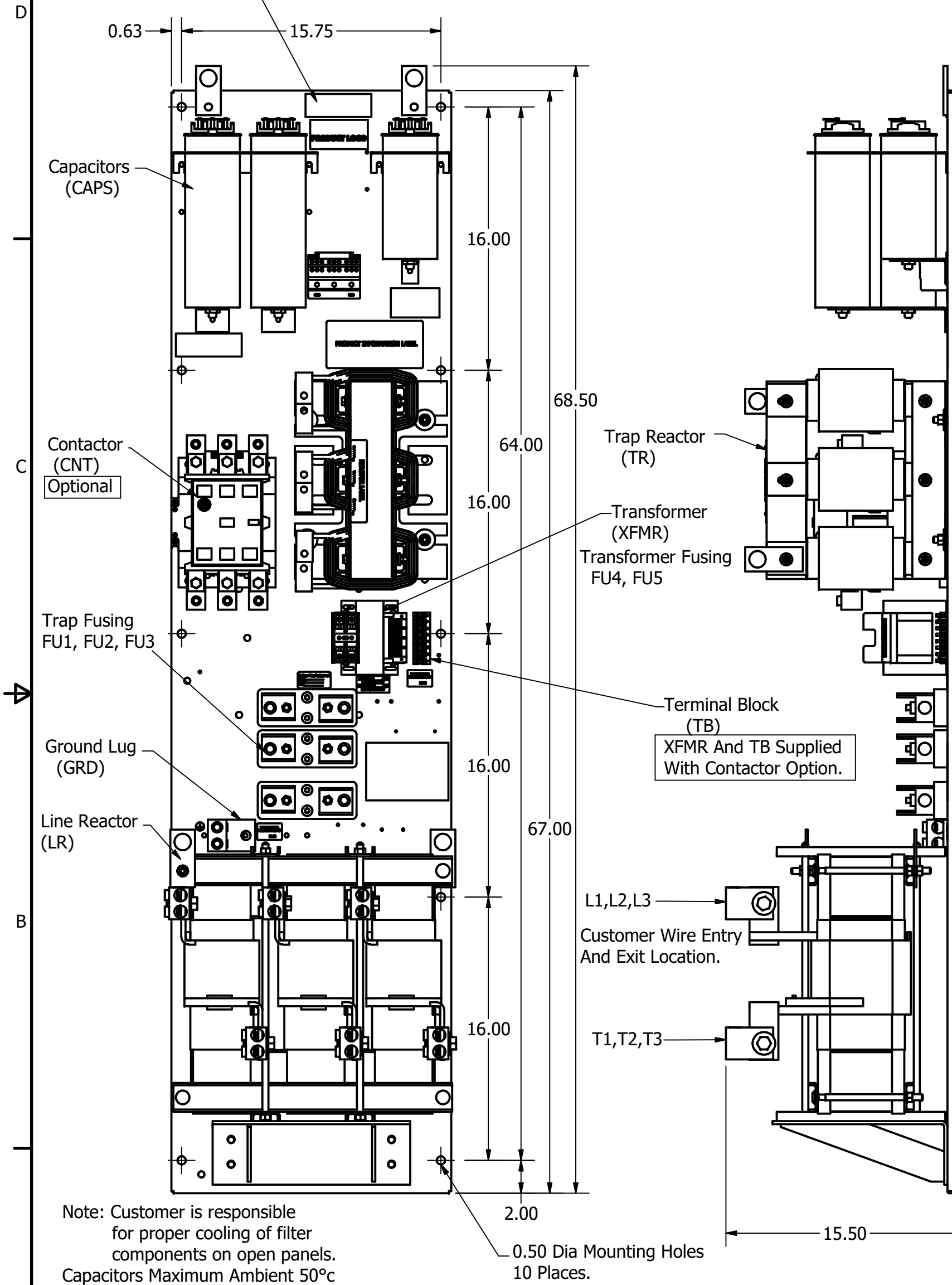
HGP Part Number	HorsePower (HP)	kVar	Harmonic	Voltage (V)	Hz.	Phase
HGP0100BW----	100	23	5th	240	60	3

HGP Eclosed Type 1 Part Number	Schematic Drawing #	Approx Weight (LBS)
HGP0100BW1S0000	30209-1S	630
HGP0100BW1C0000	30209-1	640

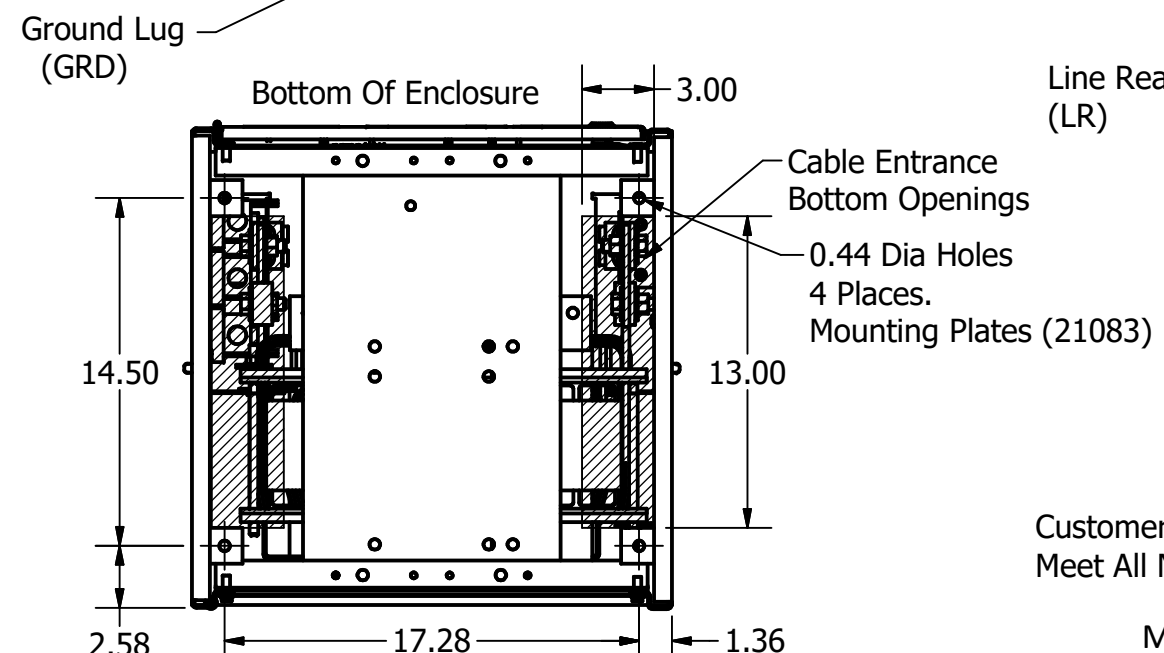
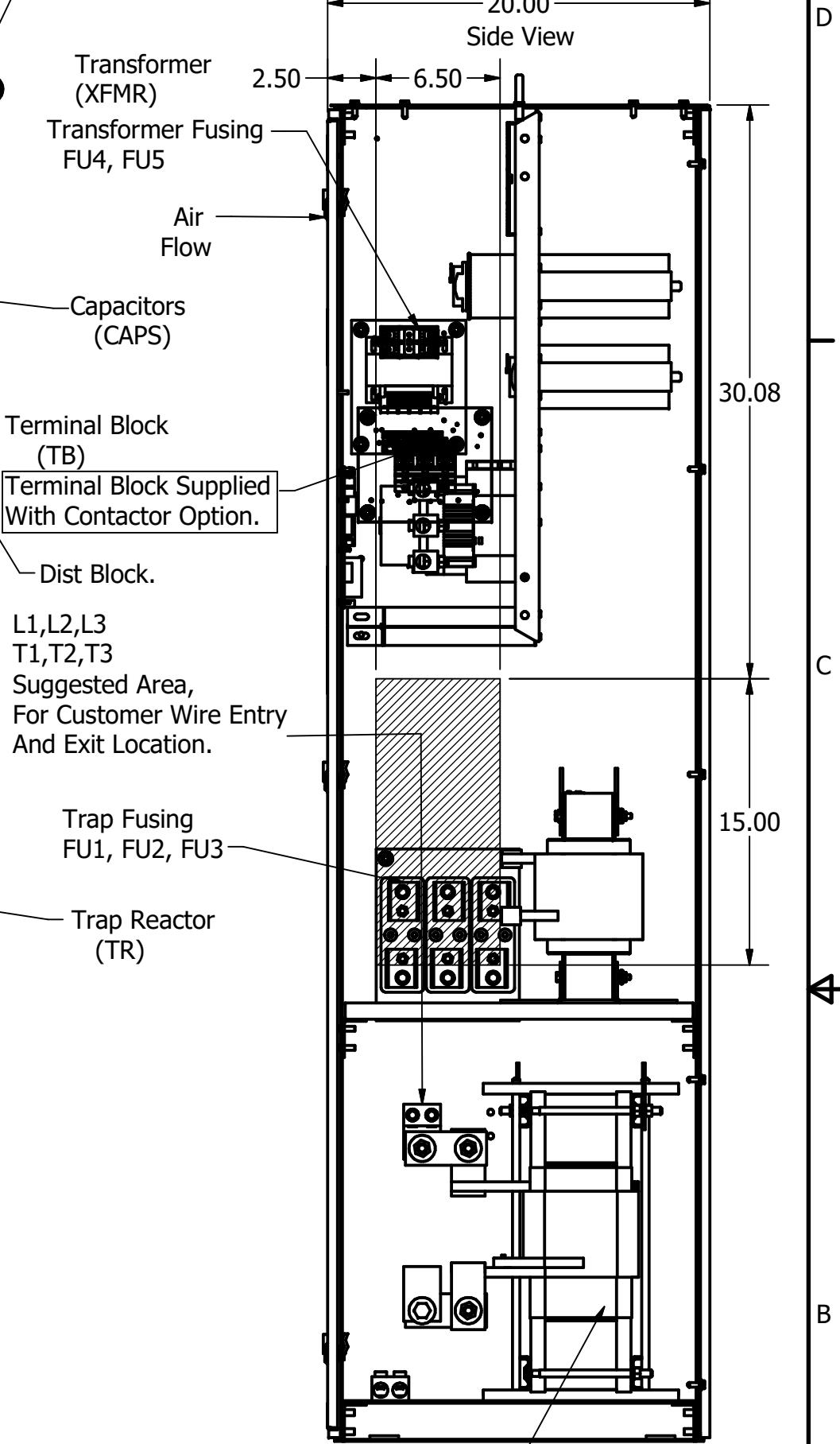
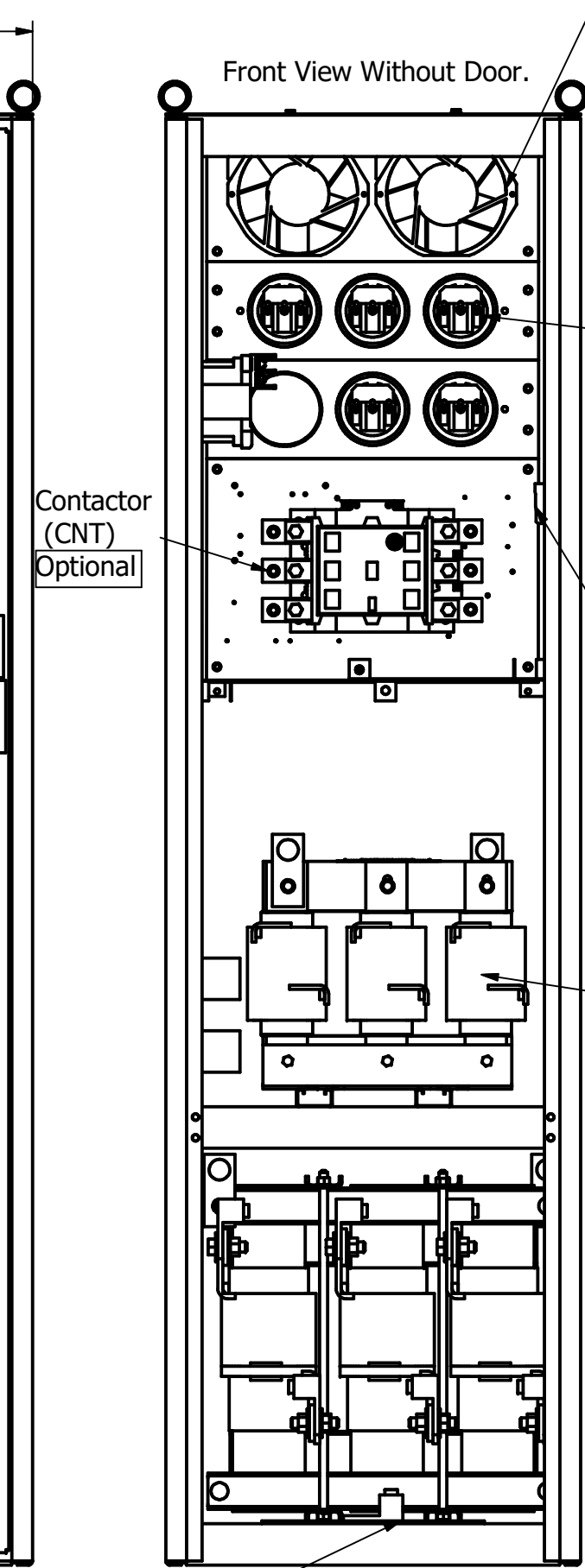
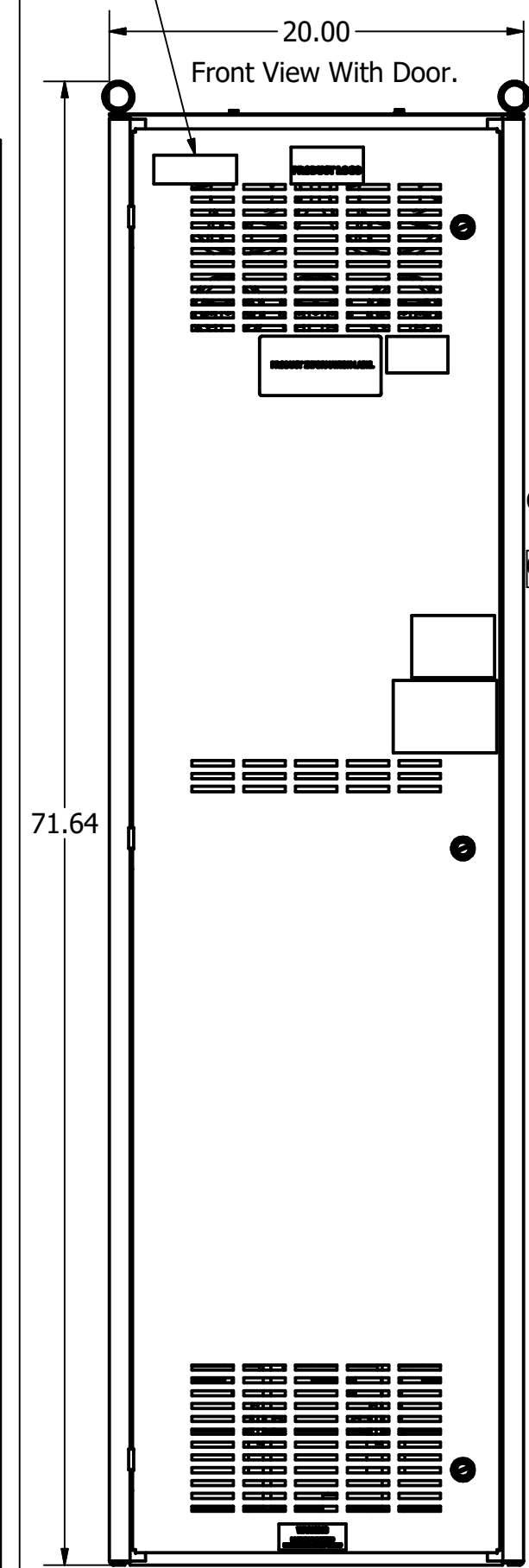
Customer Connections.
L1, L2, L3, T1, T2, T3
Wire Range: Two, 350MCM to 2AWG.

Note: For Torque Information
See IOM Manual.

Ground Lug
Wire Range: Two, 350MCM to 2AWG.



Note: Customer is responsible for proper cooling of filter components on open panels. Capacitors Maximum Ambient 50°C



Customer Is Responsible For Installation to Meet All National And Local Electrical Codes.

Material(s) Shall be RoHS Compliant

Components	HGP0100BW----			
	0S0000	0C0000	0S0000	1C0000
Line Reactor (LR)	X	X	X	X
Trap Reactor (TR)	X	X	X	X
Capacitor (Cap)	X	X	X	X
Trap Fusing, FU1, FU2, FU3	X	X	X	X
Contactor (CNT)		X		X
Transformer (XFMR)		X	X	X
XFMR Fusing, FU4, FU5		X	X	X

TCI, LLC CLAIMS PROPRIETARY RIGHTS IN THE MATERIAL HEREIN DISCLOSED. IT IS SUPPLIED WITHOUT PREJUDICE TO ANY PATENT RIGHTS OF TCI AND MAY NOT BE REPRODUCED OR USED TO MANUFACTURE ANYTHING SHOWN THEREIN WITHOUT WRITTEN PERMISSION FROM TCI.

TOLERANCES (EXCEPT AS NOTED)
DECIMAL
.XX ± .25
.XXX ± .10
FRACTIONAL
± 1/16
ANGULAR
± 1°

TCI W132 N10611 Grant Drive
Germantown, WI 53022

HarmonicGuard Passive
HGP, 100HP, 240/3/60, Open and Type 1

DRN BY JRN DATE 10/05/18 107905DG
SCALE 1/8 APRVD: SIZE C SHT 1 OF 1

NO	REVISION	DATE	BY
A	As Designed	10/05/18	JRN