

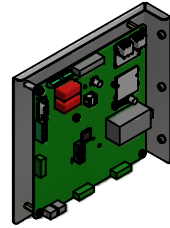
HGP Part Number	Schematic Drawing #	Approx Weight (LBS)
HGP0100AW3S0000	28697-4S	269
HGP0100AW3C0000	28697-4	271
HGP0100AW3C000H	28697-4H	275
HGP0100AW3S1000	29597-PQ1	272
HGP0100AW3C1000	29597-PQ	274
HGP0100AW3C100H	29597-PQH	278

HGP Part Number	HorsePower (HP)	kVar	Maximum Amps (A)	Harmonic	Voltage (V)	Hz.	Phase
HGP0100AW3----	100	30	124	5th	480	60	3

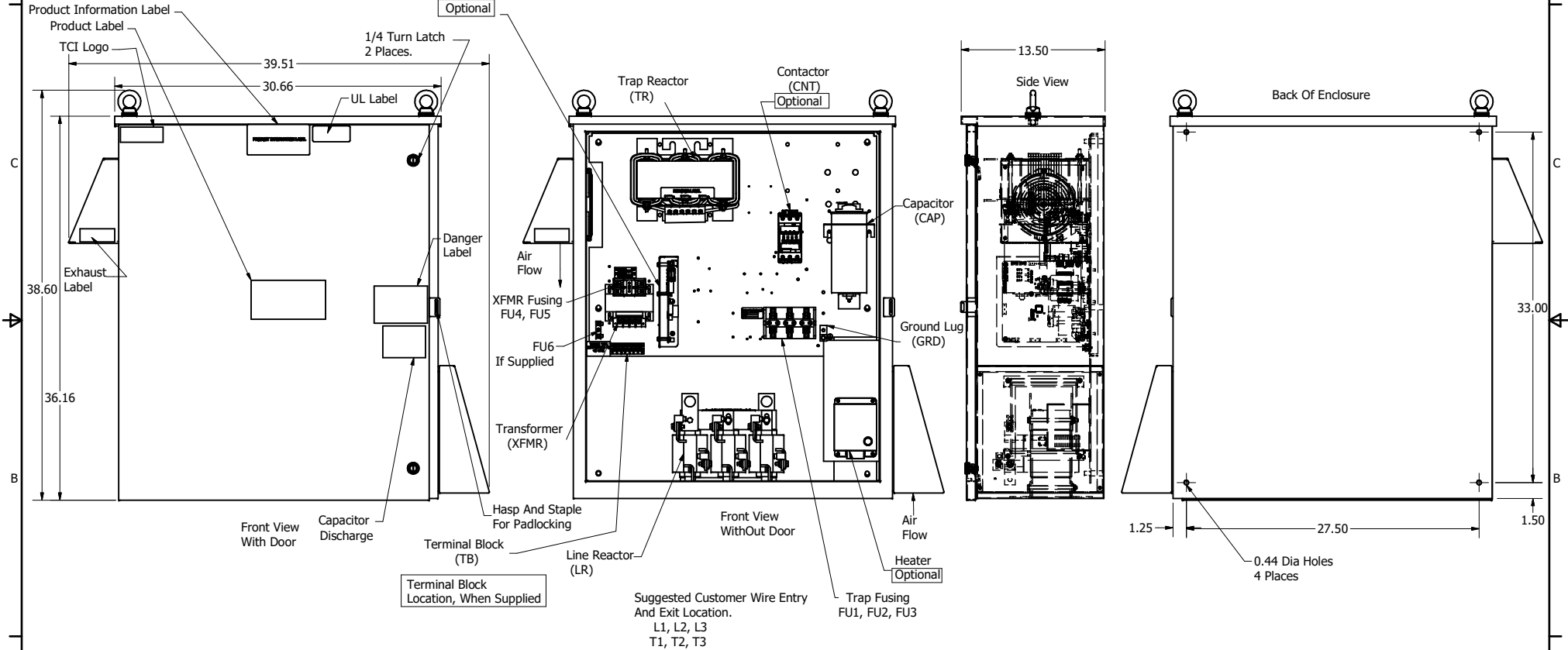
Note: For Torque Information See IOM Manual

Customer Connections.  
L1, L2, L3, T1, T2, T3  
Wire Range: 2/0 AWG to 14AWG.

Ground Lug  
Wire Range: 2/0 to 14 AWG.



PQConnect Board  
Optional



Components	HGP0100AW3----					
	S0000	C0000	C000H	S1000	C1000	C100H
Line Reactor (LR)	x	x	x	x	x	x
Trap Reactor (TR)	x	x	x	x	x	x
Capacitor (Cap)	x	x	x	x	x	x
Trap Fusing, FU1, FU2, FU3	x	x	x	x	x	x
Contactor (CNT)		x	x		x	x
Transformer (XFMR)	x	x	x	x	x	x
XFMR Fusing, FU4, FU5	x	x	x	x	x	x
XFMR FU6			x			x
Heater					x	x
PQConnect Board				x	x	x

NOTE: USE ONLY HUBS OR FITTINGS THAT COMPLY WITH UL514B FOR TYPE 3R ENCLOSURES

Customer Is Responsible For Installation to Meet All National And Local Electrical Codes.

Material(s) Shall be RoHS Compliant

THE INFORMATION AND DESIGNS CONTAINED IN THIS DRAWING ARE CONFIDENTIAL AND THE PROPRIETARY PROPERTY OF ALLIED MOTION TECHNOLOGIES INC. AND ITS SUBSIDIARIES. NEITHER THIS DESIGN NOR ANY INFORMATION CONTAINED IN THIS DRAWING MAY BE REPRODUCED OR DISCLOSED TO OTHERS WITHOUT THE EXPRESS WRITTEN CONSENT OF ALLIED MOTION TECHNOLOGIES INC. AND ITS SUBSIDIARIES.	REVISED	DATE	BY	TOLERANCES (EXCEPT AS NOTED)	<p>W132N10611 Grant Drive Germanstown, WI 53022 © 2021 TCI, LLC An Official Motion Company HarmonicGuard Passive, HGP0100AW3---- HGP, 100HP, 480/3/60, Type 3R 105561DG</p>	
	E	5636, GE to ABB CNT Change	7/14/2021	DSW		DECIMAL .XX ± .25 .XXX ± .10
	D	5261, ENCL/CONTACTOR UPDATED	5/12/2020	DSW		FRACTIONAL ± 1/16
	C	Add PQconnect	6/11/18	DSW		ANGULAR ± 1°
	NO	REVISION	DATE	BY		SCALE: 1/8