

HGP Open Part Number	Schematic Drawing #	Approx Weight (LBS)
HGP0075DW0S0000	28697-208-2S	477
HGP0075DW0C0000	28697-208	490
HGP0075DW0S1000	28697-DWPQ1	479
HGP0075DW0C1000	28697-DWPQ	492

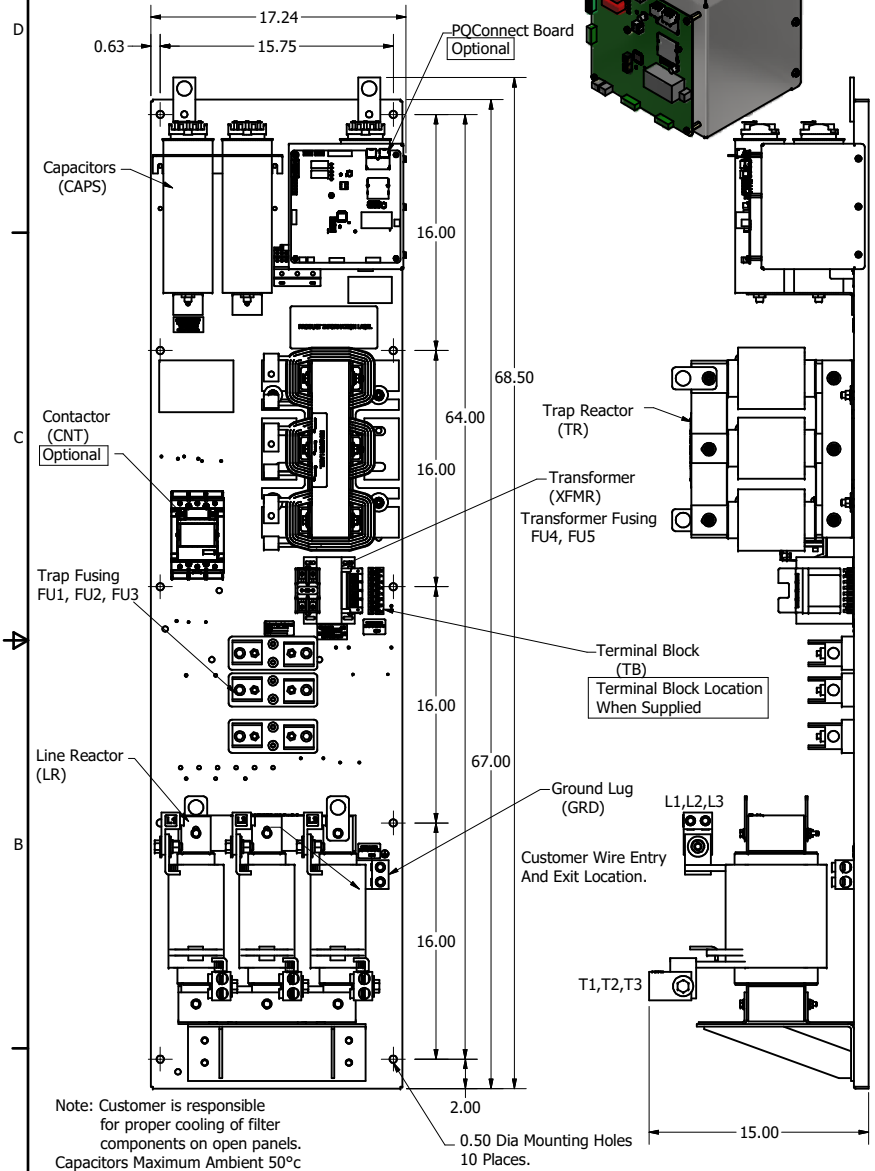
HGP Part Number	HorsePower (HP)	kVar	Harmonic	Voltage (V)	Maximum Amps (A)	Hz.	Phase
HGP0075DW----	75	17	5th	208	361	60	3

Customer Connections.  
L1, L2, L3, T1, T2, T3  
Wire Range: Two, 350MCM to 2AWG.

HGP Enclosed Part Number	Schematic Drawing #	Approx Weight (LBS)
HGP0075DW1S0000	28697-208-2S	630
HGP0075DW1C0000	28697-208	640
HGP0075DW1S1000	28697-DWPQ1	633
HGP0075DW1C1000	28697-DWPQ	643

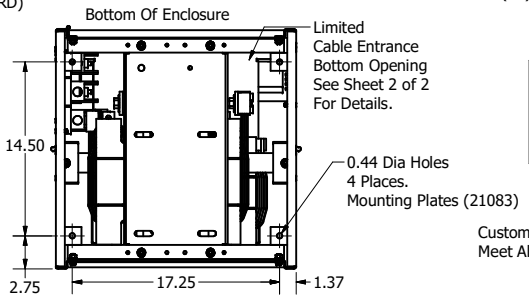
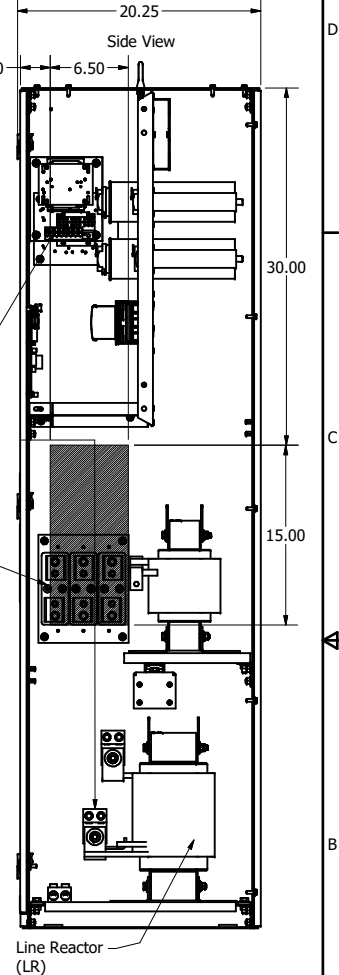
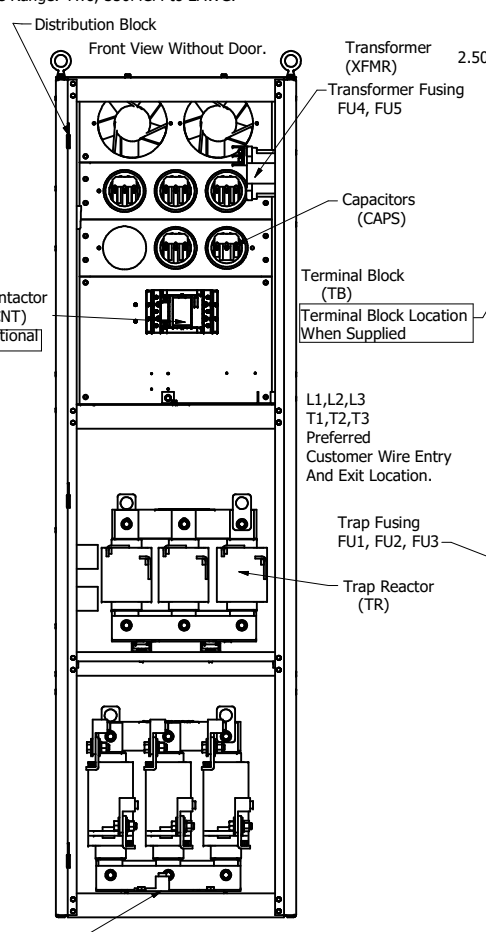
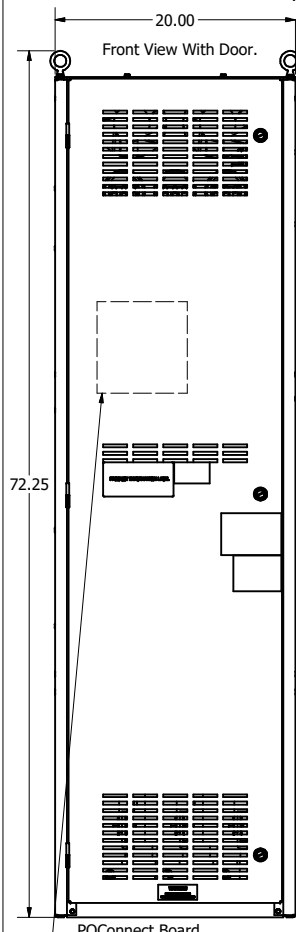
Note: For Torque Information See IOM Manual.

Ground Lug  
Wire Range: Two, 350MCM to 2AWG.



Note: Customer is responsible for proper cooling of filter components on open panels. Capacitors Maximum Ambient 50°C

0.50 Dia Mounting Holes 10 Places.



75HP = 361 Amps  
Bend Radius  
2 x 350kcmil, Is 12 Inches.  
2 x 4/0AWG, Is 7 Inches.

Customer Is Responsible For Installation to Meet All National And Local Electrical Codes.

Material(s) Shall be RoHS Compliant

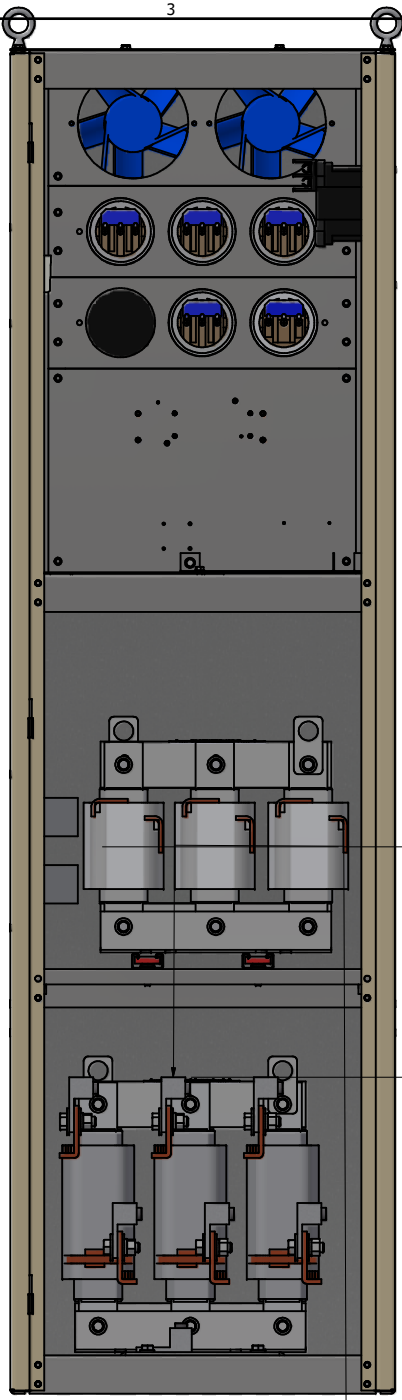
Components	HGP0075DW----			
	0S0000/1S0000	0C0000/1C0000	0S1000/1S1000	0C1000/1C1000
Line Reactor (LR)	X	X	X	X
Trap Reactor (TR)	X	X	X	X
Capacitor (Cap)	X	X	X	X
Trap Fusing, FU1, FU2, FU3	X	X	X	X
Contactor (CNT)		X		X
Transformer (XFMR)	X (Type 1)	X	X	X
XFMR Fusing, FU4, FU5	X (Type 1)	X	X	X
PQConnect Board			X	X

THE INFORMATION AND DESIGNS CONTAINED IN THIS DRAWING ARE CONFIDENTIAL AND THE PROPRIETARY PROPERTY OF ALLIED MOTION TECHNOLOGIES INC. AND ITS SUBSIDIARIES. NEITHER THIS DESIGN NOR ANY INFORMATION CONTAINED IN THIS DRAWING MAY BE REPRODUCED OR DISCLOSED TO OTHERS WITHOUT THE EXPRESS WRITTEN CONSENT OF ALLIED MOTION TECHNOLOGIES INC. AND ITS SUBSIDIARIES.

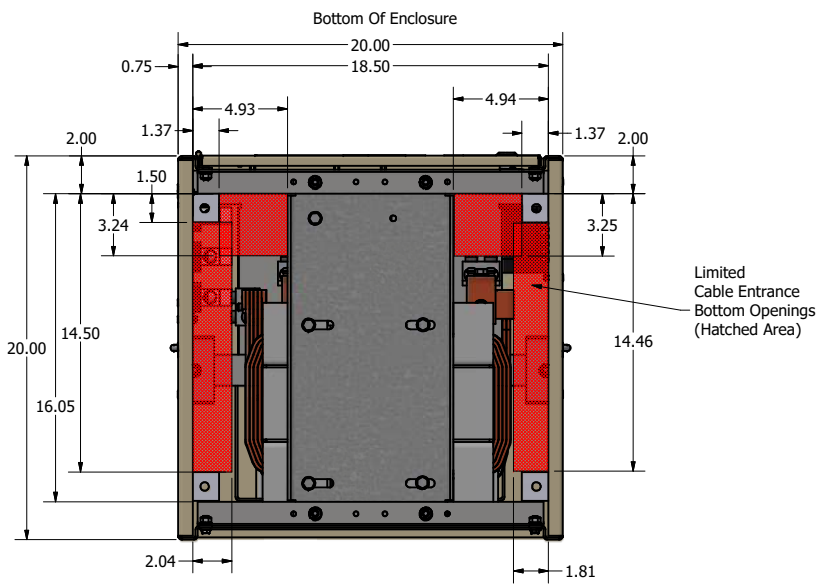
NO	REVISION	DATE	BY
A	As Designed	10/14/22	JRN

TOLERANCES (EXCEPT AS NOTED)	
DECIMAL	.XX ± .25 .XXX ± .10
FRACTIONAL	± 1/16
ANGULAR	± 1°

**TCL** W132N10611 (Rev 13 Feb 2022)  
Germantown, WI 53022  
© 2022 TCL, LLC  
An Official Motion Group Company  
Harmonic Guard Passive  
HGP, 75HP, 208/3/60, Open and Type 1  
DATE: 10/14/22  
DWG BY: JRN  
SCALE: 1/8  
DATE: 10/14/22  
REVISED BY: JRN  
SHEET: 1 OF 2




Limited Cable Entrance Bottom Openings (Hatched Area)



Customer Is Responsible For Installation to Meet All National And Local Electrical Codes.

Material(s) Shall be RoHS Compliant

THE INFORMATION AND DESIGNS CONTAINED IN THIS DRAWING ARE CONFIDENTIAL AND THE PROPRIETARY PROPERTY OF ALLIED MOTION TECHNOLOGIES INC. AND ITS SUBSIDIARIES. NEITHER THIS DESIGN NOR ANY INFORMATION CONTAINED IN THIS DRAWING MAY BE REPRODUCED OR DISCLOSED TO OTHERS WITHOUT THE EXPRESS WRITTEN CONSENT OF ALLIED MOTION TECHNOLOGIES INC. AND ITS SUBSIDIARIES.				TOLERANCES (EXCEPT AS NOTED) DECIMAL .XX ± .25 .XXX ± .10		 W132N10611 (Rev 13 Feb 2023) Germantown, WI 53022 © 2023 TCI, LLC
				FRACTIONAL ± 1/16 ANGULAR ± 1°		
NO	REVISION	DATE	BY			