

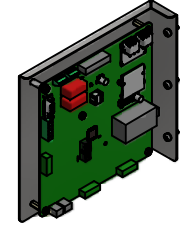
HGP Part Number	Schematic Drawing #	Approx Weight (LBS)
HGP0075AW3S0000	28697-4S	246
HGP0075AW3C0000	28697-4	248
HGP0075AW3C000H	28697-4H	252
HGP0075AW3S1000	29597-PQ	249
HGP0075AW3C1000	29597-PQ	251
HGP0075AW3C100H	29597-PQH	255

HGP Part Number	HorsePower (HP)	kVar	Maximum Amps (A)	Harmonic	Voltage (V)	Hz.	Phase
HGP0075AW3----	75	25	96	5th	480	60	3

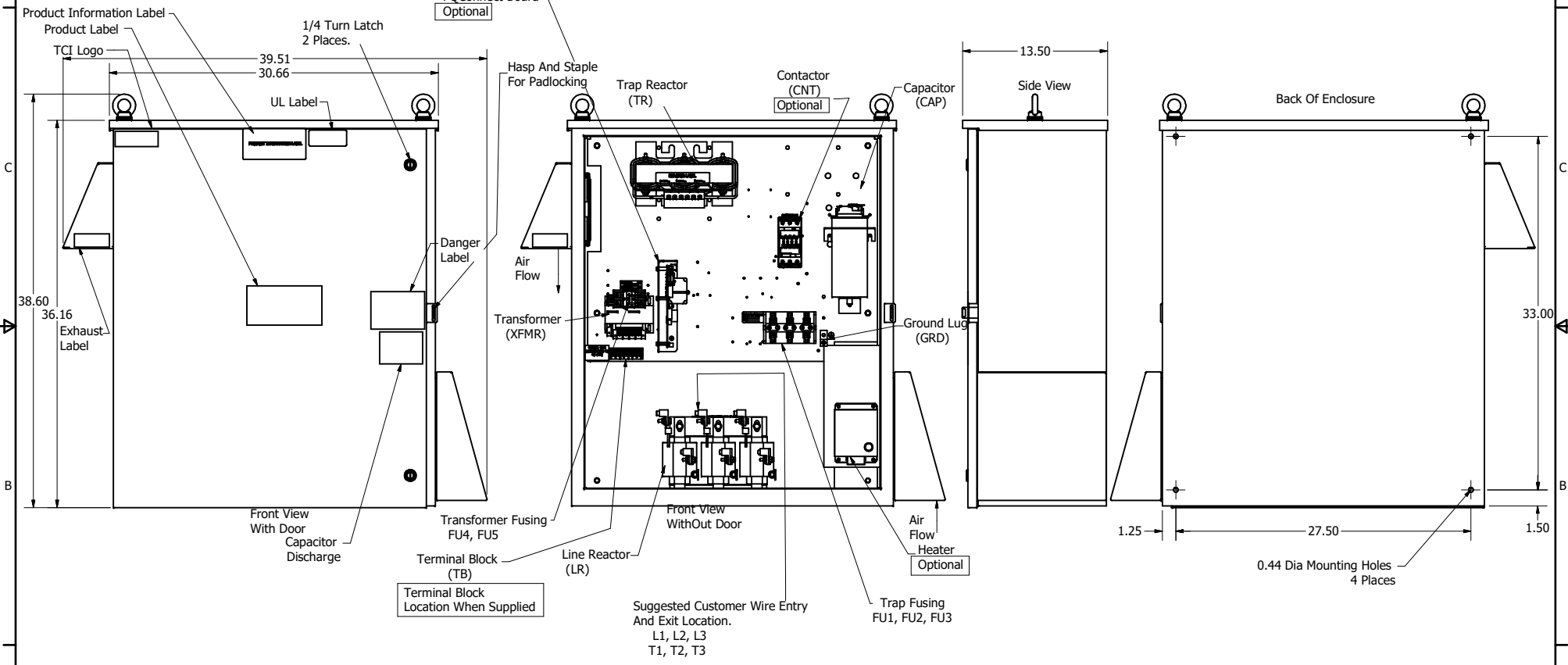
Note: For Torque Information
See IOM Manual

Customer Connections.
L1, L2, L3, T1, T2, T3
Wire Range: 2/0 AWG to 14AWG.

Ground Lug
Wire Range: 2/0 to 14 AWG.



PQConnect Board
Optional



Components	HGP0075AW3----					
	S0000	C0000	C000H	S1000	C1000	C100H
Line Reactor (LR)	x	x	x	x	x	x
Trap Reactor (TR)	x	x	x	x	x	x
Capacitor (Cap)	x	x	x	x	x	x
Trap Fusing, FU1, FU2, FU3	x	x	x	x	x	x
Contactor (CNT)		x	x		x	x
Transformer (XFMR)	x	x	x	x	x	x
XFMR Fusing, FU4, FU5	x	x	x	x	x	x
Heater			x			x
PQConnect Board				x	x	x

NOTE: USE ONLY HUBS OR FITTINGS THAT COMPLY WITH UL514B FOR TYPE 3R ENCLOSURES

Customer Is Responsible For Installation to Meet All National And Local Electrical Codes.

Material(s) Shall be RoHS Compliant

THE INFORMATION AND DESIGNS CONTAINED IN THIS DRAWING ARE CONFIDENTIAL AND THE PROPRIETARY PROPERTY OF ALLIED MOTION TECHNOLOGIES INC. AND ITS SUBSIDIARIES. NEITHER THIS DESIGN NOR ANY INFORMATION CONTAINED IN THIS DRAWING MAY BE REPRODUCED OR DISCLOSED TO OTHERS WITHOUT THE EXPRESS WRITTEN CONSENT OF ALLIED MOTION TECHNOLOGIES INC. AND ITS SUBSIDIARIES.	REVISED	DATE	BY	TOLERANCES (EXCEPT AS NOTED)	 W132N10611 Grant Drive Germanstown, WI 53022 © 2021 TCI, LLC An <i>allied motion</i> Company Harmonic Guard Passive HGP_75HP_480/3/60_Type 3R 105560DG	
	G	5636 GE to ABB CNT CHG.	8/17/2021	DSW		DECIMAL .XX ± .25 .XXX ± .10
	F	5265, Update Enclosure	7/31/2020	DSW		FRACTIONAL ± 1/16
	E	Add PQconnect	6/11/18	DSW		ANGULAR ± 1°
	NO	REVISION	DATE	BY		