

HGP Open Part Number	Schematic Drawing #	Approx Weight (LBS)
HGP0060BW0S0000	30209-S	345
HGP0060BW0C0000	30209	350

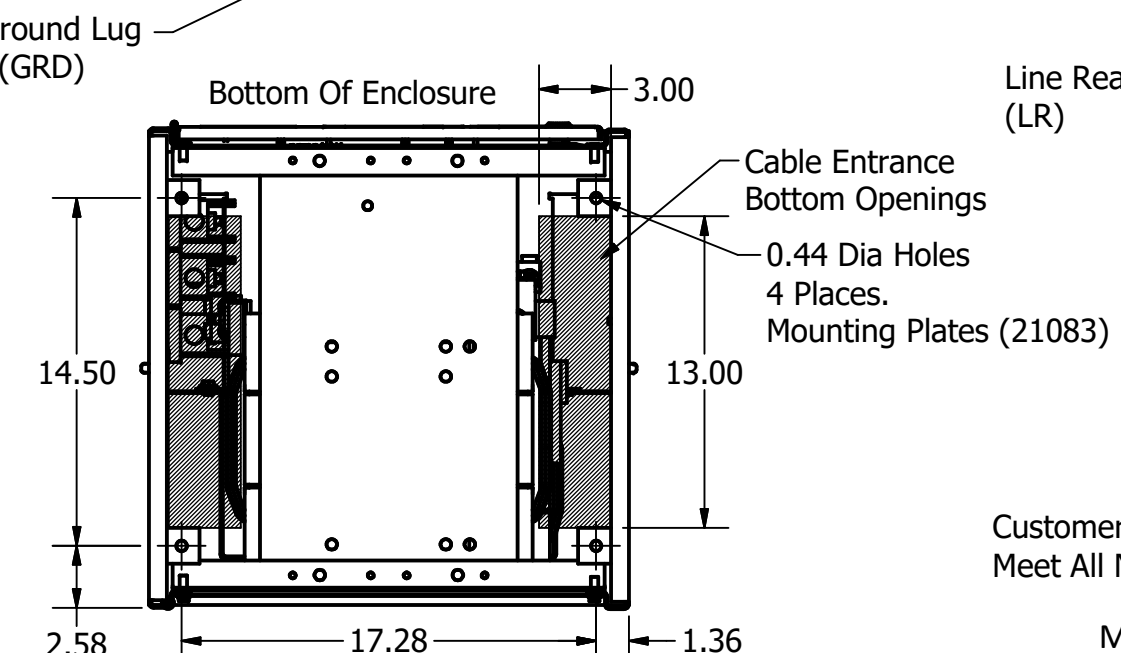
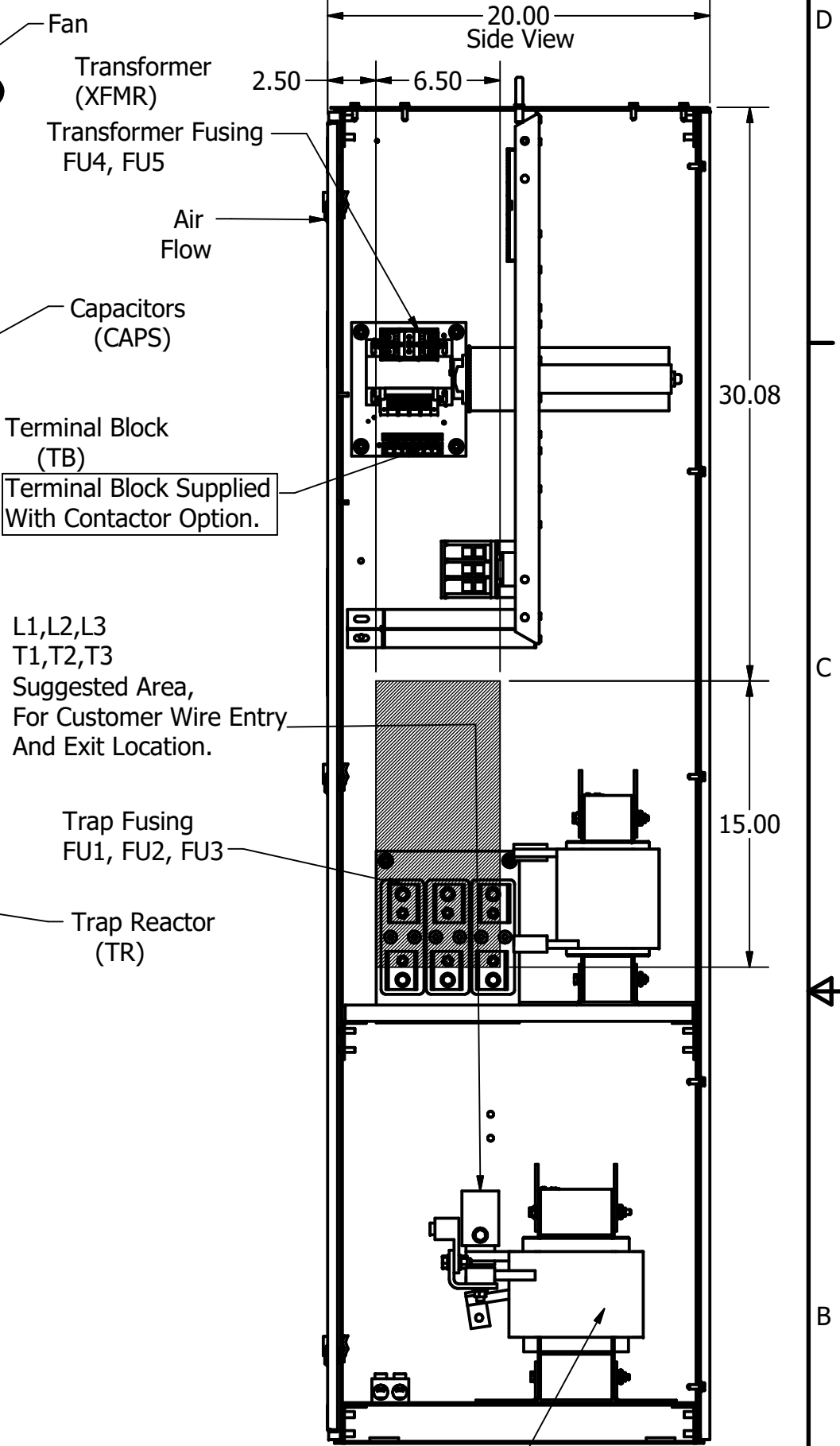
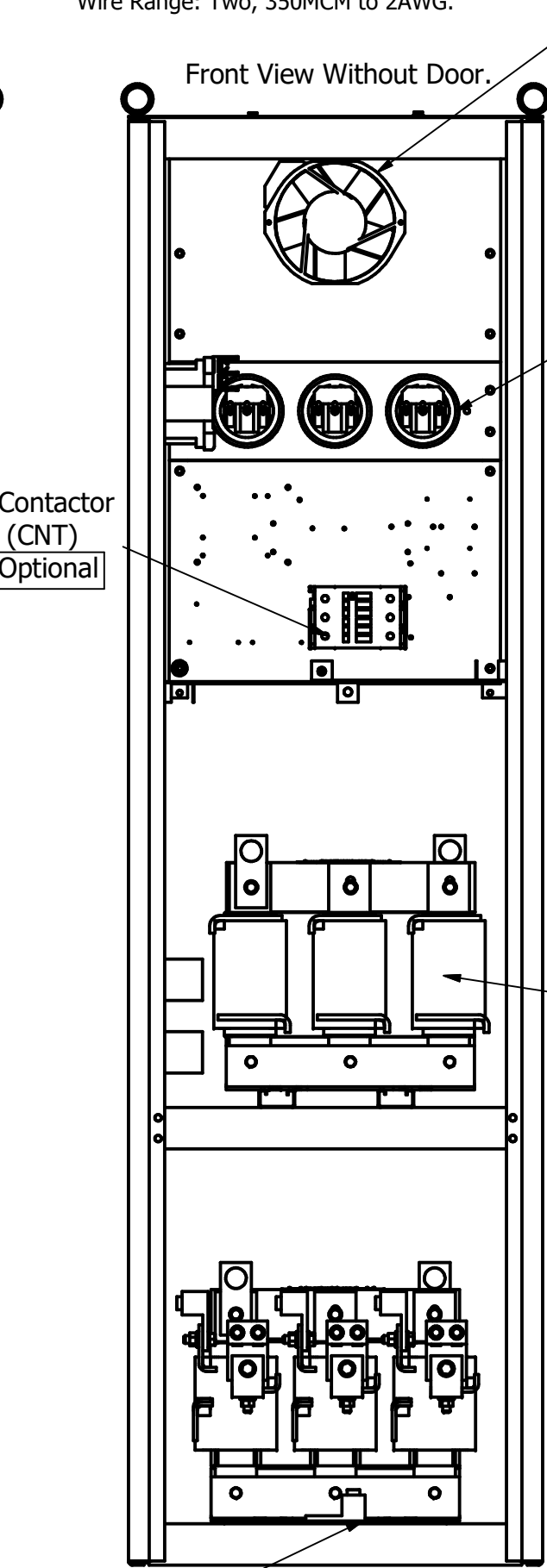
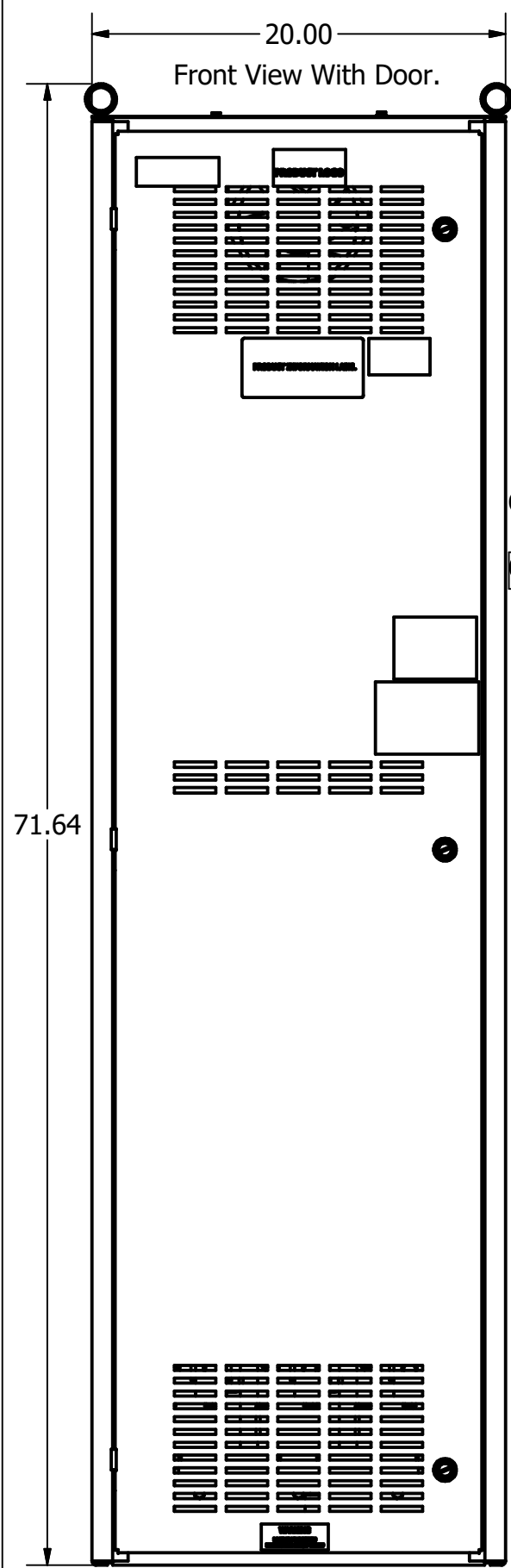
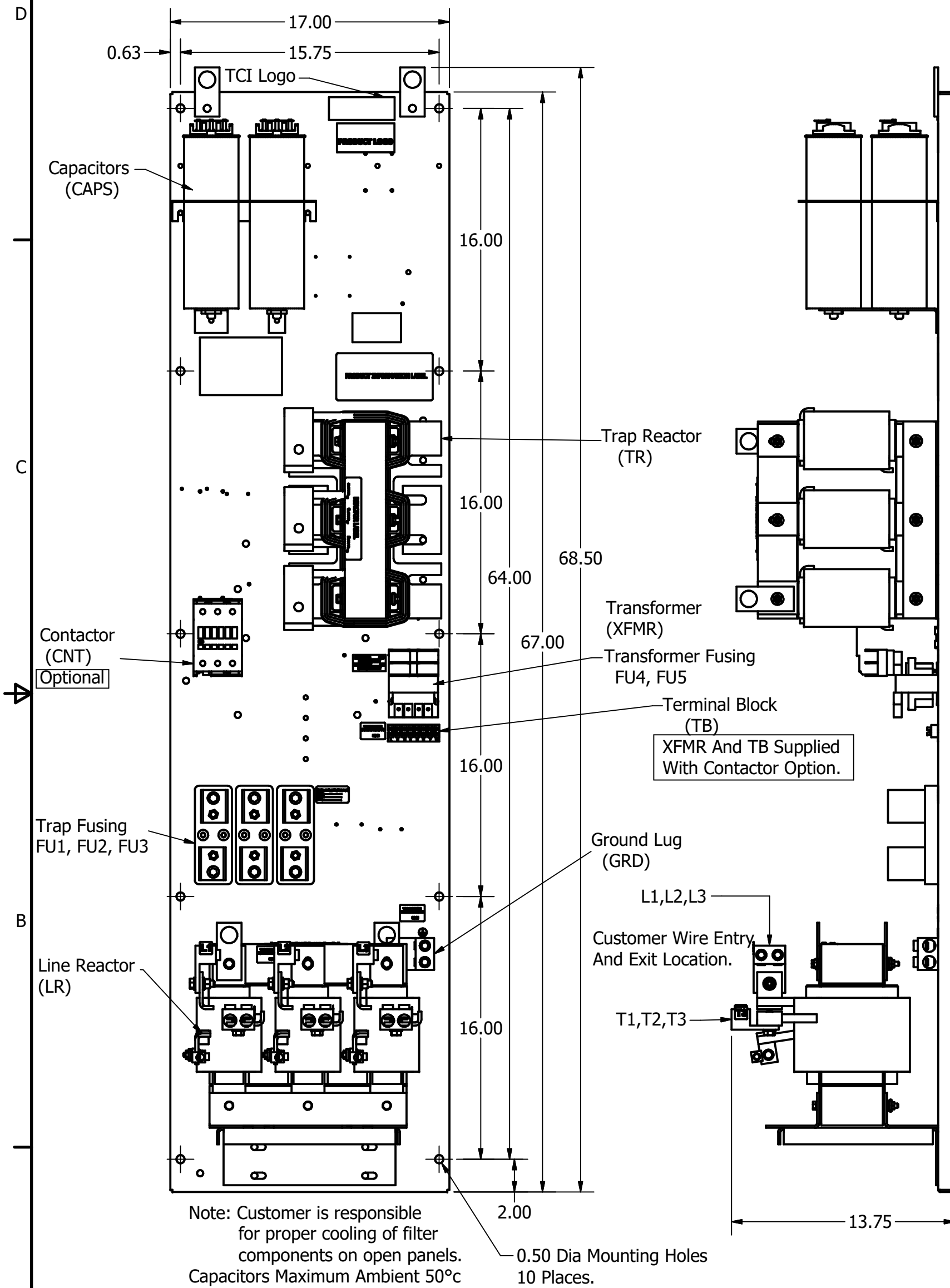
HGP Part Number	HorsePower (HP)	kVar	Harmonic	Voltage (V)	Hz.	Phase
HGP0060BW----	60	15	5th	240	60	3

HGP Eclosed Type 1 Part Number	Schematic Drawing #	Approx Weight (LBS)
HGP0060BW1S0000	30209-1S	496
HGP0060BW1C0000	30209-1	500

Note: For Torque Information See IOM Manual.

Customer Connections.  
L1, L2, L3, T1, T2, T3  
Wire Range: Two, 350MCM to 2AWG.

Ground Lug  
Wire Range: Two, 350MCM to 2AWG.



Note: Customer is responsible for proper cooling of filter components on open panels. Capacitors Maximum Ambient 50°C

Components	HGP0060BW----			
	0S0000	0C0000	0S0000	1C0000
Line Reactor (LR)	X	X	X	X
Trap Reactor (TR)	X	X	X	X
Capacitor (Cap)	X	X	X	X
Trap Fusing, FU1, FU2, FU3	X	X	X	X
Contactor (CNT)		X		X
Transformer (XFMR)		X	X	X
XFMR Fusing, FU4, FU5		X	X	X

Customer Is Responsible For Installation to Meet All National And Local Electrical Codes.

Material(s) Shall be RoHS Compliant

TCI, LLC CLAIMS PROPRIETARY RIGHTS IN THE MATERIAL HEREIN DISCLOSED. IT IS SUPPLIED WITHOUT PREJUDICE TO ANY PATENT RIGHTS OF TCI AND MAY NOT BE REPRODUCED OR USED TO MANUFACTURE ANYTHING SHOWN THEREIN WITHOUT WRITTEN PERMISSION FROM TCI.	TOLERANCES (EXCEPT AS NOTED)			W132 N10611 Grant Drive Germantown, WI 53022 HarmonicGuard Passive HGP, 60HP, 240/3/60, Open and Type 1
	DECIMAL			
	.XX ± .25			
	.XXX ± .10			
FRACTIONAL			DRN BY: JRN DATE: 10/05/18 SCALE: 1/6 APRVD: 107903DG SIZE: C	
± 1/16				
ANGULAR			SHT 1 OF 1	
± 1°				
NO	REVISION	DATE	BY	