

HGP Open Part Number	Schematic Drawing #	Approx Weight (LBS)
HGP0050AW0S0000	29597-S	109
HGP0050AW0C0000	29597	114
HGP0050AW0S1000	29597-PQ1	110
HGP0050AW0C1000	29597-PQ	115

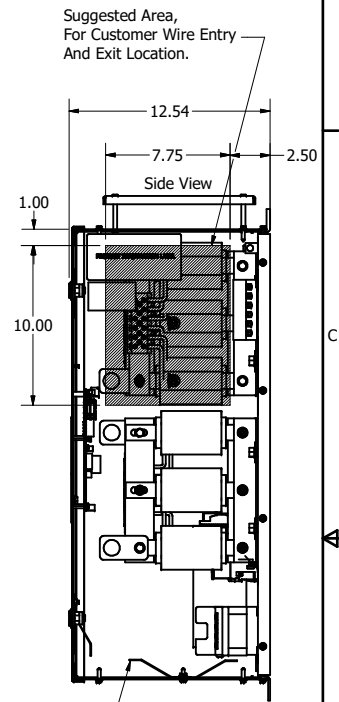
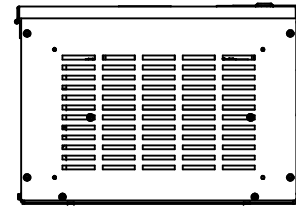
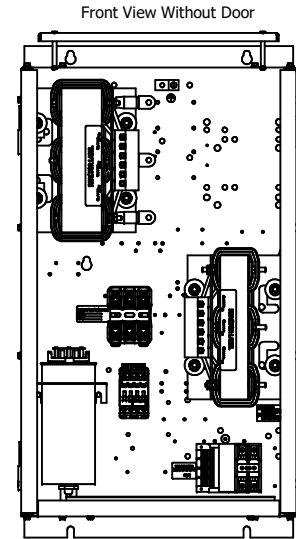
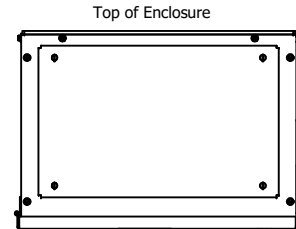
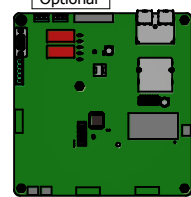
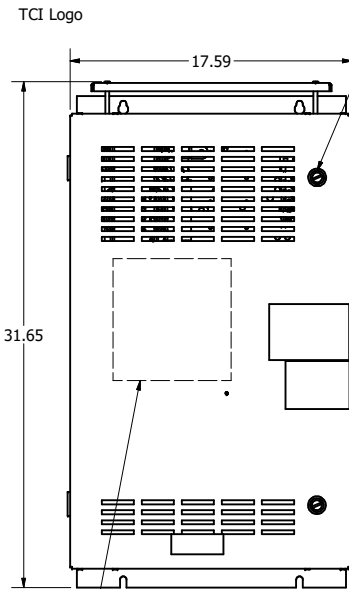
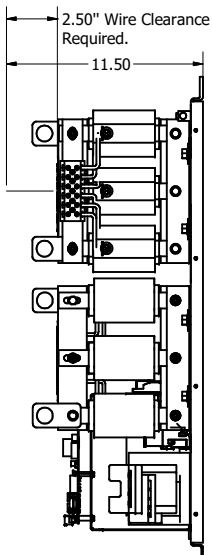
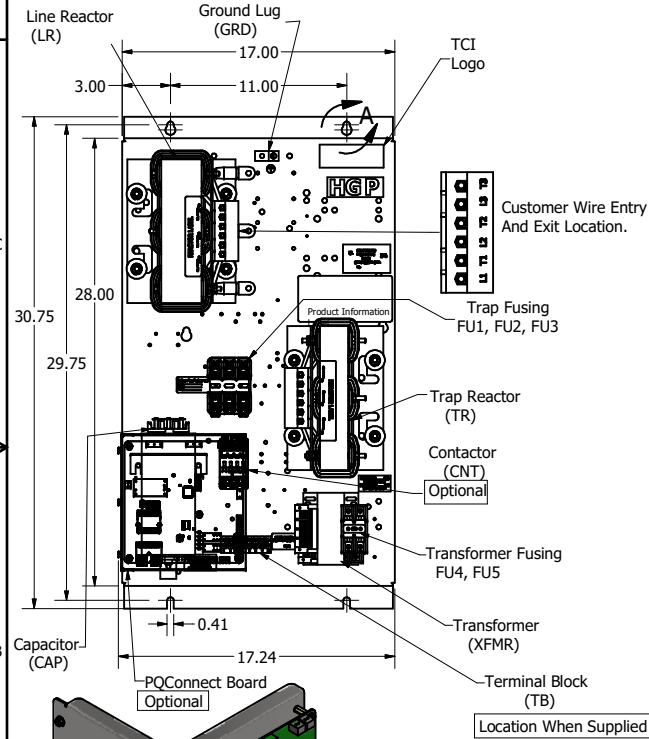
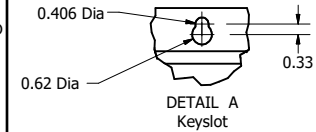
HGP Part Number	HorsePower (HP)	kVar	Maximum Amps (A)	Harmonic	Voltage (V)	Hz.	Phase
HGP0050AW----	50	15	65	5th	480	60	3

HGP Type 1 Part Number	Schematic Drawing #	Approx Weight (LBS)
HGP0050AW1S0000	29597-S	147
HGP0050AW1C0000	29597	152
HGP0050AW1S1000	29597-PQ1	148
HGP0050AW1C1000	29597-PQ	153

Note: For Torque Information
See IOM Manual

Customer Connections.
L1, T1, L2, T2, L3, T3
Wire Range: 1 AWG to 22 AWG.

Ground Lug
Wire Range: 1/0 to 14 AWG.



Note: Customer is responsible for proper cooling of filter components on open panels.
Capacitors Maximum Ambient 50°C.

HGP0050AW----				
Components	0S0000/1S0000	0C0000/1C0000	0S1000/1S1000	0C1000/1C1000
Line Reactor (LR)	X	X	X	X
Trap Reactor (TR)	X	X	X	X
Capacitor (Cap)	X	X	X	X
Trap Fusing, FU1, FU2, FU3	X	X	X	X
Contactor (CNT)		X		X
Transformer (XFMR)		X	X	X
XFMR Fusing, FU4, FU5		X	X	X
PQConnect Board			X	X

Customer Is Responsible For Installation to Meet All National And Local Electrical Codes.

Material(s) Shall be RoHS Compliant

THE INFORMATION AND DESIGNS CONTAINED IN THIS DRAWING ARE CONFIDENTIAL AND THE PROPRIETARY PROPERTY OF ALLIED MOTION TECHNOLOGIES INC. AND ITS SUBSIDIARIES. NEITHER THIS DESIGN NOR ANY INFORMATION CONTAINED IN THIS DRAWING MAY BE REPRODUCED OR DISCLOSED TO OTHERS WITHOUT THE EXPRESS WRITTEN CONSENT OF ALLIED MOTION TECHNOLOGIES INC. AND ITS SUBSIDIARIES.				TOLERANCES (EXCEPT AS NOTED)		 <small>WI 50422</small> <small>© 2021 TCI, LLC</small>	
G	6125 update Weights	12/13/2022	DSW	DECIMAL			
F	5599-1, CNT GE to ABB	6/1/2021	DSW	.XX ± .25 .XXX ± .10			
E	5321 Component Chart Updated	07/23/20	JRN				
D	4760, ADD HARNESS	5/28/19	DSW	FRACTIONAL			
C	PQConnect Board Added.	6/14/18	DSW	± 1/32 ANGULAR			
NO	REVISION	DATE	BY	± 1°			

 <small>WI 50422</small> <small>© 2021 TCI, LLC</small>			
Harmonic Guard Passive HGP, 50HP, 480/3/60, Open and Type 1.			
<small>OWN BY</small> DSW	<small>DATE</small> 10/11/13	<small>REV</small> 105484DG	<small>SCALE</small> 1/8
<small>SCALE</small> 1/8	<small>REVISED</small> 105484DG	<small>DATE</small> 10/11/13	<small>BY</small> DSW