

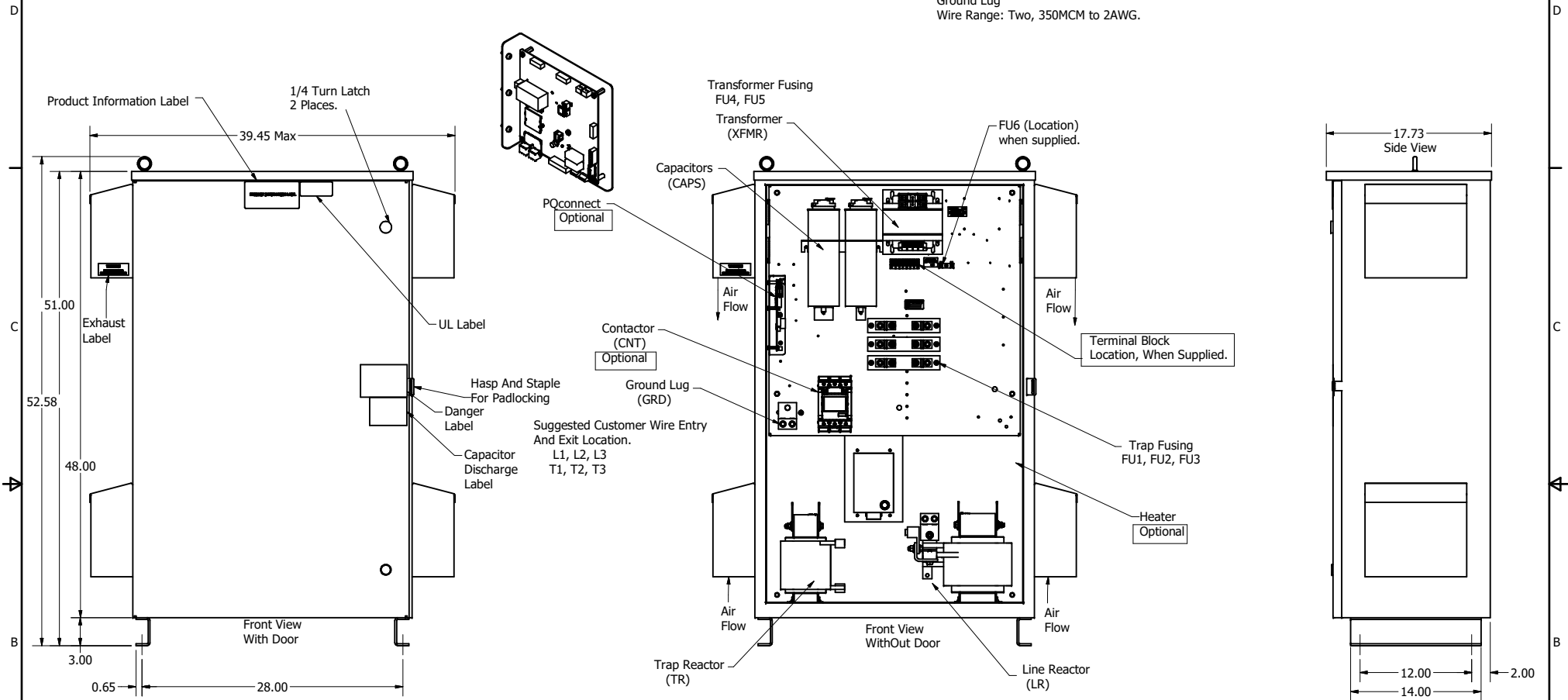
HGP Part Number	HorsePower (HP)	kVar	Harmonic	Voltage (V)	Hz.	Phase
HGP0040DW3----	40	11.27	5th	208	60	3

Note: For Torque Information See IOM Manual

Customer Connections.
L1, L2, L3, T1, T2, T3
Wire Range: Two, 350MCM to 2AWG.

Ground Lug
Wire Range: Two, 350MCM to 2AWG.

HGP Part Number	Schematic Drawing #	Approx Weight (LBS)
HGP0040DW3S0000	28697-208-2S	470
HGP0040DW3C0000	28697-208-2	475
HGP0040DW3C1000	29597-DWPQ1	478
HGP0040DW3C000H	28697-208-2H	480
HGP0040DW3C100H	29597-DWPQH	483



Components	HGP0040DW3----				
	S0000	C0000	C000H	C1000	C100H
Line Reactor (LR)	x	x	x	x	x
Trap Reactor (TR)	x	x	x	x	x
Capacitor (Cap)	x	x	x	x	x
Trap Fusing, FU1, FU2, FU3	x	x	x	x	x
Contactor (CNT)		x	x	x	x
Transformer (XFMR)	x	x	x	x	x
XFMR Fusing, FU4, FU5	x	x	x	x	x
Heater			x		x
PQConnect Board				x	x

Customer Is Responsible For Installation to Meet All National And Local Electrical Codes.


NOTE: USE ONLY HUBS OR FITTINGS THAT COMPLY WITH UL514B FOR TYPE 3R ENCLOSURES

Material(s) Shall be RoHS Compliant

THE INFORMATION AND DESIGNS CONTAINED IN THIS DRAWING ARE CONFIDENTIAL AND THE PROPRIETARY PROPERTY OF ALLIED MOTION TECHNOLOGIES INC. AND ITS SUBSIDIARIES. NEITHER THIS DESIGN NOR ANY INFORMATION CONTAINED IN THIS DRAWING MAY BE REPRODUCED OR DISCLOSED TO OTHERS WITHOUT THE EXPRESS WRITTEN CONSENT OF ALLIED MOTION TECHNOLOGIES INC. AND ITS SUBSIDIARIES.

REV	DATE	BY	DESCRIPTION
NO			
AS	9/1/2020	DSW	As Designed

TOLERANCES (EXCEPT AS NOTED)		SCALE	
DECIMAL	.XX ± .25 .XXX ± .10	1/8	
FRACTIONAL	± 1/32		
ANGULAR	± 1°		


 W182N10611 (Rev. 11/16)
 Germantown, WI 53022
 © 2023 TCI, LLC
 An Allied Motion Company
 Harmonic Guard Passive
 HGP, 40HP, 208/3/60, Type 3R
 DSN BY: DSW DATE: 9/1/2020 108712DG
 SCALE: 1/8 DRAWN BY: JCE SHEET 1 OF 1