

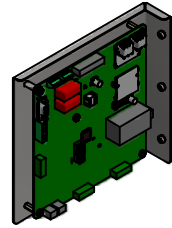
HGP Part Number	HorsePower (HP)	Max Amps (A)	kVar	Harmonic	Voltage (V)	Hz.	Phase
HGP0040AW3----	40	52	15	5th	480	60	3

Note: For Torque Information See IOM Manual

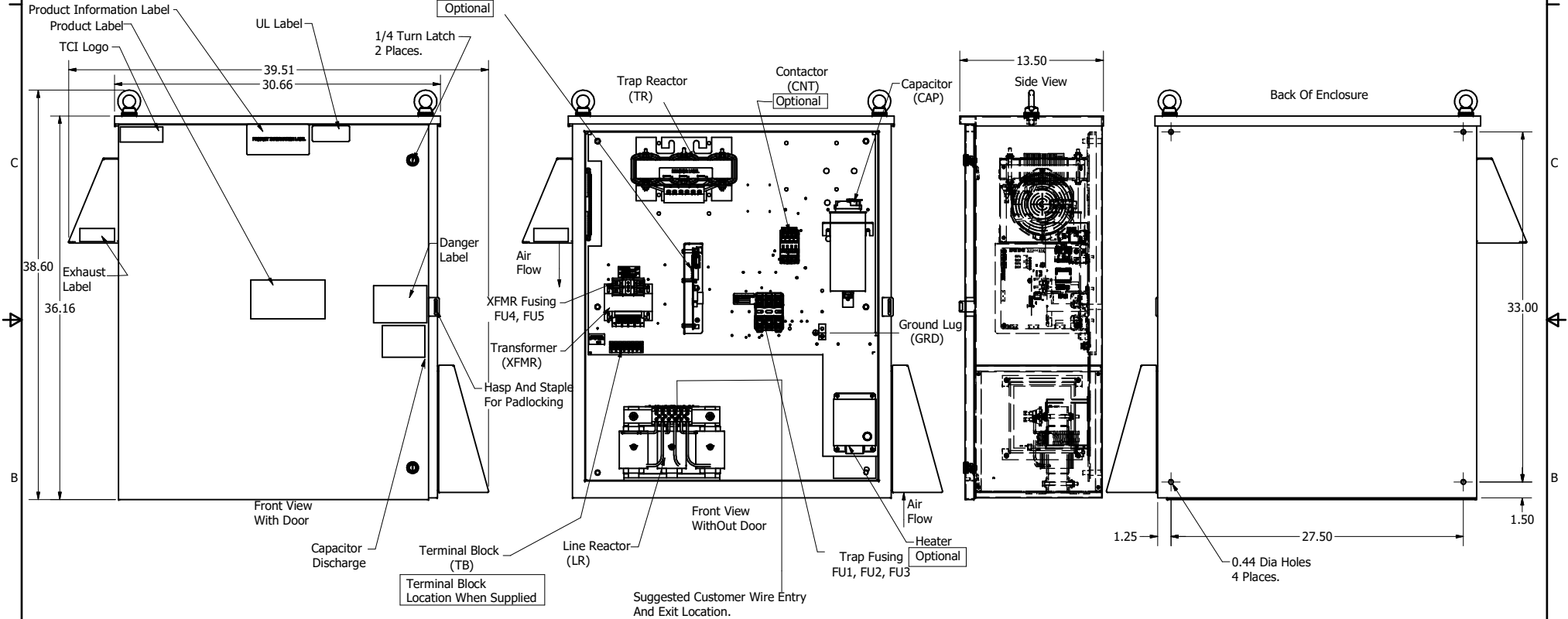
Customer Connections.  
L1, T1, L2, T2, L3, T3  
Wire Range: 1 AWG to 22 AWG.

Ground Lug  
Wire Range: 1/0 to 14 AWG.

HGP Part Number	Schematic Drawing #	Approx Weight (LBS)
HGP0040AW3S0000	28697-4S	220
HGP0040AW3C0000	28697-4	221
HGP0040AW3C000H	28697-4H	225
HGP0040AW3S1000	29597-PQ1	222
HGP0040AW3C1000	29597-PQ	223
HGP0040AW3C100H	29597-PQH	227



PQConnect Board  
Optional



Components	HGP0040AW3----					
	S0000	C0000	C000H	S1000	C1000	C100H
Line Reactor (LR)	x	x	x	x	x	x
Trap Reactor (TR)	x	x	x	x	x	x
Capacitor (Cap)	x	x	x	x	x	x
Trap Fusing, FU1, FU2, FU3	x	x	x	x	x	x
Contactor (CNT)		x	x		x	x
Transformer (XFMR)	x	x	x	x	x	x
XFMR Fusing, FU4, FU5	x	x	x	x	x	x
Heater			x			x
PQConnect Board				x	x	x

NOTE: USE ONLY HUBS OR FITTINGS THAT COMPLY WITH UL514B FOR TYPE 3R ENCLOSURES

Customer Is Responsible For Installation to Meet All National And Local Electrical Codes.

Material(s) Shall be RoHS Compliant

THE INFORMATION AND DESIGNS CONTAINED IN THIS DRAWING ARE CONFIDENTIAL AND THE PROPRIETARY PROPERTY OF ALLIED MOTION TECHNOLOGIES INC. AND ITS SUBSIDIARIES. NEITHER THIS DESIGN NOR ANY INFORMATION CONTAINED IN THIS DRAWING MAY BE REPRODUCED OR DISCLOSED TO OTHERS WITHOUT THE EXPRESS WRITTEN CONSENT OF ALLIED MOTION TECHNOLOGIES INC. AND ITS SUBSIDIARIES.	G	5599-1, CNT GE to ABB	5/27/2021	DSW	DECIMAL .XX ± .25 .XXX ± .10	TOLERANCES (EXCEPT AS NOTED) DECIMAL FRACTIONAL ANGLULAR ± 1°	W182N10611 Grant Drive Germantown, WI 53022 © 2021 TCI, LLC An <b>Official Motion Company</b> HarmonicGuard Passive, HGP0040AW3---- HGP, 40HP, 480/3/60, Type 3R 105557DG
	F	5410, Cap 27608 to 28566	10/15/2020	DSW			
	E	5265, Enclosure Updated	5/14/2020	DSW			
	D	Add PQconnect	6/11/18	DSW			
	NO	REVISION	DATE	BY			