

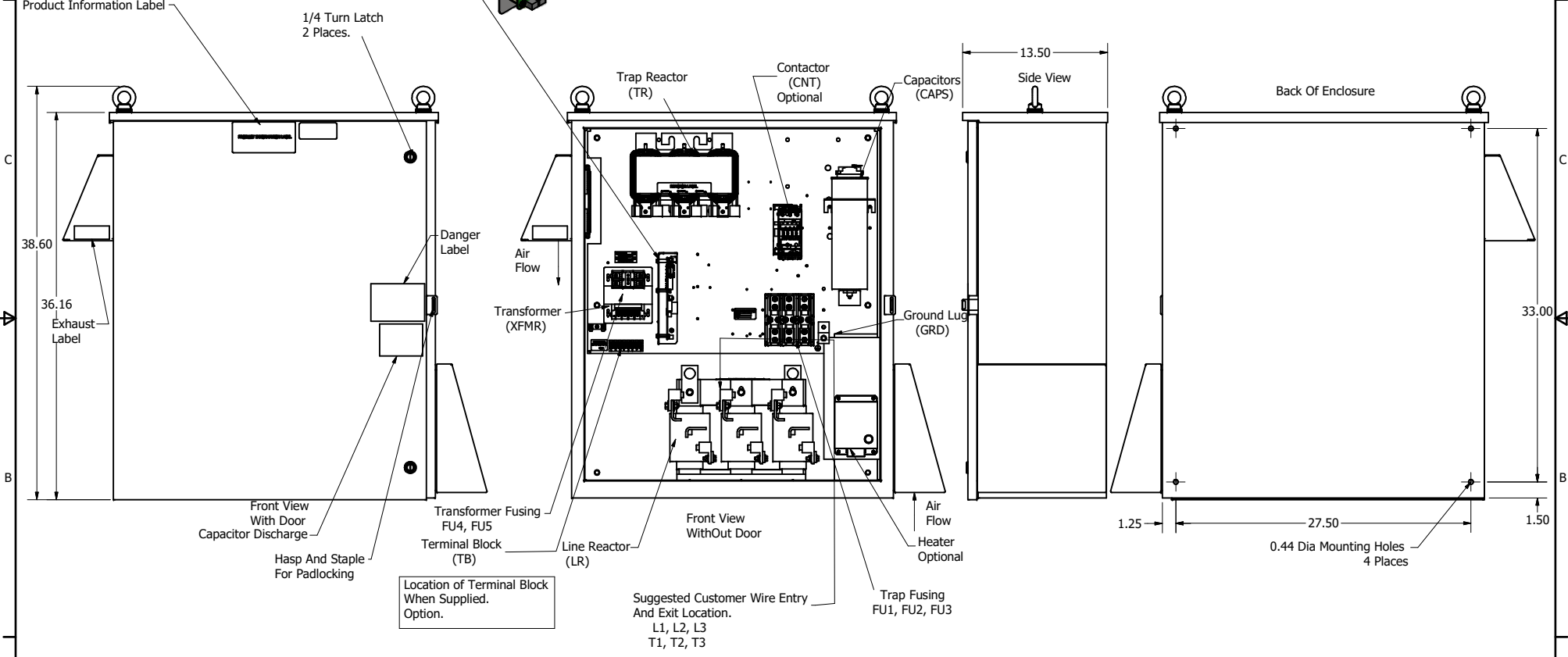
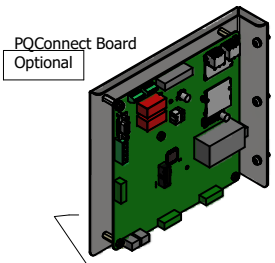
HGP Part Number	HorsePower (HP)	kVar	Harmonic	Voltage (V)	Hz.	Phase
HGP0030DW3----	30	7.5	5th	208	60	3

HGP Part Number	Schematic Drawing #	Approx Weight (LBS)
HGP0030DW3S0000	28697-208-2S	289
HGP0030DW3C0000	28697-208-2	291
HGP0030DW3C000H	28697-208-2H	295
HGP0030DW3S1000	29597-DWPQ1	292
HGP0030DW3C1000	29597-DWPQ	294
HGP0030DW3C100H	29597-DWPQH	298

Note: For Torque Information See IOM Manual

Customer Connections.
L1, L2, L3, T1, T2, T3
Wire Range: 250MCM to 6AWG.

Ground Lug
Wire Range: 250MCM to 6AWG.



HGP0030DW3----						
Components	S0000	C0000	C000H	S1000	C1000	C100H
Line Reactor (LR)	x	x	x	X	X	X
Trap Reactor (TR)	x	x	x	X	X	X
Capacitor (Cap)	x	x	x	X	X	X
Trap Fusing, FU1, FU2, FU3	x	x	x	X	X	X
Contactor (CNT)		x	x		X	X
Transformer (XFMR)	x	x	x	X	X	X
XFMR Fusing, FU4, FU5	x	x	x	X	X	X
Heater			x			X
PQConnect Board				X	X	X

NOTE: USE ONLY HUBS OR FITTINGS THAT COMPLY WITH UL514B FOR TYPE 3R ENCLOSURES

Customer Is Responsible For Installation to Meet All National And Local Electrical Codes.

Material(s) Shall be RoHS Compliant

THE INFORMATION AND DESIGNS CONTAINED IN THIS DRAWING ARE CONFIDENTIAL AND THE PROPRIETARY PROPERTY OF ALLIED MOTION TECHNOLOGIES INC. AND ITS SUBSIDIARIES. NEITHER THIS DESIGN NOR ANY INFORMATION CONTAINED IN THIS DRAWING MAY BE REPRODUCED OR DISCLOSED TO OTHERS WITHOUT THE EXPRESS WRITTEN CONSENT OF ALLIED MOTION TECHNOLOGIES INC. AND ITS SUBSIDIARIES.					TOLERANCES (EXCEPT AS NOTED) DECIMAL .XX ± .25 .XXX ± .10
	B	S265, Update Enclosure	8/6/2020	DSW	FRACTIONAL ± 1/32
	A	As Designed	03/06/2020	JRN	ANGULAR ± 1°
	NO	REVISION	DATE	BY	SCALE: 1/8
W182N10611 (Rev 13) 5/6 Germantown, WI 53022 © 2023 TCI, LLC An Allied Motion Company Harmonic Guard Passive HGP_30HP_208/3/60_Type 3R 108510DG					SHEET 1 OF 1