

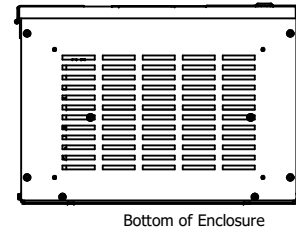
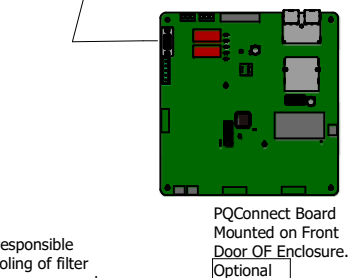
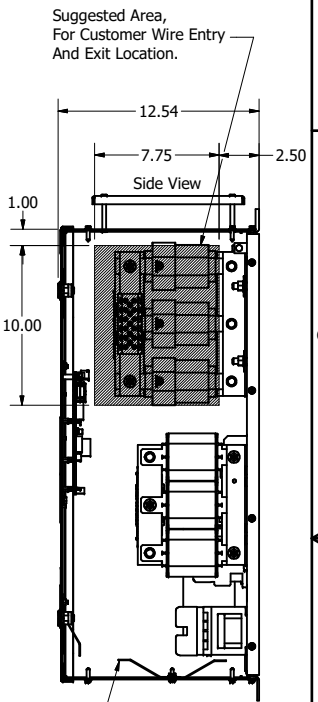
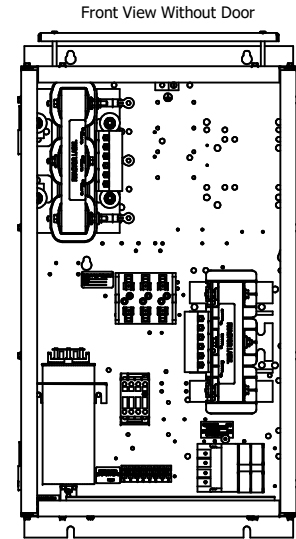
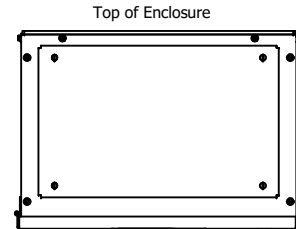
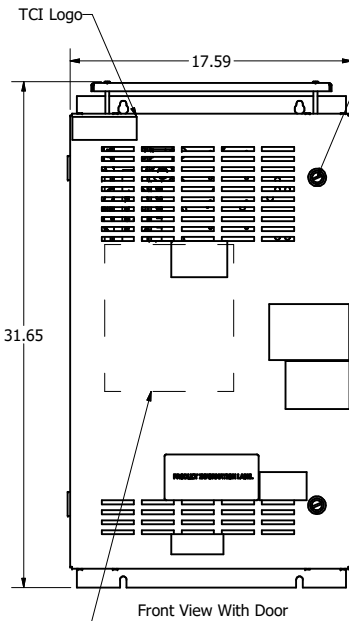
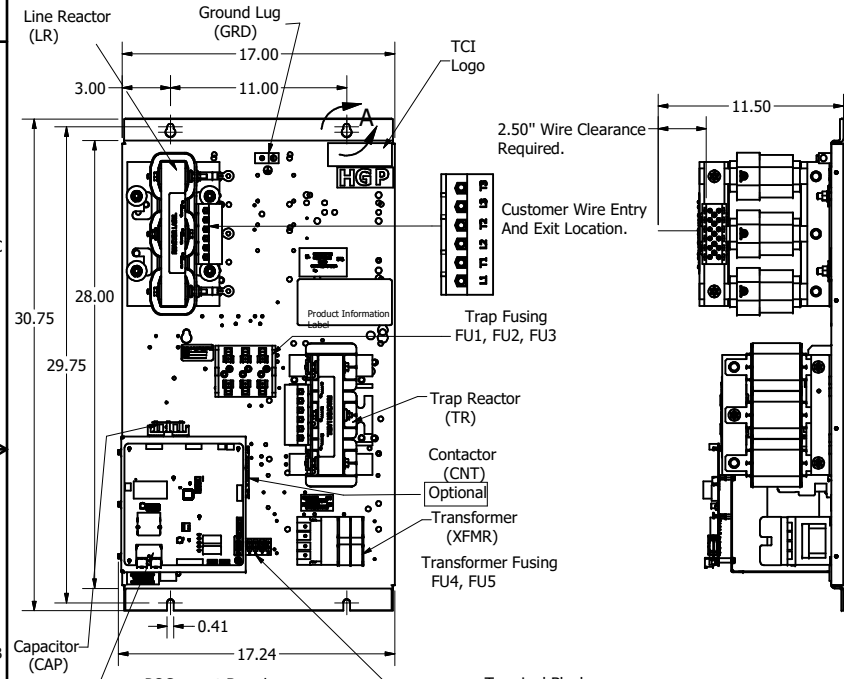
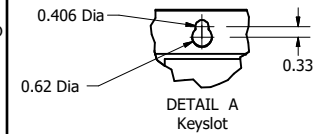
HGP Open Part Number	Schematic Drawing #	Approx Weight (LBS)
HGP0030CW0S0000	29474	81
HGP0030CW0C0000	29474-1	85
HGP0030CW0S1000	29474-PQ1	84
HGP0030CW0C1000	29474-PQ	88

HGP Part Number	HorsePower (HP)	kVar	Harmonic	Voltage (V)	Hz.	Phase
HGP0030CW----	30	10	5th	600	60	3

HGP Enclosed Type 1 Part Number	Schematic Drawing #	Approx Weight (LBS)
HGP0030CW1S0000	29474	145
HGP0030CW1C0000	29474-1	150
HGP0030CW1S1000	29474-PQ1	146
HGP0030CW1C1000	29474-PQ	151

Note: For Torque Information See IOM Manual
Customer Connections.
L1, T1, L2, T2, L3, T3
Wire Range: 1 AWG to 22 AWG.

Ground Lug
Wire Range: 1/0 to 14 AWG.



Note: Customer is responsible for proper cooling of filter components on open panels. Capacitors Maximum Ambient 50°C.

Components	HGP0030CW----			
	0S0000/1S0000	0C0000/1C0000	0S1000/1S1000	0C1000/1C1000
Line Reactor (LR)	X	X	X	X
Trap Reactor (TR)	X	X	X	X
Capacitor (Cap)	X	X	X	X
Trap Fusing, FU1, FU2, FU3	X	X	X	X
Contactor (CNT)	X	X	X	X
Transformer (XFMR)	X	X	X	X
XFMR Fusing, FU4, FU5	X	X	X	X
PQConnect Board			X	X

Customer Is Responsible For Installation to Meet All National And Local Electrical Codes.

Material(s) Shall be RoHS Compliant

TCI, LLC CLAIMS PROPRIETARY RIGHTS IN THE MATERIAL HEREIN DISCLOSED. IT IS SUPPLIED WITHOUT PREJUDICE TO ANY PATENT RIGHTS OF TCI AND MAY NOT BE REPRODUCED OR USED TO MANUFACTURE ANYTHING SHOWN THEREIN WITHOUT WRITTEN PERMISSION FROM TCI.	REVISED	DATE	BY	SCALE	DRN BY	DATE	FILE	
	NO	REVISION	DATE	BY	SCALE	DRN BY	DATE	
				TOLERANCES (EXCEPT AS NOTED)	W 132 N10611 Grant Drive Germantown, WI 53022			
				DECIMAL	.XX ± .25 .XXX ± .10			
				FRACTIONAL	± 1/16			
				ANGULAR	± 1°			
				HarmonicGuard Passive HGP, 30HP, 600/3/60, Open and Type 1.				
				106774DG SCALE: 1/8 DATE: 44/2216 FILE:				
				SHEET 1 OF 1				