

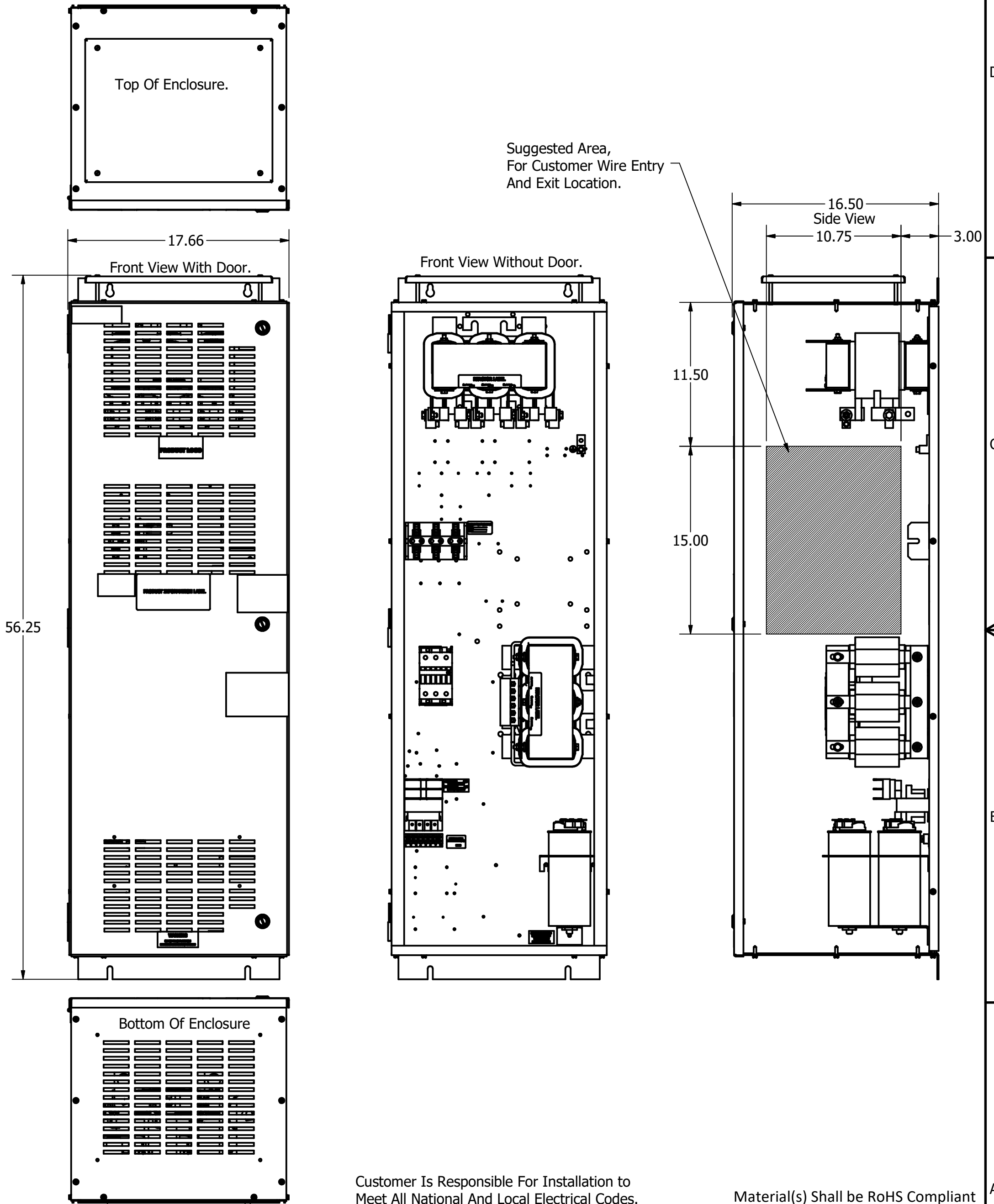
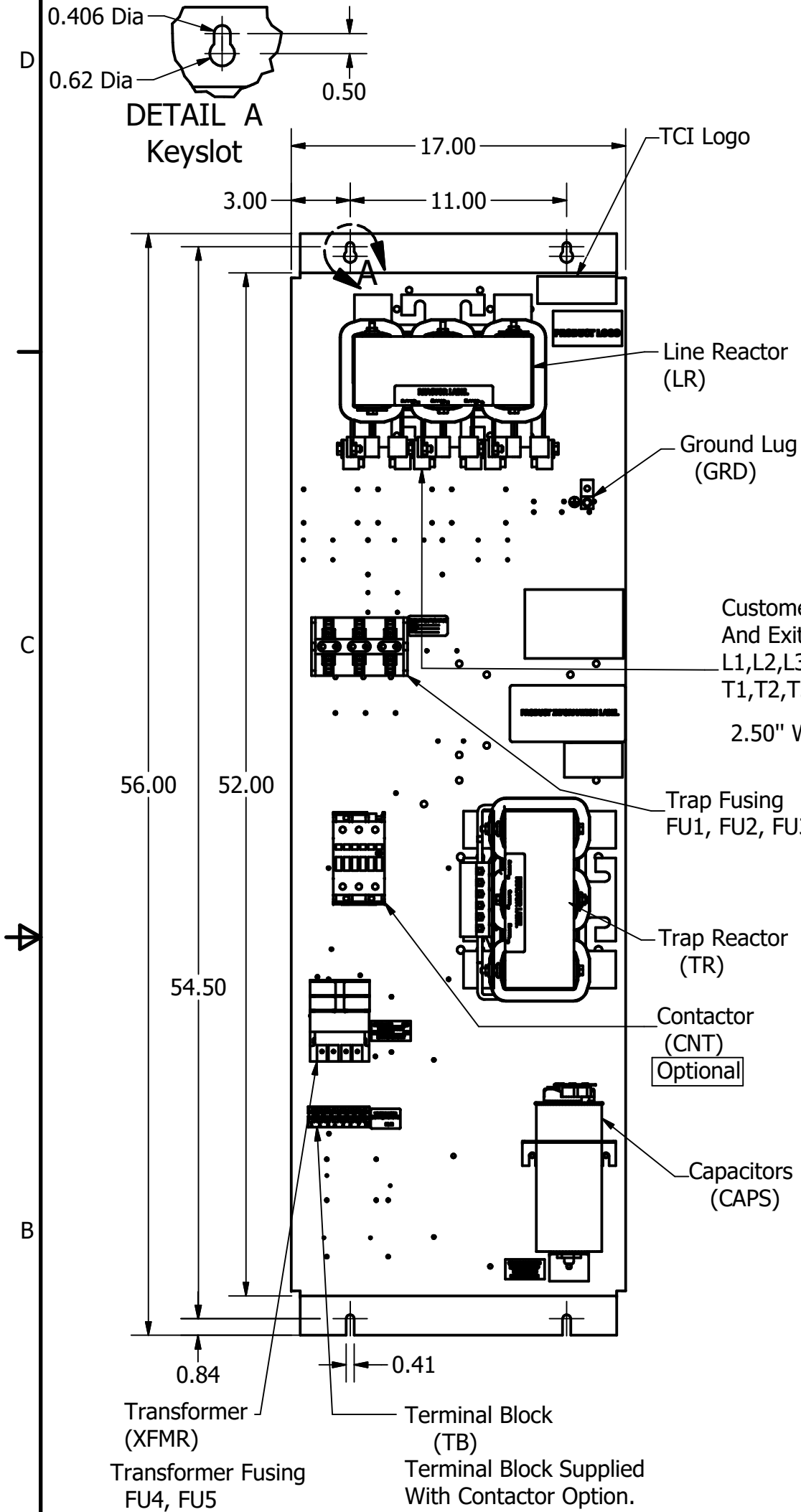
| HGP Open Part Number | Schematic Drawing # | Approx Weight (LBS) |
|----------------------|---------------------|---------------------|
| HGP0030BW0S0000 | 30209-S | 205 |
| HGP0030BW0C0000 | 30209 | 202 |

| HGP Part Number | HorsePower (HP) | kVar | Harmonic | Voltage (V) | Hz. | Phase |
|-----------------|-----------------|------|----------|-------------|-----|-------|
| HGP0030BW---- | 30 | 7.5 | 5th | 240 | 60 | 3 |

| HGP Eclosed Type 1 Part Number | Schematic Drawing # | Approx Weight (LBS) |
|--------------------------------|---------------------|---------------------|
| HGP0030BW1S0000 | 30209-S | 295 |
| HGP0030BW1C0000 | 30209 | 300 |

Note: For Torque Information See IOM Manual.
 Customer Connections. L1, L2, L3, T1, T2, T3
 Wire Range: 2/0 AWG to 14AWG.

Ground Lug
 Wire Range: 2/0 to 14 AWG.



Note: Customer is responsible for proper cooling of filter components on open panels.
 Capacitors Maximum Ambient 50°C

Customer Is Responsible For Installation to Meet All National And Local Electrical Codes.

Material(s) Shall be RoHS Compliant

| HGP0030BW---- | | |
|----------------------------|---------------|---------------|
| Components | 0S0000/1S0000 | 0C0000/1C0000 |
| Line Reactor (LR) | X | X |
| Trap Reactor (TR) | X | X |
| Capacitor (Cap) | X | X |
| Trap Fusing, FU1, FU2, FU3 | X | X |
| Contactor (CNT) | | X |
| Transformer (XFMR) | | X |
| XFMR Fusing, FU4, FU5 | | X |

TCl, LLC CLAIMS PROPRIETARY RIGHTS IN THE MATERIAL HEREIN DISCLOSED. IT IS SUPPLIED WITHOUT PREJUDICE TO ANY PATENT RIGHTS OF TCl AND MAY NOT BE REPRODUCED OR USED TO MANUFACTURE ANYTHING SHOWN THEREIN WITHOUT WRITTEN PERMISSION FROM TCl.

| TOLERANCES (EXCEPT AS NOTED) | | | |
|------------------------------|--|--|------------|
| DECIMAL | | | |
| | | | .XX ± .25 |
| | | | .XXX ± .10 |
| FRACTIONAL | | | |
| | | | ± 1/16 |
| ANGULAR | | | |
| | | | ± 1° |

TCl W132 N10611 Grant Drive
 Germantown, WI 53022

HarmonicGuard Passive
 HGP, 30HP, 240/3/60, Open and Type 1

DRN BY: JNR DATE: 10/05/18 107902DG
 SCALE: 1/7 APRVD: SIZE: C SHT 1 OF 1