

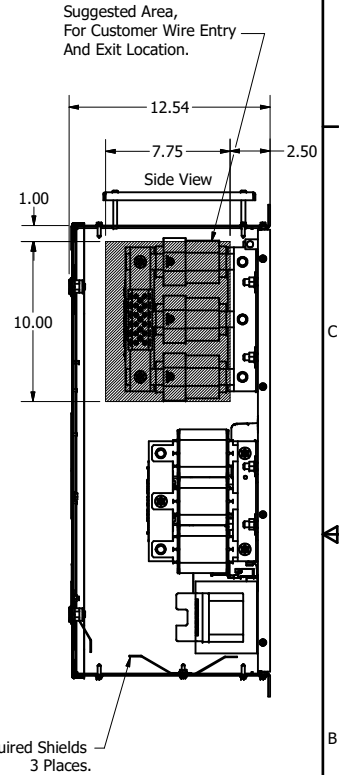
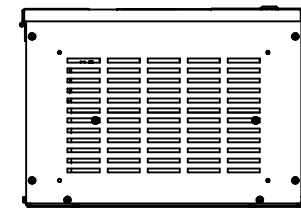
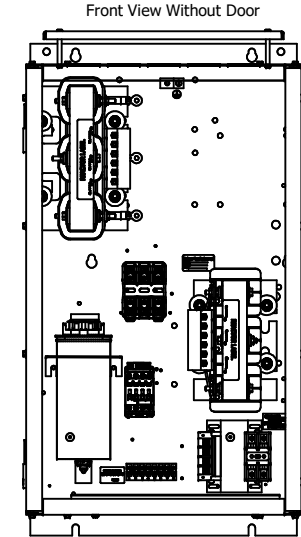
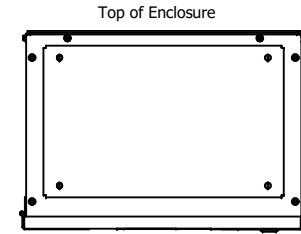
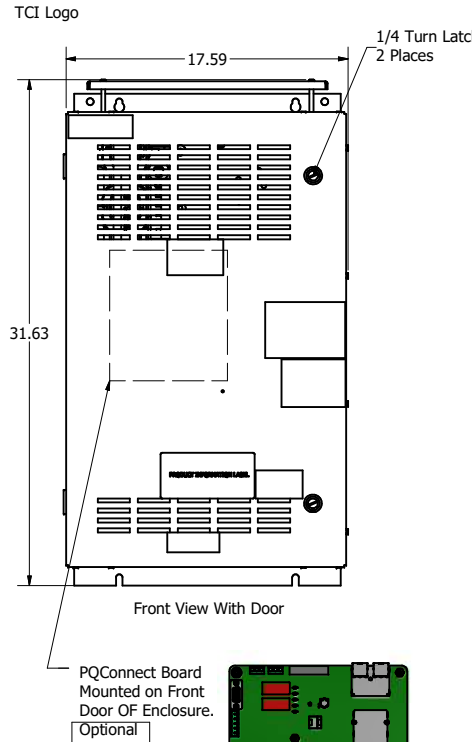
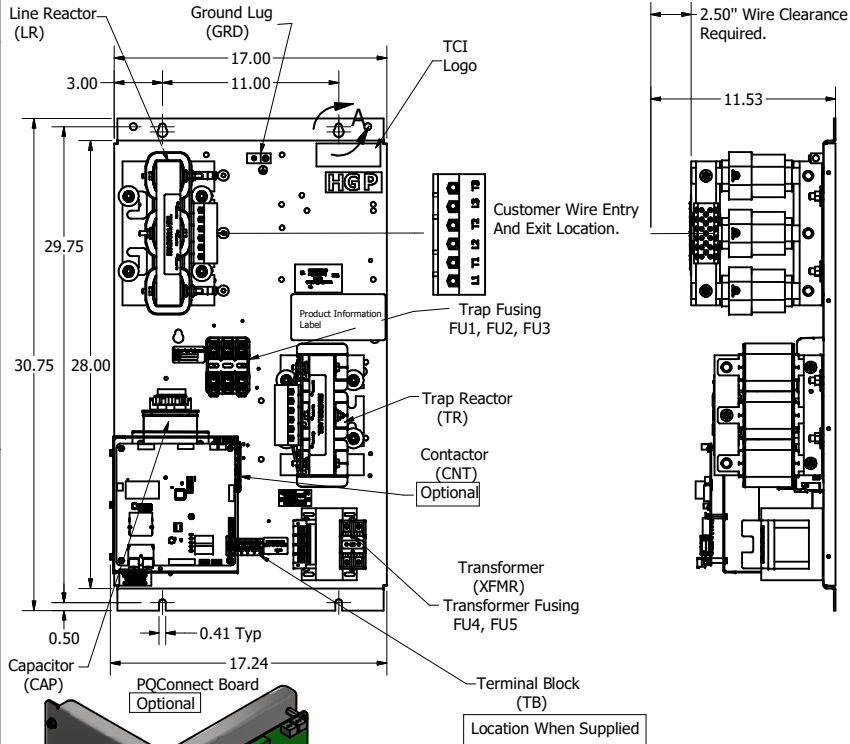
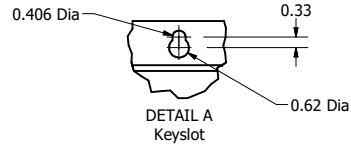
HGP Open Part Number	Schematic Drawing #	Approx Weight (LBS)
HGP0030AW0S0000	29597-S	81
HGP0030AW0C0000	29597	85
HGP0030AW0S1000	29597-PQ1	84
HGP0030AW0C1000	29597-PQ	88

HGP Part Number	HorsePower (HP)	Maximum Amps (A)	kVar	Harmonic	Voltage (V)	Hz.	Phase
HGP0030AW----	30	40	10	5th	480	60	3

HGP Enclosed Type 1 Part Number	Schematic Drawing #	Approx Weight (LBS)
HGP0030AW1S0000	29597-S	145
HGP0030AW1C0000	29597	150
HGP0030AW1S1000	29597-PQ1	146
HGP0030AW1C1000	29597-PQ	151

Note: For Torque Information See IOM Manual  
Customer Connections.  
L1, T1, L2, T2, L3, T3  
Wire Range: 1 AWG to 22 AWG.

Ground Lug  
Wire Range: 1/0 to 14 AWG.



Note: Customer is responsible for proper cooling of filter components on open panels. Capacitors Maximum Ambient 50°C.

Customer Is Responsible For Installation to Meet All National And Local Electrical Codes.

Material(s) Shall be RoHS Compliant

THE INFORMATION AND DESIGNS CONTAINED IN THIS DRAWING ARE CONFIDENTIAL AND THE PROPRIETARY PROPERTY OF ALLIED MOTION TECHNOLOGIES INC. AND ITS SUBSIDIARIES. NEITHER THIS DESIGN NOR ANY INFORMATION CONTAINED IN THIS DRAWING MAY BE REPRODUCED OR DISCLOSED TO OTHERS WITHOUT THE EXPRESS WRITTEN CONSENT OF ALLIED MOTION TECHNOLOGIES INC. AND ITS SUBSIDIARIES.

NO	REVISION	DATE	BY
E	5662, ASC to Vishay Cap	7/16/2021	DSW
D	4760, Add Harness Package	5/24/19	DSW
C	PQConnect Board Added.	6/14/18	DSW

TOLERANCES (EXCEPT AS NOTED)	
DECIMAL	.XX ± .25 .XXX ± .10
FRACTIONAL	± 1/16
ANGULAR	± 1°

**TCI** W132N10611 Grant Drive  
Germanstown, WI 53022  
© 2021 TCI, LLC  
An Official Motion Company  
HarmonicGuard Passive, HGP0030AW----  
HGP, 30HP, 480/3/60, Open and Type 1.  
DWN BY: DSW DATE: 10/31/13 FILE: 105482DG  
SCALE: 1/8 DRAWN BY: CSE SHEET 1 OF 1