

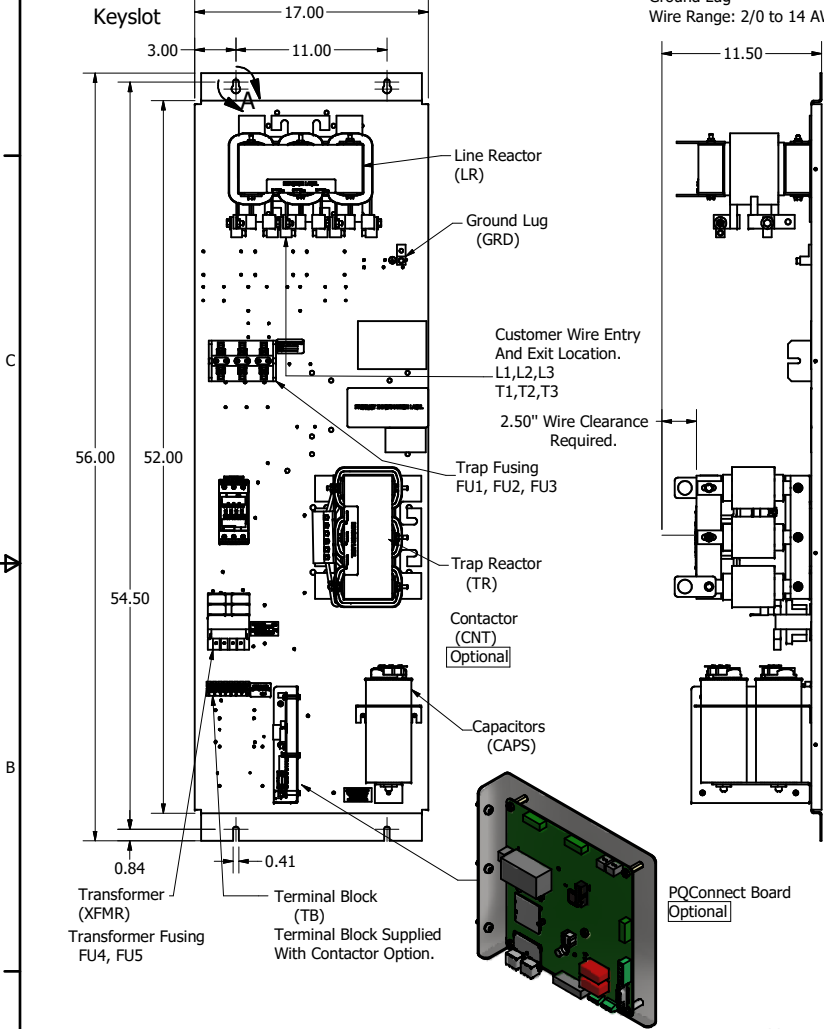
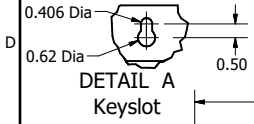
HGP Open Part Number	Schematic Drawing #	Approx Weight (LBS)
HGP0025DW0S0000	28697-208S	200
HGP0025DW0C0000	28697-208	205
HGP0025DW0S1000	28697-DWPQ1	202
HGP0025DW0C1000	28697-DWPQ	207

HGP Part Number	HorsePower (HP)	kVar	Harmonic	Voltage (V)	Hz.	Phase
HGP0025DW----	25	5.7	5th	208	60	3

HGP Enclosed Type 1 Part Number	Schematic Drawing #	Approx Weight (LBS)
HGP0025DW1S0000	28697-208S	295
HGP0025DW1C0000	28697-208	300
HGP0025DW1S1000	28697-DWPQ1	296
HGP0025DW1C1000	28697-DWPQ	301

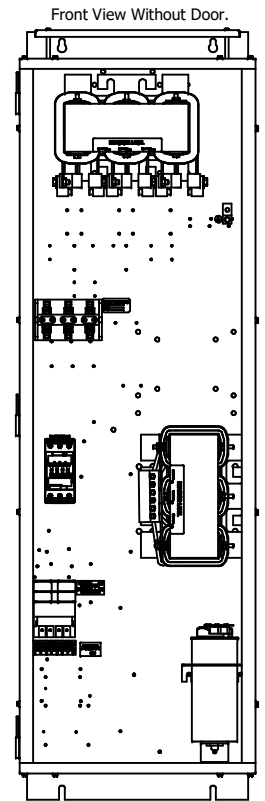
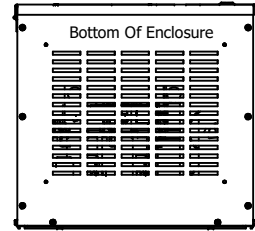
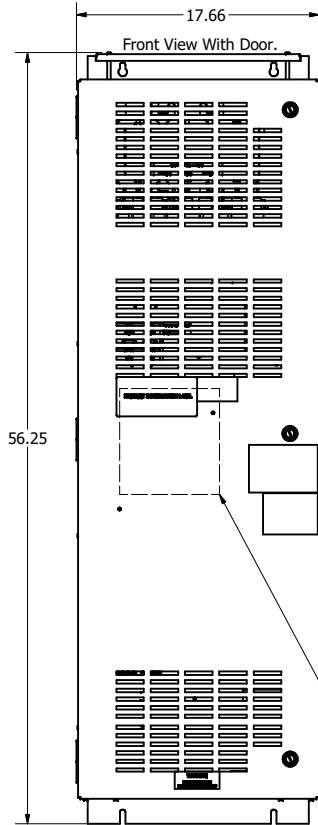
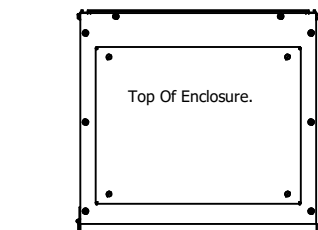
Note: For Torque Information See IOM Manual.
Customer Connections. L1, L2, L3, T1, T2, T3
Wire Range: 2/0 AWG to 14AWG.

Ground Lug
Wire Range: 2/0 to 14 AWG.

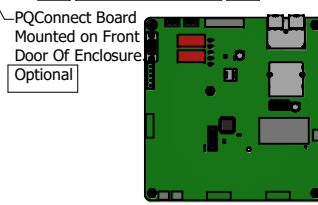


Note: Customer is responsible for proper cooling of filter components on open panels. Capacitors Maximum Ambient 50°C

HGP0025DW----				
Components	0S0000/1S0000	0C0000/1C0000	0S1000/1S1000	0C1000/1C1000
Line Reactor (LR)	X	X	X	X
Trap Reactor (TR)	X	X	X	X
Capacitor (Cap)	X	X	X	X
Trap Fusing, FU1, FU2, FU3	X	X	X	X
Contactor (CNT)		X		X
Transformer (XFMR)	X	X	X	X
XFMR Fusing, FU4, FU5		X	X	X
PQConnect Board			X	X



Suggested Area, For Customer Wire Entry And Exit Location.



Customer Is Responsible For Installation to Meet All National And Local Electrical Codes.

THE INFORMATION AND DESIGNS CONTAINED IN THIS DRAWING ARE CONFIDENTIAL AND THE PROPRIETARY PROPERTY OF ALLIED MOTION TECHNOLOGIES INC. AND ITS SUBSIDIARIES. NEITHER THIS DESIGN NOR ANY INFORMATION CONTAINED IN THIS DRAWING MAY BE REPRODUCED OR DISCLOSED TO OTHERS WITHOUT THE EXPRESS WRITTEN CONSENT OF ALLIED MOTION TECHNOLOGIES INC. AND ITS SUBSIDIARIES.

NO	REVISION	DATE	BY
1	As Designed	06/10/21	JRN

TOLERANCES (EXCEPT AS NOTED)
DECIMAL
.XX ± .25
.XXX ± .10
FRACTIONAL
± 1/32
ANGULAR
± 1°

TCL W132N10611 (Rev 13) 5/6
Germantown, WI 53022
© 2023 TCL, LLC
Harmonic Guard Passive
HGP, 25HP, 208/3/60, Open and Type 1
DWN BY: JRN DATE: 06/10/21 108967DG
SCALE: 1/6 DRAWN: JRN
SHT 1 OF 1