

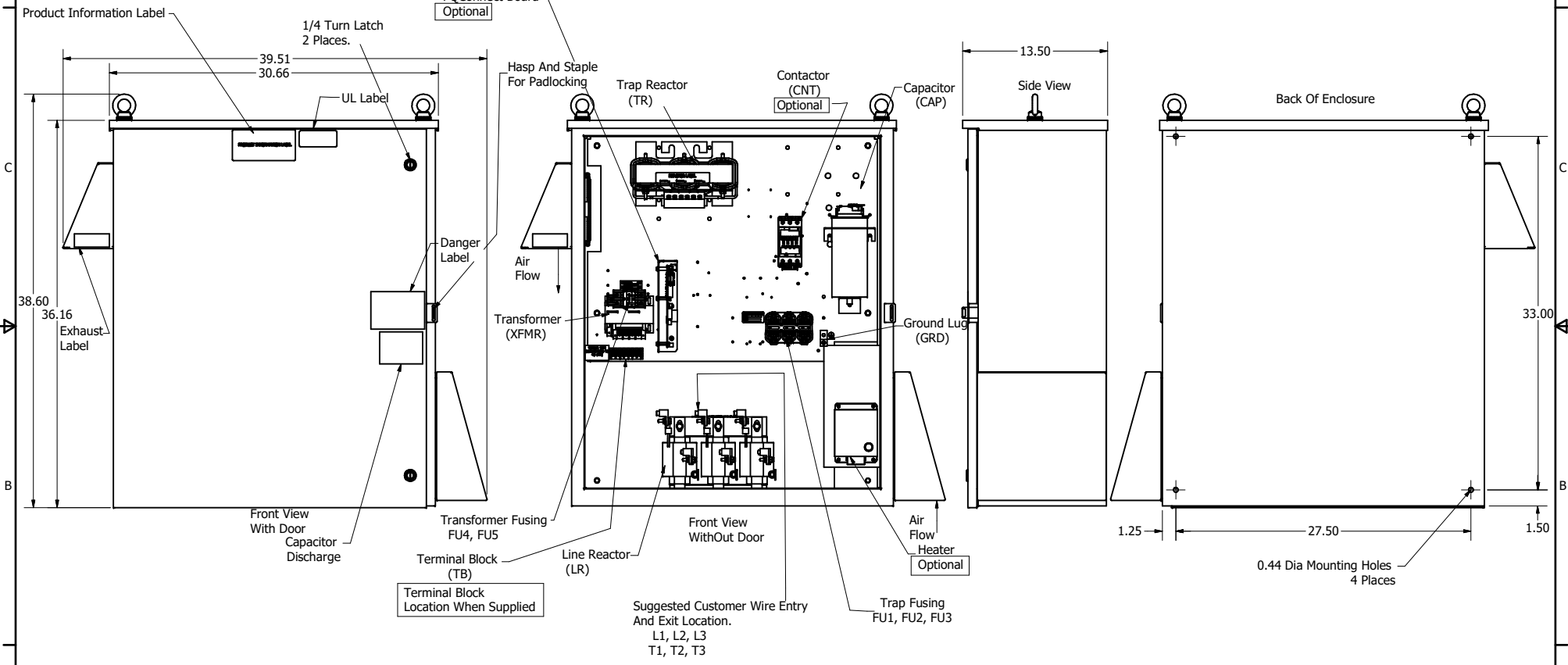
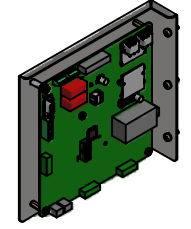
HGP Part Number	HorsePower (HP)	kVar	Maximum Amps (A)	Harmonic	Voltage (V)	Hz.	Phase
HGP0025AW3----	25	6.3	68	5th	240	60	3

HGP Part Number	Schematic Drawing #	Approx Weight (LBS)
HGP0025AW3S0000	30209-1S	246
HGP0025AW3C0000	30209-1	248
HGP0025AW3C000H	30209-1H	252
HGP0025AW3C1000	30209-PQ	251
HGP0025AW3C100H	30209-PQH	255

Note: For Torque Information See IOM Manual

Customer Connections.
L1, L2, L3, T1, T2, T3
Wire Range: 2/0 AWG to 14AWG.

Ground Lug
Wire Range: 2/0 to 14 AWG.



HGP0025BW3----					
Components	S0000	C0000	C000H	C1000	C100H
Line Reactor (LR)	x	x	x	X	X
Trap Reactor (TR)	x	x	x	X	X
Capacitor (Cap)	x	x	x	X	X
Trap Fusing, FU1, FU2, FU3	x	x	x	X	X
Contactor (CNT)		x	x	X	X
Transformer (XFMR)	x	x	x	X	X
XFMR Fusing, FU4, FU5	x	x	x	X	X
Heater			x		X
PQConnect Board				X	X

NOTE: USE ONLY HUBS OR FITTINGS THAT COMPLY WITH UL514B FOR TYPE 3R ENCLOSURES

Customer Is Responsible For Installation to Meet All National And Local Electrical Codes.

Material(s) Shall be RoHS Compliant

THE INFORMATION AND DESIGNS CONTAINED IN THIS DRAWING ARE CONFIDENTIAL AND THE PROPRIETARY PROPERTY OF ALLIED MOTION TECHNOLOGIES INC. AND ITS SUBSIDIARIES. NEITHER THIS DESIGN NOR ANY INFORMATION CONTAINED IN THIS DRAWING MAY BE REPRODUCED OR DISCLOSED TO OTHERS WITHOUT THE EXPRESS WRITTEN CONSENT OF ALLIED MOTION TECHNOLOGIES INC. AND ITS SUBSIDIARIES.				TOLERANCES (EXCEPT AS NOTED) DECIMAL .XX ± .25 .XXX ± .10 FRACTIONAL ± 1/16 ANGLAR ± 1°				W182N10611 (Rev 13 Feb 2023) Germantown, WI 53022 © 2023 TCI, LLC TCI An Allied Motion Company Harmonic Guard Passive HGP_25HP_240/3/60_Type 3R 109462DG			
NO	AS DESIGNED	7/5/2023	DSW	NO	REVISION	DATE	BY	SCALE: 1/8	DATE: 7/5/2023	REVISED BY: C	SHEET 1 OF 1