

HGP Open Part Number	Schematic Drawing #	Approx Weight (LBS)
HGP0025AW0S0000	29597-S	63
HGP0025AW0C0000	29597	67
HGP0025AW0S1000	29597-PQ1	66
HGP0025AW0C1000	29597-PQ	70

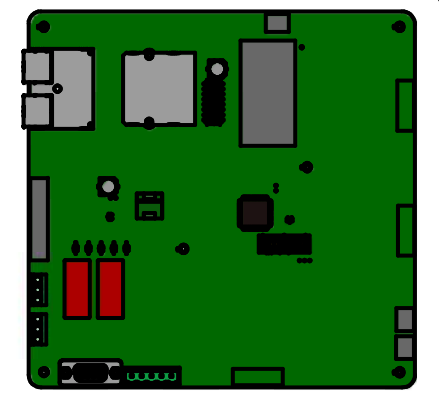
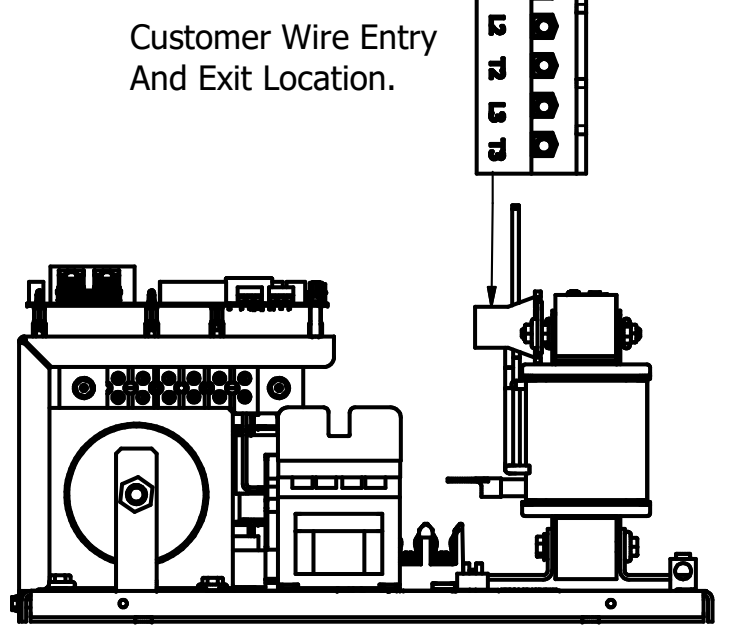
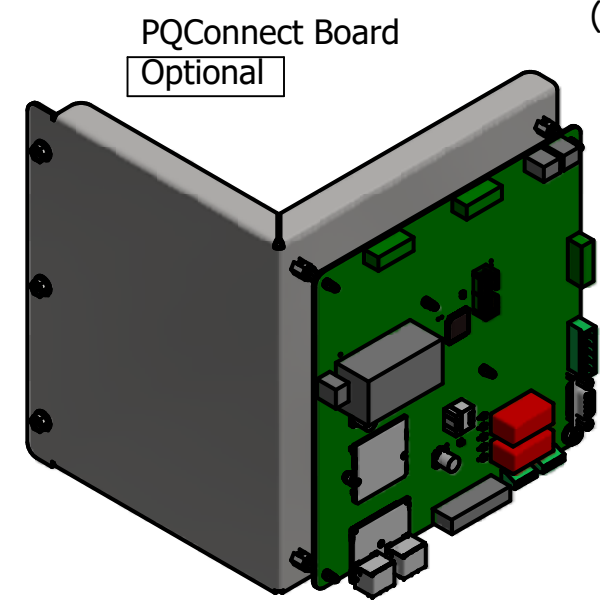
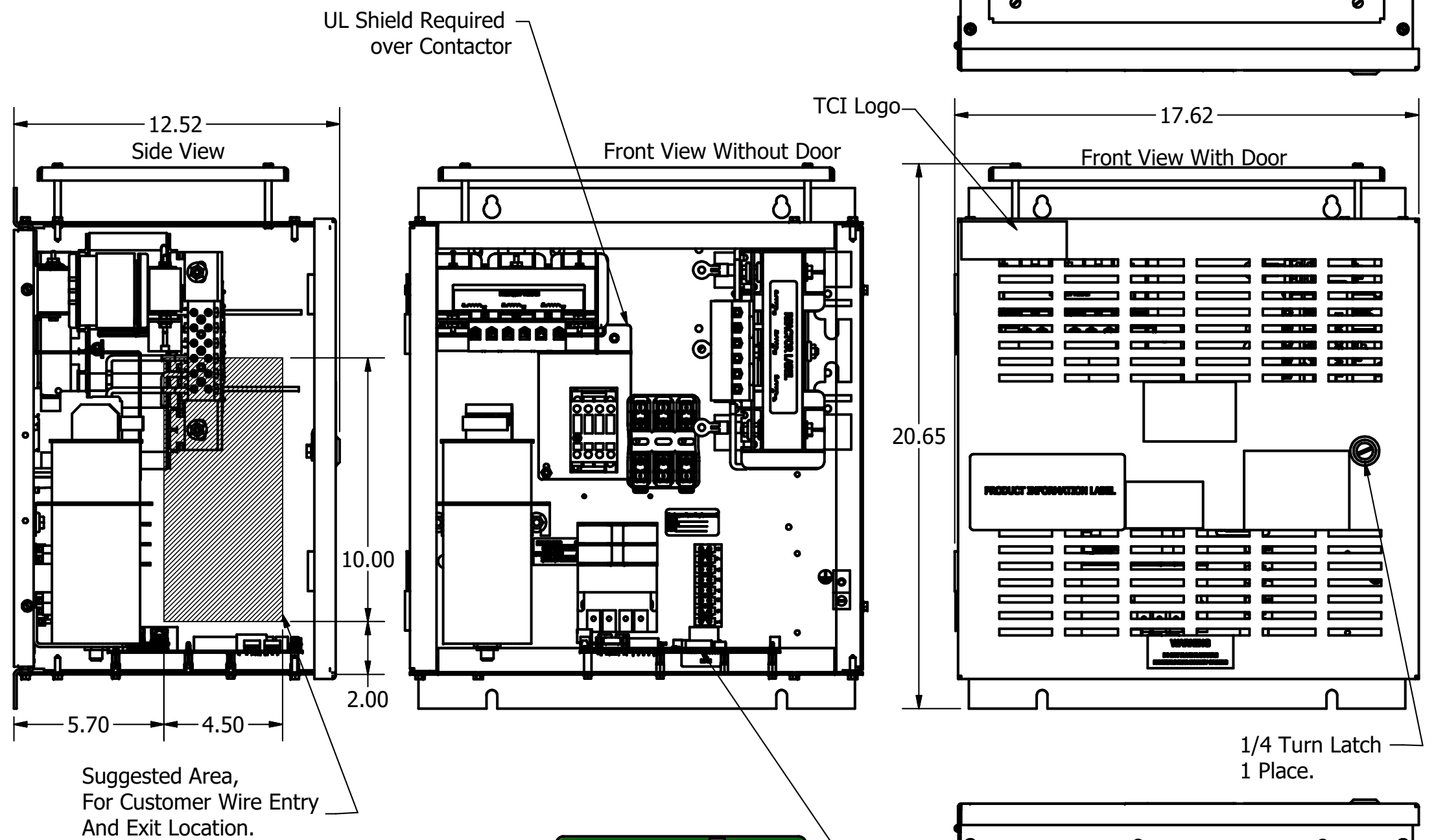
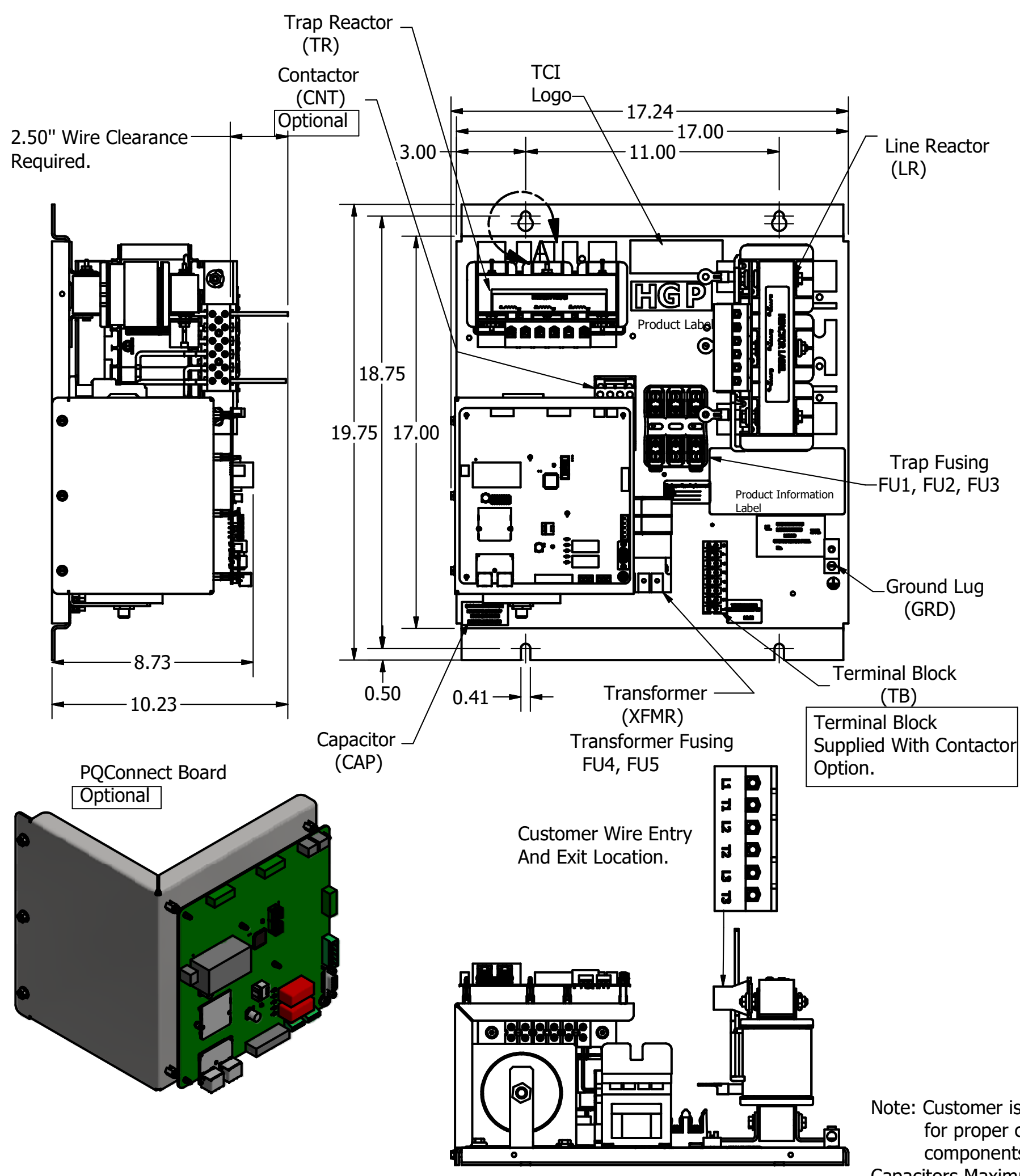
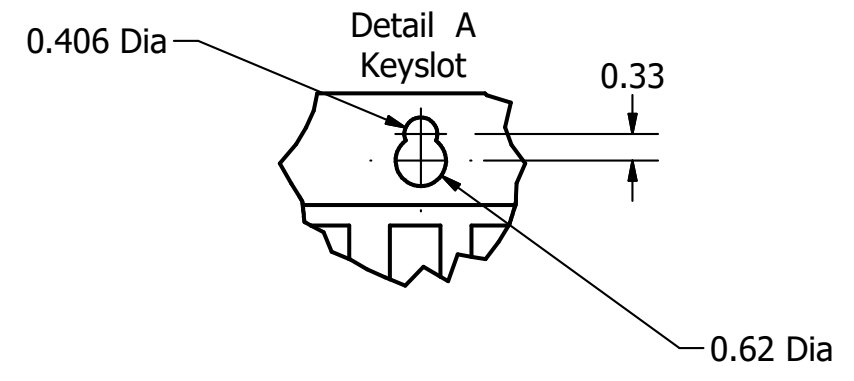
HGP Part Number	HorsePower (HP)	kVar	Harmonic	Voltage (V)	Hz.	Phase
HGP0025AW----	25	8	5th	480	60	3

HGP Eclosed Type 1 Part Number	Schematic Drawing #	Approx Weight (LBS)
HGP0025AW1S0000	29597-S	88
HGP0025AW1C0000	29597	92
HGP0025AW1S1000	29597-PQ1	90
HGP0025AW1C1000	29597-PQ	94

Note: For Torque Information See IOM Manual

Customer Connections.
L1, T1, L2, T2, L3, T3
Wire Range: 1 AWG to 22 AWG.

Ground Lug
Wire Range: 1/0 to 14 AWG.



Note: Customer is responsible for proper cooling of filter components on open panels.
Capacitors Maximum Ambient 50°C.

Components	HGP0025AW----			
	0S0000/1S0000	0C0000/1C0000	0S1000/1S1000	0C1000/1C1000
Line Reactor (LR)	X	X	X	X
Trap Reactor (TR)	X	X	X	X
Capacitor (Cap)	X	X	X	X
Trap Fusing, FU1, FU2, FU3	X	X	X	X
Contactor (CNT)		X		X
Transformer (XFMR)	X	X	X	X
XFMR Fusing, FU4, FU5	X	X	X	X
PQConnect Board			X	X

Customer Is Responsible For Installation to Meet All National And Local Electrical Codes.

Material(s) Shall be RoHS Compliant

TCI, LLC CLAIMS PROPRIETARY RIGHTS IN THE MATERIAL HEREIN DISCLOSED. IT IS SUPPLIED WITHOUT PREJUDICE TO ANY PATENT RIGHTS OF TCI AND MAY NOT BE REPRODUCED OR USED TO MANUFACTURE ANYTHING SHOWN THEREIN WITHOUT WRITTEN PERMISSION FROM TCI.	DRN BY	DATE	BY	TOLERANCES (EXCEPT AS NOTED)	W132 N10611 Grant Drive Germantown, WI 53022 HarmonicGuard Passive HGP, 25HP, 480/3/60, Open and Type 1.	
	J	6/14/18	DSW	DECIMAL		
	NO	REVISION	DATE	BY		FRACTIONAL
						ANGULAR
				± 0.25 .XXX ± .10 ± 1/16 ± 1°	DRN BY: DSW DATE: 11/1/13 SCALE: 1/8 APRVD: [Signature] SIZE: C 105481DG SHT 1 OF 1	