

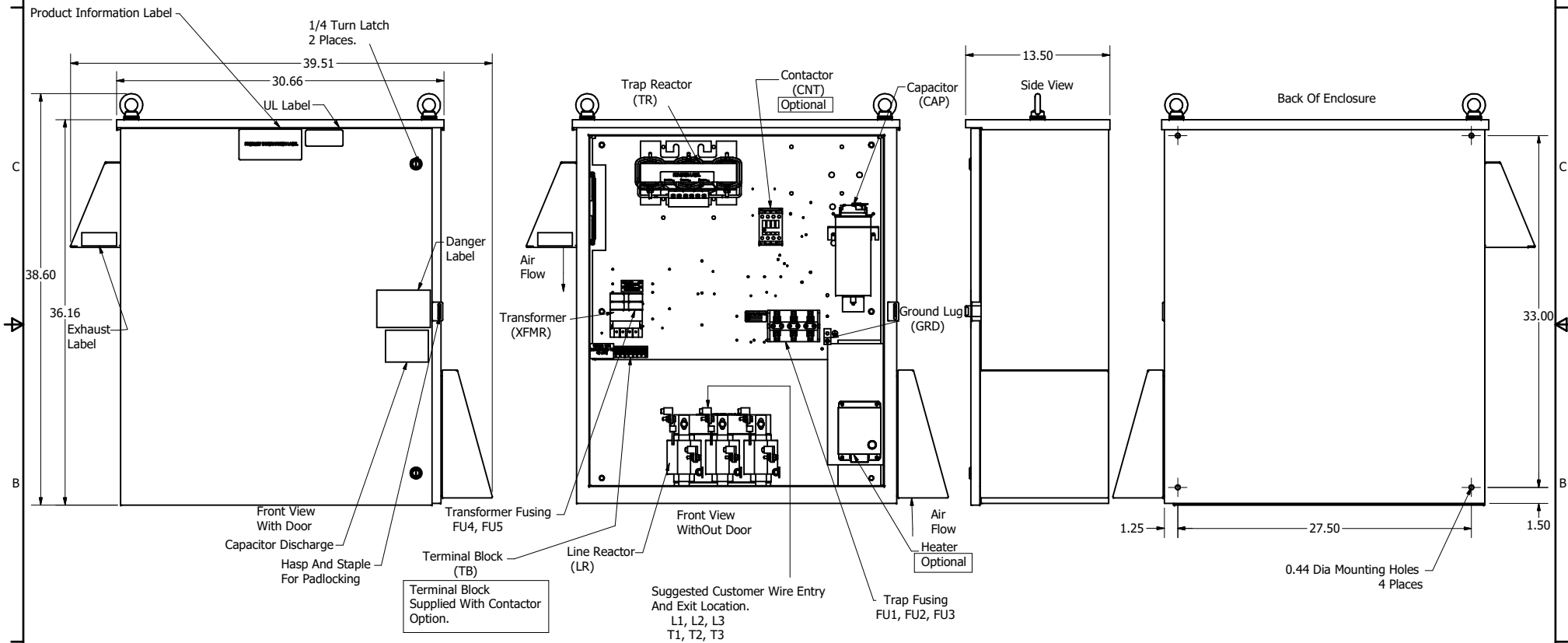
HGP Part Number	HorsePower (HP)	kVar	Harmonic	Voltage (V)	Hz.	Phase
HGP0020DW3----	20	25	5th	208	60	3

Note: For Torque Information
See IOM Manual

HGP Part Number	Schematic Drawing #	Approx Weight (LBS)
HGP0020DW3S0000	28697-208-2S	246
HGP0020DW3C0000	28697-208-2	248
HGP0020DW3C000H	28697-208-2H	252

Customer Connections.
L1, L2, L3, T1, T2, T3
Wire Range: 2/0 AWG to 14AWG.

Ground Lug
Wire Range: 2/0 to 14 AWG.




HGP0020DW3----			
Components	S0000	C0000	C000H
Line Reactor (LR)	x	x	x
Trap Reactor (TR)	x	x	x
Capacitor (Cap)	x	x	x
Trap Fusing, FU1, FU2, FU3	x	x	x
Contactor (CNT)		x	x
Transformer (XFMR)	x	x	x
XFMR Fusing, FU4, FU5	x	x	x
Heater			x

NOTE: USE ONLY HUBS OR FITTINGS THAT COMPLY WITH UL514B FOR TYPE 3R ENCLOSURES

Customer Is Responsible For Installation to Meet All National And Local Electrical Codes.

Material(s) Shall be RoHS Compliant

THE INFORMATION AND DESIGNS CONTAINED IN THIS DRAWING ARE CONFIDENTIAL AND THE PROPRIETARY PROPERTY OF ALLIED MOTION TECHNOLOGIES INC. AND ITS SUBSIDIARIES. NEITHER THIS DESIGN NOR ANY INFORMATION CONTAINED IN THIS DRAWING MAY BE REPRODUCED OR DISCLOSED TO OTHERS WITHOUT THE EXPRESS WRITTEN CONSENT OF ALLIED MOTION TECHNOLOGIES INC. AND ITS SUBSIDIARIES.	TOLERANCES (EXCEPT AS NOTED)		 W182N10611 (Rev 1) 11/15/2022 © 2023 TCI, LLC Harmonic Guard Passive HGP, 20HP, 208/3/60, Type 3R 108264DG					
	DECIMAL							
	.XX ± .25 .XXX ± .10							
	FRACTIONAL							
B	5265, Enclosure Updated	8/6/2020	DSW	± 1/32	DRN BY	DATE	08/06/19	108264DG
A	As Designed	08/06/19	JRN	ANGULAR	SCALE	1/8	DRN BY	DATE
NO	REVISION	DATE	BY	± 1°	SCALE	1/8	DRN BY	DATE