

HGP Open Part Number	Schematic Drawing #	Approx Weight (LBS)
HGP0020BW0S0000	30209-S	135
HGP0020BW0C0000	30209	140

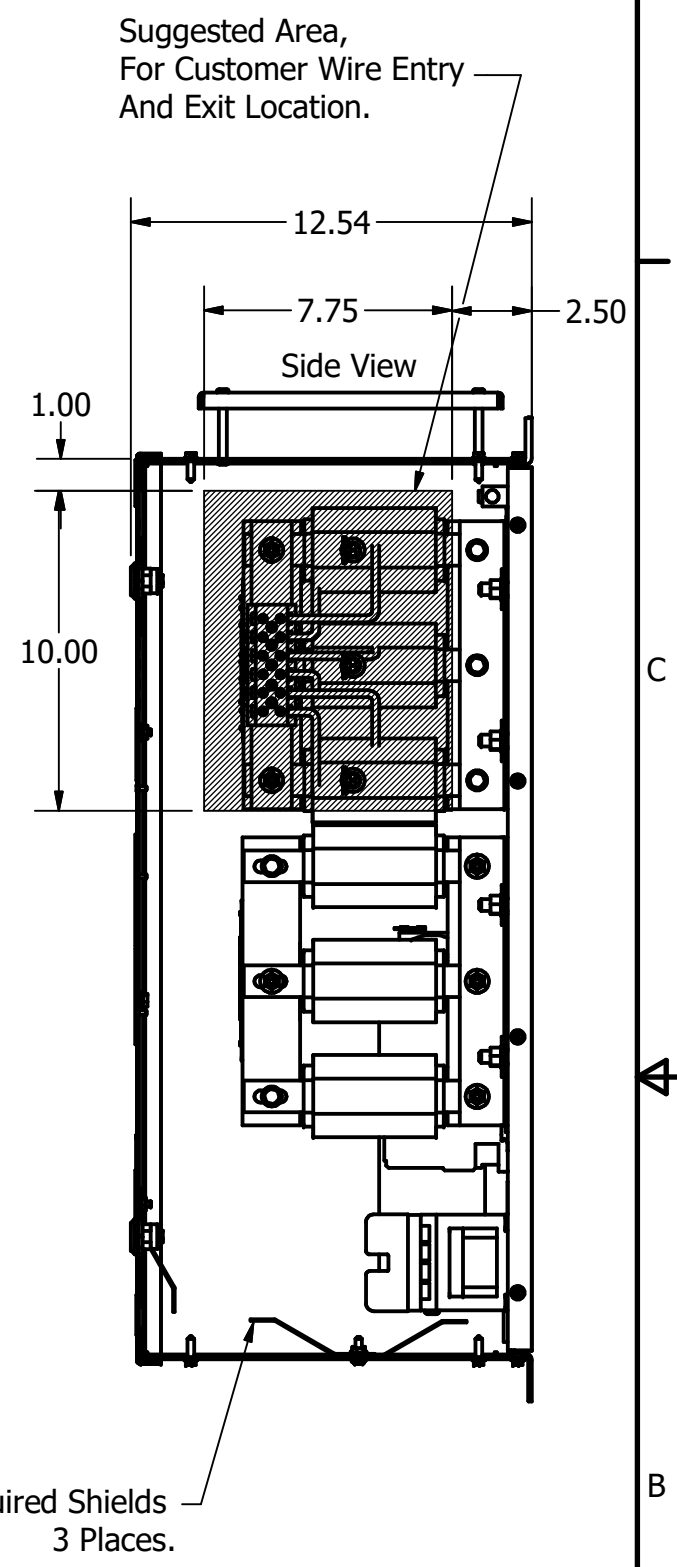
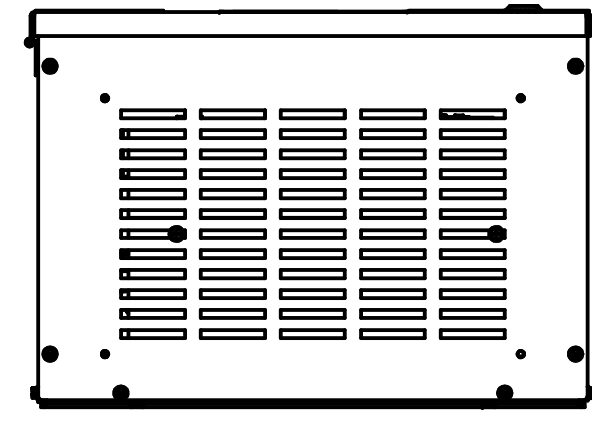
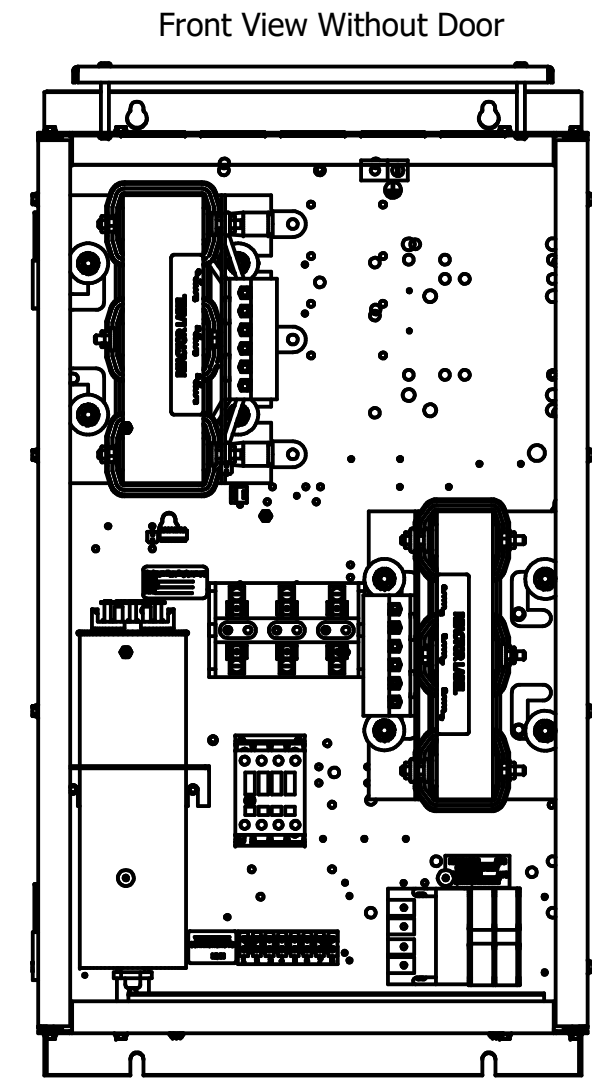
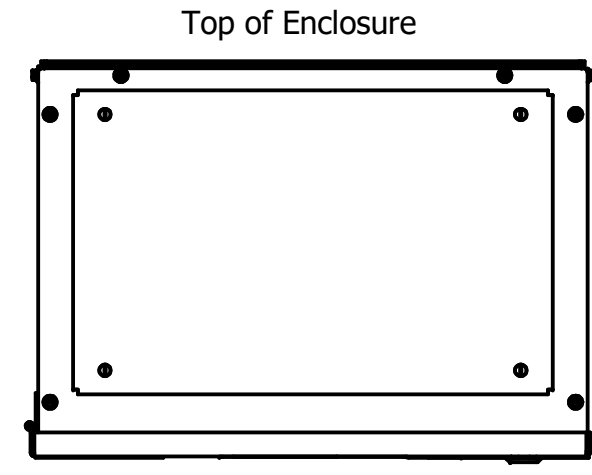
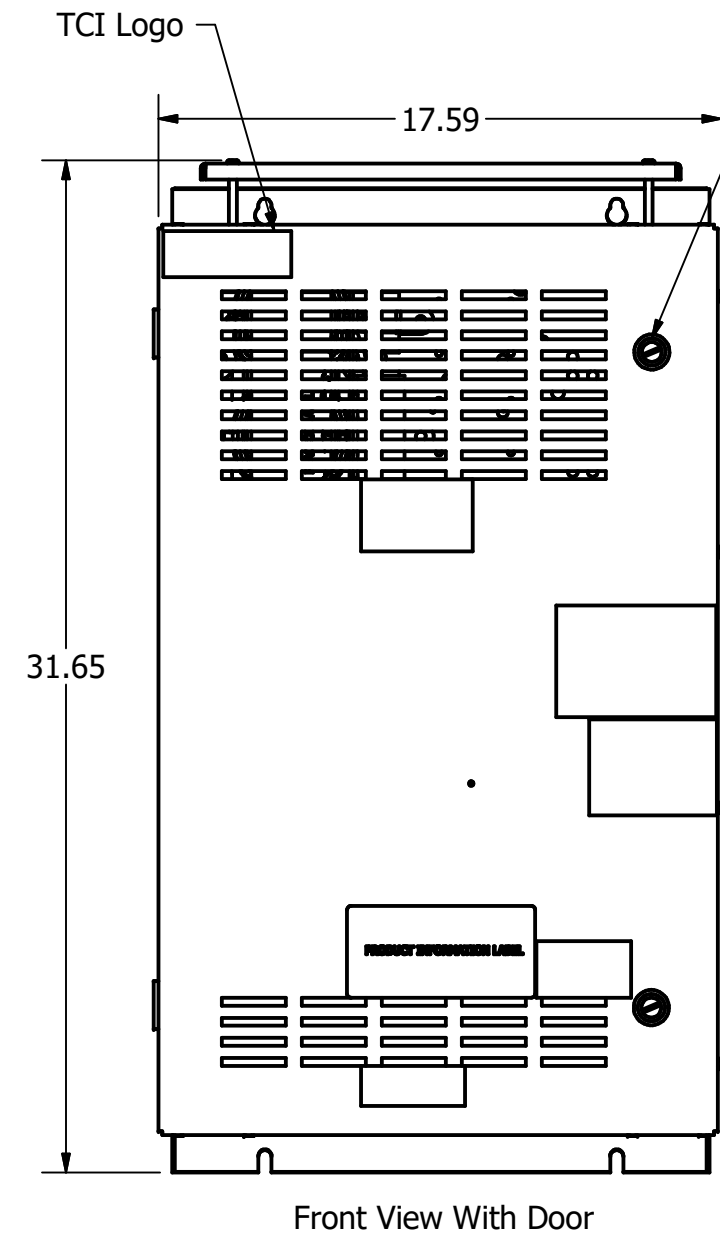
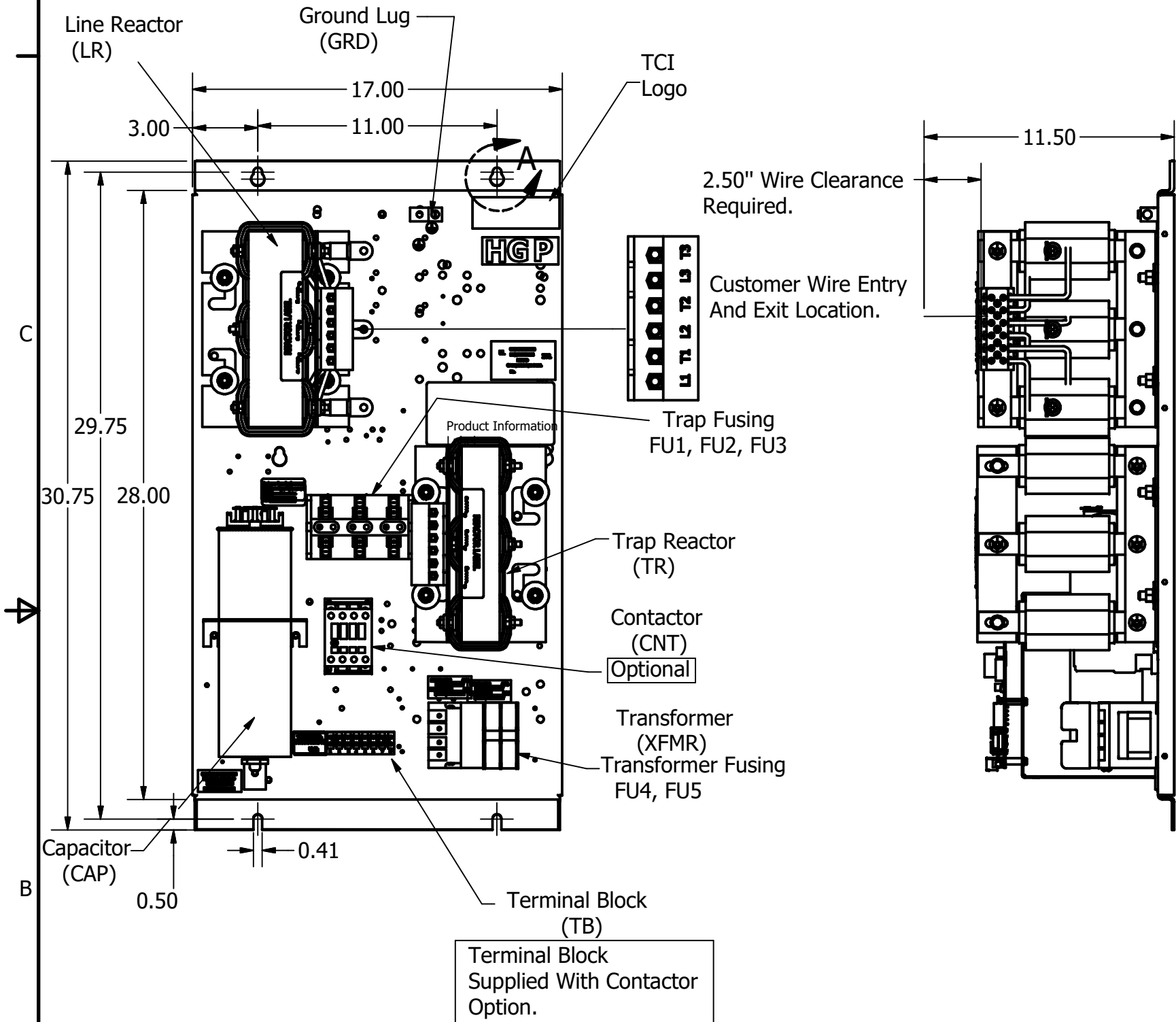
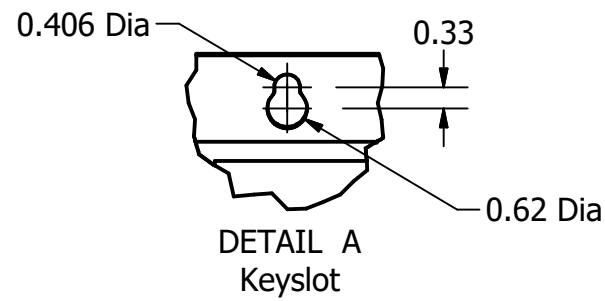
HGP Part Number	HorsePower (HP)	kVar	Harmonic	Voltage (V)	Hz.	Phase
HGP0020BW----	20	5	5th	240	60	3

HGP Eclosed Type 1 Part Number	Schematic Drawing #	Approx Weight (LBS)
HGP0020BW1S0000	30209-S	200
HGP0020BW1C0000	30209	205

Note: For Torque Information
See IOM Manual

Customer Connections.
L1, T1, L2, T2, L3, T3
Wire Range: 1 AWG to 22 AWG.

Ground Lug
Wire Range: 1/0 to 14 AWG.



Note: Customer is responsible for proper cooling of filter components on open panels. Capacitors Maximum Ambient 50°C.

Customer Is Responsible For Installation to Meet All National And Local Electrical Codes.

Material(s) Shall be RoHS Compliant

HGP0020BW----		
Components	0S0000/1S0000	0C0000/1C0000
Line Reactor (LR)	X	X
Trap Reactor (TR)	X	X
Capacitor (Cap)	X	X
Trap Fusing, FU1, FU2, FU3	X	X
Contactor (CNT)		X
Transformer (XFMR)		X
XFMR Fusing, FU4, FU5		X

<p>TCI, LLC CLAIMS PROPRIETARY RIGHTS IN THE MATERIAL HEREIN DISCLOSED. IT IS SUPPLIED WITHOUT PREJUDICE TO ANY PATENT RIGHTS OF TCI AND MAY NOT BE REPRODUCED OR USED TO MANUFACTURE ANYTHING SHOWN THEREIN WITHOUT WRITTEN PERMISSION FROM TCI.</p>	As Designed	08/28/19	JRN	TOLERANCES (EXCEPT AS NOTED)	<p>TCI W132 N10611 Grant Drive Germantown, WI 53022</p> <p>HarmonicGuard Passive HGP, 20HP, 240/3/60, Open and Type 1.</p>
	REVISION	DATE	BY	DECIMAL	
				.XX ± .25	
				.XXX ± .10	
				FRACTIONAL	DRN BY: JRN
				± 1/16	DATE: 08/28/19
				ANGULAR	108298DG
				± 1°	SCALE: 1/8
					SIZE: C
					SHT 1 OF 1