

HGP Open Part Number	Schematic Drawing #	Approx Weight (LBS)
HGP0010AW0S0000	29597-TS	41
HGP0010AW0C0000	29597-T	45
HGP0010AW0S1000	29597-PQ3	44
HGP0010 AW0C1000	29597-PQ2	48

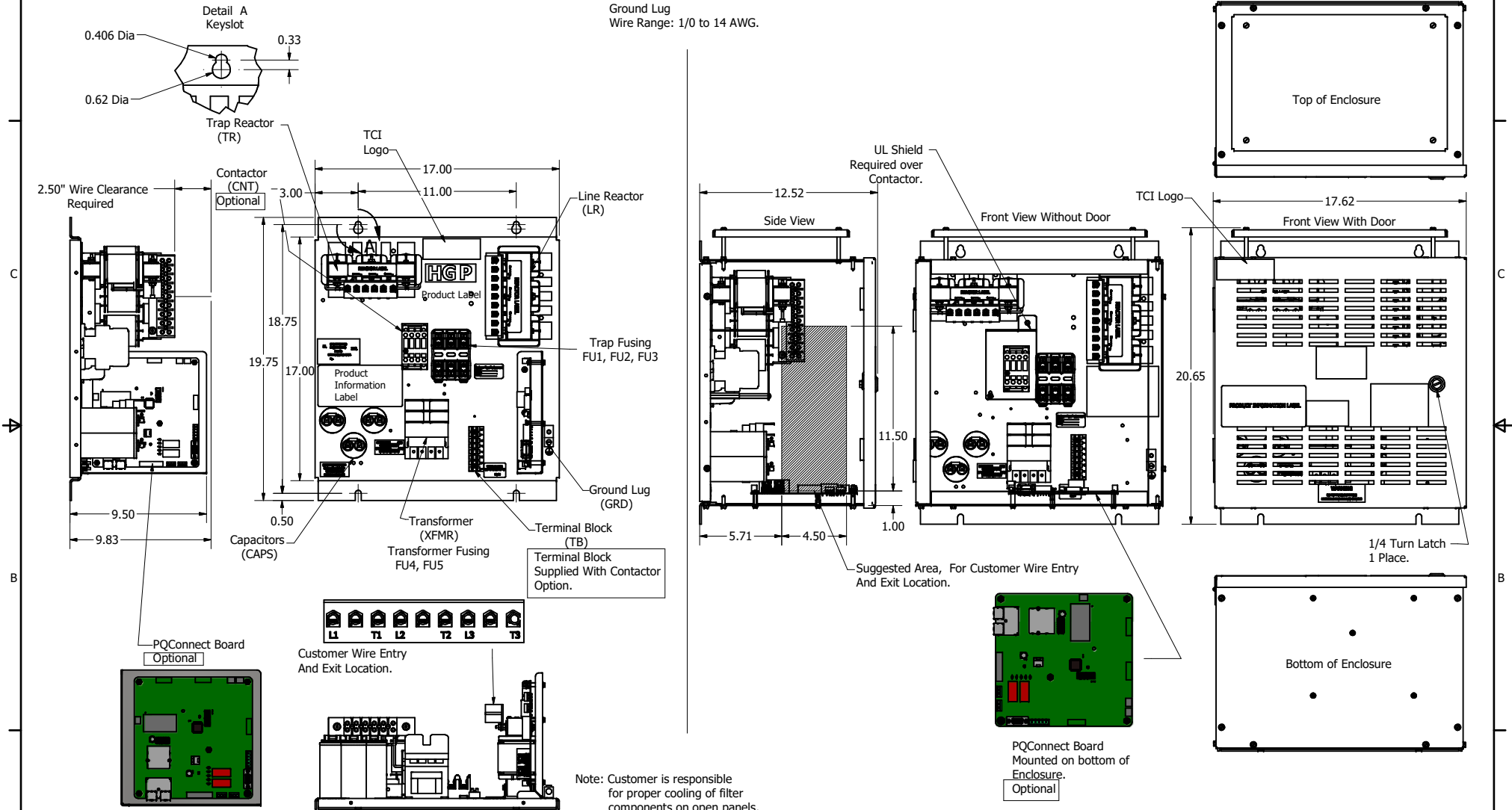
HGP Part Number	HorsePower (HP)	kVar	Harmonic	Voltage (V)	Maximum Amps (A)	Hz.	Phase
HGP0010AW----	10	3	5th	480	14	60	3

HGP Eclosed Type 1 Part Number	Schematic Drawing #	Approx Weight (LBS)
HGP0010AW1S0000	29597-TS	66
HGP0010AW1C0000	29597-T	70
HGP0010AW1S1000	29597-PQ3	68
HGP0010AW1C1000	29597-PQ2	72

Note: For Torque Information See IOM Manual

Customer Connections.  
L1, T1, L2, T2, L3, T3  
Wire Range: 18 AWG to 4 AWG.

Ground Lug  
Wire Range: 1/0 to 14 AWG.



Note: Customer is responsible for proper cooling of filter components on open panels. Capacitors Maximum Ambient 50°C.

HGP0010AW----				
Components	0S0000/1S0000	0C0000/1C0000	0S1000/1S1000	0C1000/1C1000
Line Reactor (LR)	X	X	X	X
Trap Reactor (TR)	X	X	X	X
Capacitor (Cap)	X	X	X	X
Trap Fusing, FU1, FU2, FU3	X	X	X	X
Contactor (CNT)		X		X
Transformer (XFMR)		X	X	X
XFMR Fusing, FU4, FU5		X	X	X
PQConnect Board			X	X

Customer Is Responsible For Installation to Meet All National And Local Electrical Codes.

Material(s) Shall be RoHS Compliant

THE INFORMATION AND DESIGNS CONTAINED IN THIS DRAWING ARE CONFIDENTIAL AND THE PROPRIETARY PROPERTY OF ALLIED MOTION TECHNOLOGIES INC. AND ITS SUBSIDIARIES. NEITHER THIS DESIGN NOR ANY INFORMATION CONTAINED IN THIS DRAWING MAY BE REPRODUCED OR DISCLOSED TO OTHERS WITHOUT THE EXPRESS WRITTEN CONSENT OF ALLIED MOTION TECHNOLOGIES INC. AND ITS SUBSIDIARIES.				TOLERANCES (EXCEPT AS NOTED) DECIMAL .XX ± .25 .XXX ± .10	<p>W132N10611 Grant Drive Germanstown, WI 53022 © 2021 TCI, LLC An Allied Motion Company Harmonic Guard Passive HGP, 10HP, 480/3/60, Open and Type 1</p>
	G	S180, Update XFMR Wiring	04/03/2020	JRN	
	F	S159, Update PQ Wiring	03/18/2020	JRN	
	E	PQconnect Added	6/14/2018	DSW	
	NO	REVISION	DATE	BY	

DRN BY: DSW DATE: 11/01/13  
SCALE: 1/8  
SHT 1 OF 1