

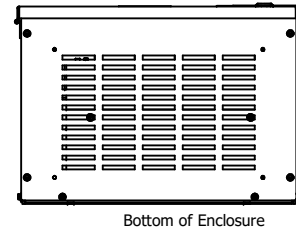
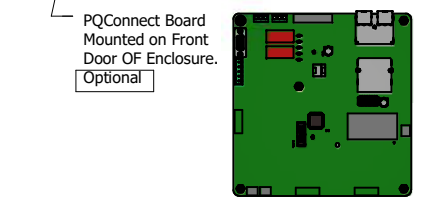
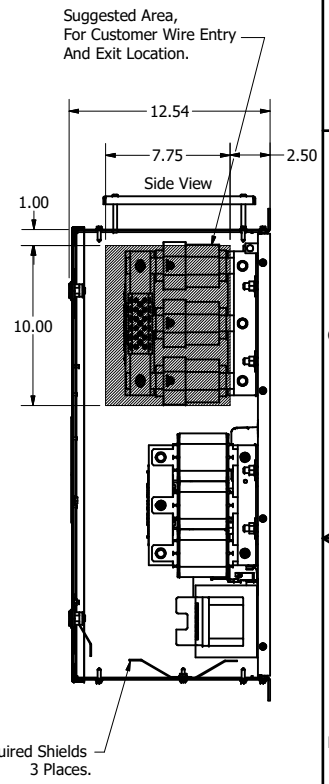
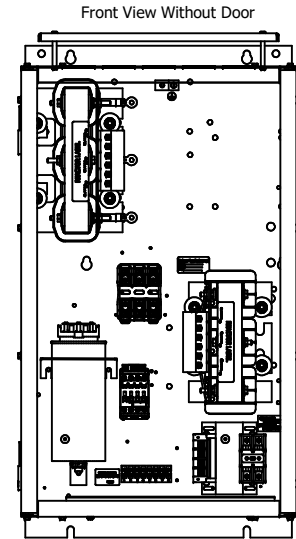
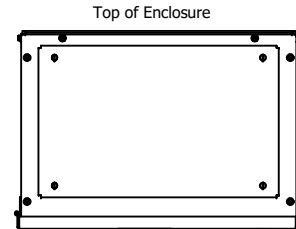
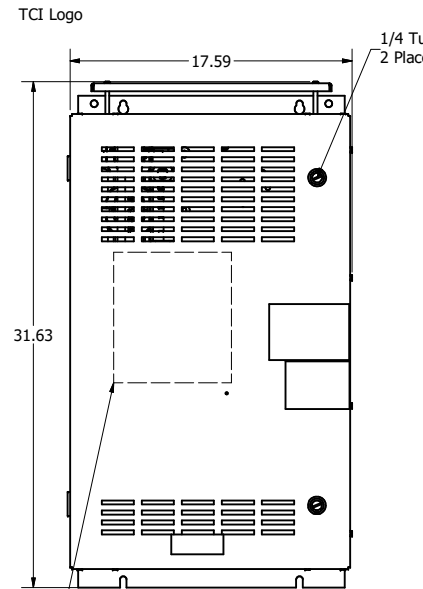
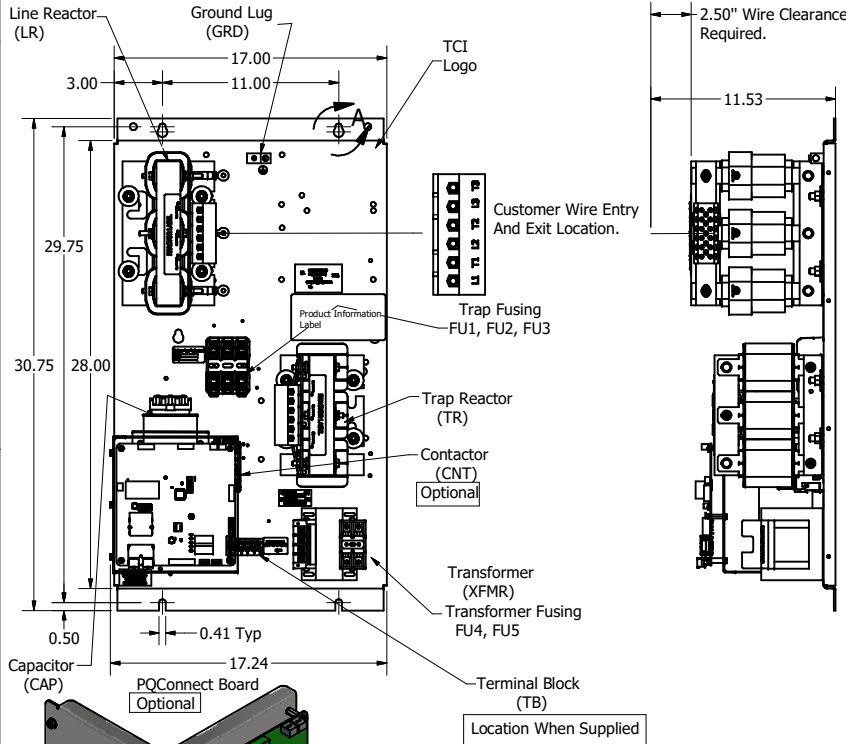
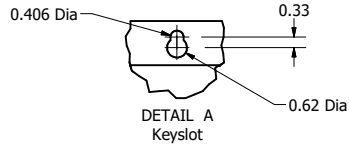
HGP Open Part Number	Schematic Drawing #	Approx Weight (LBS)
HGP0008DW0S0000	28697-208S	81
HGP0008DW0C0000	28697-208	85
HGP0008DW0S1000	28697-DWPQ1	84
HGP0008DW0C1000	28697-DWPQ	88

HGP Part Number	HorsePower (HP)	Max Amps (A)	kVar	Harmonic	Voltage (V)	Hz.	Phase
HGP0030AW----	7.5	24	1.9	5th	208	60	3

HGP Enclosed Type 1 Part Number	Schematic Drawing #	Approx Weight (LBS)
HGP0008DW1S0000	28697-208S	145
HGP0008DW1C0000	28697-208	150
HGP0008DW1S1000	28697-DWPQ1	146
HGP0008DW1C1000	28697-DWPQ	151

Note: For Torque Information
See IOM Manual
Customer Connections.
L1, T1, L2, T2, L3, T3
Wire Range: 1 AWG to 22 AWG.

Ground Lug
Wire Range: 1/0 to 14 AWG.



Note: Customer is responsible for proper cooling of filter components on open panels. Capacitors Maximum Ambient 50°C.

Customer Is Responsible For Installation to Meet All National And Local Electrical Codes.

THE INFORMATION AND DESIGNS CONTAINED IN THIS DRAWING ARE CONFIDENTIAL AND THE PROPRIETARY PROPERTY OF ALLIED MOTION TECHNOLOGIES INC. AND ITS SUBSIDIARIES. NEITHER THIS DESIGN NOR ANY INFORMATION CONTAINED IN THIS DRAWING MAY BE REPRODUCED OR DISCLOSED TO OTHERS WITHOUT THE EXPRESS WRITTEN CONSENT OF ALLIED MOTION TECHNOLOGIES INC. AND ITS SUBSIDIARIES.				TOLERANCES (EXCEPT AS NOTED) DECIMAL .XX ± .25 .XXX ± .10 FRACTIONAL ± 1/32 ANGULAR ± 1°				W132N10611 (Rev 1) 5/16 Germantown, WI 53022 © 2023 TCI, LLC An Official Motion Guard Company HarmonicGuard Passive, HGP0008DW---- HGP, 7.5HP, 208/3/60, Open and Type 1.	
C	PQConnect Board Added.	05/28/21	JRN	DATE	BY	DATE	11/29/16	106780DG	
NO	REVISION	DATE	BY	SCALE: 1/8	DRWN: DSW	DATE: 11/29/16	REV: 1	106780DG	