

HGL Open Part Number	Schematic Drawing #	Approx Weight (LBS)
HGL0400CW0S0000	30807-1	494
HGL0400CW0C0000	30807	504
HGL0400CW0S1000	30807-PQ1	495
HGL0400CW0C1000	30807-PQ	505

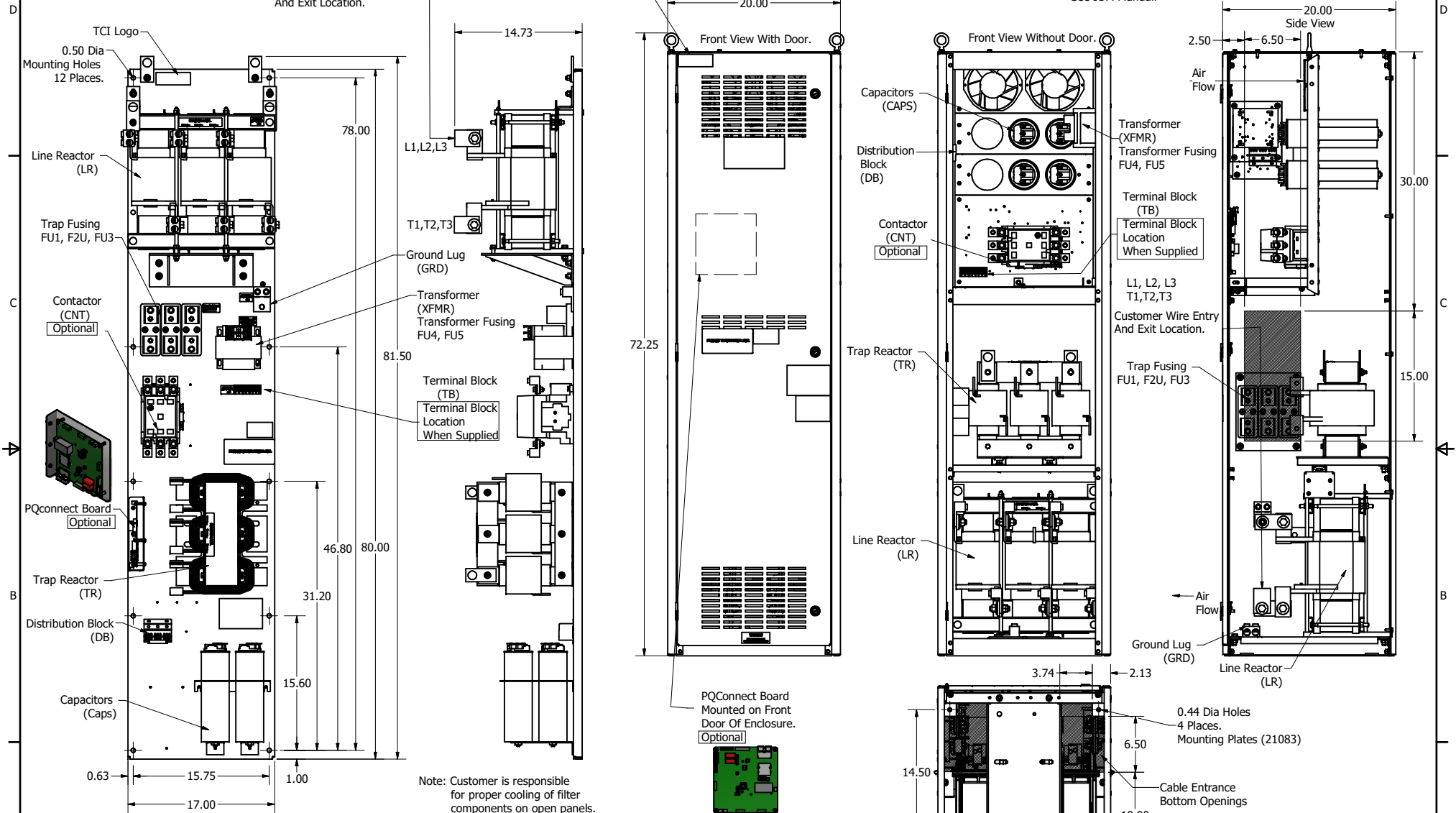
Unit Specifications					
kVar	Harmonic	Volt	HZ.	Phase	HP
60	5TH	600	60	3	400

Customer Connections.
L1, L2, L3, T1, T2, T3
Wire Range: Two, 350MCM to 6AWG.

Ground Lug
Wire Range: Two, 350MCM to 6AWG.

HGL Enclosed Type 1 Part Number	Schematic Drawing #	Approx Weight (LBS)
HGL0400CW1S0000	30807-1	645
HGL0400CW1C0000	30807	655
HGL0400CW1S1000	30807-PQ1	646
HGL0400CW1C1000	30807-PQ	656

Note: For Torque Information See IOM Manual.



HGL0400CW-----				
Components	0S0000/1S0000	0C0000/1C0000	0S1000/1S1000	0C1000/1C1000
Line Reactor (LR)	X	X	X	X
Trap Reactor (TR)	X	X	X	X
Capacitor (Cap)	X	X	X	X
Trap Fusing, FU1, FU2, FU3	X	X	X	X
Contactor (CNT)	X	X	X	X
Transformer (XFMR)	X (Type 1)	X	X	X
XFMR Fusing, FU4, FU5	X (Type 1)	X	X	X
PQConnect Board			X	X

TCI, LLC CLAIMS PROPRIETARY RIGHTS IN THE MATERIAL HEREIN. IT IS SUPPLIED WITHOUT PREJUDICE TO ANY PATENT RIGHTS OF TCI AND MAY NOT BE REPRODUCED OR USED TO MANUFACTURE ANYTHING SHOWN THEREIN WITHOUT WRITTEN PERMISSION FROM TCI.

TOLERANCES (EXCEPT AS NOTED)			
DECIMAL	FRACTIONAL	ANGULAR	SCALE
.XX ± .25 .XXX ± .10	± 1/16	± 1°	1/8

Material(s) Shall be RoHS Compliant

TCI W132 N10611 Grant Drive
Germantown, WI 53022

HarmonicGuard Low Capacitance
HGL, 400HP, 600/3/60, Open and Type 1

REV: 107295DG