

HGL Open Part Number	Schematic Drawing #	Approx Weight (LBS)
HGL0400AW0S000	30586-1	530
HGL0400AW0C000	30586	550
HGL0400AW0S*000	30586-PQ1	532
HGL0400AW0C*000	30586-PQ	552

*= Communication Options

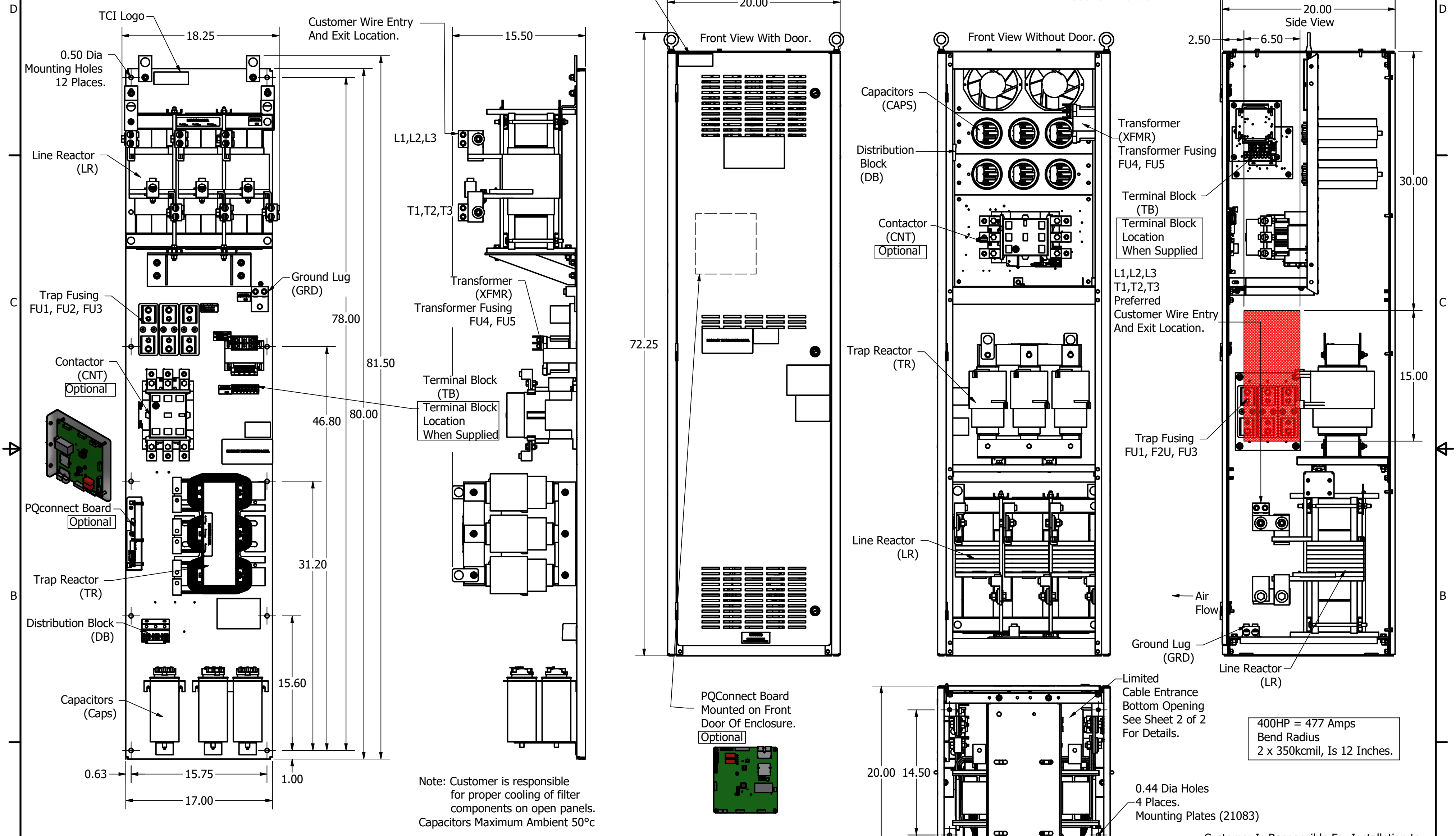
HorsePower (HP)	kVar	Harmonic	Voltage (V)	Maximum Amps (A)	Hz.	Phase
400	60	5th	480	477	60	3

Customer Connections.
L1, L2, L3, T1, T2, T3
Wire Range: Two, 350MCM to 6AWG.

Ground Lug
Wire Range: Two, 350MCM to 6AWG.

HGL Enclosed Type 1 Part Number	Schematic Drawing #	Approx Weight (LBS)
HGL0400AW1S000#	30586-1	794
HGL0400AW1C000#	30586	800
HGL0400AW1S*00#	30586-PQ1	797
HGL0400AW1C*00#	30586-PQ	803

Note: For Torque Information See IOM Manual.



Note: Customer is responsible for proper cooling of filter components on open panels. Capacitors Maximum Ambient 50°C

HGL0400AW-----				
Components	0S0000/1S0000	0C0000/1C0000	0S*000/1S*000	0C*000/1C*000
Line Reactor (LR)	X	X	X	X
Trap Reactor (TR)	X	X	X	X
Capacitor (Cap)	X	X	X	X
Trap Fusing, FU1, FU2, FU3	X	X	X	X
Contactor (CNT)		X		X
Transformer (XFMR)	X (Type 1)	X	X	X
XFMR Fusing, FU4, FU5	X (Type 1)	X	X	X
PQConnect Board			X	X

THE INFORMATION AND DESIGNS CONTAINED IN THIS DRAWING ARE CONFIDENTIAL AND THE PROPRIETARY PROPERTY OF ALLIED MOTION TECHNOLOGIES INC. AND ITS SUBSIDIARIES. NEITHER THIS DESIGN NOR ANY INFORMATION CONTAINED IN THIS DRAWING MAY BE REPRODUCED OR DISCLOSED TO OTHERS WITHOUT THE EXPRESS WRITTEN CONSENT OF ALLIED MOTION TECHNOLOGIES INC. AND ITS SUBSIDIARIES.

NO	REVISION	DATE	BY
E	6024 Add PQ Options	8/26/22	JTL
D	5471, Drawing Updates, Wire Entry Details	1/26/2021	DSW
C	5191-1, KTR Updated	4/8/2020	DSW
B	Add PQ Connect	3/5/2019	DSW

Material(s) Shall be RoHS Compliant

TCL
An Allied Motion Company

W132N10611 Grant Drive
Gemantown, WI 53022
© 2022 TCL, LLC

HarmonicGuard Low Capacitance
HGL, 400HP, 480/3/60, Open and Type 1

DRN: DSW DATE: 4/03/2017
SCALE: 1/8 APRVD: SIZE: C

107025DG
SHT 1 OF 2