

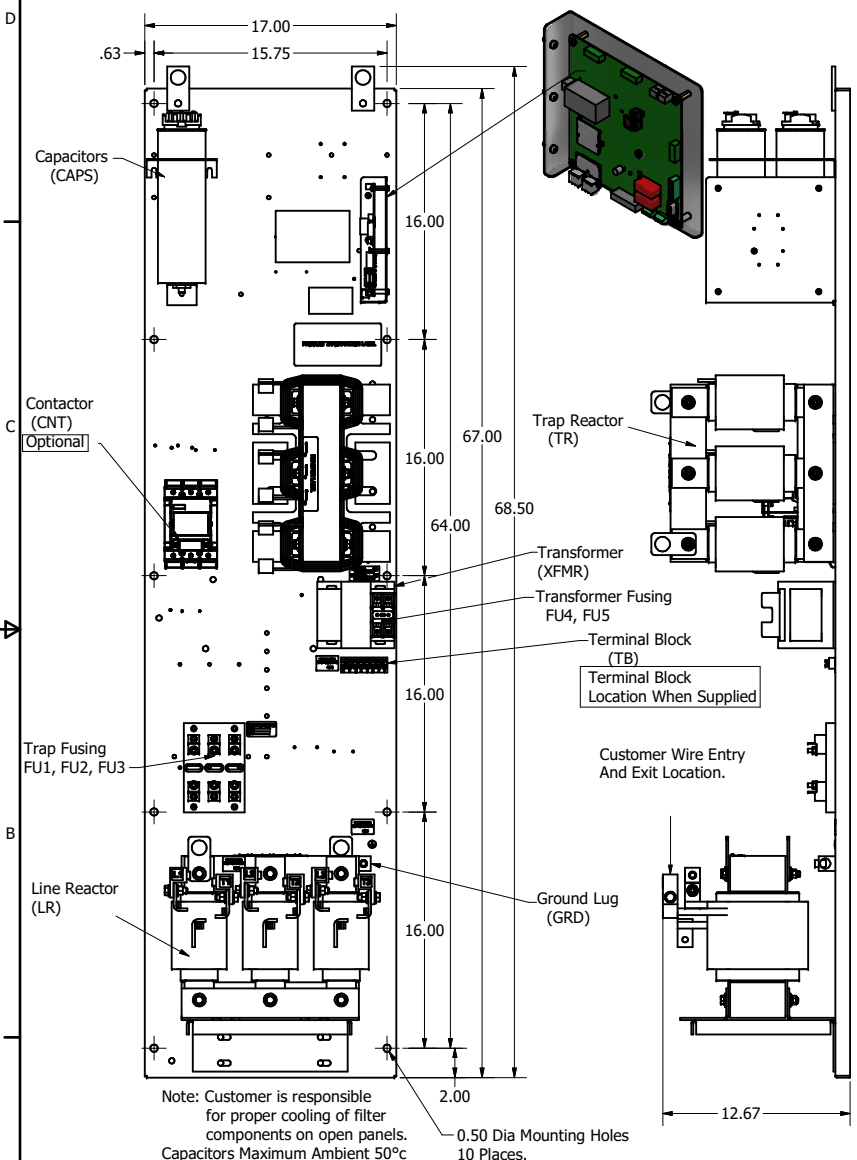
HGL Open Part Number	Schematic Drawing #	Approx Weight (LBS)
HGL0200CW0S0000	30807-1	339
HGL0200CW0C0000	30807	344
HGL0200CW0S1000	30807-PQ1	340
HGL0200CW0C1000	30807-PQ	345

Unit Specifications					
kVar	Harmonic	Volt	HZ.	Phase	HP
30	5TH	600	60	3	200

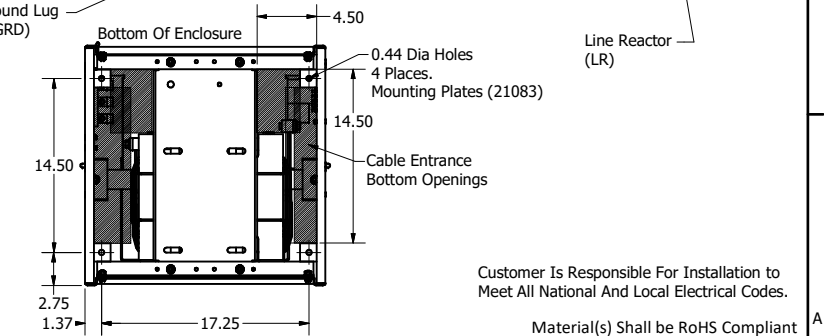
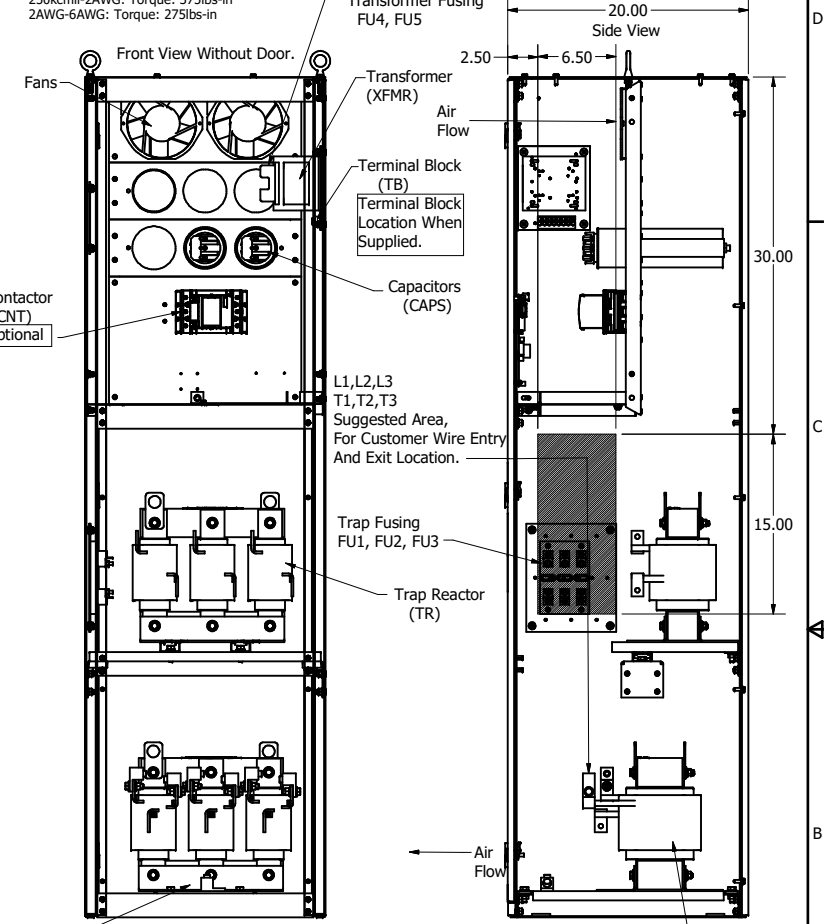
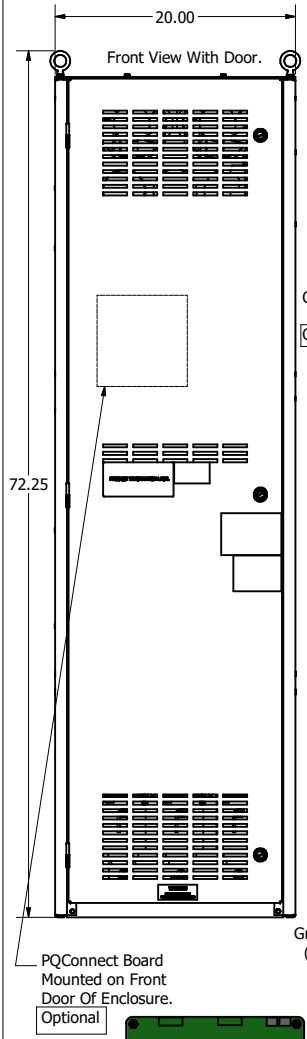
Customer Connections.
 L1, L2, L3, T1, T2, T3
 Wire Range: 250kcmil to 6AWG.
 250kcmil-2AWG: Torque: 375lbs-in
 2AWG-6AWG: Torque: 275lbs-in

Ground Lug
 Wire Range: 250kcmil to 6AWG.
 250kcmil-2AWG: Torque: 375lbs-in
 2AWG-6AWG: Torque: 275lbs-in

HGL Enclosed Type 1 Part Number	Schematic Drawing #	Approx Weight (LBS)
HGL0200CW1S0000	30807-1	490
HGL0200CW1C0000	30807	495
HGL0200CW1S1000	30807-PQ1	491
HGL0200CW1C1000	30807-PQ	496



PQConnect Board
 Optional



HGL0200CW-----				
Components	0S0000/1S0000	0C0000/1C0000	0S1000/1S1000	0C1000/1C1000
Line Reactor (LR)	X	X	X	X
Trap Reactor (TR)	X	X	X	X
Capacitor (Cap)	X	X	X	X
Trap Fusing, FU1, FU2, FU3	X	X	X	X
Contactor (CNT)	X (Type 1)	X	X	X
Transformer (XFMR)	X (Type 1)	X	X	X
XFMR Fusing, FU4, FU5	X (Type 1)	X	X	X
PQConnect Board			X	X

THE INFORMATION AND DESIGNS CONTAINED IN THIS DRAWING ARE CONFIDENTIAL AND THE PROPRIETARY PROPERTY OF ALLIED MOTION TECHNOLOGIES INC. AND ITS SUBSIDIARIES. NEITHER THIS DESIGN NOR ANY INFORMATION CONTAINED IN THIS DRAWING MAY BE REPRODUCED OR DISCLOSED TO OTHERS WITHOUT THE EXPRESS WRITTEN CONSENT OF ALLIED MOTION TECHNOLOGIES INC. AND ITS SUBSIDIARIES.

NO	REVISION	DATE	BY
C	6274, Update PT Terminals	5/16/2023	DSW
B	Add PQ Connect	4/3/19	DSW
NO			

TOLERANCES (EXCEPT AS NOTED)		SCALE	
DECIMAL	FRACTIONAL	SCALE	DATE
.XX ± .03 .XXX ± .010	± 1/32 ANGULAR	1/6	10/5/17

Customer Is Responsible For Installation to Meet All National And Local Electrical Codes.

Material(s) Shall be RoHS Compliant

TCL W132N10611 (Rev 13) 5/16/2023
 An Allied Motion Company © 2023 TCL, LLC
 Harmonic-Guard Low Capacitance
 HGL, 200HP, 600/3/60, Open and Type 1
 107291DG