

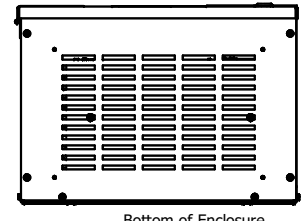
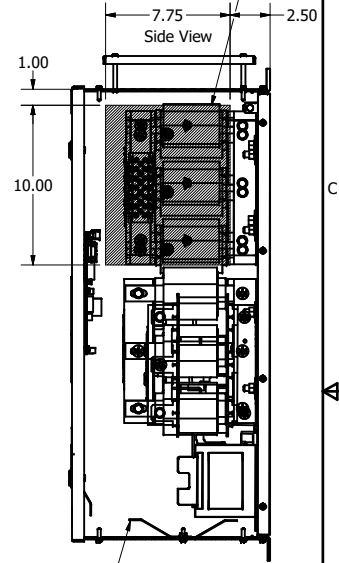
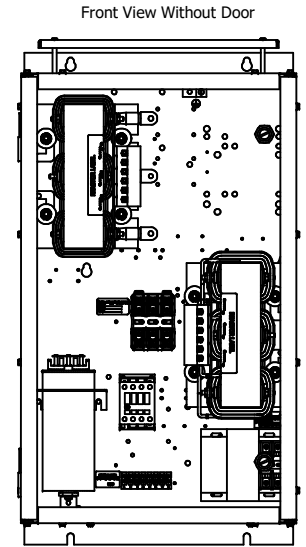
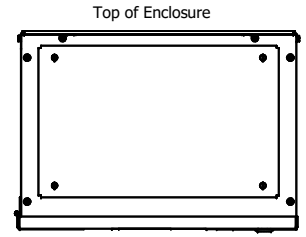
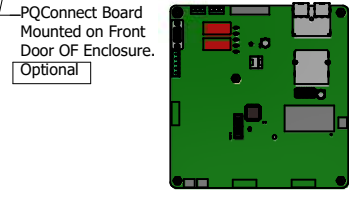
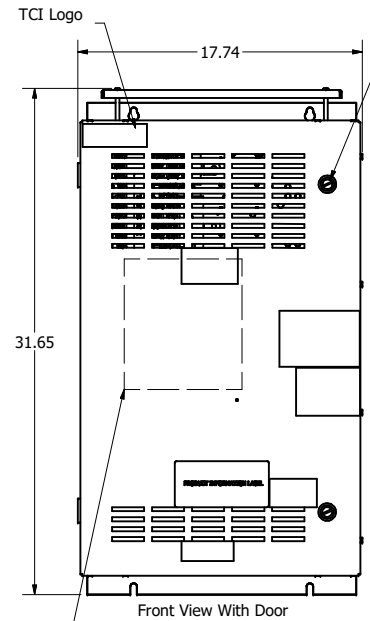
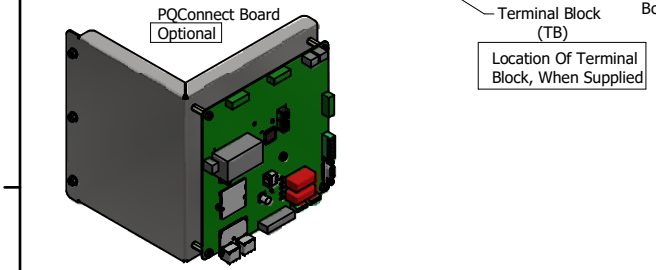
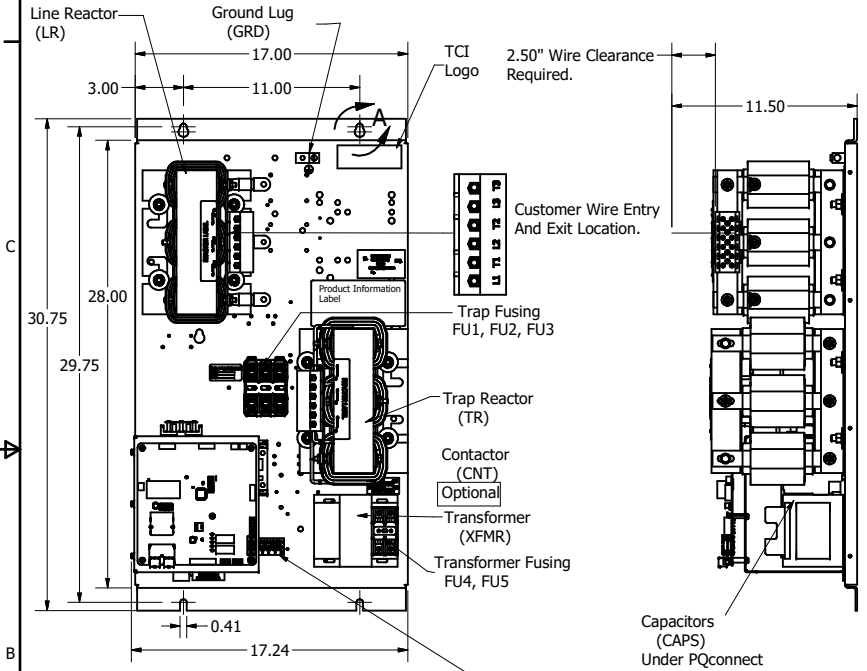
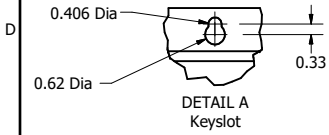
HGL Open Part Number	Schematic Drawing #	Approx Weight (LBS)
HGL0060CW0S0000	30807-1	121
HGL0060CW0C0000	30807	126
HGL0060CW0S1000	30807-PQ1	122
HGL0060CW0C1000	30807-PQ	127

Unit Specifications					
kVar	Harmonic	Volt	HZ.	Phase	HP
10	5TH	600	60	3	60

HGL Enclosed Type1 Part Number	Schematic Drawing #	Approx Weight (LBS)
HGL0060CW1S0000	30807-1	200
HGL0060CW1C0000	30807	205
HGL0060CW1S1000	30807-PQ1	201
HGL0060CW1C1000	30807-PQ	207

Note: For Torque Information See IOM Manual
Customer Connections.
L1, T1, L2, T2, L3, T3
Wire Range: 1 AWG to 22 AWG.

Ground Lug
Wire Range: 1/0 to 14 AWG.



Note: Customer is responsible for proper cooling of filter components on open panels. Capacitors Maximum Ambient 50°C.

Components	HGL0060CW-----			
	0S0000/1S0000	0C0000/1C0000	0S1000/1S1000	0C1000/1C1000
Line Reactor (LR)	X	X	X	X
Trap Reactor (TR)	X	X	X	X
Capacitor (Cap)	X	X	X	X
Trap Fusing, FU1, FU2, FU3	X	X	X	X
Contactor (CNT)		X		X
Transformer (XFMR)		X	X	X
XFMR Fusing, FU4, FU5		X	X	X
PQConnect Board			X	X

Customer Is Responsible For Installation to Meet All National And Local Electrical Codes.

Material(s) Shall be RoHS Compliant

TCI, LLC CLAIMS PROPRIETARY RIGHTS IN THE MATERIAL HEREIN DISCLOSED. IT IS SUPPLIED WITHOUT PREJUDICE TO ANY PATENT RIGHTS OF TCI AND MAY NOT BE REPRODUCED OR USED TO MANUFACTURE ANYTHING SHOWN THEREIN WITHOUT WRITTEN PERMISSION FROM TCI.	NO	REVISION	DATE	BY	TOLERANCES (EXCEPT AS NOTED)	<p>W132 N10611 Grant Drive Germantown, WI 53022</p> <p>HarmonicGuard Low Capacitance HGL, 60HP, 600/3/60, Open and Type 1.</p> <p>DATE: 10/5/17 SCALE: 1/8</p>
	B	PQConnect Board Added.	3/28/19	DSW	DECIMAL .XX ± .25 .XXX ± .10	
					FRACTIONAL ± 1/16	
					ANGULAR ± 1°	

A

A

4

3

2

1

SHT 1 OF 1