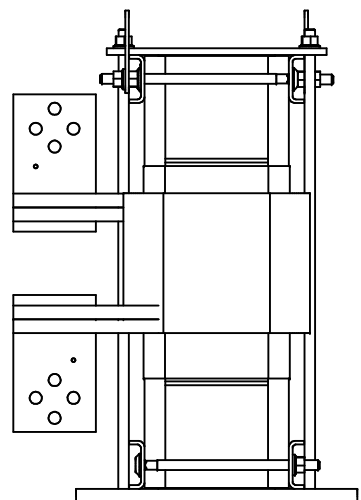
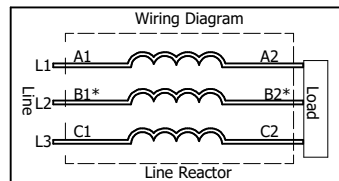


(Customer Connections)
Markings On Coil
For Reference Only.

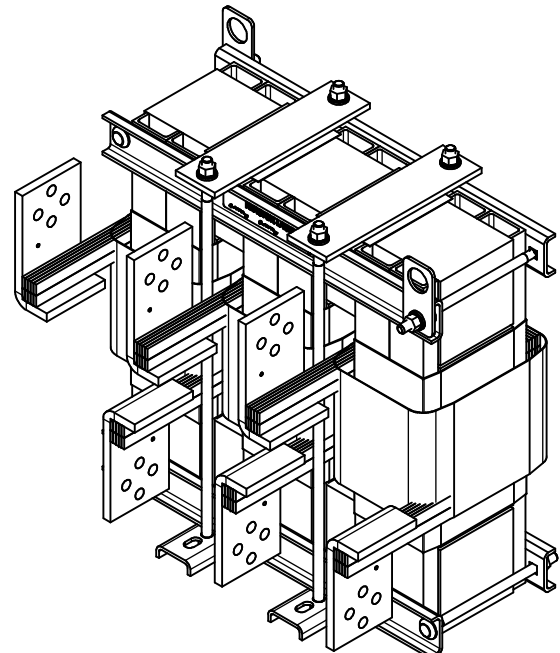


Side View



* For single phase applications, use coils A and C, Isolate terminals B1 and B2.

480 Rated Voltage, 600 Max Voltage, High Z, Impedance.							
Part Number	Horsepower (HP)	Motor Amps (A)	Maximum Amps (A)	Inductance (uH)	Weight (LBS)	Available Lug Kit	Terminal Hole Size (Inches)
KDRX4H	1000	1200	1200	26	285	SLK24	0.44



(800) 824-8282 transcoil.com

TCI, LLC
Germerystown, WI, USA
transcoil.com
800-824-8282

KDRUL Drive Reactor
KDR- Motor Amps ---
3PH, 60/60Hz, ---V Rated, 600V Max, -A Max
40C Arms Max, 155C Pole, 10x10
Manual #30895 LUG KIT #SLK-

DATE CODE

- Notes:
1. KDR Lug Kits sold separately. Contact TCI.
 2. For KDRUL Version With Terminal Lugs Attached, See Sheet 4
 3. UL file number: cULus Listed File E116124.
 4. KDR Drive Reactors Comply With The Thermal and Altitude Standards Set Forth by NEMA ST20-1992.
 5. KDR IOM Manual Part Number 30895
 6. NEC Current For 208/240 Volts, Horsepower Based On 208 Volts.
 7. Material(s) Shall be RoHS Compliant
 8. Customer Is Responsible For Installation To Meet All National And Local Electrical Codes.

THE INFORMATION AND DESIGNS CONTAINED IN THIS DRAWING ARE CONFIDENTIAL AND THE PROPRIETARY PROPERTY OF ALLIED MOTION TECHNOLOGIES INC. AND ITS SUBSIDIARIES. NEITHER THIS DESIGN NOR ANY INFORMATION CONTAINED IN THIS DRAWING MAY BE REPRODUCED OR DISCLOSED TO OTHERS WITHOUT THE EXPRESS WRITTEN CONSENT OF ALLIED MOTION TECHNOLOGIES INC. AND ITS SUBSIDIARIES.

C	6252, KDRX4H, Terminal Updated	4/26/2023	DSW
NO	REVISION	DATE	BY

TOLERANCES (EXCEPT AS NOTED)
DECIMAL
.XX ± .25
.XXX ± .10
FRACTIONAL
± 1/16
ANGULAR
± 1°

TCI W132N10611 (Rev'd 11/16)
Germerystown, WI 53022
© 2023 TCI, LLC
An Official Motion Systems Company
KDR X Frame, Copper Bus
Reactor Drawing
DWN BY: DSW DATE: 3/5/2018 107539-7DG
SCALE: 1:3.2 DRW: C/S

SHT 7 OF 8