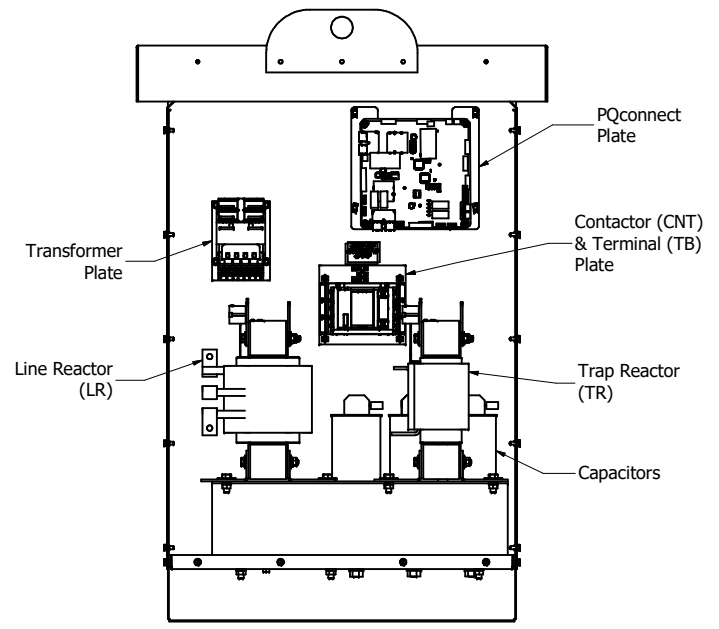
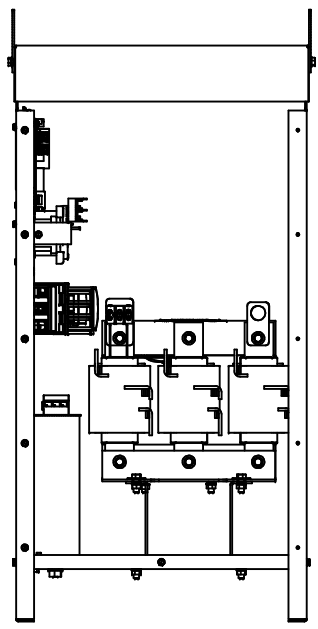
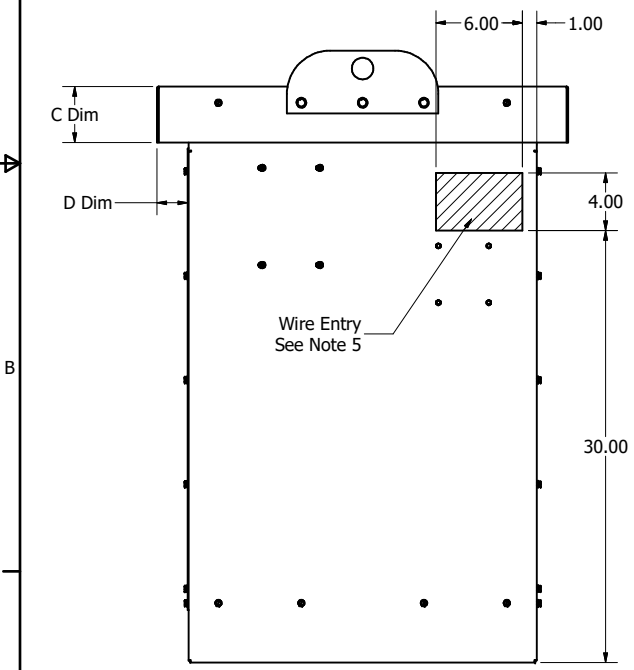
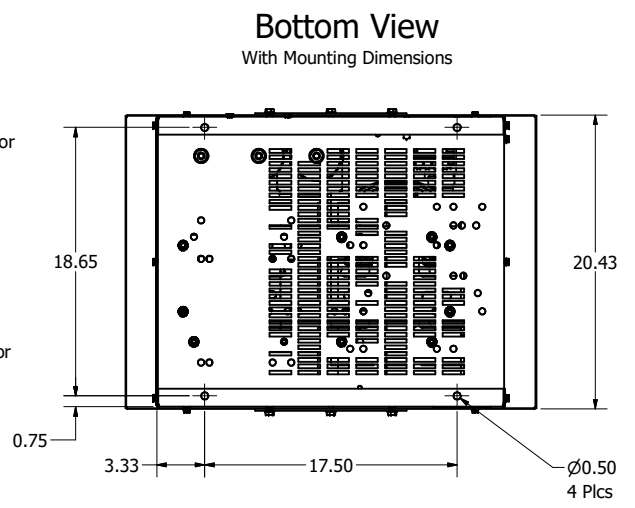
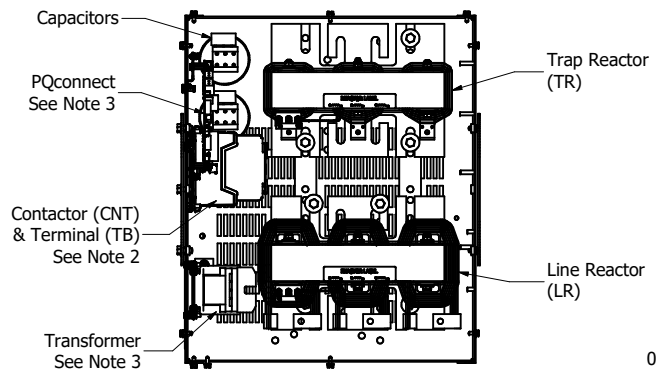
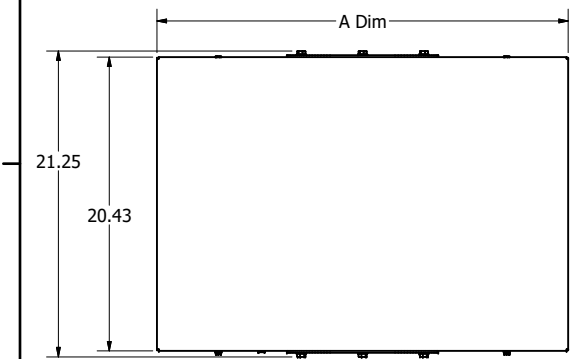


HP	Volts	Phase	Hz	Harmonic	Contactors	PQconnect	Weight (lb)	Terminal Hole Size
125	480 & 600	3	60	5TH	Without	Without	300	0.38 In
125	480 & 600	3	60	5TH	With	Without	305	0.38 In
125	480 & 600	3	60	5TH	With	With	315	0.38 In
150	480 & 600	3	60	5TH	Without	Without	346	0.44 In
150	480 & 600	3	60	5TH	With	Without	350	0.44 In
150	480 & 600	3	60	5TH	With	With	360	0.44 In

Dimension Table				
Enclosure	"A" Dim	"B" Dim	"C" Dim	"D" Dim
Type 1	26.5	40.4	2.0	1.1
Type 3R	28.5	40.0	3.9	2.1




Front View  
With Front Cover Removed

Right Inside View

- Notes:
- 1.) Refer to manual for wire size and torque.
  - 2.) Contactor (CNT) and terminal (TB) are optional.
  - 3.) PQconnect with Transformer are optional.
  - 4.) Refer to schematic # 30047, PQ Schematic (TBD)
  - 5.) Preferred wire entry area.
  - 6.) Wire entry is allowed through the bottom.
  - 7.) Enclosure is shown with a Type 3R top.
  - 8.) Use only hubs or fittings that comply with UL514B for Type 3R applications
  - 9.) Installation must meet all national and local codes.
  - 10.) Number, size & location can vary per Hp and voltage.

Material(s) Shall be RoHS Compliant

THE INFORMATION AND DESIGNS CONTAINED IN THIS DRAWING ARE CONFIDENTIAL AND THE PROPRIETARY PROPERTY OF ALLIED MOTION TECHNOLOGIES INC. AND ITS SUBSIDIARIES. NEITHER THIS DESIGN NOR ANY INFORMATION CONTAINED IN THIS DRAWING MAY BE REPRODUCED OR DISCLOSED TO OTHERS WITHOUT THE EXPRESS WRITTEN CONSENT OF ALLIED MOTION TECHNOLOGIES INC. AND ITS SUBSIDIARIES.				TOLERANCES (EXCEPT AS NOTED) DECIMAL .XX ± .25 .XXX ± .10 FRACTIONAL ± 1/16 ANGULAR ± 1°				 W132N10611 (Rev 11/16) Germantown, WI 53022 © 2021 TCI, LLC HarmonicShield 125Hp, 150Hp, 480 & 600 Volt 106289DG	
D	Added HSL kVAR values	2/21/23	JSG						
C	Add PQconnect	7/27/2021	DSW						
B	Add Type 1 & 600 Volt	5/26/17	RHW						
A	As Designed	6/23/16	DSW						
NO	REVISION	DATE	BY						