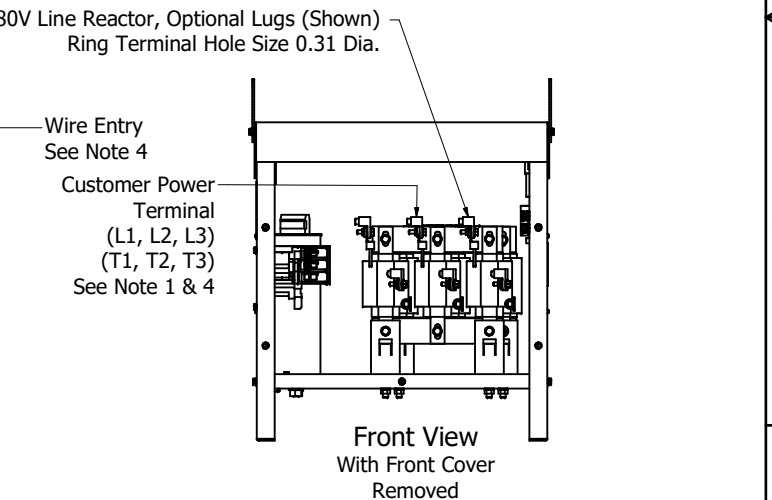
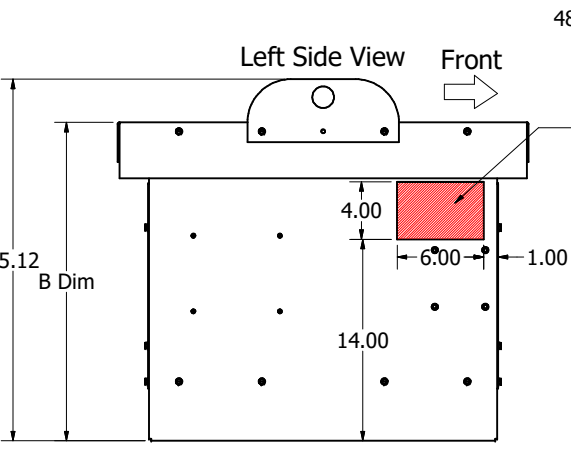
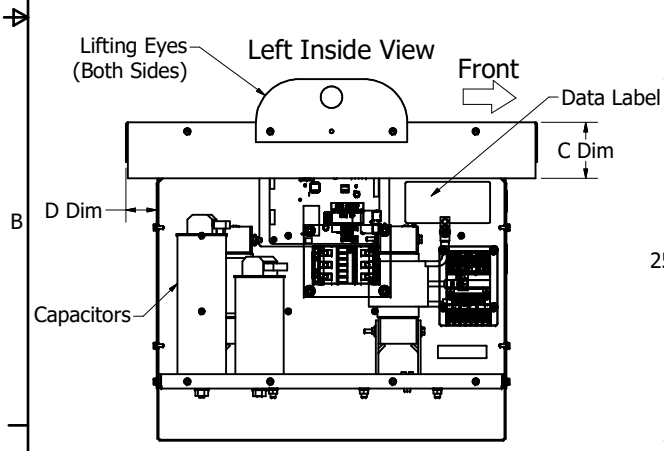
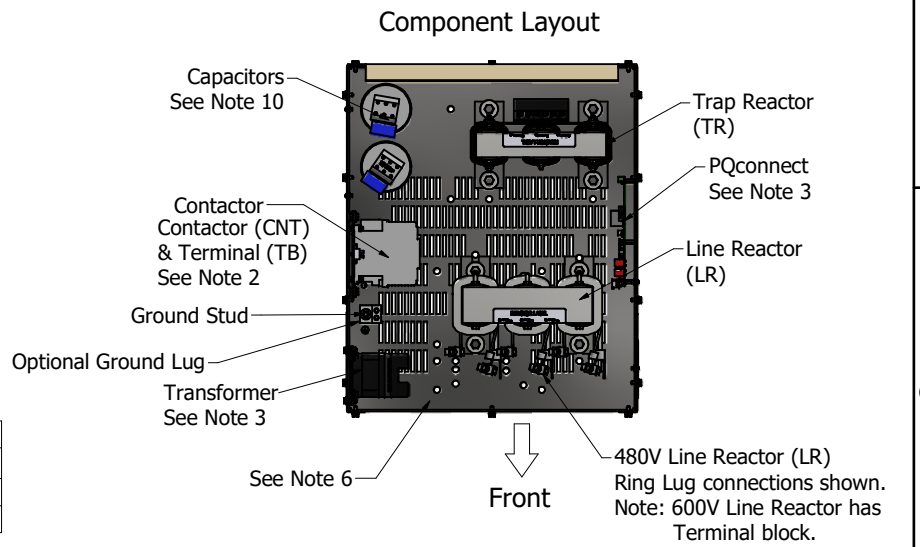


Enclosure	"A" Dim	"B" Dim	"C" Dim	"D" Dim
Type 1	26.5	23.0	2.0	1.2
Type 3R	28.5	22.1	3.9	2.1

HP	Volts	Phase	H _z	Harmonic	Kvar	Contactor	PQconnect	Weight (lb)
75	480 & 600	3	60	5TH	25	Without	Without	186
75	480 & 600	3	60	5TH	25	With	Without	189
75	480 & 600	3	60	5TH	25	With	With	198



- Notes:
- 1.) Refer to manual for wire size and torque.
 - 2.) Contactor (CNT) and terminal (TB) are optional.
 - 3.) PQconnect with Transformer are optional.
 - 4.) Refer to schematic # 30047, PQ Schematic (TBD)
 - 5.) Preferred wire entry area.
 - 6.) Wire entry is allowed through the bottom.
 - 7.) Enclosure is shown with a Type 3R top.
 - 8.) Use only hubs or fittings that comply with UL514B for Type 3R applications
 - 9.) Installation must meet all national and local codes.
 - 10.) Number, size & location can vary per Hp and voltage.

Material(s) Shall be RoHS Compliant

THE INFORMATION AND DESIGNS CONTAINED IN THIS DRAWING ARE CONFIDENTIAL AND THE PROPRIETARY PROPERTY OF ALLIED MOTION TECHNOLOGIES INC. AND ITS SUBSIDIARIES. NEITHER THIS DESIGN NOR ANY INFORMATION CONTAINED IN THIS DRAWING MAY BE REPRODUCED OR DISCLOSED TO OTHERS WITHOUT THE EXPRESS WRITTEN CONSENT OF ALLIED MOTION TECHNOLOGIES INC. AND ITS SUBSIDIARIES.				TOLERANCES (EXCEPT AS NOTED) DECIMAL .XX ± .25 .XXX ± .10		W132N10611 Grant Drive Germantown, WI 53022 © 2021 TCI, LLC	
D	Add PQconnect	7/27/2021	DSW	FRACTIONAL ± 1/16		HarmonicShield 75Hp, 480 & 600 Volt	
C	(LR) Ring Lug terminal blk note added	5/29/19	MJS	± 1°		DSN BY: DSW DATE: 6/20/16 FILE: 106282DG SCALE: 1:5 DRAWN: CSE SHEET 1 OF 1	
B	Add Type 1 & 600 Volt	5/25/17	RHW				
A	As Designed	6/20/16	DSW				
NO	REVISION	DATE	BY				