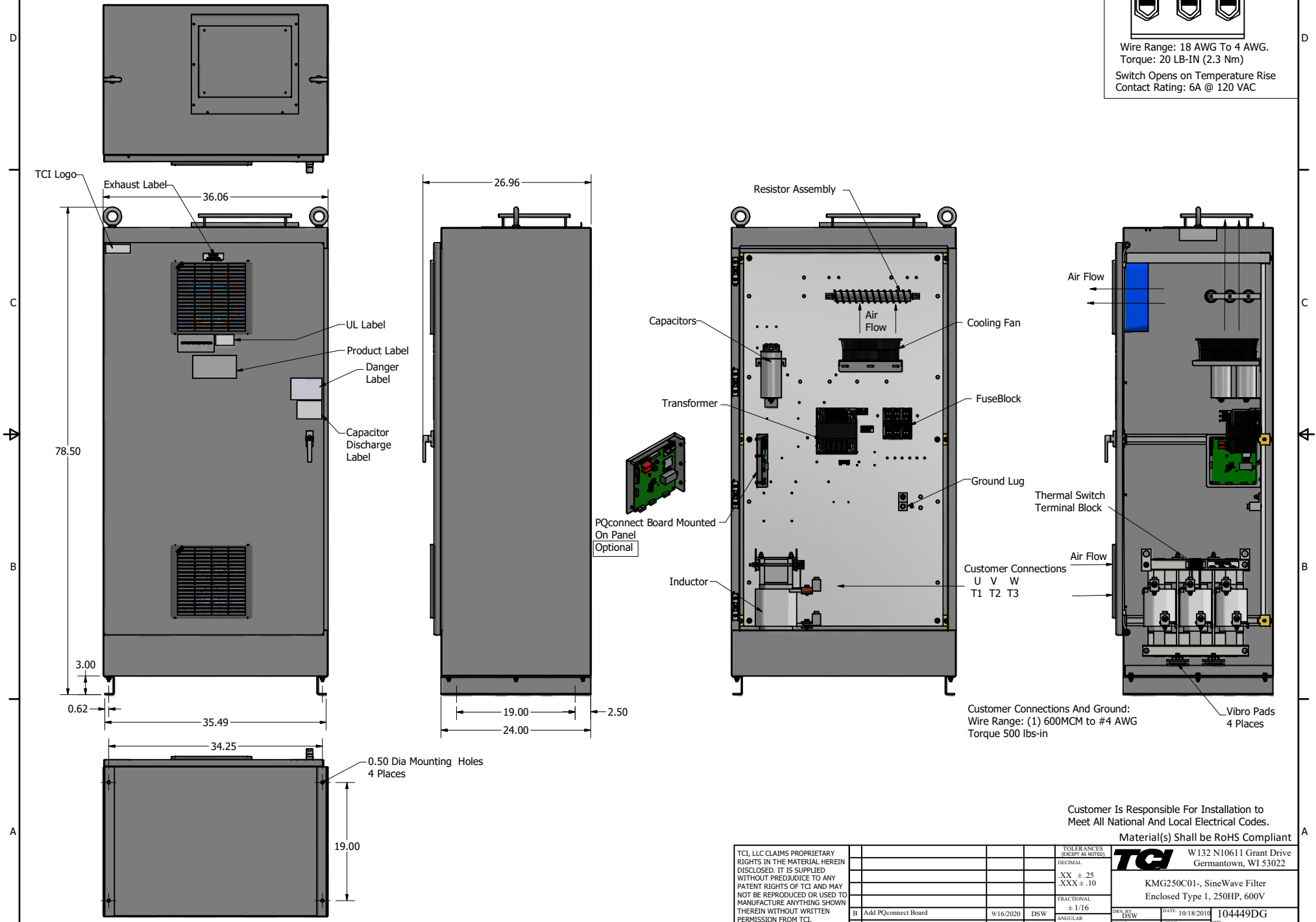
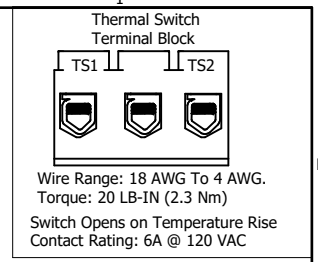


SineWave Part Number	Schematic Drawing#	Approx Weight (LBS)
KMG250C01A	24281-23A	773
KMG250C01P	24281-23P	778

HorsePower (HP)	kVar	Max Amps	Voltage (V)	HZ	Phase
250	20	250	600	60	3



Customer Is Responsible For Installation to Meet All National And Local Electrical Codes.

Material(s) Shall be RoHS Compliant

TCI, LLC CLAIMS PROPRIETARY RIGHTS IN THE MATERIAL HEREIN DISCLOSED. IT IS SUPPLIED WITHOUT PREJUDICE TO ANY PATENT RIGHTS OF TCI AND MAY NOT BE REPRODUCED OR USED TO MANUFACTURE ANYTHING SHOWN THEREIN WITHOUT WRITTEN PERMISSION FROM TCI.				TOLERANCES (EXCEPT AS NOTED)	W132 N10611 Grant Drive Germantown, WI 53022 KMG250C01- SineWave Filter Enclosed Type 1, 250HP, 600V 104449DG
				DECIMAL	
				.XX ±.25 .XXX ±.10	
				FRACTIONAL	
B Add PQconnect Board	9/16/2020	DSW		± 1/16	DESIGNED BY: DSW DATE: 10/18/2010 SCALE: 1/5.5 DRAWN BY: [] CHECKED BY: []
NO REVISION	DATE	BY		± 1°	SHEET 1 OF 1