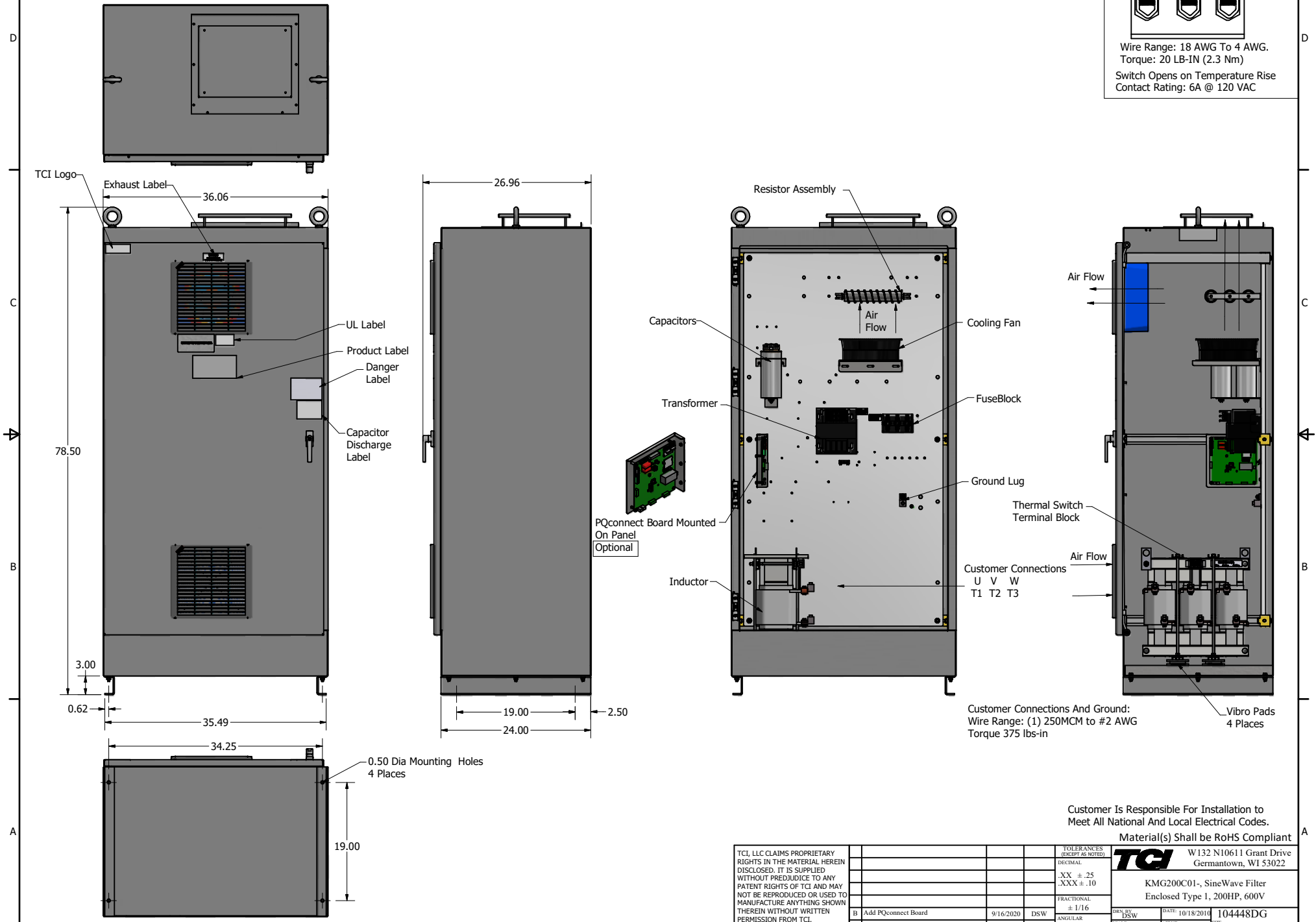
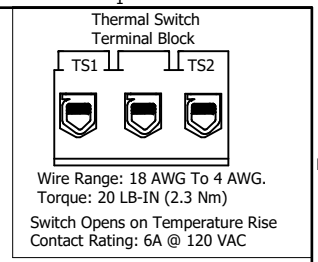


SineWave Part Number	Schematic Drawing#	Approx Weight (LBS)
KMG200C01A	24281-23A	768
KMG200C01P	24281-23P	773

HorsePower (HP)	kVar	Max Amps	Voltage (V)	HZ	Phase
200	20	200	600	60	3



Customer Is Responsible For Installation to Meet All National And Local Electrical Codes.
Material(s) Shall be RoHS Compliant

TCI, LLC CLAIMS PROPRIETARY RIGHTS IN THE MATERIAL HEREIN DISCLOSED. IT IS SUPPLIED WITHOUT PREJUDICE TO ANY PATENT RIGHTS OF TCI AND MAY NOT BE REPRODUCED OR USED TO MANUFACTURE ANYTHING SHOWN THEREIN WITHOUT WRITTEN PERMISSION FROM TCI.					TOLERANCES (EXCEPT AS NOTED)	TCI W132 N10611 Grant Drive Germantown, WI 53022 KMG200C01- SineWave Filter Enclosed Type 1, 200HP, 600V DESIGNED BY: DSW DATE: 10/18/2016 104448DG SCALE: 1/5.5 DRAWN: []
					DECIMAL	
					.XX ±.25 .XXX ±.10	
					FRACTIONAL	
	B Add PQconnect Board	9/16/2020	DSW		ANGULAR ± 1/16	
	NO REVISION	DATE	BY		± 1°	