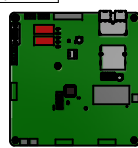
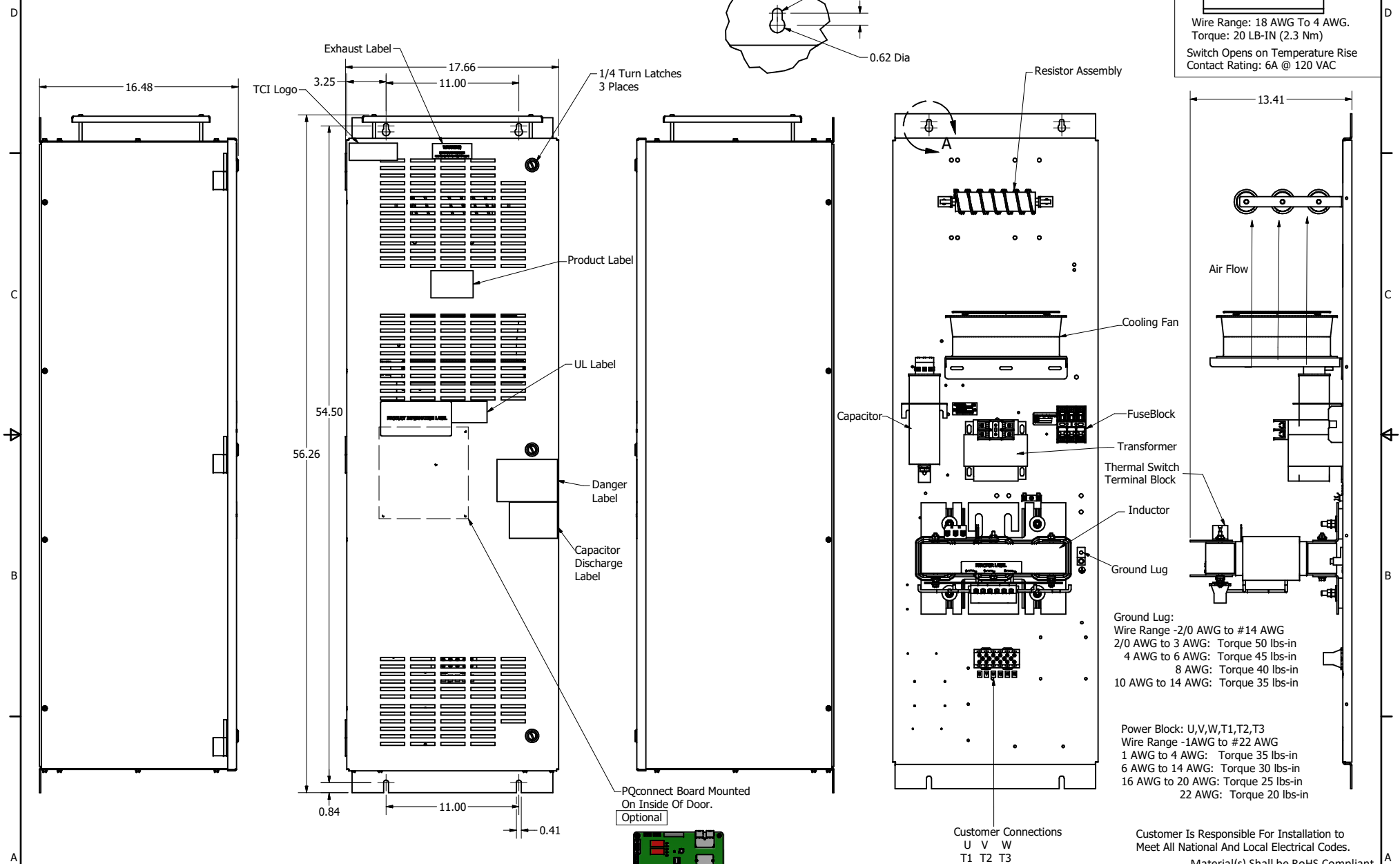
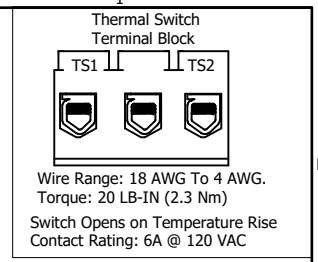


SineWave Part Number	Schematic Drawing#	Approx Weight (LBS)
KMG55C01A	24281-23A	258
KMG55C01P	24281-23P	259

HorsePower (HP)	kVar	Max Amps	Voltage (V)	HZ	Phase
50	5	55	600	60	3



TCI, LLC CLAIMS PROPRIETARY RIGHTS IN THE MATERIAL HEREIN DISCLOSED. IT IS SUPPLIED WITHOUT PREJUDICE TO ANY PATENT RIGHTS OF TCI AND MAY NOT BE REPRODUCED OR USED TO MANUFACTURE ANYTHING SHOWN THEREIN WITHOUT WRITTEN PERMISSION FROM TCI.

TOLERANCES (EXCEPT AS NOTED)			
			DECIMAL
			.XX ± .25
			.XXX ± .10
			FRACTIONAL
			± 1/16
C	Add PQconnect Board	9/21/2020	DSW
NO	REVISION	DATE	BY
			± 1°

W132 N10611 Grant Drive  
Germantown, WI 53022

**TCI**

KMG55C01-, SineWave Filter  
Enclosed Type 1, 50HP, 600V

DATE: 10/14/2014  
DWG NO: 104442DG

SCALE: 1/5.5  
SHEET: 1 OF 1