

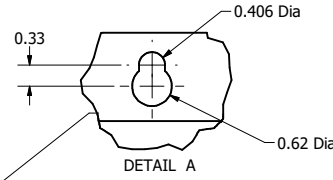
SineWave Part Number	Schematic Drawing#	Approx Weight (LBS)
KMG28C01A	24281-11A	143
KMG28C01P	24281-11P	144

HorsePower (HP)	kVar	Max Amps	Voltage (V)	HZ	Phase
25	2.71	28	600	60	3

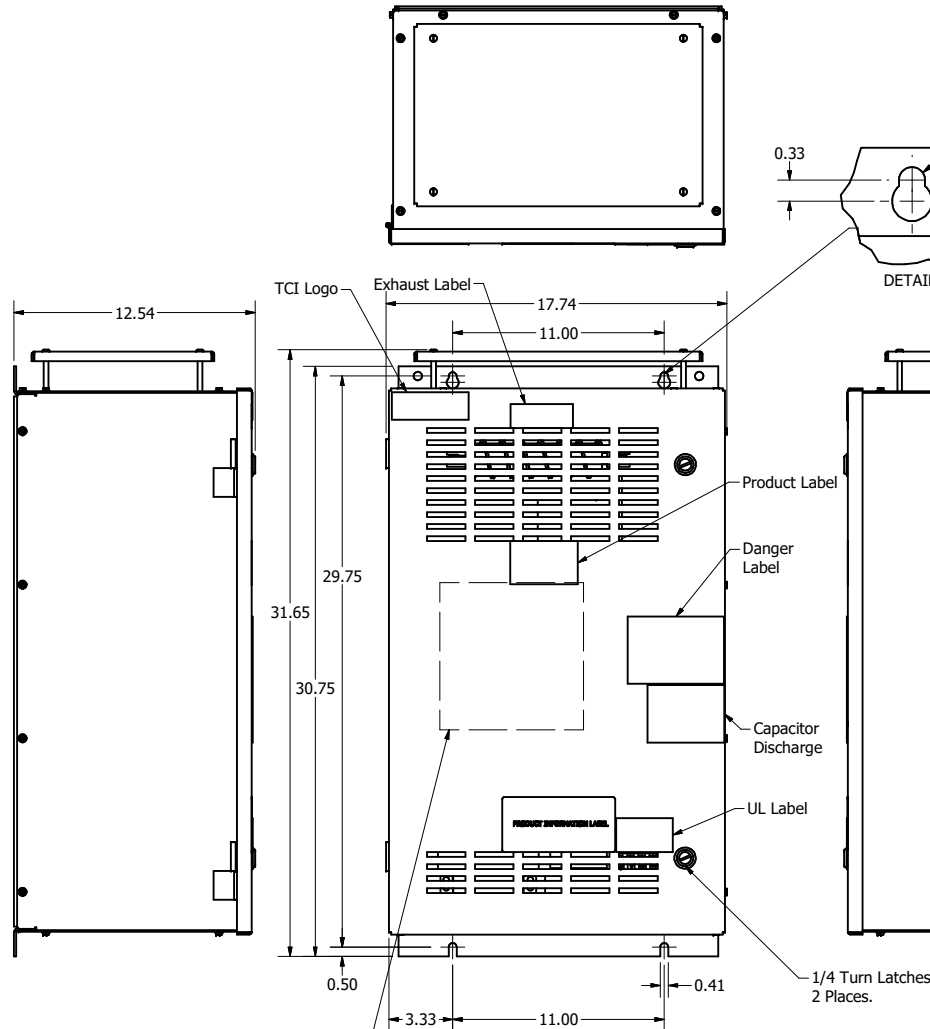
1

Thermal Switch Terminal Block

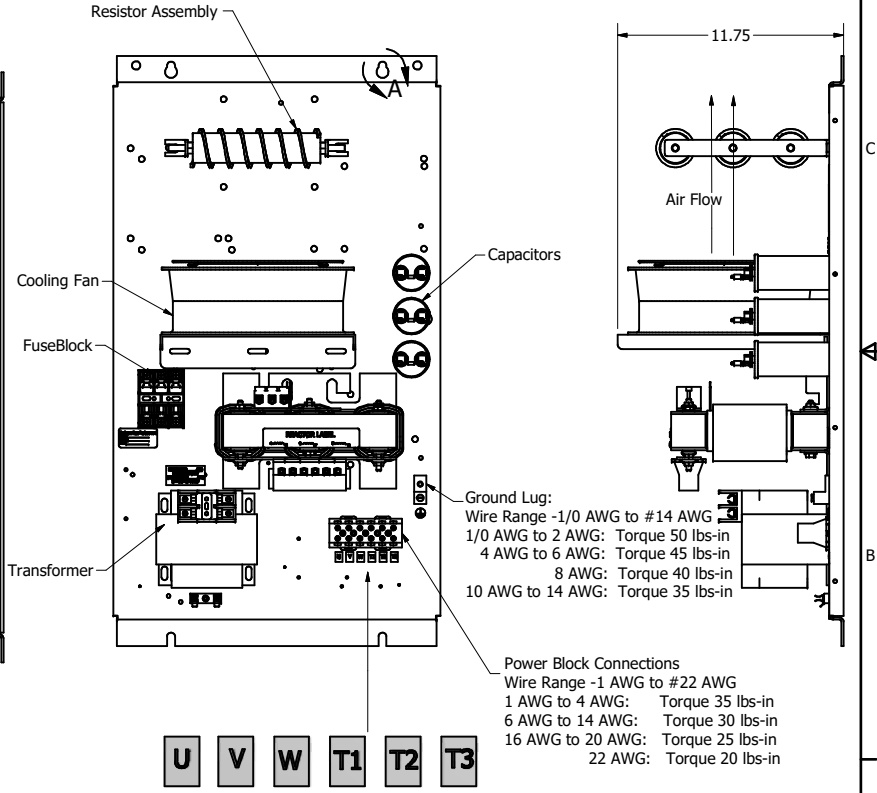
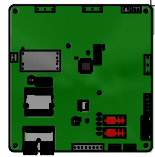
Wire Range: 18 AWG To 4 AWG.
Torque: 20 LB-IN (2.3 Nm)
Switch Opens on Temperature Rise
Contact Rating: 6A @ 120 VAC



D
C
B
A



PQconnect Board Mounted
On Inside Front Door.
OPTIONAL



Customer Is Responsible For Installation to Meet All National And Local Electrical Codes.

Material(s) Shall be RoHS Compliant

TCI, LLC CLAIMS PROPRIETARY RIGHTS IN THE MATERIAL HEREIN DISCLOSED. IT IS SUPPLIED WITHOUT PREJUDICE TO ANY PATENT RIGHTS OF TCI AND MAY NOT BE REPRODUCED OR USED TO MANUFACTURE ANYTHING SHOWN THEREIN WITHOUT WRITTEN PERMISSION FROM TCI.					TOLERANCES (EXCEPT AS NOTED) DECIMAL .XX ± .25 .XXX ± .10 FRACTIONAL ± 1/16 ANGULAR ± 1°	TCI W132 N10611 Grant Drive Germantown, WI 53022 KMG28C01-, SineWave Filter Enclosed Type 1, 25HP, 600V 104439DG SCALE: 1/8 SHEET 1 OF 1
	B	Add PQconnect Board	9/22/2020	DSW	DESIGNED BY: DSW DATE: 10/14/2014 DRAWN BY: [blank] DATE: [blank]	
	NO	REVISION	DATE	BY		