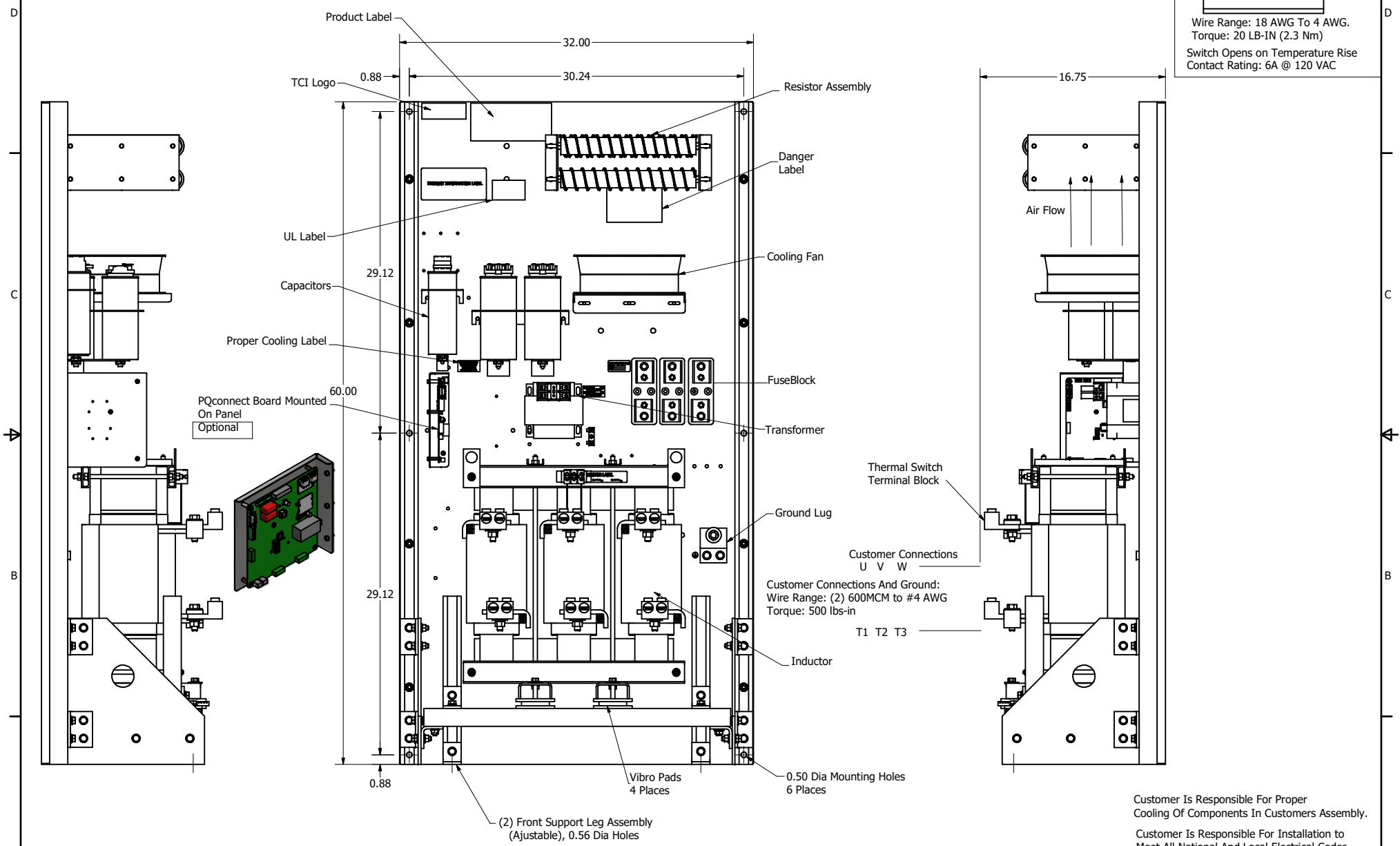
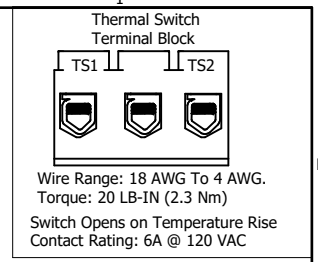


SineWave Part Number	Schematic Drawing#	Approx Weight (LBS)
KMG500C00A	24281-23A	645
KMG500C00P	24281-23P	650

HorsePower (HP)	kVar	Max Amps	Voltage (V)	HZ	Phase
500	45	500	600	60	3



Customer Is Responsible For Proper Cooling Of Components In Customers Assembly.

Customer Is Responsible For Installation to Meet All National And Local Electrical Codes.

Material(s) Shall be RoHS Compliant

TCI, LLC CLAIMS PROPRIETARY RIGHTS IN THE MATERIAL HEREIN DISCLOSED. IT IS SUPPLIED WITHOUT PREJUDICE TO ANY PATENT RIGHTS OF TCI AND MAY NOT BE REPRODUCED OR USED TO MANUFACTURE ANYTHING SHOWN THEREIN WITHOUT WRITTEN PERMISSION FROM TCI.					TOLERANCES (EXCEPT AS NOTED) DECIMAL .XX ± .25 .XXX ± .10 FRACTIONAL ± 1/16 ANGULAR ± 1°	TCI W132 N10611 Grant Drive Germantown, WI 53022 KMG500C00-, SineWave Filter Open Panel, 500HP, 600V DESIGNED BY: DSW DATE: 10/12/2016 FILE: 104432DG SCALE: 1/5 DRAWN BY: CS
	B	Add PQconnect Board	9/24/2020	DSW		
	NO	REVISION	DATE	BY		